

# High-dose therapy and autologous stem cell transplantation in patients with POEMS syndrome: a retrospective study of the Plasma Cell Disorder sub-committee of the Chronic Malignancy Working Party of the European Society for Blood & Marrow Transplantation

Gordon Cook,<sup>1</sup> Simona Iacobelli,<sup>2</sup> Anja van Biezen,<sup>3</sup> Dimitris Ziaqkos,<sup>4</sup> Veronique LeBlond,<sup>5</sup> Julie Abraham,<sup>6</sup> Grant McQuaker,<sup>7</sup> Stefan Schoenland,<sup>8</sup> Alessandro Rambaldi,<sup>9</sup> Kazimierz Halaburda,<sup>10</sup> Maria Rovira,<sup>11</sup> Simona Sica,<sup>12</sup> Jenny Byrne,<sup>13</sup> Ramon Garcia Sanz,<sup>14</sup> Arnon Nagler,<sup>15</sup> Niels W.C.J. van de Donk,<sup>16</sup> Marjatta Sinisalo,<sup>17</sup> Mark Cook,<sup>18</sup> Nicolaus Kröger,<sup>19</sup> Theo De Witte,<sup>20</sup> Curly Morris<sup>21</sup> and Laurant Garderet<sup>22</sup>

<sup>1</sup>St James's Institute of Oncology, Leeds, UK; <sup>2</sup>Centro Interdipartimentale di Biostatistica e Bioinformatica, Università Tor Vergata, Rome, Italy; <sup>3</sup>EBMT Data Office Leiden, LUMC, the Netherlands; <sup>4</sup>Department of Medical Statistics and Bioinformatics, Leiden University Medical Centre, Leiden, the Netherlands; <sup>5</sup>Groupe Hospitalier Pitié-Salpêtrière, Paris, France; <sup>6</sup>CHRU Limoges, France; <sup>7</sup>Beatson, West of Scotland Cancer Centre, Glasgow, UK; <sup>8</sup>University of Heidelberg, Germany; <sup>9</sup>Azienda Ospedaliera Papa Giovanni XXIII, Bergamo, Italy; <sup>10</sup>Institute of Hematology and Transfusion Medicine, Warsaw, Poland; <sup>11</sup>Hospital Clinic, Barcelona, Spain; <sup>12</sup>Università Cattolica S. Cuore, Rome, Italy; <sup>13</sup>Nottingham University Hospitals Trust, Nottingham, UK; <sup>14</sup>Universitario de Clinico, Salamanca, Spain; <sup>15</sup>Chaim Sheba Medical Center, Tel-Hashomer, Israel; <sup>16</sup>VU University Medical Center, Amsterdam, the Netherlands; <sup>17</sup>Department of Medicine, Tampere University Hospital, Tampere, Finland; <sup>18</sup>Queen Elizabeth Hospital, Birmingham, UK; <sup>19</sup>University Hospital Hamburg, Germany; <sup>20</sup>Radboud university-Nijmegen medical centre, Nijmegen, the Netherlands; <sup>21</sup>Queens University, Belfast, Northern Ireland, UK and <sup>22</sup>Hôpital Saint Antoine, Paris, France

©2017 Ferrata Storti Foundation. This is an open-access paper. doi:10.3324/haematol.2016.148460

Received: April 26, 2016.

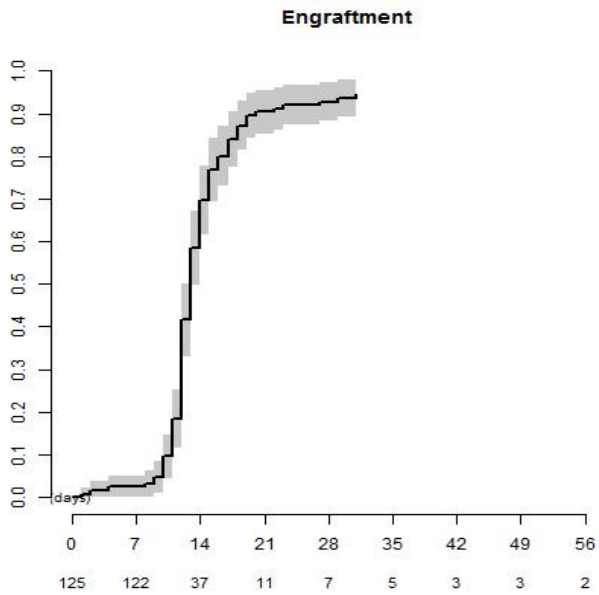
Accepted: September 13, 2016.

Pre-published: September 15, 2016.

Correspondence: g.cook@leeds.ac.uk

---

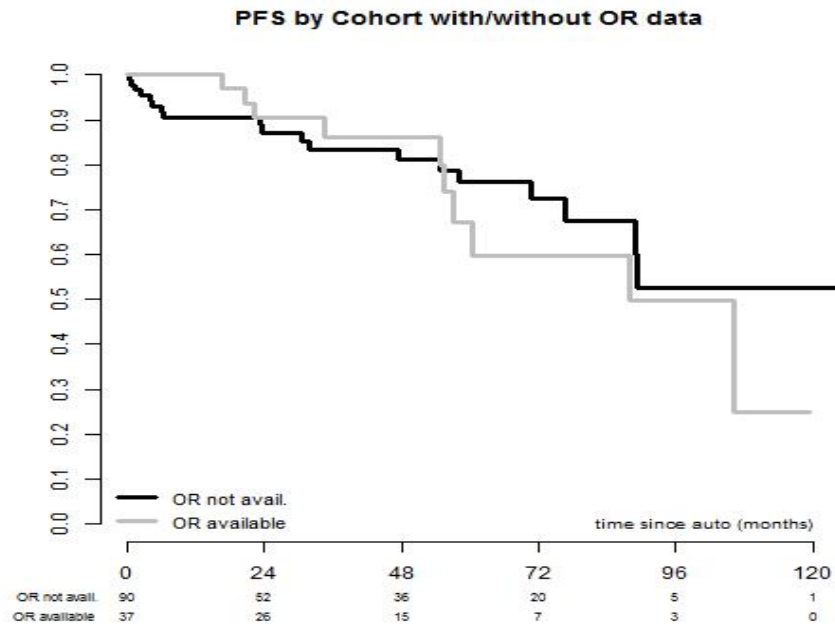
**SUPPLEMENTARY FIGURE 1.** Cumulative incidence of neutrophil engraftment.



**SUPPLEMENTARY FIGURE 2.** POEMS Syndrome organ specific response tool.

SCORE	0	1	2	3	Pre-ASCT	Post-ASCT	Time to Max Response (months)
<b><u>Neuropathy :</u></b> Pain Balance Paraesthesia Mobility	Absent Absent Absent Normal	Mild Mild Mild Limited	Moderate Moderate Moderate With Assistance	Severe Severe Severe Immobil e			
<b><u>Organomegaly :</u></b> Hepatomegaly Splenomegaly Lymphadenopathy	Absent Absent Absent	Mild Mild Mild	Moderate Moderate Moderate	Severe Severe Severe			
<b><u>Volume Overload :</u></b> Pleural effusions Ascites Pericardial effusions	Absent Absent Absent	Mild Mild Mild	Moderate Moderate Moderate	Severe Severe Severe			
<b>Total Organ Assessment Score</b>							

**SUPPLEMENTARY FIGURE 3.** PFS by cohort in who organ response information is or is not available.



**SUPPLEMENTARY FIGURE 4.** PFS by performance score at ASCT

