

Late thyroid complications in survivors of childhood acute leukemia. An L.E.A. study

Claire Oudin,^{1,2} Pascal Auquier,² Yves Bertrand,³ Philippe Chastagner,⁴ Justyna Kanold,⁵ Maryline Poirée,⁶ Sandrine Thouvenin,⁷ Stephane Ducassou,⁸ Dominique Plantaz,⁹ Marie-Dominique Tabone,¹⁰ Jean-Hugues Dalle,¹¹ Virginie Gandermer,¹² Patrick Lutz,¹³ Anne Sirvent,¹⁴ Virginie Villes,² Vincent Barlogis,^{1,2} André Baruchel,¹¹ Guy Leverger,¹⁰ Julie Berbis,² and Gérard Michel^{1,2}

¹Department of Pediatric Hematology and Oncology, Timone Enfants Hospital and Aix-Marseille University; ²Research Unit EA 3279 and Department of Public Health, Aix-Marseille University and Timone Hospital Marseille; ³Department of Pediatric Hematology and Oncology, University Hospital of Lyon; ⁴Department of Pediatric Onco-Haematology, Children's Hospital of Brabois, Vandoeuvre Les Nancy; ⁵Department of Pediatric Hematology and Oncology, CIC Inserm 501, University Hospital of Clermont-Ferrand; ⁶Pediatric Hematology and Oncology Department, University Hospital L'Archet, Nice; ⁷Pediatric Hematology, University Hospital, Saint Etienne; ⁸Department of Pediatric Hematology and Oncology, University Hospital of Bordeaux; ⁹Department of Pediatric Hematology-Oncology, University Hospital of Grenoble; ¹⁰Pediatric Hematology Department, Trousseau Hospital, Paris; ¹¹Pediatric Hematology Department, Robert Debré Hospital, Paris; ¹²Department of Pediatric Hematology and Oncology, University Hospital of Rennes; ¹³Department of Pediatric Hematology-Oncology, University Hospital, Strasbourg; and ¹⁴Pediatric Hematology and Oncology Department, University Hospital, Montpellier, France

©2016 Ferrata Storti Foundation. This is an open-access paper. doi:10.3324/haematol.2015.140053

Received: December 2, 2015.

Accepted: March 1, 2016.

Pre-published: March 11, 2016.

Correspondence: claire.oudin@ap-hm.fr

Supplemental data

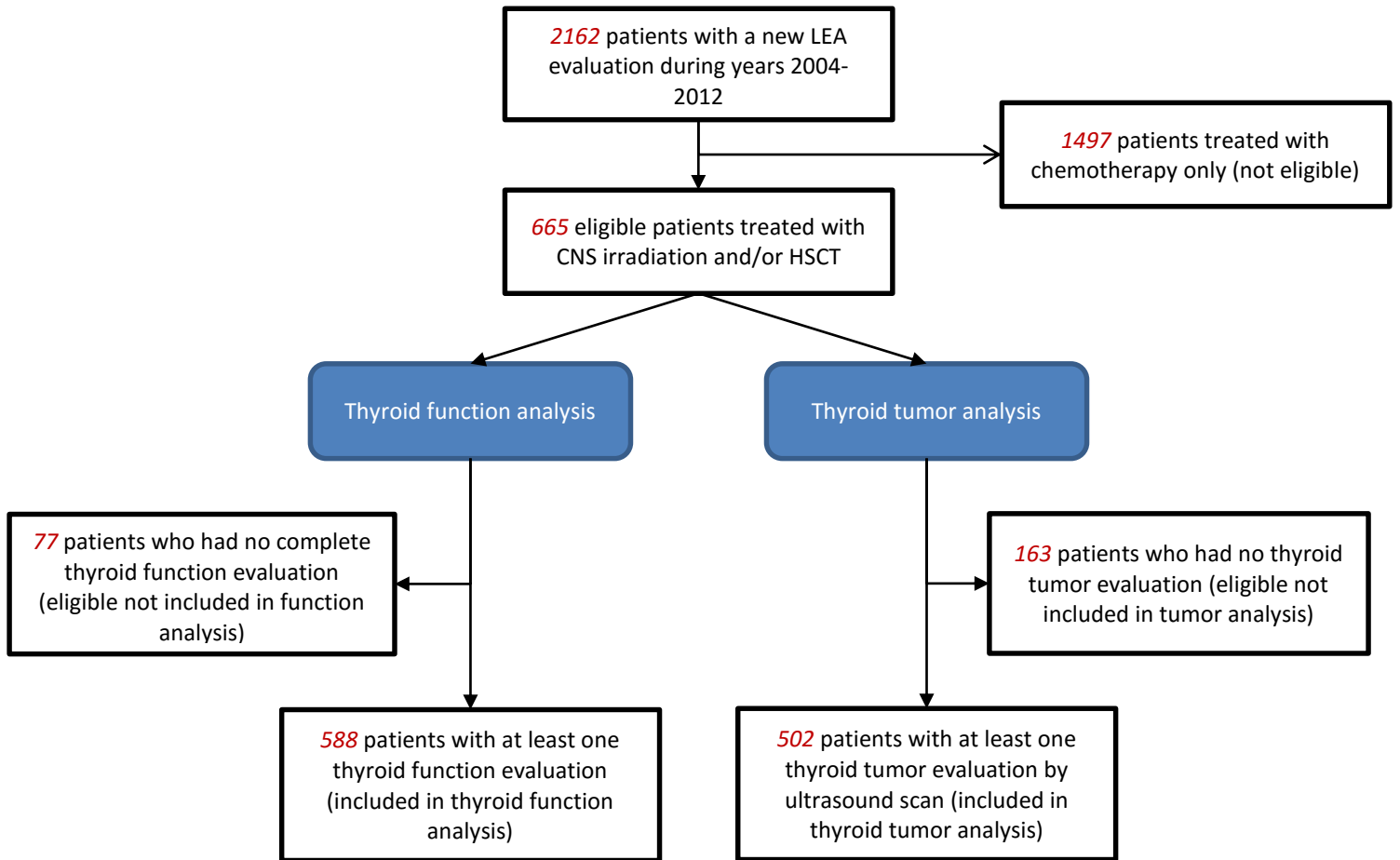
Supplemental methods

Data regarding disease type, treatment modalities, irradiation modalities, and transplantation procedure were collected from the medical records. The chemotherapy protocol and the conditioning regimen depended on the protocols used at the time of transplantation, the underlying disease, disease status, and history of central nervous system irradiation involvement. The central nervous system irradiation dose (18 or 24 grays), field (cranial or cranio-spinal) and indication depended on the protocol used at the time of treatment.

	Hypothyroidism evaluation			Thyroid cancer evaluation		
	Participants group (n=588)	Non participants group (n=77)	p-value	Participants group (n=502)	Non participants group (n=163)	p-value
Gender						
Male <i>n (%)</i>	340 (57.8)	38 (49.3)	0.16	284 (56.6)	94 (57.7)	0.81
Female <i>n (%)</i>	248 (42.2)	39 (50.7)		218 (43.4)	69 (42.3)	
Leukemia type						
Acute myeloid leukemia <i>n (%)</i>	146 (24.8)	15 (19.5)	0.30	118 (23.5)	43 (26.4)	0.46
Acute lymphoid leukemia <i>n (%)</i>	442 (75.2)	62 (80.5)		384 (76.5)	120 (73.6)	
Relapse						
Yes	237 (40.3)	13 (16.9)	<10⁻³	207 (41.2)	43 (26.4)	0.001
No	351 (59.7)	64 (83.1)		295 (58.5)	120 (73.6)	
Age at leukemia diagnosis (years)						
Median (<i>min-max</i>)	6.5 (3.4-11.2)	6.3 (3.4-11.7)	0.81	7.4 ± 0.2	7.2 ± 0.4	0.72
Treatment modality						
CNS irradiation, no HSCT <i>n (%)</i>	143 (24.3)	51 (66.2)	<10⁻³	119 (23.7)	75 (46)	<10⁻³
HSCT with TBI, with previous CNS irradiation <i>n (%)</i>	21 (3.6)	2 (2.6)		19 (3.8)	4 (2.5)	
HSCT with TBI, without previous CNS irradiation <i>n (%)</i>	289 (49.1)	8 (10.4)		255 (30.9)	42 (25.8)	
HSCT without TBI, with previous CNS irradiation <i>n (%)</i>	15 (2.6)	1 (1.3)		10 (2)	6 (3.7)	
HSCT without TBI, without previous CNS irradiation <i>n (%)</i>	120 (20.4)	15 (19.5)		99 (19.7)	36 (22.1)	
Age at transplantation/irradiation						
< 10 years <i>n (%)</i>	361 (61.4)	50 (64.9)	0.55	306 (61)	105 (64.4)	0.43
≥ 10 years <i>n (%)</i>	227 (38.6)	27 (35.1)		196 (39)	58 (35.6)	
Hematopoietic stem cell transplantation (HSCT) type						
Autologous <i>n(% of transplanted patients)</i>	91 (20.4)	1 (3.8)	0.04	70 (18.3)	22 (25)	0.15
Allogeneic <i>n(% of transplanted patients)</i>	354 (79.6)	25 (96.2)		313 (81.7)	66 (75)	
Age at transplantation (years)						
	8.8 ± 0.2	7.8 ± 1.0	0.32	8.9 ± 0.3	8.2 ± 0.5	0.26
Conditioning regimen before HSCT						
TBI-based <i>n(% of transplanted patients)</i>	310 (69.7)	10 (38.5)	0.001	274 (71.5)	46 (52.3)	<10⁻³
Non-TBI based <i>n(% of transplanted patients)</i>	135 (30.3)	16 (61.5)		109 (28.5)	42 (47.7)	
Central nervous system (CNS) irradiation						
Yes <i>n (%)</i>	179 (30.4)	54 (70.1)	<10⁻³	148 (29.5)	85 (52.1)	<10⁻³
No <i>n (%)</i>	409 (69.6)	23 (29.9)		354 (70.5)	78 (47.9)	
Age at CNS irradiation (years)						
	8.5 ± 0.3	8.6 ± 0.7	0.84	8.6 ± 0.4	8.4 ± 0.5	0.70
CNS irradiation type						
Cranial irradiation <i>n(% of CNS irradiation recipients)</i>	122 (68.2)	41 (75.9)	0.25	106 (71.6)	57 (67)	0.48
Cerebro spinal irradiation <i>n(% of CNS irradiation recipients)</i>	53 (29.6)	12 (22.2)		39 (26.4)	26 (30.6)	
Unknown <i>n(% of CNS irradiation recipients)</i>	4 (2.2)	1 (1.9)		3 (2)	2 (2.4)	
CNS irradiation dose						
18 grays <i>n(% of CNS irradiation recipients)</i>	134 (74.9)	39 (72.2)	0.10	114 (77)	59 (69.4)	0.32
24 grays <i>n(% of CNS irradiation recipients)</i>	36 (20.1)	7 (13)		23 (15.5)	20 (23.5)	

Other <i>n</i> (% of CNS irradiation recipients)	8 (4.5)	6 (11.1)		9 (6.1)	5 (5.9)	
Time from diagnosis to last visit (years)	12.6 [6.4-	13.9 [6.0-	0.49	12.5 [6.4-	13.9 [6.3-	0.45
<i>Median (min-max)</i>	18.8]	21.3]		19.1]	19.1]	

Supplemental Table 1. Patients' characteristics. Comparison between participant and non participant patients. CNS: central nervous system; HSCT: hematopoietic stem cell transplantation; TBI: total body irradiation



Supplemental figure: flow chart. CNS: central nervous system, HSCT: hematopoietic stem cell transplantation

	Number (%)	p-value	10 years Cumulative incidence (%)	[95%CI]	20 years Cumulative incidence (%)	[95%CI]
Gender						
Male	49 (14.5)		15.0	[11.3-19.9]	18.4	[13.9-24.1]
Female	50 (20.4)	0.16	18.5	[13.7-24.9]	28.8	[22.0-37.3]
Leukemia type						
Acute myeloid leukemia	15 (10.3)		11.4	[6.9-18.7]	14.5	[8.2-24.9]
Acute lymphoid leukemia	84 (19.2)	0.09	18.0	[14.3-22.5]	25.3	[20.5-31.0]
Age at transplantation/irradiation						
< 10 years	71 (19.8)		18.6	[14.6-23.6]	26.2	[20.9-32.4]
≥ 10 years	28 (12.5)	0.13	13.2	[8.7-19.8]	16.9	[11.4-24.8]
Hematopoietic stem cell transplantation type						
Autologous	22 (25.3)		20.6	[13.3-31.1]	25.3	[17.0-36.6]
Allogeneic	71 (20.2)	0.46	22.8	[17.9-28.7]	32.5	[25.4-41.1]
Treatment modality						
HSCT without TBI. without previous CNS irradiation	9 (7.5)		7.0	[3.5-13.5]	12.1	[4.9-28.4]
CNS irradiation. no HSCT	6 (4.2)		1.0	[0.1-6.8]	5.0	[1.9-13.2]
HSCT with TBI. with previous CNS irradiation	6 (33.3)	<10 ⁻³	23.0	[9.3-50.3]	30.0	[13.6-58.1]
HSCT with TBI. without previous CNS irradiation	72 (25.1)		28.4	[22.7-35.1]	34.7	[28.2-42.3]
HSCT without TBI. with previous CNS irradiation	6 (42.9)		14.9	[3.9-47.7]	39.8	[18.7-71.2]
CNS irradiation type						
Cranial irradiation	10 (8.4)		3.7	[1.4-9.5]	8.1	[3.8-16.6]
Cerebro spinal irradiation	7 (13.5)	0.37	4.8	[1.2-17.7]	17.6	[8.1-35.8]
CNS irradiation dose						
18 grays	7 (5.4)		2.8	[0.9-8.6]	7.0	[3.1-15.2]
24 grays	8 (22.2)		6.8	[1.7-25.0]	23.9	[11.4-46.0]
Other	3 (37.5)	0.01	25.0	[6.9-68.5]	25.0	[6.9-68.5]

Supplemental Table 2. Univariate analysis: risk factors for **primary** hypothyroidism (n=582). CNS: central nervous system; HSCT: hematopoietic stem cell transplantation; TBI: total body irradiation

Variables	N	%	aHR	95%CI	p-value
Age at transplantation/irradiation					
< 10 years	358	61.5	1		
≥ 10 years	224	38.5	0.58	0.37-0.91	0.02
Gender					
Male	337	57.9	1		
Female	245	42.1	1.46	0.97-2.17	0.07
Leukemia type					
Acute lymphoid leukemia	437	75.1	1		
Acute myeloid leukemia	145	24.9	0.60	0.31-1.13	0.12
Treatment modality					
HSCT without TBI, without previous CNS irradiation	120	20.6	1		
CNS irradiation, no HSCT	143	24.6	0.26	0.09-0.80	0.02
HSCT with TBI, with previous CNS irradiation	18	3.1	2.15	0.69-6.64	0.18
HSCT with TBI, without previous CNS irradiation	287	49.3	2.69	1.22-5.91	0.01
HSCT without TBI, with previous CNS irradiation	14	2.4	3.04	1.05-8.78	0.04

Supplemental Table 3. Risk factors for **primary** hypothyroidism: multivariate analysis (n=582). CNS: central nervous system; HSCT: hematopoietic stem cell transplantation; TBI: total body irradiation. In bold: significant values

The L.E.A study group

Marseille: ALLOIN Anne-Lise, AUQUIER Pascal, BARLOGIS Vincent, BERBIS Julie, CHAMBOST Hervé, CURTILLET Catherine, ESMIOL Sophie, GALAMBRUN Claire, GARNIER Floriane, MICHEL Gérard, ORBICINI Delphine, OUDIN Claire, THURET Isabelle, VERCASSON Camille, VILLES Virginie,

Nancy: CHASTAGNER Pascal, CLEMENT Laurence, CONTET Audrey, FOUYSSAC Fanny, LEMELLE Irène, MANSUY Ludovic, PERNET Marjolaine, PERROT Aurore, PHULPIN Aurélie, POCHON Cécile, SCHMITT Claudine, SERRIER Caroline,

Nice: BELLMANN-ROQUEPLAN Françoise, DEVILLE Anne, HATHROUBI Chokri, LE MEIGNEN-DIOP Marion, MONPOUX Fabrice, POIREE Maryline, ROHRICH Pierre-Simon, SOLER Christine,

Clermont-Ferrand: CHAMBON Fanny, DORE Eric, ISFAN Florentina, KANOLD Justyna, ROUEL Nadège,

Grenoble: ADJAOUD Dalila, ARMARI-ALLA Corinne, CACACE Sophie, PAGNIER Anne, PLANTAZ Dominique, SCHIFF Isabelle,

Lyon: BERTRAND Yves, GARNIER Nathalie, HALFON-DOMENECH Carine, HU Julie-Yi, KEBÄILI Kamila, RENARD Cécile,

Paris Trousseau: AUVRIGNON Anne, BOUAYAD AGHA Latéfa, DOLLFUS Catherine, DONADIEU Jean, FASOLA Sylvie, LANDMAN-PARKER Judith, LEVERGER Guy, PELLEGRINO Béatrice, PETIT Arnaud, TABONE Marie Dominique,

St Etienne: BERGER Claire, DAVID Audrey, ODIER Françoise, STEPHAN Jean Louis, THOUVENIN-DOULET Sandrine,

Rennes: BAYART Sophie, BONNEAU Jacinthe, CHAPPE Céline, GANDEMER Virginie, LAMOUR Anne-Marie, SOK-FEDELE Phaktra, TAQUE Sophie, TOUTAIN Fabienne,

Montpellier: HAOUY Stéphanie, MOPHAWE Ornellia, SAUMET Laure, SIRVENT Nicolas, SIRVENT Anne,

Paris St Louis – Robert Debré: BARUCHEL André, BRETHON Benoît, LEBLANC Thierry, MOUKOKO Marie-Noelle, RAY-LUNVEN Anne-France, AVRAN David, AZARNOUSH Saba, CUINET Aurélie, DALLE Jean-Hugues, DUQUESNE Frédérique, FAHD Raymonda, LESCOEUR Brigitte, OUACHEE-CHARDIN Marie, YAKOUBEN Karima,

Bordeaux: ALADJIDI Nathalie, ANSOBORLO Sophie, DE BOUYN-ICHER Céline, DUCASSOU Stéphane, JUBERT Charlotte, MERCHED Maria, NOTZ-CARRERE Anne, PEREL Yves, VERITE-GOULARD Cécile,

Strasbourg: CERON-DURAN Sofia, LUTZ Patrick, PAILLARD Catherine, SPIEGEL Alexandra,

Angers: BERARDI Elsa, BRASME Jean-François, COLIN Laure, DE CARLI Emilie, DUPLAN Mylène, PELLIER Isabelle, PROUST-HOUEMONT Stéphanie.