

Single or tandem autologous stem-cell transplantation for first-relapsed or refractory Hodgkin lymphoma: 10-year follow-up of the prospective H96 trial by the LYSA/SFGM-TC study group

David Sibon,¹ Franck Morschhauser,² Matthieu Resche-Rigon,³ David Ghez,⁴ Jehan Dupuis,⁵ Ambroise Marçais,¹ Bénédicte Deau-Fischer,⁶ Reda Bouabdallah,⁷ Catherine Sebban,⁸ Gilles Salles,⁹ and Pauline Brice³

¹Hématologie, Hôpital Universitaire Necker – Enfants Malades, Assistance Publique – Hôpitaux de Paris (AP–HP), Université Paris Descartes – Sorbonne Paris Cité, Imagine Institute; ²Hôpital Claude Huriez, Lille; ³Hôpital Saint-Louis, AP–HP, Université Paris Diderot, Sorbonne Paris Cité; ⁴Institut Gustave Roussy, Villejuif; ⁵Hôpital Henri-Mondor, AP–HP, Université Paris-Est, Créteil; ⁶Hôpital Cochin, AP–HP, Université Paris Descartes, Sorbonne Paris Cité; ⁷Institut Paoli-Calmettes, Marseille; ⁸Centre Léon Bérard, Lyon; and ⁹Centre Hospitalier Lyon-Sud, Hospices Civils de Lyon, Université Claude-Bernard Lyon 1, Pierre-Bénite, France

©2016 Ferrata Storti Foundation. This is an open-access paper. doi:10.3324/haematol.2015.136408

Received: September 9, 2015.

Accepted: December 17, 2015

Pre-published: December 31, 2015.

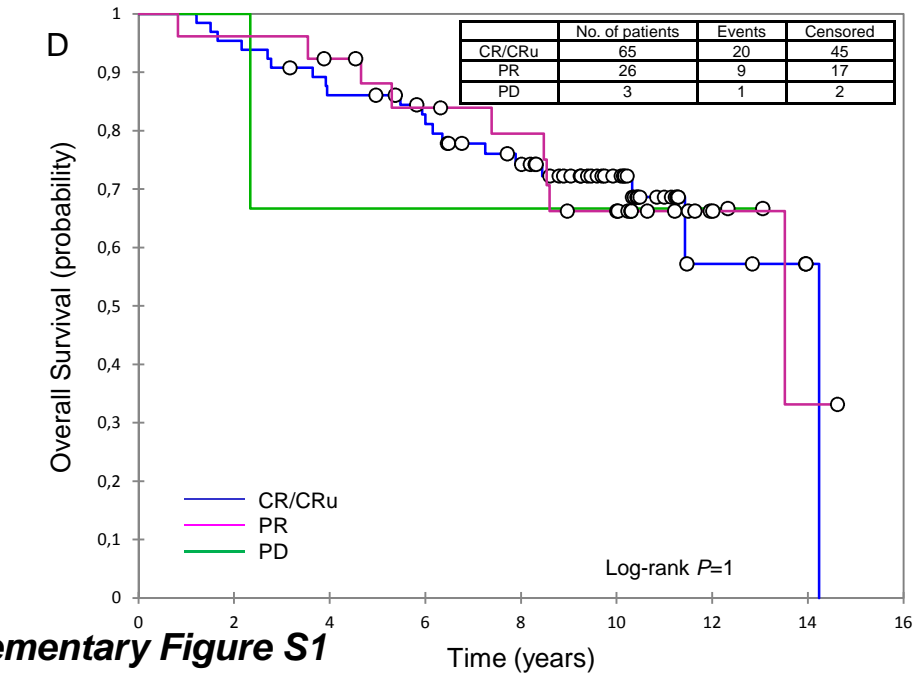
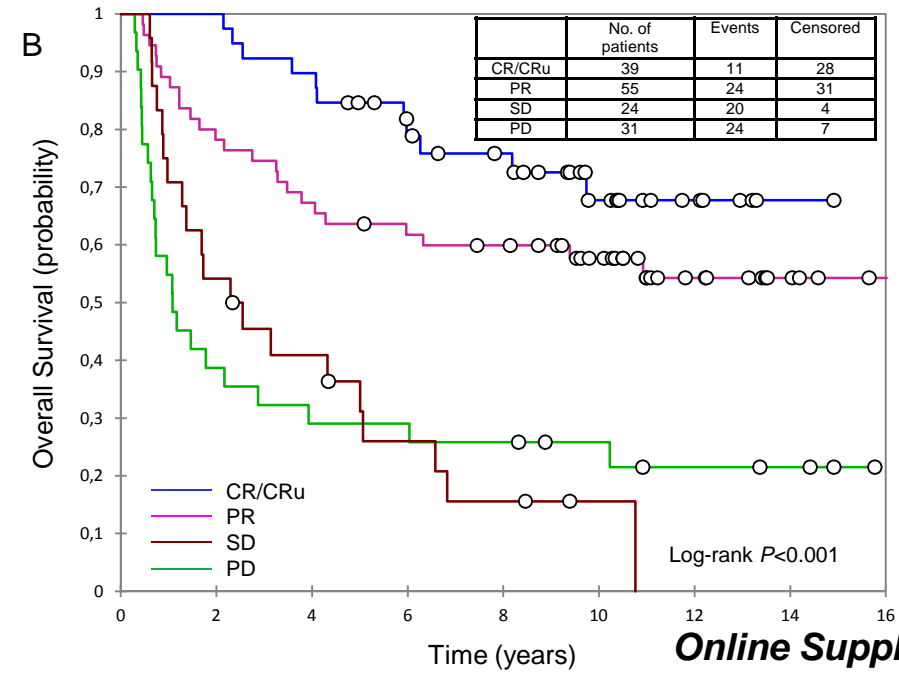
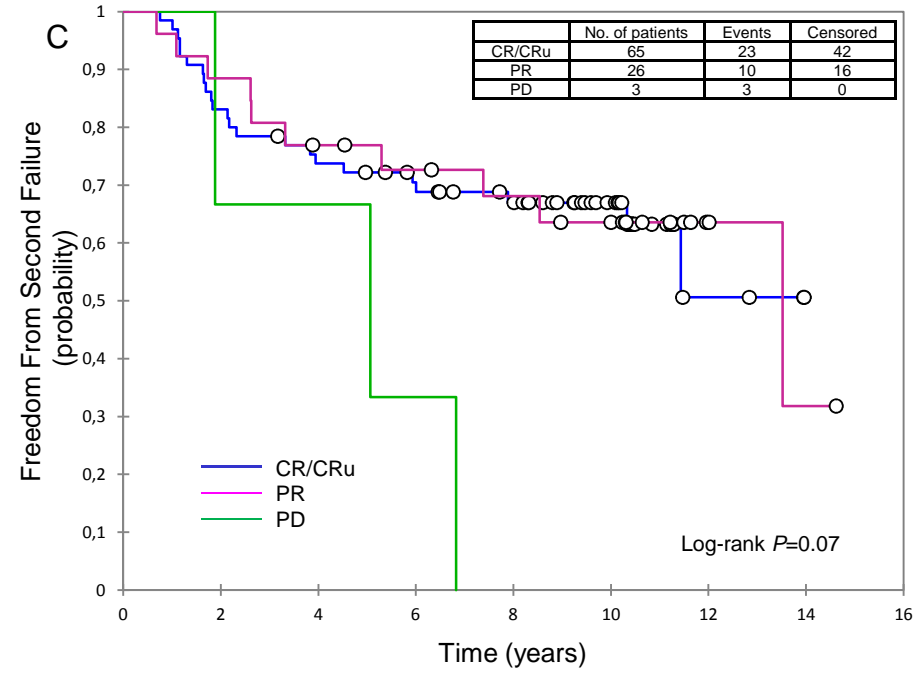
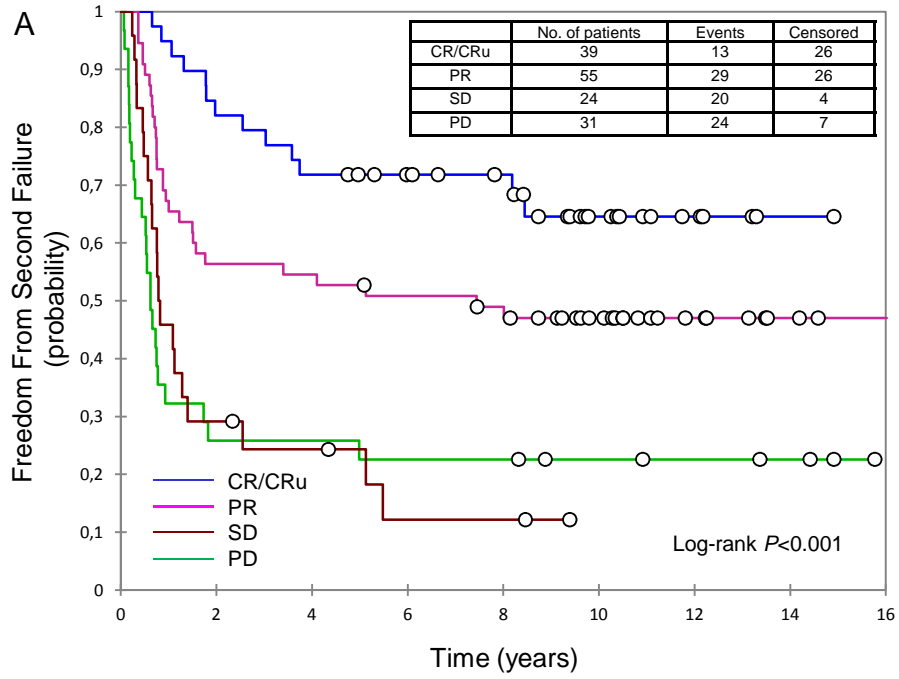
Correspondence: david.sibon@aphp.fr

Supplemental data

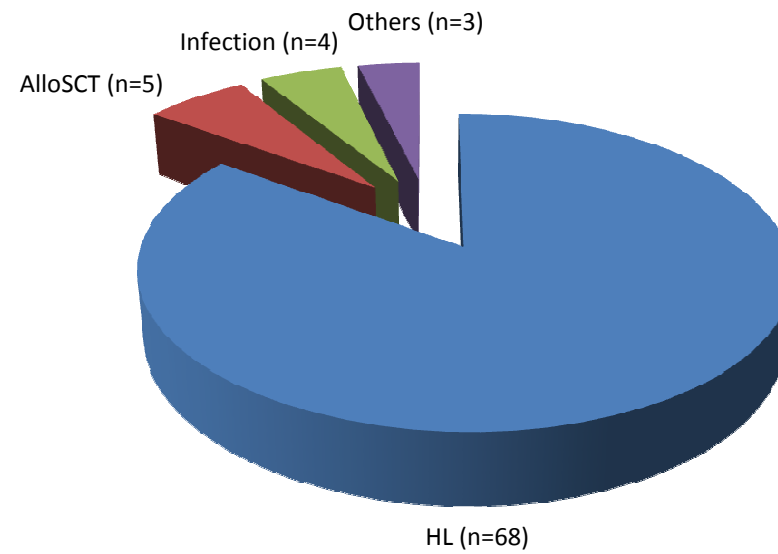
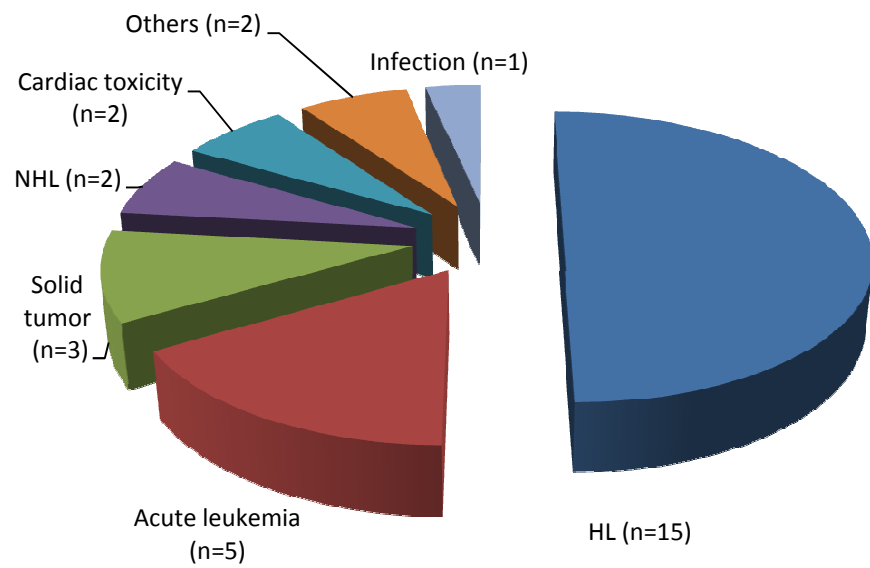
Online Supplementary Figure S1. Outcomes according to the response to salvage treatment. (A) Freedom from second failure (FF2F) and (B) overall survival (OS) of poor-risk patients. (C) FF2F and (D) OS of intermediate-risk patients.

Online Supplementary Figure S2. Distribution of causes of death according to risk group.

Online Supplementary Figure S3. Cumulative incidence of secondary primitive malignancies (SPM) and cardiovascular events (CE) according to risk group. Cumulative incidence of SPM (A) for the whole population and (B) for patients who did not relapse after completing autologous stem-cell transplantation (ASCT). Cumulative incidence of CE (C) for the whole population and (D) for patients who did not relapse after completing ASCT.



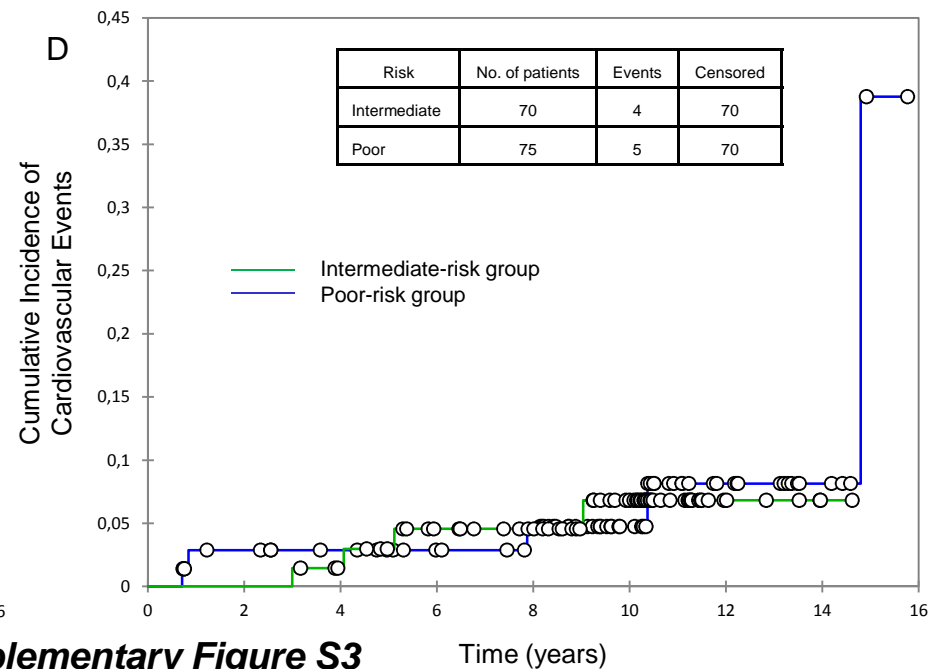
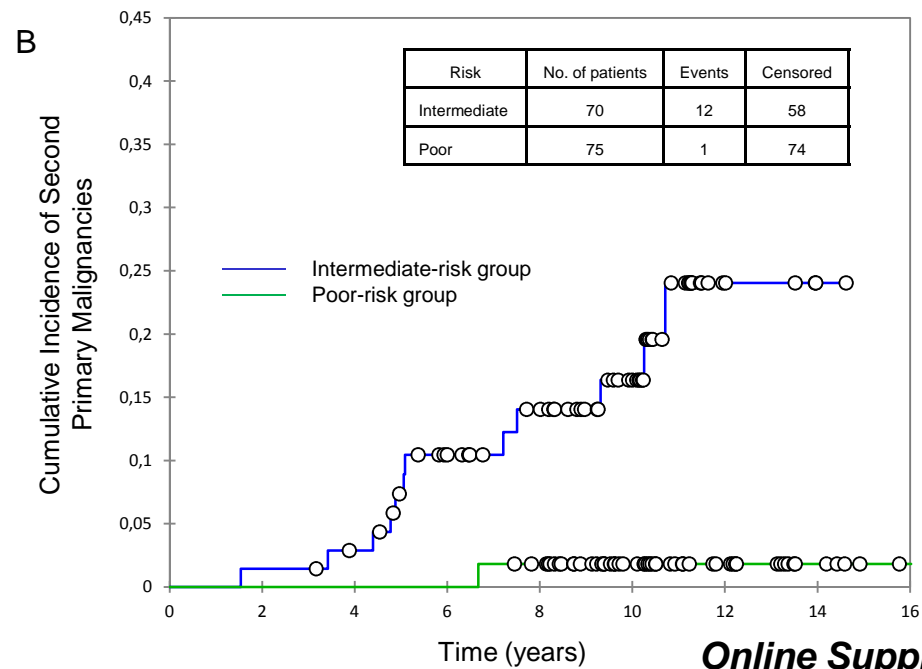
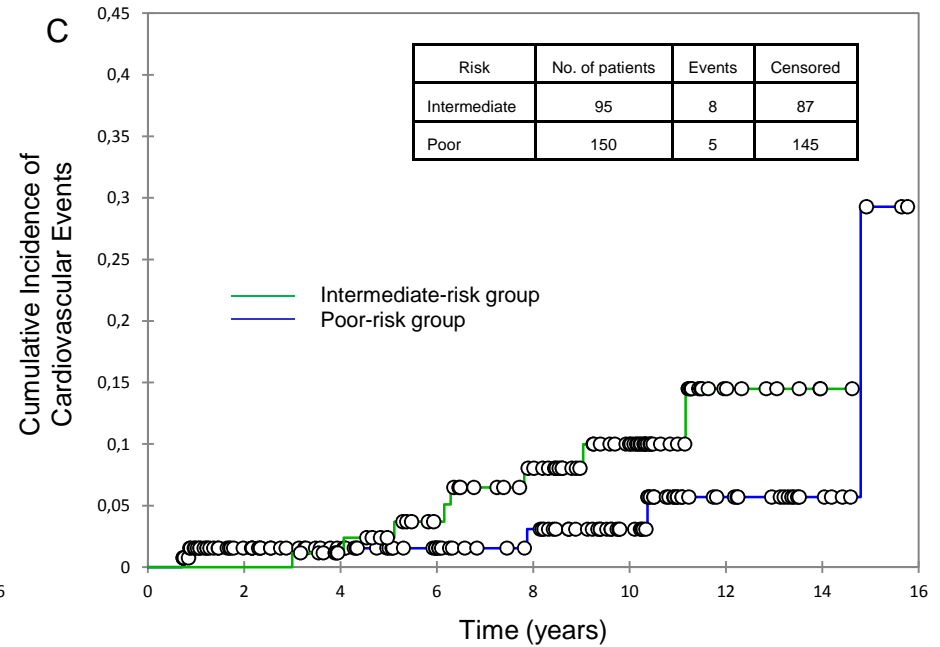
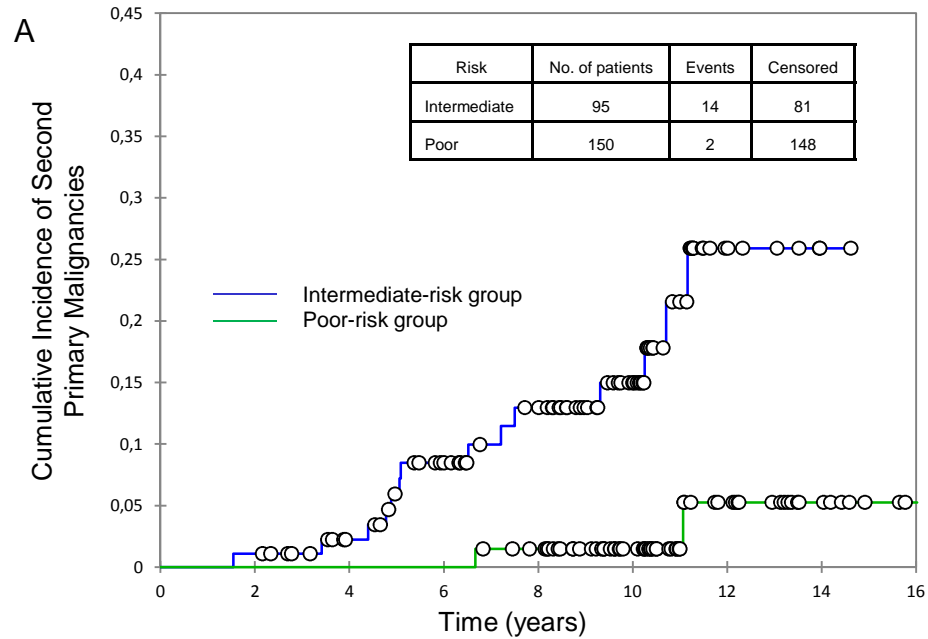
Online Supplementary Figure S1



Intermediate-risk group (n=30)

Poor-risk group (n=80)

Online Supplementary Figure S2



Online Supplementary Figure S3