

Functional characterization of a subpopulation of coated platelets that function in platelet-dependent fibrin formation via transglutaminase factor XIII and integrin $\alpha_{IIb}\beta_3$

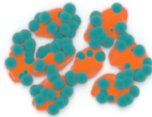


Platelet-rich plasma, washed platelets, whole blood

- healthy volunteers vs patient with Glanzmann thrombasthenia
- transglutaminase inhibitors vs F13a1 deficient mice



○ Flow cytometry analysis (+ Rhod-A14 probe)



Identification of a cross-linked protein coated platelet subpopulation convulxin/thrombin-activated



functional analysis

- flow cytometry
- confocal microscopy



- $\alpha_{IIb}\beta_3$ activation
- high fibrinogen binding
- exposure of phosphatidylserine
- function in platelet-dependent star-like fibrin fiber formation via transglutaminase factor XIII and integrin $\alpha_{IIb}\beta_3$