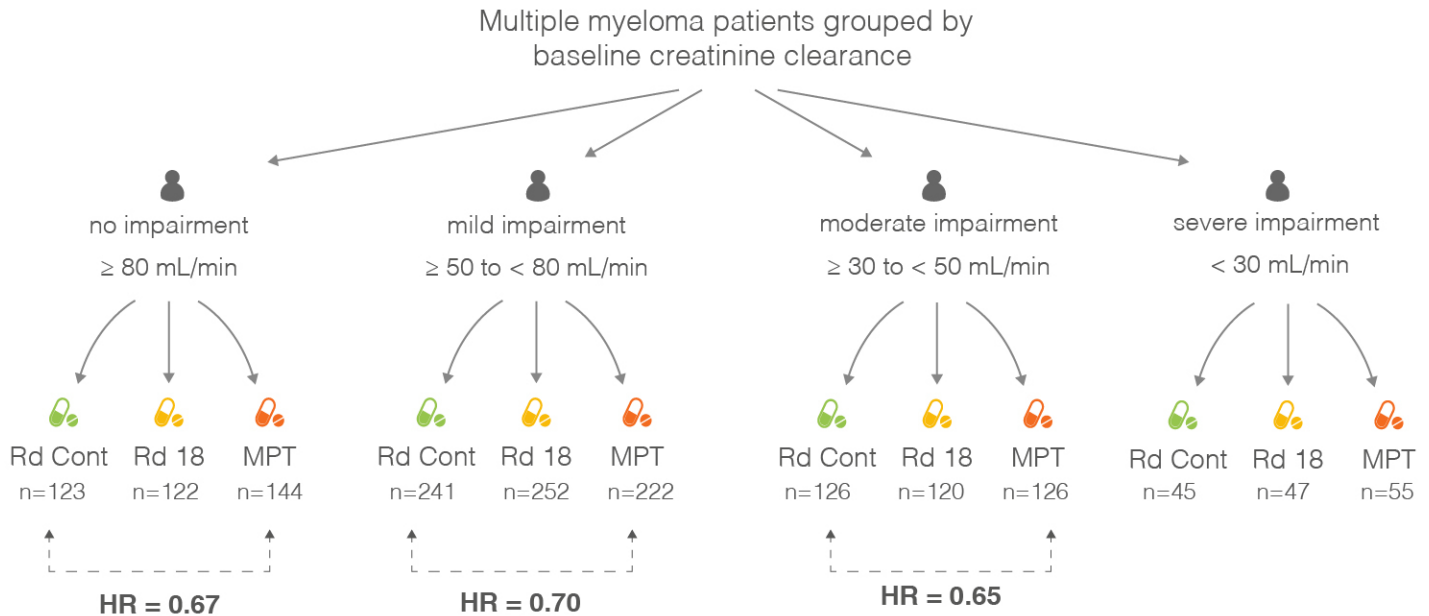


Continuous lenalidomide and dexamethasone reduced the risk of progression or death in no (HR = 0.67), mild (HR = 0.70), and moderate (HR = 0.65) renal impairment subgroups vs melphalan-prednisone-thalidomide



Renal function improved from baseline in 52.6% of lenalidomide and dexamethasone-treated patients

continuous lenalidomide and dexamethasone until disease progression

lenalidomide and dexamethasone for 18 cycles

melphalan-prednisone-thalidomide for 12 cycles