

Prospective long-term minimal residual disease monitoring using RQ-PCR in RUNX1-RUNX1T1-positive acute myeloid leukemia: results of the French CBF-2006 trial

Christophe Willekens,¹ Odile Blanchet,² Aline Renneville,³ Pascale Cornillet-Lefebvre,⁴ Cécile Pautas,⁵ Romain Guieze,⁶ Norbert Ifrah,⁷ Hervé Dombret,⁸ Eric Jourdan,⁹ Claude Preudhomme³ and Nicolas Boissel,⁸ on behalf of the French AML Intergroup

¹Maladie du Sang, Hôpital Claude Huriez, Lille; ²Département Hématologie-Immunologie CHU Angers, Tumor Bank CHU-ICO, CRB-CHU Angers, BB-0033-00038, UMR Inserm 892 CNRS 6299 CRCNA, Université d'Angers; ³Laboratoire d'hématologie, Centre de Biologie-Pathologie, CHRU de Lille; Equipe 3 INSERM U837, JPARC Lille; ⁴Laboratoire d'Hématologie, Centre Hospitalier Universitaire de Reims; ⁵Hématologie Clinique, Centre Hospitalier Henri Mondor, Créteil; ⁶Hématologie Clinique, Centre Hospitalier Universitaire, Clermont-Ferrand; ⁷Hématologie Clinique, Centre Hospitalier Universitaire, Angers; ⁸Département d'Hématologie, Hôpital Saint-Louis, EA3518, Institut Universitaire d'Hématologie, Université Paris 7; and ⁹Service d'Hématologie, Centre Hospitalier Universitaire de Nîmes, France

©2016 Ferrata Storti Foundation. This is an open-access paper. doi:10.3324/haematol.2015.131946

Received: June 18, 2015.

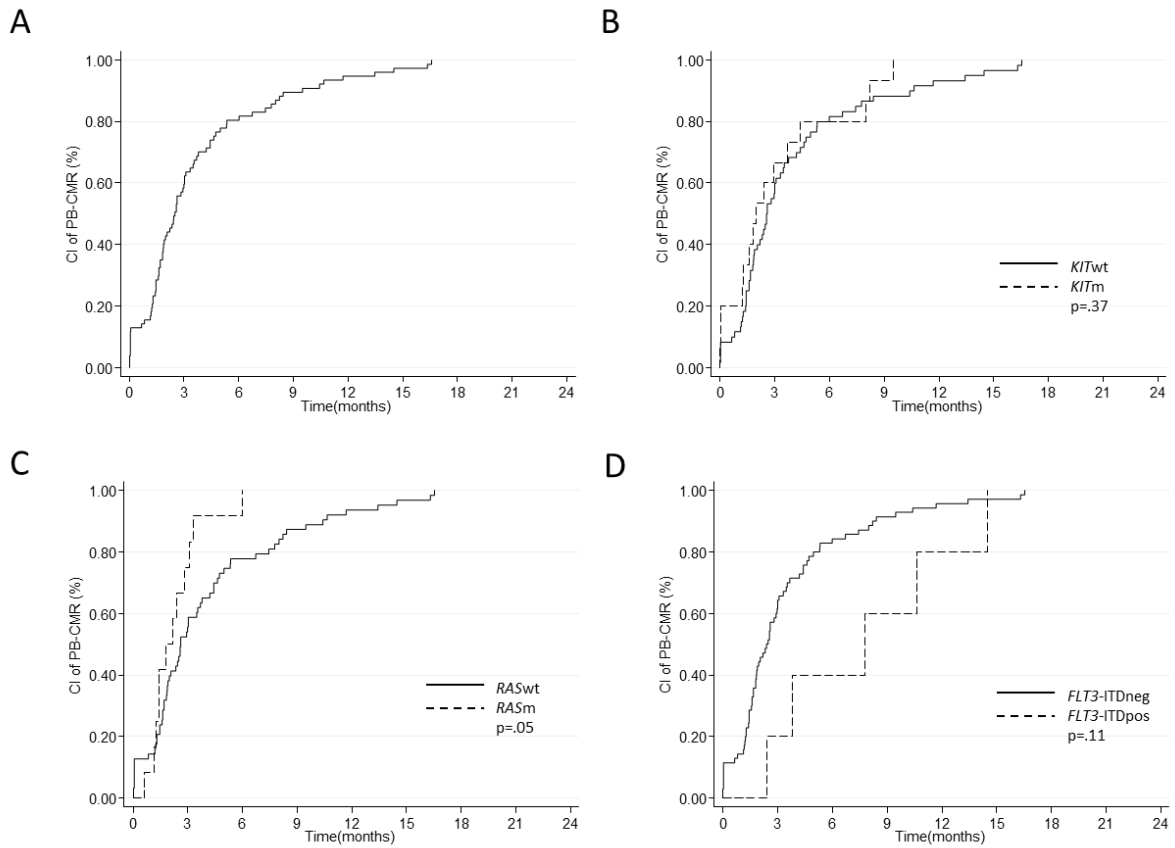
Accepted: November 26, 2015.

Pre-published: December 3, 2015.

Correspondence: nicolas.boissel@sls.aphp.fr

Supplemental data

Supplemental figure 1. Cumulative incidence of PB-CMR (A) according to mutation profile: *KIT* mutations (B), *RAS* mutations (C), and *FLT3*-ITD (D).



Supplemental figure 2. Kinetic of PB-MRD in 22 patients with PB-MRD assessed at relapse.

