

Low non-relapse mortality and long-term preserved quality of life in older patients undergoing matched related donor allogeneic stem cell transplantation: a prospective multicenter phase II trial

Didier Blaise,^{1,2,3} Raynier Devillier,^{1,2,3} Anne-Gaëlle Lecoroller-Sorriano,⁴ Jean-Marie Boher,⁵ Agnès Boyer-Chammard,⁵ Reza Tabrizi,⁶ Patrice Chevallier,⁷ Nathalie Fegueux,⁸ Anne Sirvent,⁸ Mauricette Michallet,⁹ Jacques-Olivier Bay,¹⁰ Sabine Fürst,¹ Jean El-Cheikh,¹ Laure Vincent,⁸ Thierry Guillaume,⁷ Caroline Regny,¹¹ Noël Milpied,⁶ Luca Castagna,¹ and Mohamad Mohty^{7,12,13}

¹Hematology Department, Transplantation Unit, Paoli Calmettes Institute, Marseille; ²Centre de Recherche sur le Cancer de Marseille (CRCM), Inserm U 1068; ³Aix-Marseille University, Marseille; ⁴Mixed Research Unit 912, Institute of Research and Development, National Institute of Health and Medical Research, Paoli Calmettes Institute, Aix-Marseille University, Marseille; ⁵Clinical Trial Office and Biostatistics Unit, Paoli Calmettes Institute, Marseille; ⁶Hematology Department, Haut-Leveque Hospital and Bordeaux University Hospital Center, Pessac; ⁷Hematology Department, University Hospital Center, Nantes; ⁸Hematology Department, University Hospital Center, Montpellier; ⁹Hematology Department, University Hospital Center, Lyon; ¹⁰Hematology Department, University Hospital Center, Clermont-Ferrand; ¹¹Hematology Department, University Hospital Center, Grenoble; ¹²CRNCA, UMR 892 INSERM - 6299 CNRS, and Université de Nantes, Faculté de Médecine, Nantes, France; and ¹³Hematology and Cellular Therapy Unit, AP-HP, Université Paris 6, Hôpital Saint Antoine, Paris, France

©2015 Ferrata Storti Foundation. This is an open-access paper. doi:10.3324/haematol.2014.113571

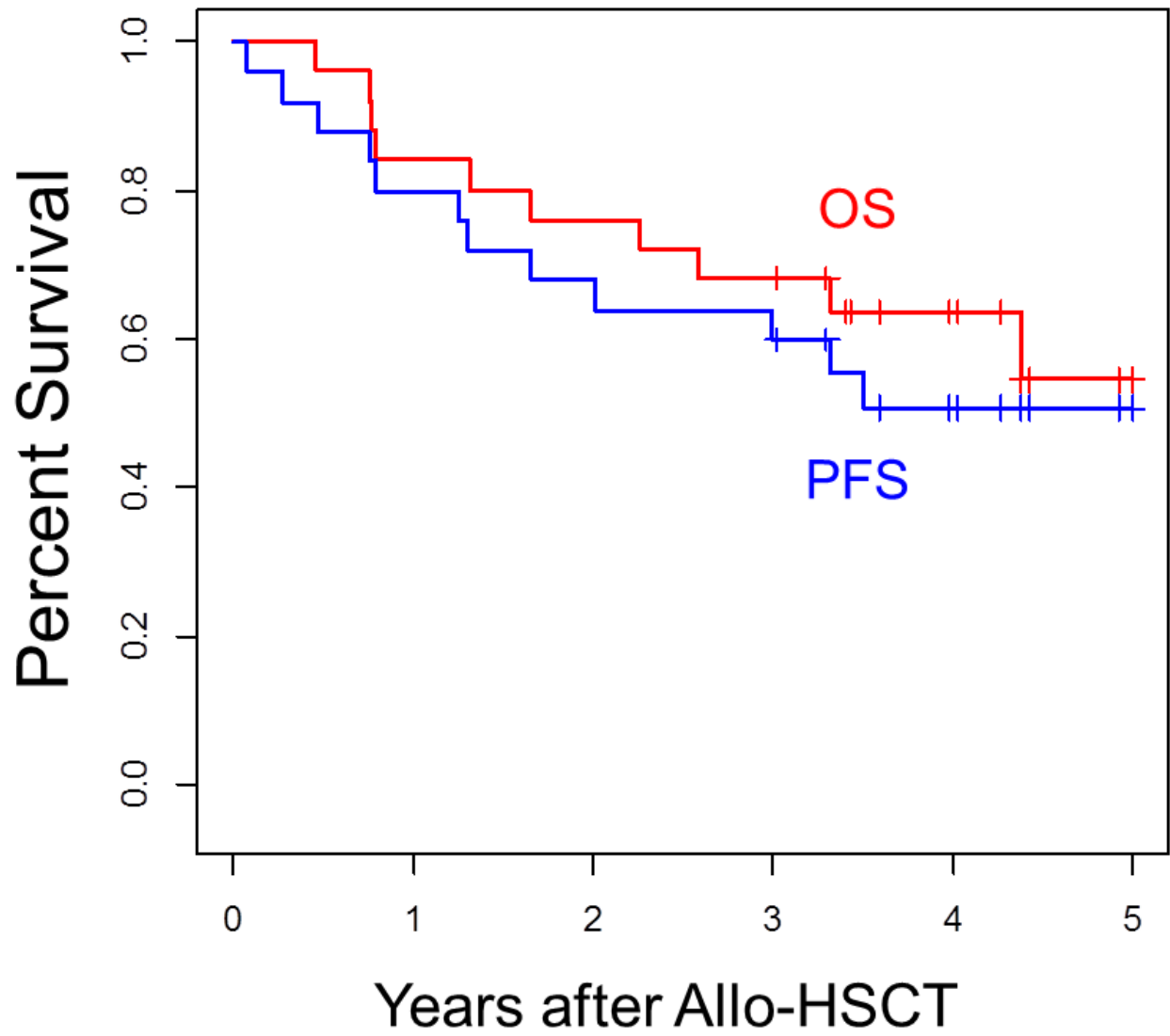
Manuscript received on July 11, 2014. Manuscript accepted on November 20, 2014.

Correspondence: blaised@ipc.unicancer.fr

Supplemental Table 1: Causes of death in the 33 dead patients

Causes of death	N
Non-relapse-related deaths	11 (33%)
Infection and chronic GVHD	3 (9%)
Infection and acute GVHD	1 (3%)
Infection without GVHD	2 (6%)
Secondary cancer	2 (6%)
Cerebral hemorrhage	1 (3%)
Acute coronary syndrome	1 (3%)
Liver Cirrhosis	1 (3%)
Relapse-related deaths	22 (67%)

Supplemental Figure 1: OS and PFS in the 25 patients transplanted for AML/MDS in CR1



Supplemental Figure 2: Mean arithmetic scores of EORTC scores during the first year after transplantation

