

# Multiple myeloma and infections: a population-based study on 9253 multiple myeloma patients

Cecilie Blimark,<sup>1</sup> Erik Holmberg,<sup>2</sup> Ulf-Henrik Mellqvist,<sup>1</sup> Ola Landgren,<sup>3</sup> Magnus Björkholm,<sup>4</sup> Malin Hultcrantz,<sup>4</sup> Christian Kjellander,<sup>4</sup> Ingemar Turesson,<sup>5</sup> and Sigurdur Y. Kristinsson<sup>4,6</sup>

<sup>1</sup>Department of Hematology, Sahlgrenska University Hospital and Department of Medicine, Sahlgrenska Academy, University of Gothenburg, Sweden; <sup>2</sup>Department of Oncology, Institute of Clinical Sciences, Sahlgrenska Academy, University of Gothenburg, Sweden; <sup>3</sup>Myeloma Service, Division of Hematology Oncology, Department of Medicine, Memorial Sloan-Kettering Cancer Center, New York, NY, USA; <sup>4</sup>Department of Medicine, Division of Hematology, Karolinska University Hospital and Karolinska Institutet, Stockholm, Sweden; <sup>5</sup>Skåne University Hospital Malmö, Malmö, Sweden; and <sup>6</sup>Faculty of Medicine, University of Iceland, Reykjavik, Iceland

---

©2015 Ferrata Storti Foundation. This is an open-access paper. doi:10.3324/haematol.2014.107714

Manuscript received on March 24, 2014. Manuscript accepted on October 21, 2014.

Correspondence: cecilie.blimark@vgregion.se

## Supplements

### Appendix

**Table S1: Cumulative incidence of first bacterial and viral infection over time in myeloma patients and their matched controls**

<b>Calendar period</b>	<b>Myeloma % (95%CI)</b>	<b>Controls % (95%CI)</b>
<b>Bacterial infection</b>		
1988-1993	14.4 (13.3-15.7)	4.5 (4.1-4.8)
1994-1999	35.8 (34.2-37.5)	9.4 (8.9-10.0)
2000-2004	46.0 (44.0-47.9)	10.4 (9.8-11.0)
<b>Viral infection</b>		
1988-1993	4.8 (4.1-5.6)	0.8 (0.6-0.9)
1994-1999	6.3 (5.5-7.1)	0.9 (0.8-1.1)
2000-2004	6.2 (5.4-7.2)	0.7 (0.6-0.9)

#### Legend to figures:

**Figure S1: Cumulative incidence of first bacterial infection over time in myeloma patients and their matched controls**

**Figure S2: Cumulative incidence of first viral infection over time in myeloma patients and their matched controls**

**Figure S3: Cumulative incidence of first influenza infection over time in myeloma patients and their matched controls**

Figure S1

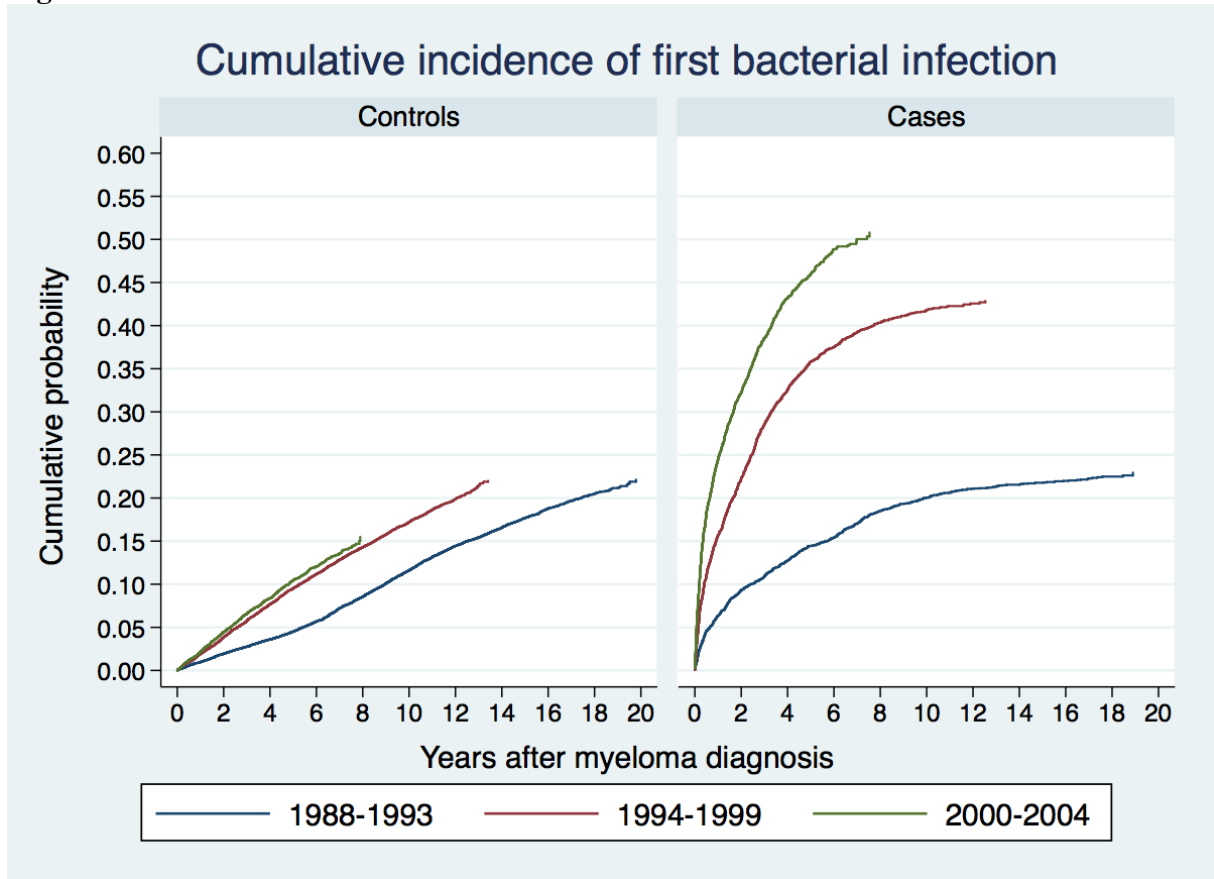


Figure S2

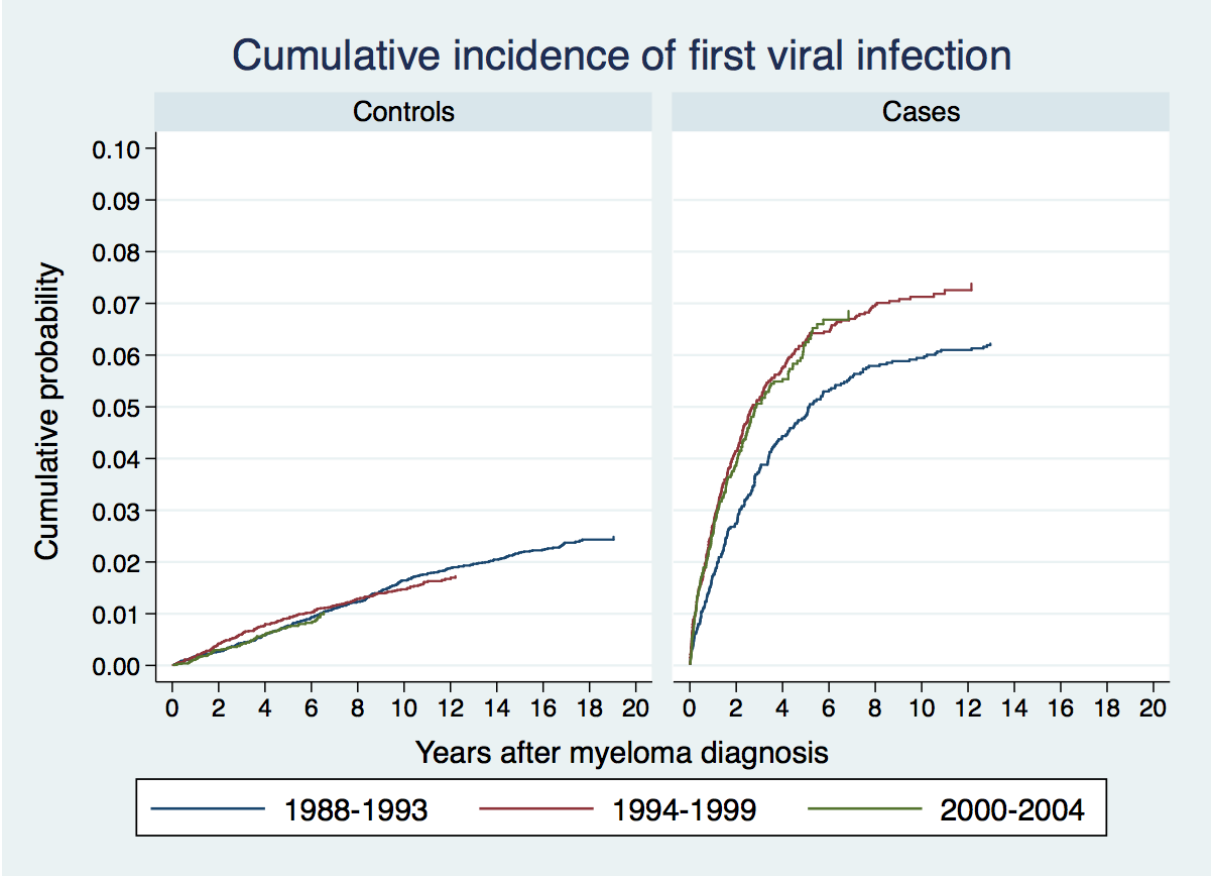


Figure S3

