

# Impact of the International Prognostic Scoring System cytogenetic risk groups on the outcome of patients with primary myelodysplastic syndromes undergoing allogeneic stem cell transplantation from human leukocyte antigen-identical siblings: a retrospective analysis of the European Society for Blood and Marrow Transplantation-Chronic Malignancies Working Party

Francesco Onida,<sup>1</sup> Ronald Brand,<sup>2</sup> Anja van Biezen,<sup>3</sup> Michel Schaap,<sup>4</sup> Peter A. von dem Borne,<sup>2</sup> Johan Maertens,<sup>5</sup> Dietrich W. Beelen,<sup>6</sup> Enric Carreras,<sup>7</sup> Emilio P. Alessandrino,<sup>8</sup> Liisa Volin,<sup>9</sup> Jürgen H.E. Kuball,<sup>10</sup> Angela Figuera,<sup>11</sup> Jorge Sierra,<sup>12</sup> Jürgen Finke,<sup>13</sup> Nicolaus Kröger,<sup>14</sup> and Theo de Witte;<sup>4</sup> for the MDS subcommittee of the EBMT-CMWP

<sup>1</sup>Fondazione IRCCS Ca' Granda Ospedale Maggiore Policlinico and University of Milan, Italy; <sup>2</sup>University Medical Center, Leiden, the Netherlands; <sup>3</sup>Chronic Malignancy WP Registry, Leiden, the Netherlands; <sup>4</sup>Radboud University - Nijmegen Medical Centre, Nijmegen, the Netherlands; <sup>5</sup>University Hospital of Leuven, Belgium; <sup>6</sup>University Hospital, Department of Bone Marrow Transplantation, Essen, Germany; <sup>7</sup>Hospital Clinic, Barcelona, Spain; <sup>8</sup>Policlinico San Matteo, Pavia, Italy; <sup>9</sup>Helsinki University Central Hospital, Finland; <sup>10</sup>University Medical Centre Utrecht, the Netherlands; <sup>11</sup>Hospital de la Princesa, Madrid, Spain; <sup>12</sup>Hospital Santa Creu I Sant Pau, Barcelona, Spain; <sup>13</sup>Department of Medicine-Hematology, Oncology, Freiburg, Germany; and <sup>14</sup>University Hospital Eppendorf, Hamburg, Germany

---

©2014 Ferrata Storti Foundation. This is an open-access paper. doi:10.3324/haematol.2014.106880

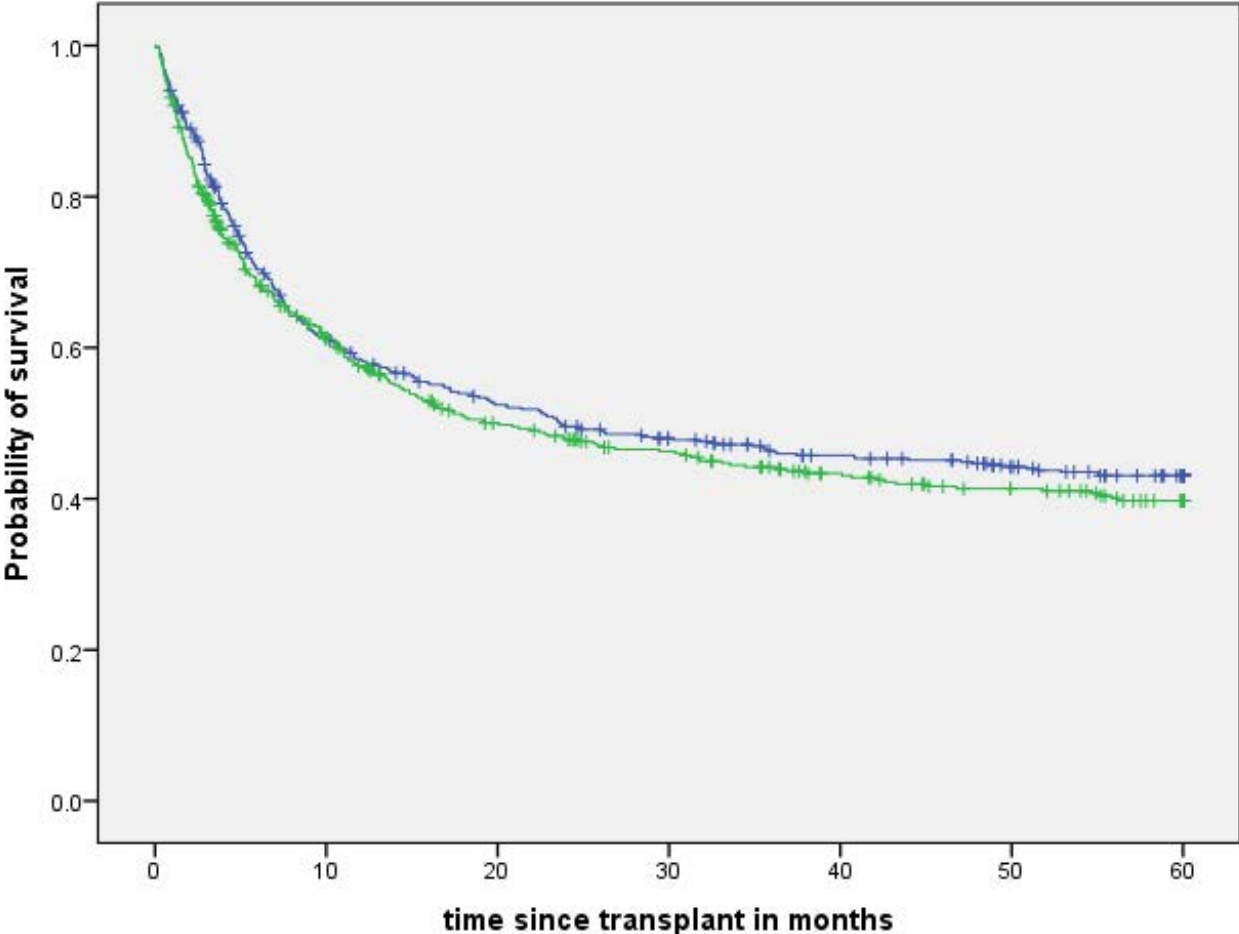
Manuscript received on March 5, 2014. Manuscript accepted on July 28, 2014.

Correspondence: francesco.onida@unimi.it

**Supplementary Table 3: cross-tabulation of the FAB classification and the disease status at transplant.**

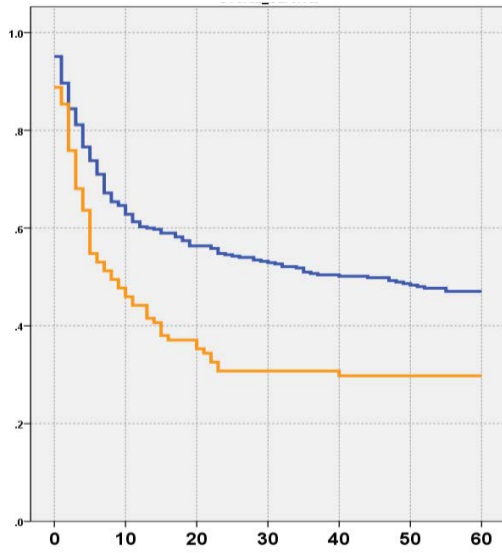
	Untreated	CR1	No CR1	Total
<b>RA/RARS</b>	104	6	30	<b>140</b>
<b>RAEB/CMML</b>	113	43	43	<b>199</b>
<b>RAEB-t</b>	50	77	57	<b>184</b>
<b>Total</b>	<b>267</b>	<b>126</b>	<b>130</b>	<b>523</b>

**Supplementary figure 1:** Overall survival of 555 patients with known IPSS cytogenetic risk score (blue line) versus 492 patients without reported cytogenetic risk score (green line)



**Supplementary figure 2:** Overall survival (A) and relapse-free survival (B) in the poor (116 patients, yellow line) versus the other two combined (407 patients, blue line) cytogenetic risk groups (“standard” group).

**A**



**B**

