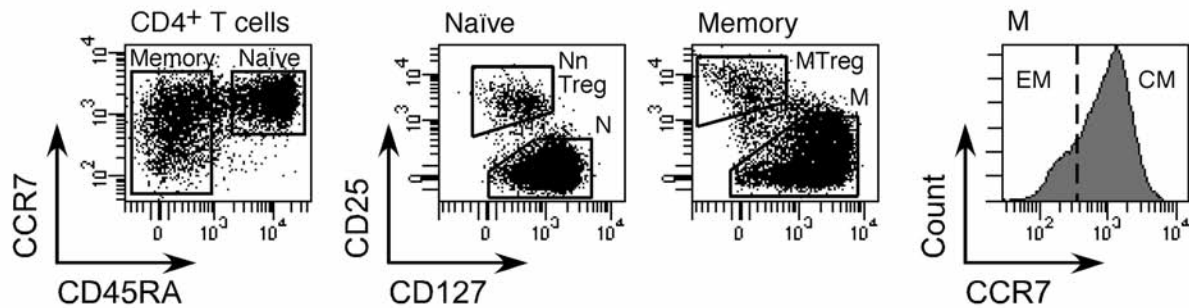


MHC class II/ESO tetramer-based generation of *in vitro* primed anti-tumor T-helper lines for adoptive cell therapy of cancer

Caroline Poli,¹ Caroline Raffin,¹ Danijel Dojcinovic,² Immanuel Luescher,² Maha Ayyoub,¹ and Danila Valmori^{1,3}

¹Institut National de la Santé et de la Recherche Médicale, Unité 1102, Institut de Cancérologie de l'Ouest, Nantes-Saint Herblain, France; ²Ludwig Center for Cancer Research, University of Lausanne, Epalinges, Switzerland, and ³L'UNAM Université, Faculty of Medicine, University of Nantes, Nantes, France

©2013 Ferrata Storti Foundation. This is an open-access paper. doi:10.3324/haematol.2012.071712



Online Supplementary Figure S1. *Ex vivo* sorting of CD4⁺ T-cell populations from healthy donors PBMC. CD4⁺ T cells, isolated from healthy donors PBMC by magnetic cell sorting, were stained with fluorochrome-labeled mAb specific for CD45RA, CCR7, CD25 and CD127 and separated by flow cytometry cell sorting, as indicated in each experiment, into one or more of the following populations: conventional naïve (N; CD45RA⁺CCR7⁺CD25⁻), conventional memory (M; CD45RA⁺CCR7⁺CD25⁺), memory Treg (MTreg; CD45RA⁺CCR7⁺CD25⁺CD127^{low}) and natural naïve Treg (NnTreg; CD45RA⁺CCR7⁺CD25⁺CD127^{low}) populations. In some experiments, conventional memory cells (M) were sorted into central memory (CM; CD45RA⁺CCR7⁺CD25⁺) and effector memory (EM; CD45RA⁺CCR7⁺CD25⁺) populations.