

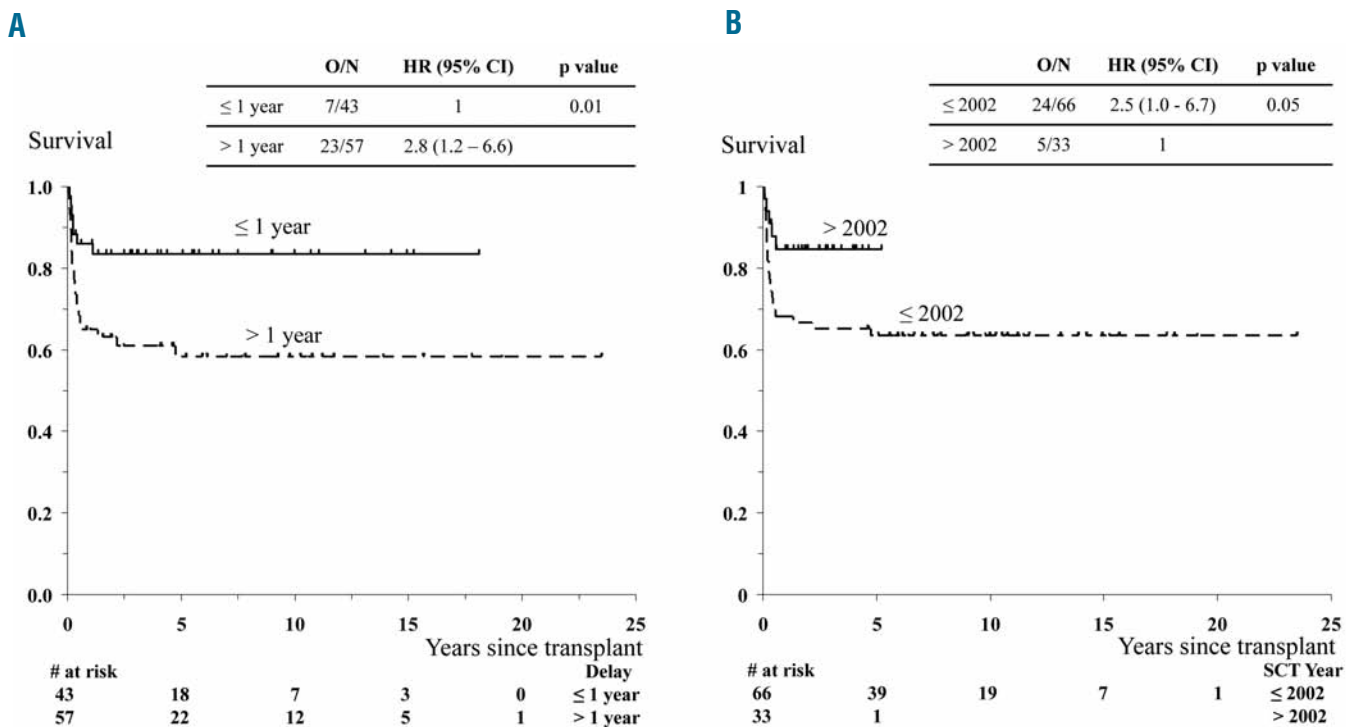
## Allogeneic stem cell transplantation in paroxysmal nocturnal hemoglobinuria

Régis Peffault de Latour,<sup>1</sup> Hubert Schrezenmeier,<sup>2</sup> Andrea Bacigalupo,<sup>3</sup> Didier Blaise,<sup>4</sup> Carmino A. de Souza,<sup>5</sup> Stephane Vigouroux,<sup>6</sup> Roelf Willemze,<sup>7</sup> Louis Terriou,<sup>8</sup> Andre Tichelli,<sup>9</sup> Mohamad Mohty,<sup>10</sup> Sophie de Guibert,<sup>11</sup> Judith C. Marsh,<sup>12</sup> Jakob Passweg,<sup>13</sup> Jean Yves Mary,<sup>14\*</sup> and Gerard Socié<sup>1,15\*</sup>

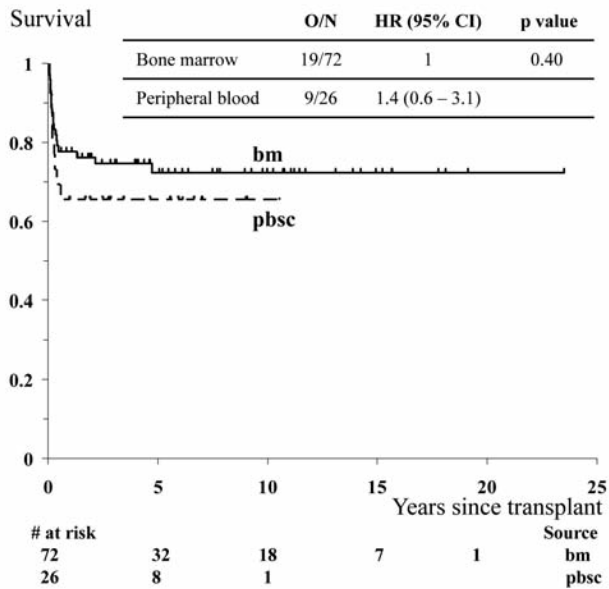
<sup>1</sup>Service d'Hématologie Greffe, Hôpital Saint Louis, Paris, France; <sup>2</sup>Institute of Transfusion Medicine, University of Ulm, Germany; <sup>3</sup>Ospedale San Martino, Department of Haematology II, Genova, Italy; <sup>4</sup>Unité de Transplantation et de Thérapie Cellulaire, Institut Paoli Calmettes, Marseille, France; <sup>5</sup>Univ. Est. de Campinas/TMO/UNICAMP, Campinas, Brazil; <sup>6</sup>S Vigouroux Service d'Hématologie Clinique, Groupe Hospitalier Sud, Pessac, France; <sup>7</sup>Leiden University Medical Center, Leiden, The Netherlands; <sup>8</sup>Service des Maladies du Sang, Hôpital Claude Huriez, Lille, France; <sup>9</sup>University Hospital Hematology Petersgraben, Basel, Switzerland; <sup>10</sup>Service d'Hématologie Clinique, Nantes, France; <sup>11</sup>Service d'Hématologie Clinique, Centre Hospitalier Pontchaillou, Rennes, France; <sup>12</sup>King's College Hospital, Hospital NHS Trust, London, UK; <sup>13</sup>Hopitaux Universitaires de Geneve, Département de Médecine Interne, Geneva, Switzerland; <sup>14</sup>Unité INSERM 717 – Université Paris 7 Denis Diderot, Paris, France; and <sup>15</sup>INSERM 728 – Université Paris 7 Denis Diderot, Paris, France

On behalf of the Severe Aplastic Anemia Working Party (SAA WP) of the European Group for Blood and Marrow Transplantation (EBMT) and the French Society of Hematology (SFH)

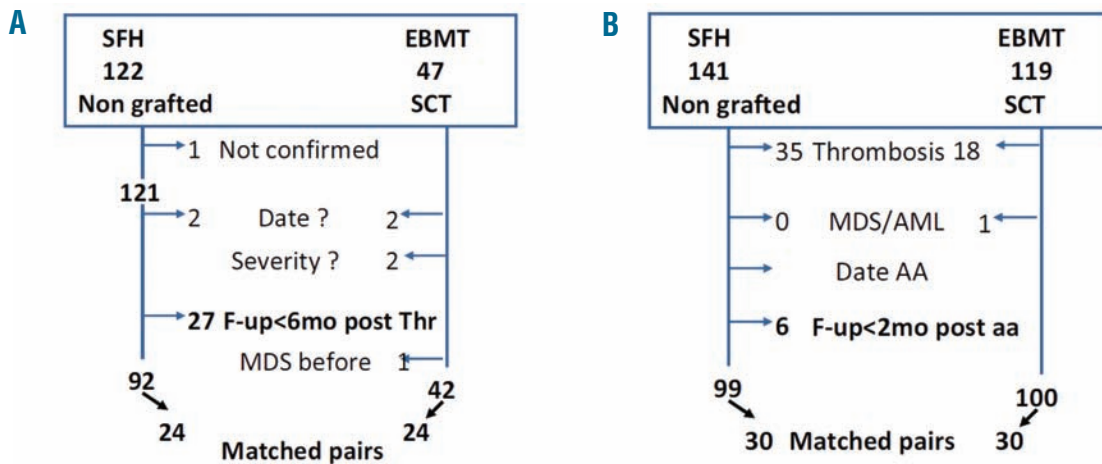
Citation: Peffault de Latour R, Schrezenmeier H, Bacigalupo A, Blaise D, de Souza CA, Vigouroux S, Willemze R, Terriou L, Tichelli A, Mohty M, de Guibert S, Marsh JC, Passweg J, Yves Mary J, and Socié G. Allogeneic stem cell transplantation in paroxysmal nocturnal hemoglobinuria. *Haematologica* 2012;97(11):1666-1673. doi:10.3324/haematol.2012.062828



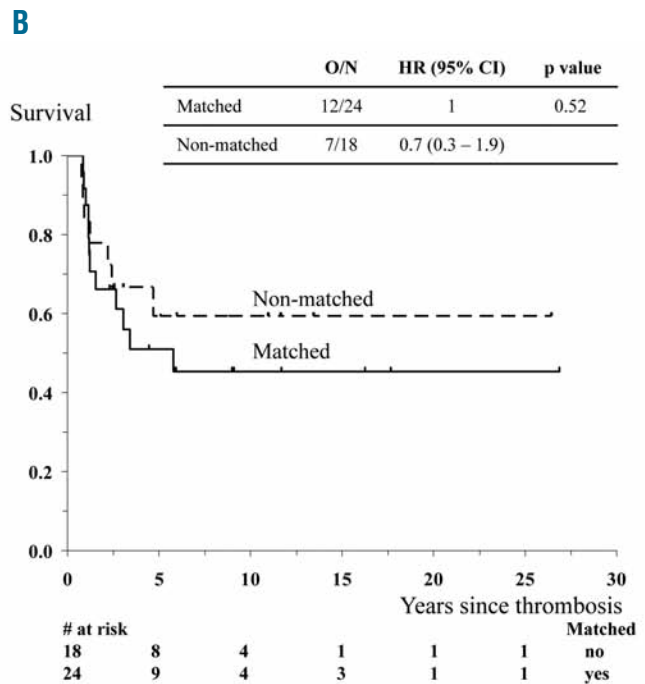
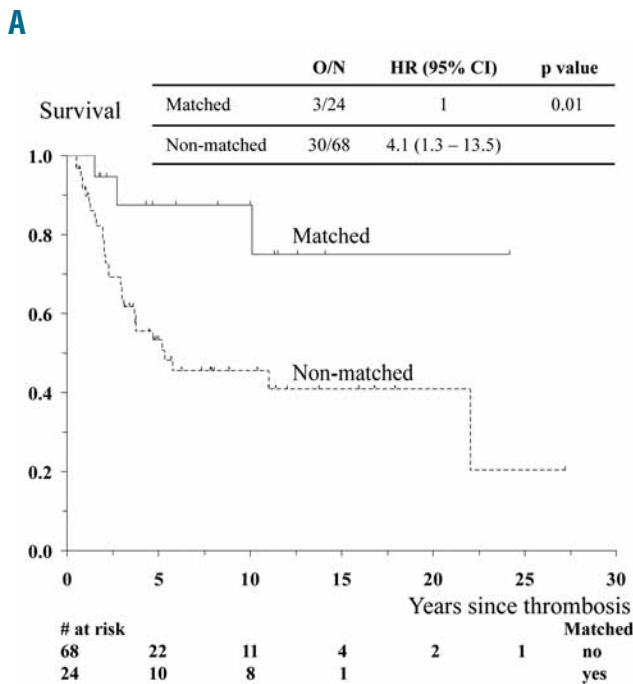
Online Supplementary Figure S1. Survival in patients transplanted because of severe aplastic anemia according to the time interval between diagnosis of PNH and stem cell transplantation (A) and according to the period of transplantation (up to and including 2002, after 2002) (B). (A) The continuous line indicates overall survival for patients who were transplanted with a time interval between AA diagnosis and transplantation of ≤ 1 year. The dotted line indicates patients transplanted more than 1 year after the diagnosis of AA. (B) The continuous line indicates overall survival for patients who were transplanted up to and including 2002, while the dotted line indicates patients who were transplanted after 2002. O/N: number of deaths/number of subjects, HR: hazard ratio, CI: confidence interval.



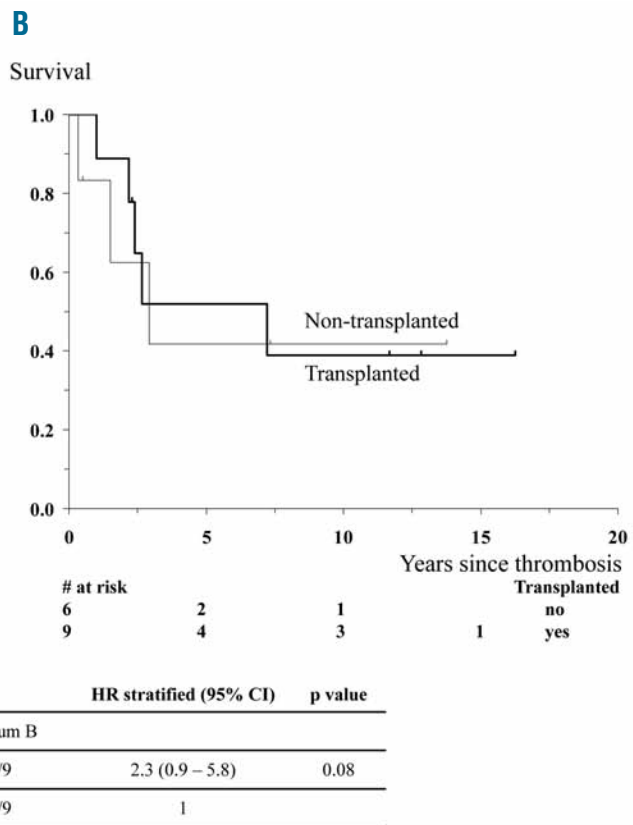
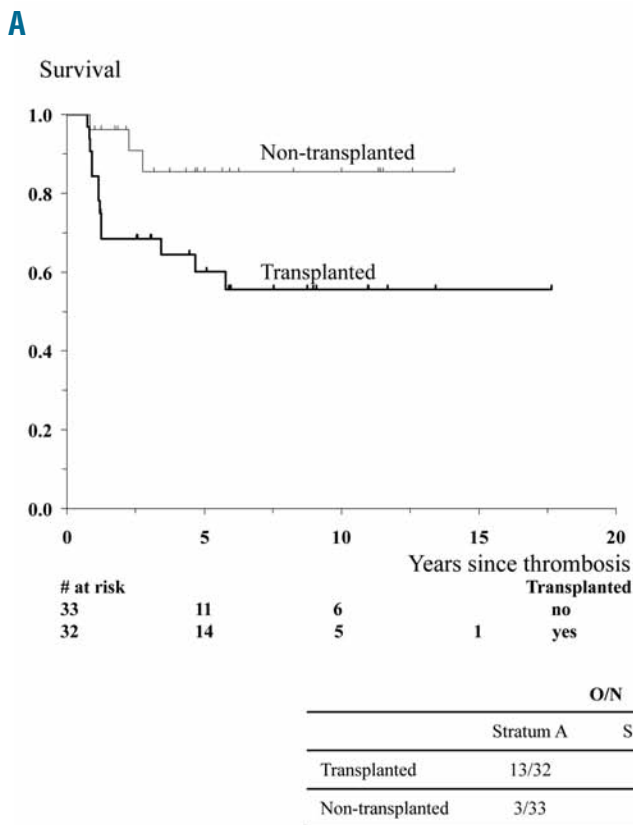
Online Supplementary Figure S2. Survival in patients transplanted because of severe aplastic anemia according to the stem cell source. The continuous line indicates overall survival for patients who were transplanted with bone marrow (bm) as the source of stem cells and the dotted line indicates patients who were transplanted with peripheral blood (pbsc). O/N: number of deaths/number of subjects, HR: hazard ratio, CI: confidence interval.



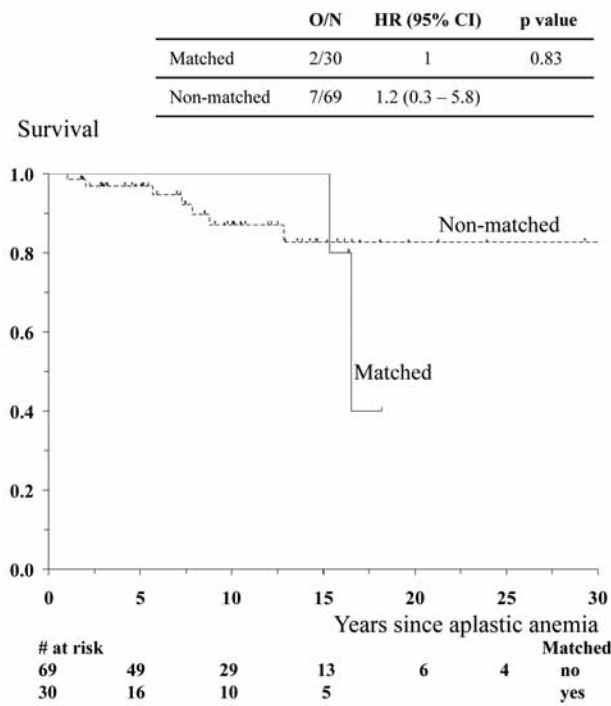
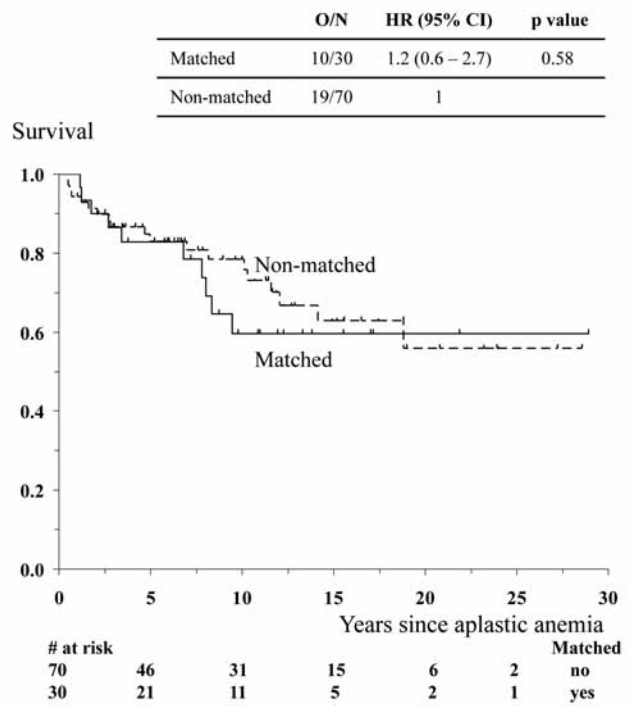
Online Supplementary Figure S3. Reasons for exclusion from the matched-pair analysis are detailed for thromboembolism in panel (A) and for aplastic anemia without thromboembolism in panel (B).



Online Supplementary Figure S4. Survival analysis in matched and non-matched patients in the case of thrombotic events in both non-transplanted (A) and transplanted (B) patients. The continuous line indicates overall survival for patients included in the matching process while the dotted line indicates patients who were not selected for the matching analysis. O/N: number of deaths/number of subjects, HR: hazard ratio, CI: confidence interval



Online Supplementary Figure S5. Global matching: survival analysis stratified on prognostic strata. Strata A (age <30 years and delay  $\geq 3$  months, or delay < 3 months) is shown in panel (A) and strata B (age  $\geq 30$  years and delay  $\geq 3$  months) is depicted in panel (B). The thin line indicates non-grafted patients while the bold line represents grafted patients. O/N: number of deaths/number of subjects, HR: hazard ratio, CI: confidence interval.

**A****B**

Online Supplementary Figure S6. Survival analysis in matched (continuous line) and non-matched (dotted line) patients in the case of aplastic anemia in both non-transplanted (A) and transplanted (B) patients. O/N: number of deaths/number of subjects, HR: hazard ratio, CI: confidence interval

Online Supplementary Table S1. Causes of death (n=64).

Causes	n
Infections	35
Bacterial	9
Fungal	9
Viral	6
Unknown	2
Graft-versus-host disease	18
Hemorrhage	12
Multiorgan failure	7
Other*	8

\*Toxicity for five patients, one rejection, one lymphoproliferative disorder and one case of renal failure.

**Online Supplementary Appendix.** The investigators listed below provided data on non-transplanted patients with PNH (French Society of Hematology)

*S. Bolognat, Hôpital Brabois Adulte, Nancy*  
*C. Brumpt, Hôpital Beaujon, Paris*  
*S. de Guibert, Centre Hospitalier Pontchaillou, Rennes*  
*D Blaise, Institut Paoli Calmettes, Marseille*  
*R. Delarue, Hôpital Necker, Paris*  
*N. Denizon, Centre Hospitalier, Montluçon*  
*J. Dugay, Centre Hospitalier, Le Mans*  
*P. Coppo, Hôpital Saint Antoine, Paris*  
*E. Deconinck, Centre Hospitalier, Besançon*  
*G. Etienne, Groupe Hospitalier Sud, Pessac*  
*J.R. Eveillard, Hôpital Augustin Morvan, Brest*  
*J.G. Fuzibet, Hôpital Archet, Nice*  
*S. Girault, Hôpital Dupuytren, Limoges*  
*F. Girodon, Centre Hospitalier, Dijon*  
*B. Gruson, Centre Hospitalier, Amiens*  
*F. Jardin, Centre Henri Becquerel, Rouen*  
*E. Jourdan, Centre Hospitalier, Nîmes*  
*B. Lioure, Centre Hospitalier, Strasbourg*  
*C. Makowski, Hôpital Michallon, Grenoble*  
*A.S. Michallet, Hôpital Lyon Sud, Lyon*  
*S. Maury, Henri Mondor, Créteil*  
*M. Legarff, Hôpital Pitié Salpêtrière, Paris*  
*S. Lissandre, Centre Hospitalier, Tours*  
*H. Maisonneuve, Centre Hospitalier, La Roche sur Yon*  
*P. Moreau, Centre Hospitalier, Nantes*  
*Morel P, Centre Hospitalier, Lens*  
*P. Quittet, Centre Hospitalier, Montpellier*  
*V. Raggeneau, Hôpital Pitié Salpêtrière, Paris*  
*C. Recher, Hôpital Purpan, Toulouse*  
*G. Reda, Centre Hospitalier, Nîmes*  
*O. Reman, Hôpital Georges Clémenceau, Caen*  
*M. Renaud, Hôpital de la Milétrie, Poitiers*  
*S. Roth, Hôpital Archet, Nice*  
*M. Roussel, Hôpital Lariboisière, Paris*  
*L. Roy, Hôpital de la Milétrie, Poitiers*  
*J. Ruer, Centre Hospitalier, Martigues*  
*C. Salanoubat, Hôtel Dieu, Paris*  
*G. Salles, Hôpital Lyon Sud, Lyon*  
*A. Salomon, Hôpital Brabois Adulte, Nancy*  
*A.L. Schmidt, Centre Hospitalier, Angers*  
*R. Tabrizi, Groupe Hospitalier Sud, Pessac*  
*E. Tavernier, Hôpital E. Herriot, Lyon*  
*L. Terriou, Hôpital Claude Huriez, Lille*  
*O. Tournilhac, Hôtel Dieu, Clermont Ferrand, O. Wagner Ballon, Henri Mondor, Créteil*

**The investigators listed below provided data on transplanted patients with PNH (European group for Blood and Marrow Transplantation)**

*703 Alger Centre Pierre et Marie Curie R. Hamladji*  
*397 Riyadh King Faisal Specialist Hospital & Research Centre M. Aljurf*  
*207 Paris Hopital St. Louis G. Sociè*  
*539 London St. George`s Hospital M.Koh*  
*230 Marseille Inst Paoli Calmette D Blaise*  
*374 Campinas Cidade Universitaria `Zeferino Vaz` C.De Souza*  
*217 Genova S.Martino A Bacigalupo*

627 Kayseri Erciyes Medical School U.Unal  
203 Leiden BMT Centre Leiden JHF Falkenburg  
206 Copenhagen Rigshospitalet H.Sengeloev  
617 Ankara Ankara University Faculty of Medicine G.Gurman  
238 Córdoba Hosp. Reina Sofia A.Torres Gomez  
169 Ankara Gazi Universitesi Tip Fakültesi Hastanesi G.Sucak  
291 Porto Inst. Portugues de Oncologia do Porto A. Campos  
614 Hamburg University Hospital Eppendorf N.Kröger  
656 Prague Institute of Hematology and Blood Transfusion A.Vitek  
237 Nijmegen Radboud University - Nijmegen Medical Centre A.Schattenberg  
671 Lyon Hopital E. Herriot M.Michallet  
246 Rotterdam Erasmus MC-Daniel den Hoed Cancer Centre JJ Cornelissen  
257 Dublin St. James's Hospital P.Browne  
663 Valencia Hospital Universitario La Fe M. Sanz  
235 Oslo Rikshospitalet L.Brinch  
259 Essen University Hospital D.Beelen  
267 Pessac Haut-leveque N.Milpied  
234 Brussels Cliniques Universitaires St. Luc X.Poireé  
295 Hannover Hannover Medical School A. Ganser  
710 Perth RP Group Royal Perth Hospital P.Cannell  
769 Sevilla Servicio Andaluz de Salud I.Espigado  
786 Mainz UMC of the Johannes Gutenberg University W.Herr  
204 Ulm Klinik fuer Innere Medizin III D. Bunjes  
232 Roma Univ. `La Sapienza` R.Foa  
242 Santander Iriondo Atienza A. Iriondo Atienza  
273 Clermont-Ferrand Service D'Haematologie Clinique Adulte et Pédiatrie J. Bay  
223 Tuebingen Univ Tuebingen L.Kanz  
253 Nantes CHU Nantes M.Mohty  
389 Leipzig University Hospital Leipzig D.Niederwieser  
556 Budapest St. Laszlo Hospital of Budapest T. Masszi  
672 Strasbourg CHR-CHU-Hopital de Hautepierre  
806 Lyon IHOP Y. Bertrand  
824 Budapest St. Laszlo Hospital G.Krivjn  
202 Basel University Hospital J.Passweg  
212 Stockholm Huddinge University Hospital P. Ljungman  
262 Paris Groupe Hospitalier J.P. Vernant  
265 Milano Ospedale Maggiore di Milano A.Cortelezzi  
515 Helsinki Helsinki University Central Hospital L. Volin  
754 Tel-Hashomer Chaim Sheba Medical Center A.Nagler  
808 Dresden Universitaetsklinikum Carl Gustav Carus M.Suttorp  
810 Freiburg University of Freiburg J. Finke  
233 Besancon Hopital Jean Minjot E. Deconinck  
254 Leeds St James's Institute of Oncology M. Gilleece  
270 Grenoble Hopital A. Michallon J.Y. Cahn  
287 Roma Ospedale S. Camillo I. Majolino  
311 Wiesbaden Deutsche Klinik fuer Diagnostik M. Schwerdtfeger  
816 Warsaw Military Institute of Health Services BMT Unit P.Rzepecki  
252 Creteil H Henri Mondor C. Cordonnier  
303 Cardiff University of Wales K. M O Wilson  
506 Brugge A.Z. Sint-Jan D. Selleslag  
628 Izmir Ege University Medical School S. Cagirgan  
630 Brussels Universitair Ziekenhuis Brussel R. Schots  
145 Stuttgart Robert-Bosch-Krankenhaus S. Martin  
243 London Great Ormond Street Hospital P. Veys  
248 Pescara Ospedale Civile P. Di Bartolomeo  
258 Jerusalem Hadassah University Hospital R.Or

538 Wroclaw DCTK A. Lange  
565 Maastricht University Hospital Maastricht H. Schouten  
566 Cambridge Addenbrookes Hospital C. Crawley  
707 Glasgow Royal Hospital for Sick Children B. Gibson  
713 Leicester NHS Trust A.E. Hunter  
718 Pilsen Charles University Hospital V. Koza  
756 Roma Tor Vergata W. Arcese  
766 Napoli Federico II G. de Rosa  
778 Sheffield Royal Hallamshire Hospital J. Snowden  
209 Leuven University Hospital Gasthuisberg J. Maertens  
266 Uppsala University Hospital K. Carlson  
594 Linz Elisabethinen-Hospital O. Krieger  
624 Toulouse Hopital de Purpan M. Attal  
650 Angers CHRU N. Ifrah  
740 Linkaping University Hospital H. Karbach  
763 London GKT School of Medicine G.J. Mufti  
205 London Hammersmith Hospital J. Apperley  
224 London University College London Hospital K. Thomson K. Ward  
658 Bergamo Ospedali Riuniti di Bergamo A. Rambaldi  
952 Toulouse CHU de Purpan  
977 Limoges CHRU Limoges D. Bordessoule