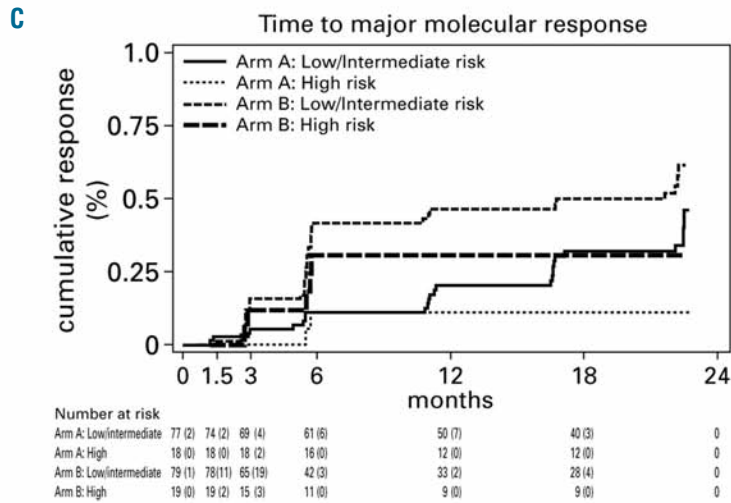
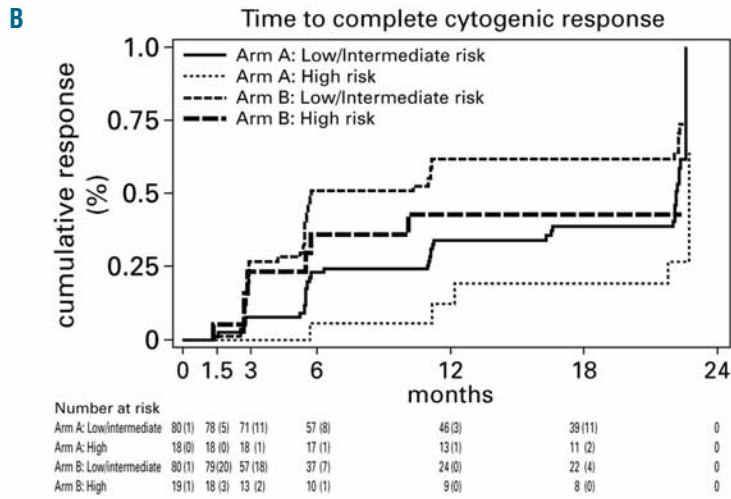
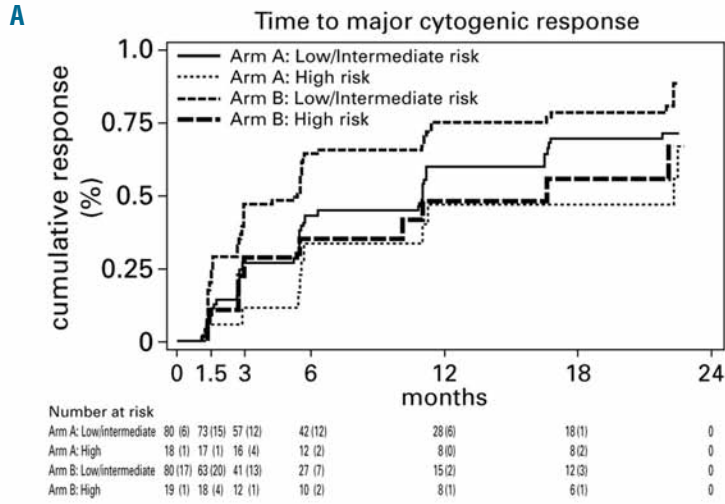


## High-dose imatinib induction followed by standard-dose maintenance in pre-treated chronic phase chronic myeloid leukemia patients – final analysis of a randomized, multicenter, phase III trial

Andreas L. Petzer,<sup>1,2</sup> Dominic Fong,<sup>1</sup> Thomas Lion,<sup>3</sup> Irina Dyagil,<sup>4</sup> Zvenyslava Masliak,<sup>5</sup> Andrija Bogdanovic,<sup>6</sup> Laimonas Griskevicius,<sup>7</sup> Sandra Lejniece,<sup>8</sup> Stefan Goranov,<sup>9</sup> Liana Gercheva,<sup>10</sup> Aleksandar Stojanovic,<sup>11</sup> Dontcho Peytchev,<sup>12</sup> Nikolay Tzvetkov,<sup>13</sup> Rasa Griniute,<sup>14</sup> Atanas Stanchev,<sup>15</sup> Thomas Grubinger,<sup>16</sup> Marthin Kwakkelstein,<sup>17</sup> Peter Schuld,<sup>18</sup> Guenther Gastl,<sup>1</sup> and Dominik Wolf<sup>1,19</sup>

<sup>1</sup>Central European Leukemia Study Group (CELSG), Internal Medicine V, Hematology and Oncology, Medical University Innsbruck, Innsbruck, Austria; <sup>2</sup>Internal Medicine I, Hematology and Medical Oncology; Krankenhaus Barmherzige Schwestern Linz, Linz, Austria; <sup>3</sup>CCRI Children's Cancer Research Institute/LabDia Labordiagnostik, Vienna, Austria; <sup>4</sup>Department of Hematology, RC Radiation Medicine, Kiev, Ukraine; <sup>5</sup>Institute of Blood Pathology and Transfusion Medicine, Lviv, Ukraine; <sup>6</sup>Clinical Center of Serbia, Institut za Haematologiju, Belgrad, Serbia and Montenegro; <sup>7</sup>Clinics of Internal, Family Medicine and Oncology, Medical Faculty, Vilnius University, Hospital Santariskiu Clinics, Vilnius, Lithuania; <sup>8</sup>National Center of Hematology, Riga, Latvia; <sup>9</sup>University Hospital for Active Treatment "St. George", Plovdiv, Bulgaria; <sup>10</sup>University Hospital for Active Treatment "St. Marina", Varna, Bulgaria; <sup>11</sup>Clinic for Hematology, National Clinical Center Skopje, Skopje, Macedonia; <sup>12</sup>National Center of Hematology and Transfusiology, Sofia, Bulgaria; <sup>13</sup>University Hospital for Active Treatment, Pleven, Bulgaria; <sup>14</sup>Kaunas University Hospital, Kaunas, Lithuania; <sup>15</sup>Alexandrovskia University Hospital, Sofia, Bulgaria; <sup>16</sup>Department of Medical Statistics, Informatics and Health Economics, Medical University Innsbruck; <sup>17</sup>Novartis, Basel, Switzerland; <sup>18</sup>Novartis, Nürnberg, Germany, and <sup>19</sup>University Hospital Bonn, Department of Hematology/Oncology, Bonn, Germany

*Citation: Petzer AL, Fong D, Lion T, Dyagil I, Masliak Z, Bogdanovic A, Griskevicius L, Lejniece S, Goranov S, Gercheva L, Stojanovic A, Peytchev D, Tzvetkov N, Griniute R, Stanchev A, Grubinger T, Kwakkelstein M, Schuld P, Gastl G, and Wolf D. High-dose imatinib induction followed by standard-dose maintenance in pre-treated chronic phase chronic myeloid leukemia patients – final analysis of a randomized, multicenter, phase III trial. Haematologica 2012;97(10):1562-1569. doi:10.3324/haematol.2011.060087*



Online Supplementary Figure S1. Cumulative cytogenetic response rates according to Sokal risk score. Patients were classified into either low/int or high Sokal risk and cumulative major cytogenetic response (A), complete cytogenetic response (B) and major molecular response (C) rates were calculated.