

Haploidentical allogeneic hematopoietic cell transplantation in adults using CD3/CD19 depletion and reduced intensity conditioning: a phase II study

Birgit Federmann,¹ Martin Bornhauser,² Christoph Meisner,³ Lambros Kordelas,⁴ Dietrich W. Beelen,⁴ Gernot Stuhler,⁵ Matthias Stelljes,⁶ Rainer Schwerdtfeger,⁷ Maximilian Christopeit,⁸ Gerhard Behre,^{8*} Christoph Faul,¹ Wichard Vogel,¹ Michael Schumm,⁹ Rupert Handgretinger,⁹ Lothar Kanz,¹ and Wolfgang A. Bethge¹

¹Medical Center, Department of Hematology & Oncology, University of Tuebingen; ²Medical Center, University of Dresden; ³Department of Medical Biometrics, University of Tuebingen; ⁴Department of Bone Marrow Transplantation, West German Cancer Centre, University Hospital Essen, University of Duisburg-Essen; ⁵Medical Center, University of Wuerzburg; ⁶Medical Center, University of Muenster; ⁷Medical Center, Deutsche Klinik für Diagnostik, Wiesbaden; ⁸Medical Center, University of Halle; and ⁹Children's Hospital, University of Tuebingen, Germany

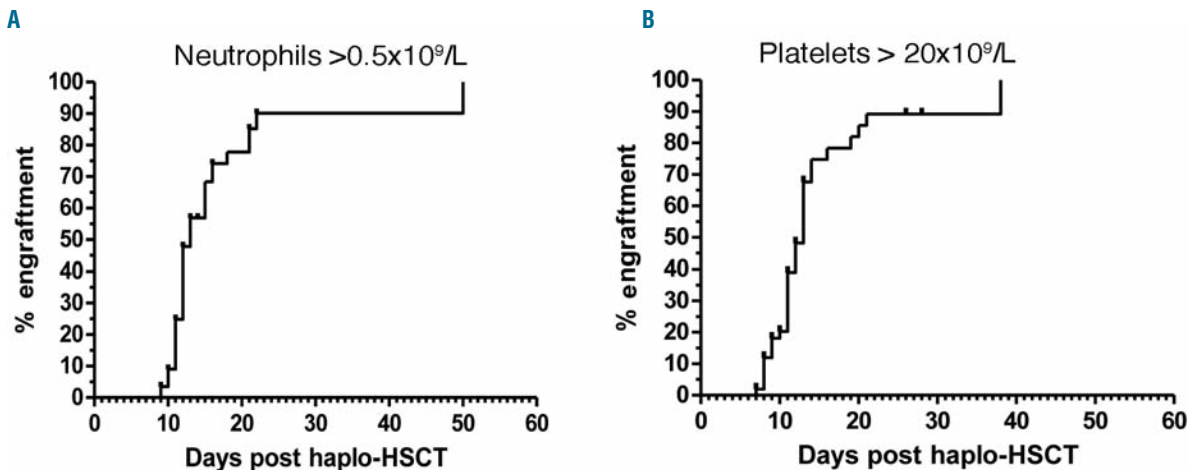
Citation: Federmann B, Bornhauser M, Meisner C, Kordelas L, Beelen DW, Stuhler G, Stelljes M, Schwerdtfeger R, Christopeit M, Behre G, Faul C, Vogel W, Schumm M, Handgretinger R, Kanz L, and Bethge WA. Haploidentical allogeneic hematopoietic cell transplantation in adults using CD3/CD19 depletion and reduced intensity conditioning: a phase II study. *Haematologica* 2012;97(10):1523-1531. doi:10.3324/haematol.2011.059378

Online Supplementary Table S1. Graft composition after CD3/CD19 depletion. Values were determined by flow cytometry pre and post each immunomagnetic selection/depletion procedure. Numbers present medians of all evaluable procedures. Detailed analysis of patients treated in Tuebingen (n=26).

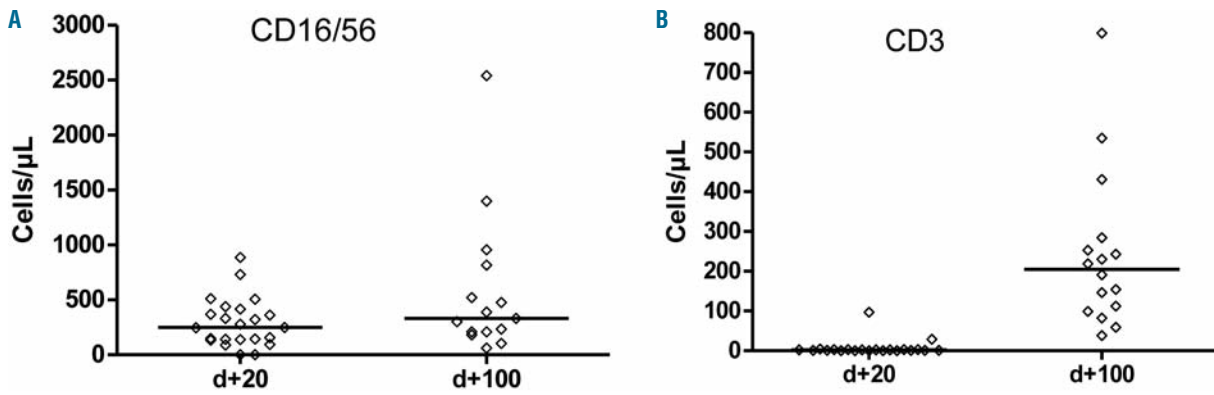
Graft characteristics (n=26)	Median (range)
NK cells/ kg BW x10 ⁷	2.9 (0.0-37.3)
CD3 ⁺ cells/ kg BW x10 ⁴	2.4 (0.56-44.0)
CD34 ⁺ cells/ kg BW x10 ⁶	8.6 (3.2-21.8)
CD19 ⁺ cells/ kg BW x10 ⁴ (n=24)	0.7 (0.1-5.8)
Monocytes/ kg BW x10 ⁶	47.4 (0.6-364.7)
Granulocytes/ kg BW x10 ⁶	105.5 (0.5-213.5)
Results of CD3/CD19 depletion	
Total cells pre depletion x10 ¹⁰	6.10 (2.25-10.55)
Post column : total cells x10 ¹⁰	1.23 (0.51-2.77)
CD3 ⁺ cells (%)	0.009 (0.0009-0.07)
T-cell depletion log	4.09 (3.23-4.81)
CD19 ⁺ cells (%)	0.003 (0.0004-0.01)
CD34 ⁺ cells (%)	1.48 (0.28-3.34)
CD34 recovery (%)	59.14 (33.43-87.99)

Online Supplementary Table S2. The distribution of infections related to the reconstitution of CD3⁺ T cells. Data of patients treated in Tuebingen: 8 of the patients died from infections, 7 patients are still alive.

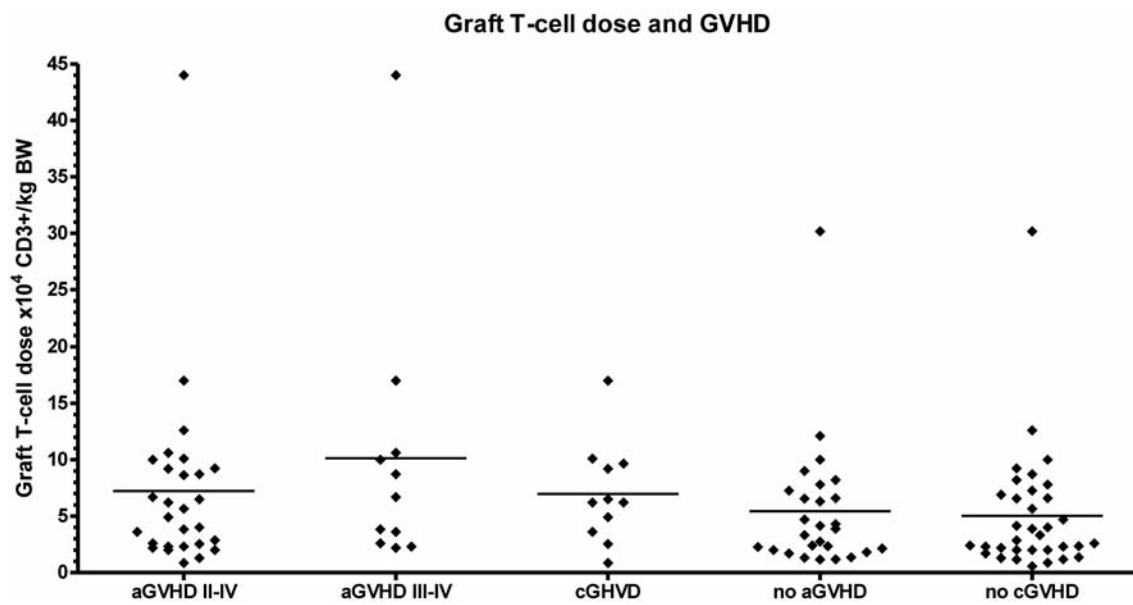
Cause of death	Death on Day+	CD3 ⁺ T cells Day +50	CD3 ⁺ T cells Day +100	CD3 ⁺ T cells Day +250
Pneumonia	83	0	-	-
Toxoplasmosis	178	148	112	-
CMV	100	2	535	-
PML	144	6	-	-
Pneumonia	375	361	191	283
IPS	68	0	-	-
Aspergillosis	268	14	154	358
Meningitis	595	73	71	26
Alive		434	431	407
Alive		10	111	200
Alive		65	284	723
Alive		3	452	607
Alive		54	146	195
Alive		522	252	211
Alive		5	59	899



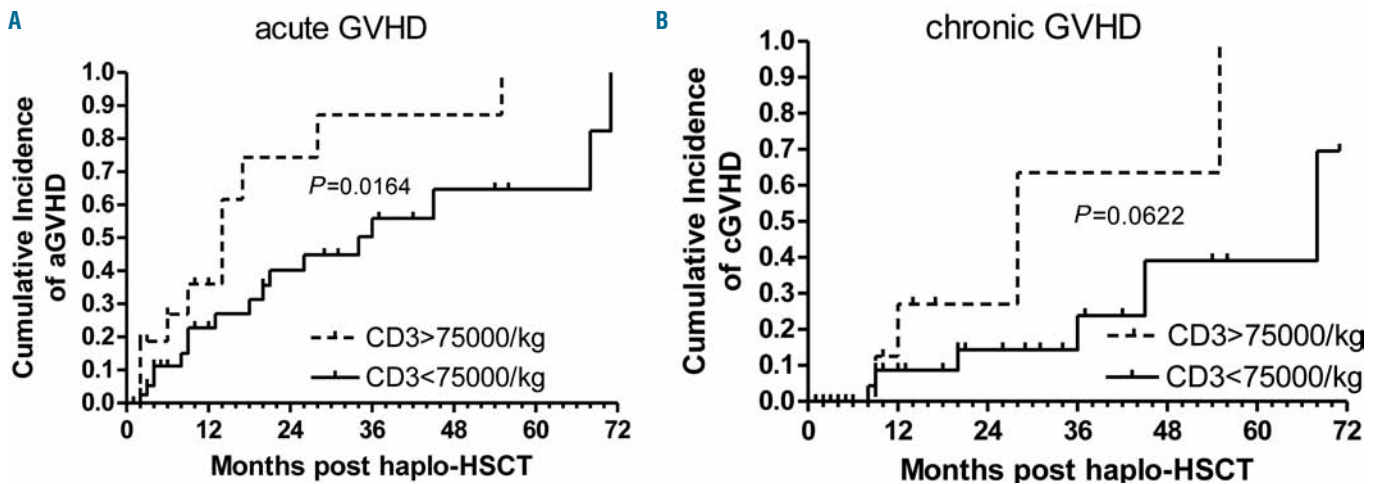
Online Supplementary Figure S1. Time to recovery of neutrophils and platelets. Percentage of patients engrafted by time from the day of transplantation in a cumulative curve. (A) Neutrophils > 0.5x10⁹/L. (B) Platelets > 20x10⁹/L.



Online Supplementary Figure S2. Immune reconstitution after haplo-HSCT. Absolute count on Days +50 and +100 in 21 evaluable patients on Days +50 and +100 (± 20 days) after HCT. (A) CD16/56⁺ NK cells. (B) CD3⁺ T cells.



Online Supplementary Figure S3. GVHD in relation to graft T-cell dose. Scatter plot of acute and chronic GVHD in relation to the count of CD3⁺ T cells in the graft.



Online Supplementary Figure S4. Proportion of GVHD according to CD3 content. Log rank test between two groups, Cut off 75,000 CD3⁺ cells/kg. (A) acute GVHD. (B) chronic GVHD.