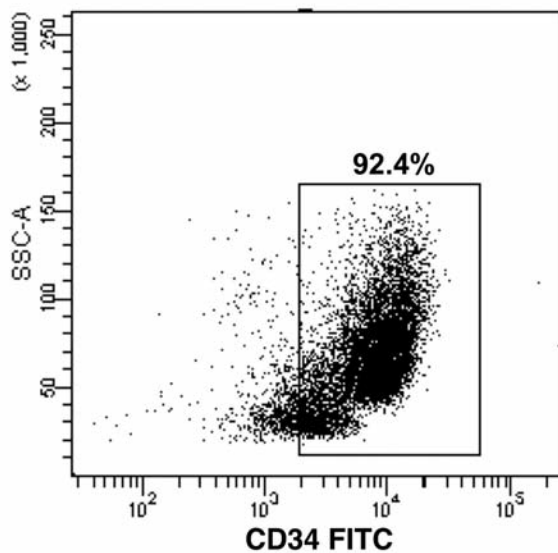


Marked upregulation of Survivin and Aurora-B kinase is associated with disease progression in the myelodysplastic syndromes

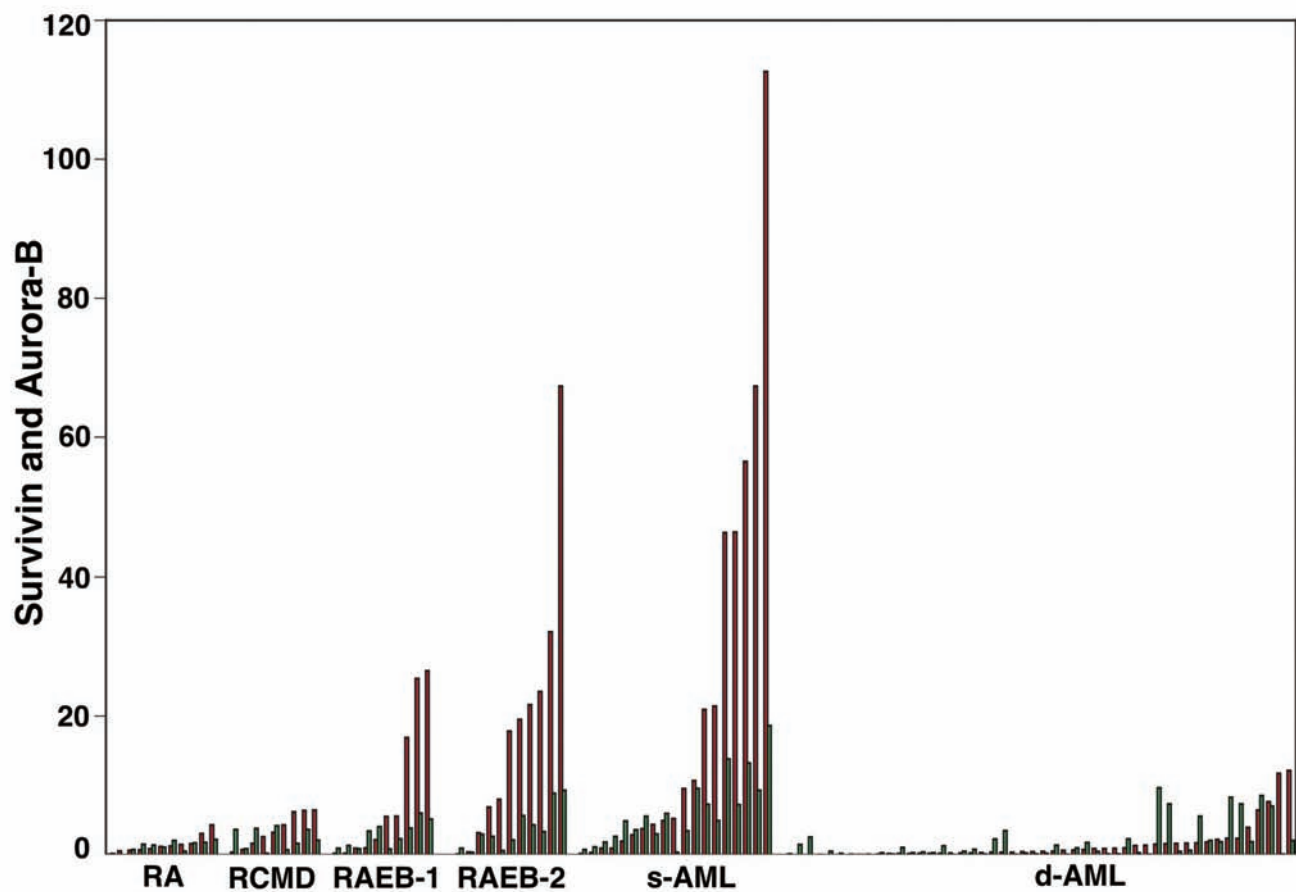
Akira Yoshida,^{1,2*} Kouichi Zokumasu,¹ Yuji Wano,³ Takahiro Yamauchi,¹ Shin Imamura,⁴ Kazutaka Takagi,¹ Shinji Kishi,¹ Yoshimasa Urasaki,¹ Kaoru Tohyama,⁵ and Takanori Ueda¹

¹Department of Hematology and Oncology, Faculty of Medicine; ²Translational Research Center, University of Fukui, Matsuoka, Eiheiji-Chou, Fukui; ³Department of Hematology, Iwate Prefectural Hospital, Morioka; ⁴Department of Hematology, Fukui Red Cross Hospital, Fukui; and ⁵Department of Laboratory Medicine, Kawasaki Medical School, Okayama, Japan

Citation: Yoshida A, Zokumasu K, Wano Y, Yamauchi T, Imamura S, Takagi K, Kishi S, Urasaki Y, Tohyama K, and Ueda T. Marked upregulation of Survivin and Aurora-B kinase is associated with disease progression in the myelodysplastic syndromes. *Haematologica* 2012;97(9):1372-1379. doi:10.3324/haematol.2011.055684



Online Supplementary Figure S1. Representative dot plot of flow cytometry for CD34 expression in the sample after magnetic separation. BM sample was obtained from a patient with MDS (RA). CD34⁺ cells were enriched using Mac beads column as described in the *Design and Methods* section.



Online Supplementary Figure S2. Comparison of Survivin and Aurora-B kinase expression in each patient with MDS, s-AML and *de novo* AML (d-AML). Red and green bar indicates Survivin and Aurora-B kinase expression, respectively. Survivin or Aurora-B kinase expression was evaluated by RQ-PCR as described in *Design and Methods* section. d-AML: *de novo* AML.