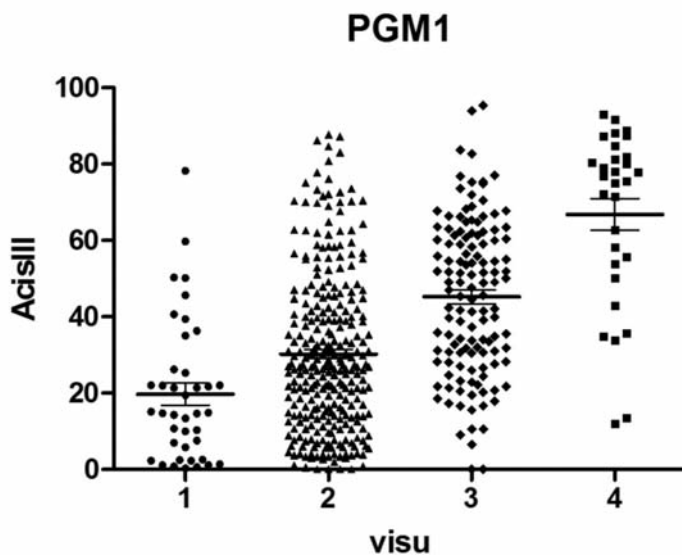


## Immunohistochemical markers for tumor associated macrophages and survival in advanced classical Hodgkin's lymphoma

Beatriz Sánchez-Espiridión,<sup>1,5</sup> Ana M. Martín-Moreno,<sup>1</sup> Carlos Montalbán,<sup>2</sup> L. Jeffrey Medeiros,<sup>3</sup> Francisco Vega,<sup>3</sup> Anas Younes,<sup>4</sup> Miguel A. Piris,<sup>5</sup> and Juan F. García<sup>1</sup>

<sup>1</sup>Department of Pathology, M.D. Anderson Cancer Center, Houston, TX, USA; <sup>2</sup>Department of Internal Medicine, Hospital Ramón y Cajal, Madrid Spain; <sup>3</sup>Department of Hematopathology, The University of Texas M. D. Anderson Cancer Center, Houston, TX, USA; <sup>4</sup>Department of Lymphoma/Myeloma, The University of Texas M. D. Anderson Cancer Center, Houston, TX, USA; and <sup>5</sup>Hospital Marques de Valdecilla, IFIMAV, Santander, Spain

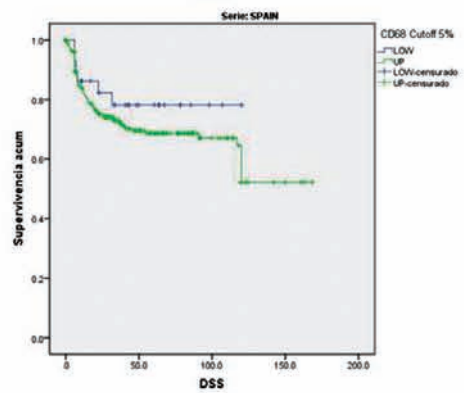
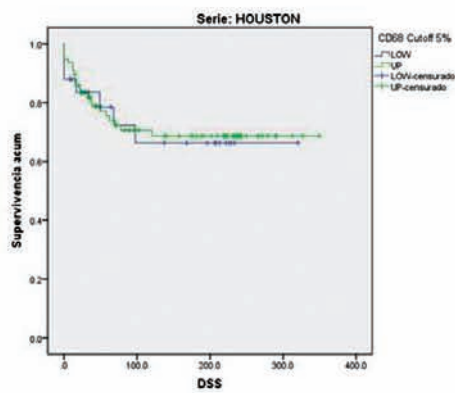
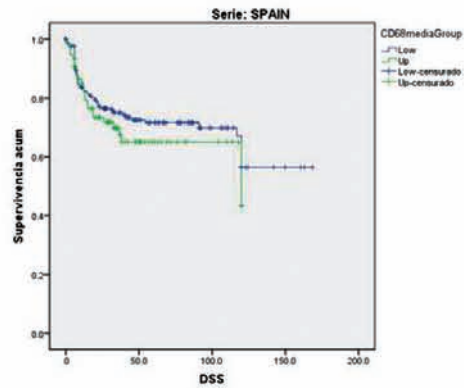
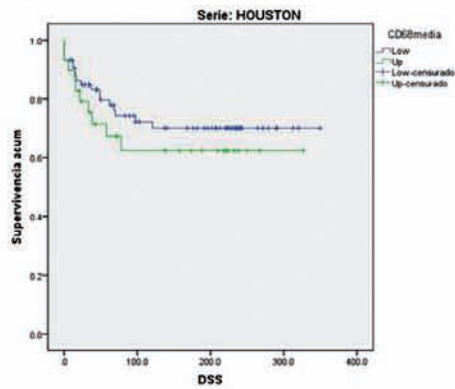
Citation: Sánchez-Espiridión B, Martín-Moreno AM, Montalbán C, Medeiros LJ, Vega F, Younes A, Piris MA, and García JF. Immunohistochemical markers for tumor associated macrophages and survival in advanced classical Hodgkin's lymphoma. *Haematologica* 2012;97(7):1080-1084. doi:10.3324/haematol.2011.055459



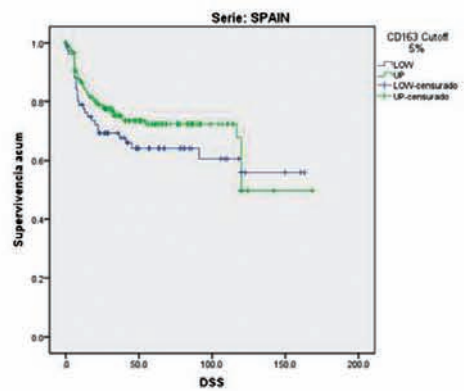
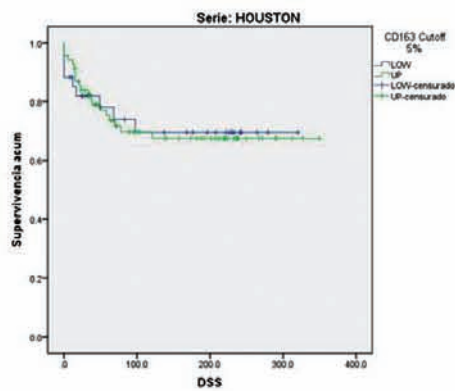
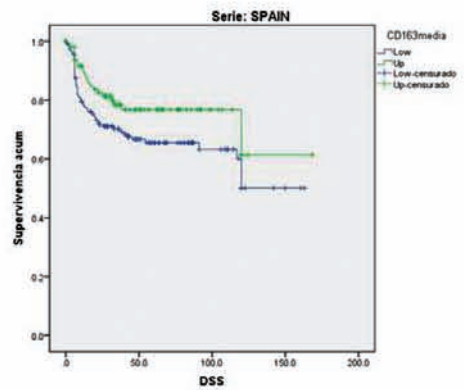
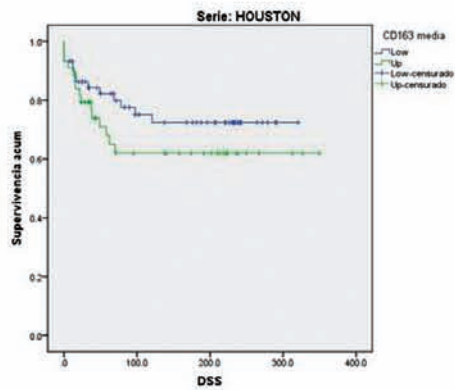
Online Supplementary Figure S1. Comparison between quantification of CD68 IHC-positivity (PGM1 clone) by an automated scanning system, versus "manual" scoring of an experienced hematopathologists. (Spearman's coefficient= 0.432;  $P < 0.001$ )

Online Supplementary Figure S2. Kaplan-Meier Plots for disease specific survival analyses (DSS) from the different immunohistochemical markers included in the study. Most survival analyses were not significant with the different cut-off points used. For graphical representation, only median and 5% cut-off points were selected. ns: not significant.

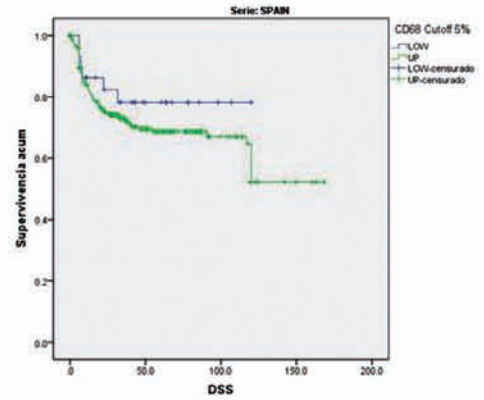
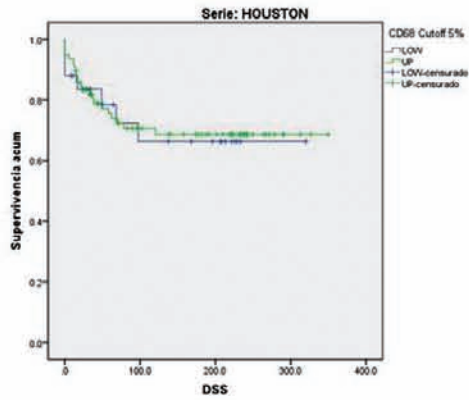
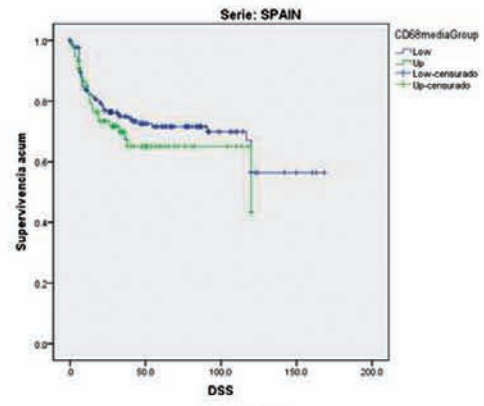
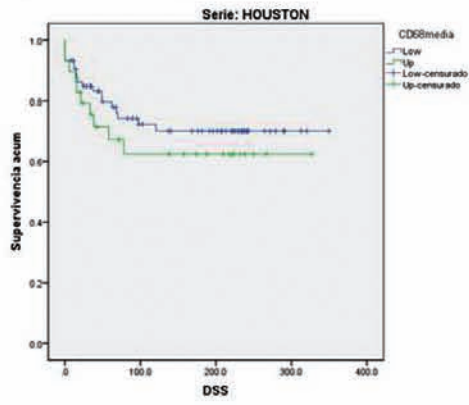
## CD68 (KP1 Clone)



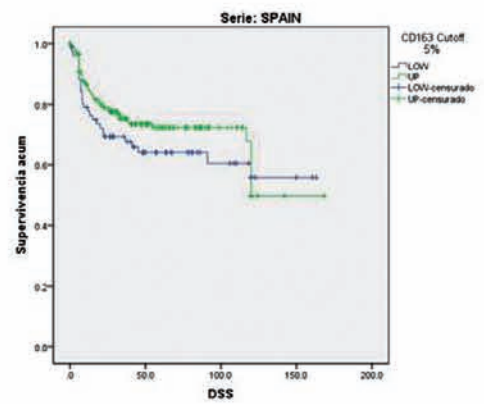
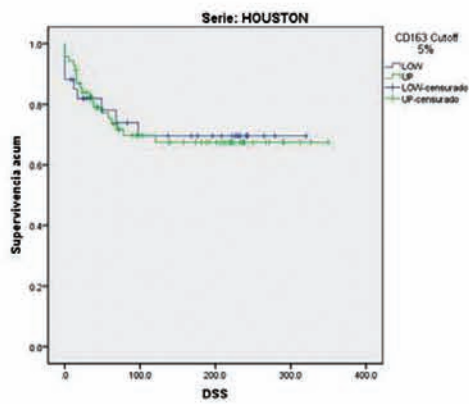
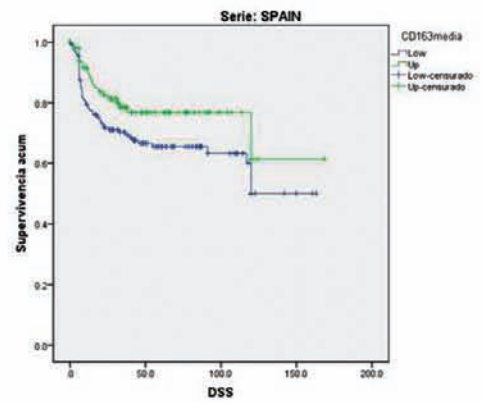
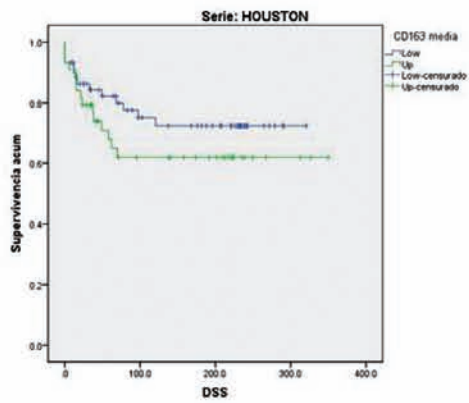
## CD163



# CD68 (KP1 Clone)

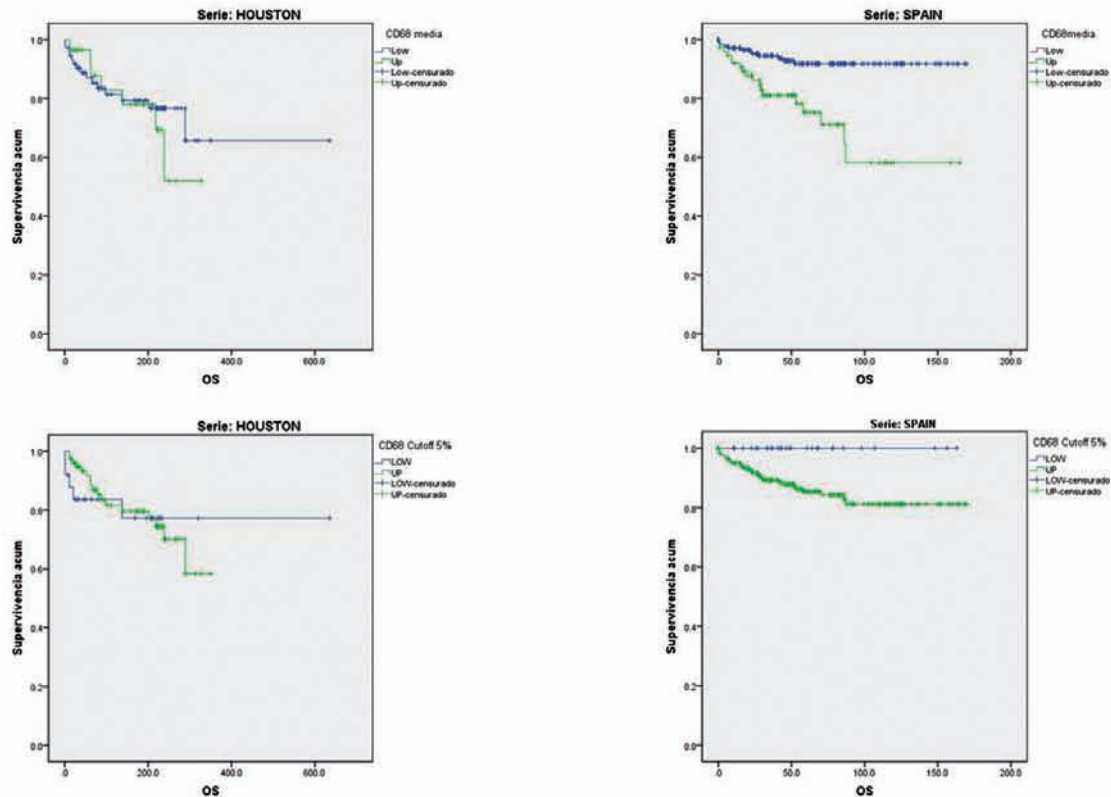


# CD163

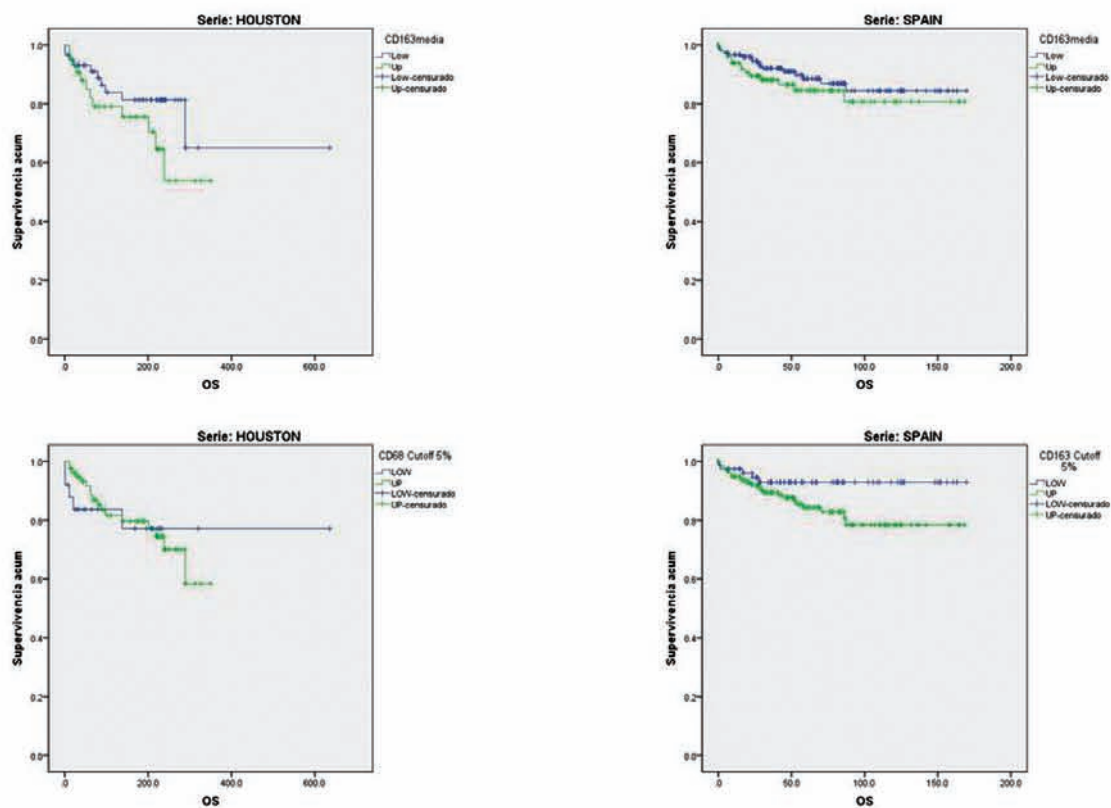


Online Supplementary Figure S3. Kaplan-Meier Plots for overall survival (OS) from the different immunohistochemical markers included in the study. Most survival analyses were not significant with the different cut-off points used. For graphical representation, only median and 5% cut-off points were selected.

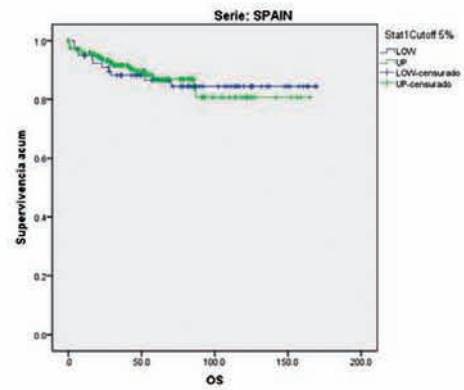
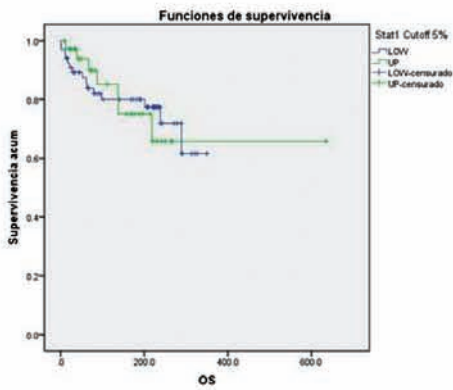
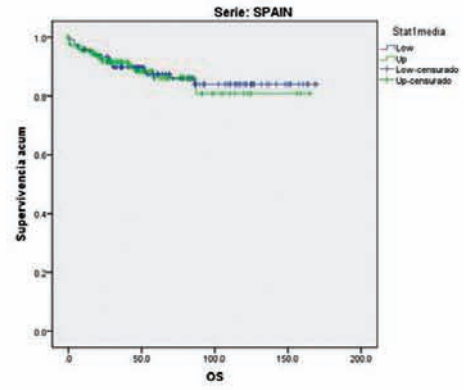
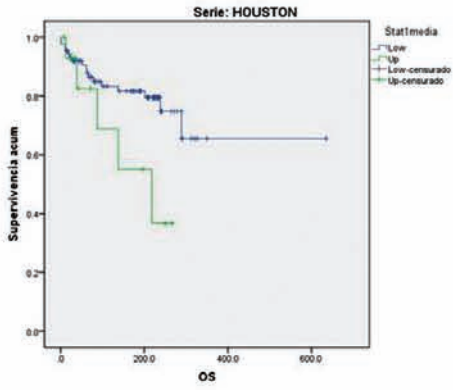
## CD68 (KP1 Clone)



## CD163



# STAT1



# LYZ

