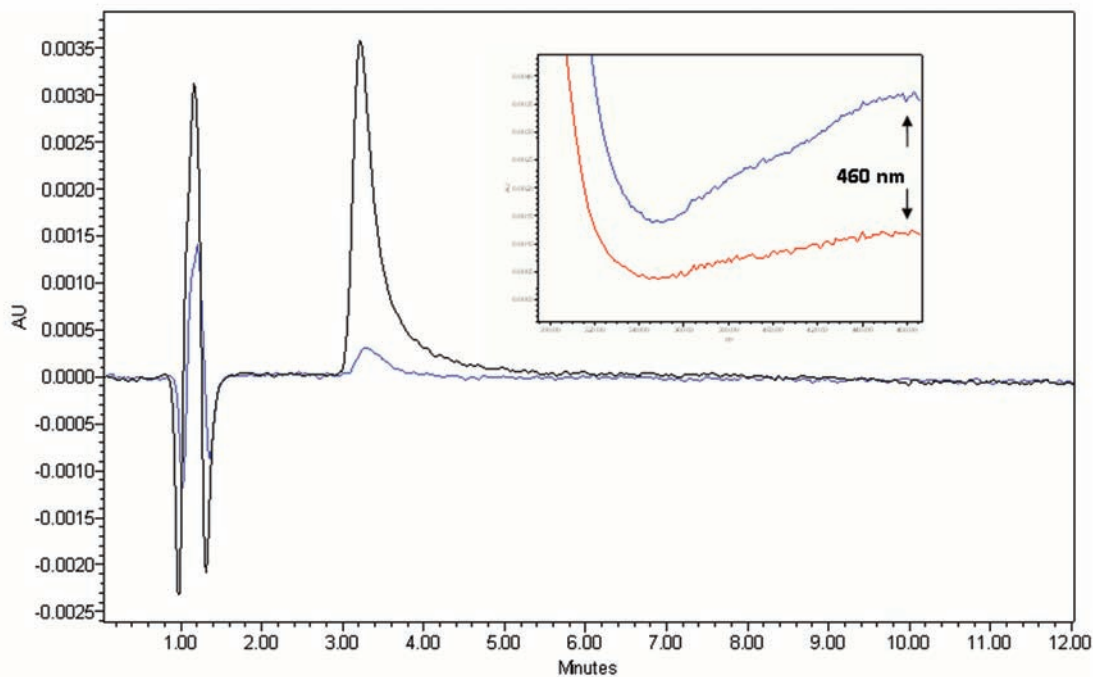


## Timed non-transferrin bound iron determinations probe the origin of chelatable iron pools during deferiprone regimens and predict chelation response

Yesim Aydinok,<sup>1</sup> Patricia Evans,<sup>2</sup> Chantal Y. Manz,<sup>3</sup> and John B. Porter,<sup>2</sup>

<sup>1</sup>Pediatric Hematology, Ege University Faculty of Medicine, Izmir, Turkey; <sup>2</sup>University College London, London, England; and <sup>3</sup>Lipomed AG, Arlesheim, Switzerland

Citation: Aydinok Y, Evans P, Manz CY, and Porter JB. Timed non-transferrin bound iron determinations probe the origin of chelatable iron pools during deferiprone regimens and predict chelation response. *Haematologica* 2012;97(6):835-841. doi:10.3324/haematol.2011.056317



Online Supplementary Figure S1. Co-elution of DFP-iron complex in a patient's serum with an authentic sample spiked into serum. Overlaid 460 nm-extracted chromatograms of a patient's sample containing 0.8  $\mu$ M DFP-iron complex and a serum sample spiked with authentic 10  $\mu$ M DFP-iron complex. The inset illustrates overlaid spectra from these samples showing the absorption maxima at 460 nm.