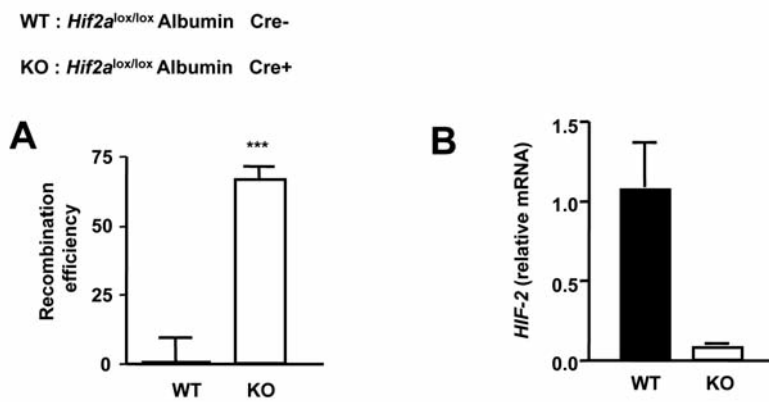


Hepatic hypoxia-inducible factor-2 down-regulates hepcidin expression in mice through an erythropoietin-mediated increase in erythropoiesis

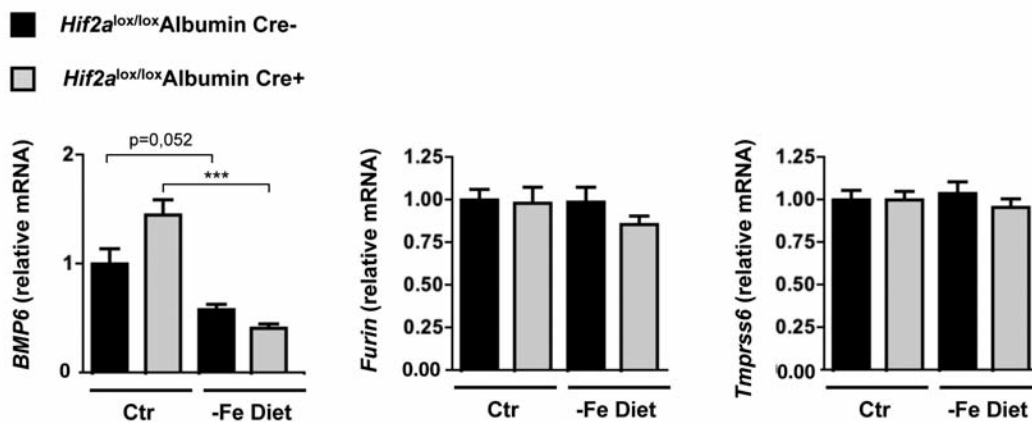
Maria Mastrogiannaki,^{1,2,3} Pavle Matak,^{1,2,3} Jacques R.R. Mathieu,^{1,2,3} Stéphanie Delga,^{1,2,3} Patrick Mayeux,^{1,2,3} Sophie Vaultont,^{1,2,3} and Carole Peyssonnaud^{1,2,3}

¹INSERM, U1016, Institut Cochin, Paris; ²CNRS, UMR8104, Paris; and ³Université Paris Descartes, Sorbonne Paris Cité, Paris, France

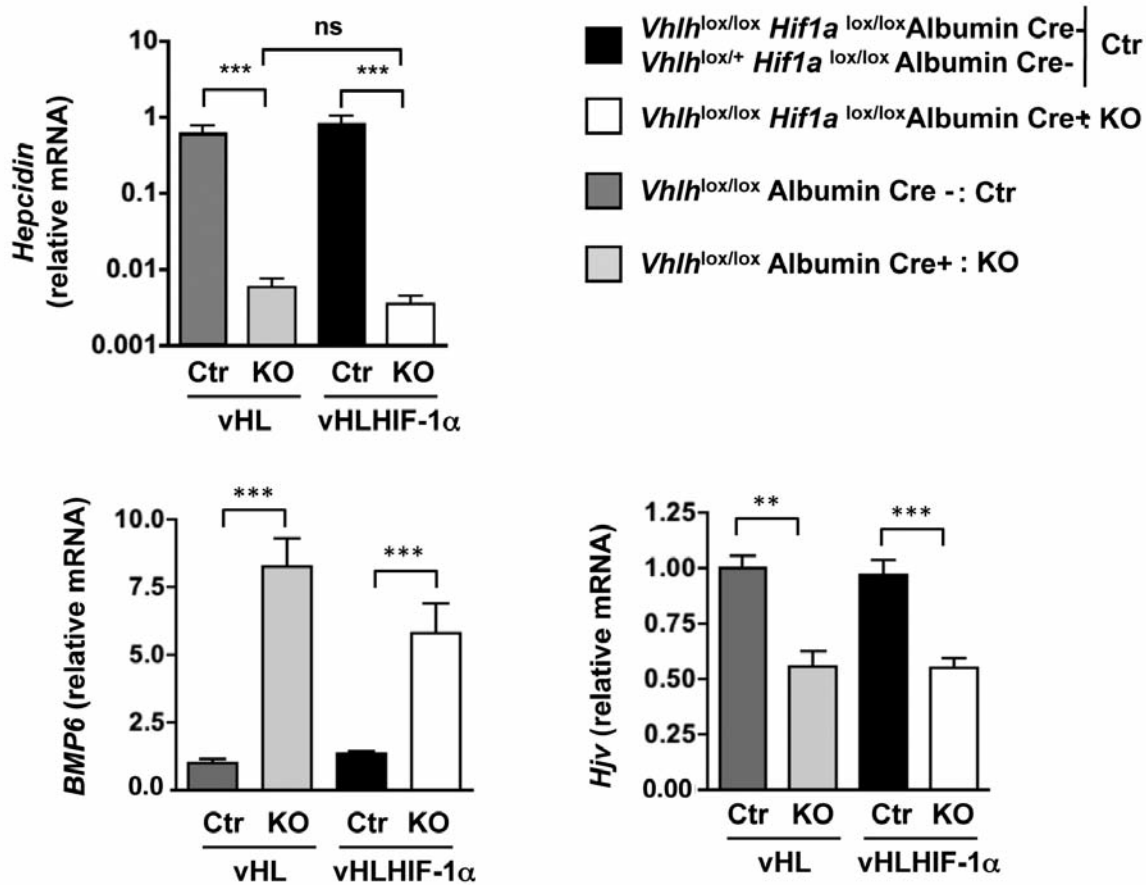
Citation: Mastrogiannaki M, Matak P, Mathieu JRR, Delga S, Mayeux P, Vaultont S, and Peyssonnaud C. Hepatic hypoxia-inducible factor-2 down-regulates hepcidin expression in mice through an erythropoietin-mediated increase in erythropoiesis. *Haematologica* 2012;97(6):827-834. doi:10.3324/haematol.2011.056119



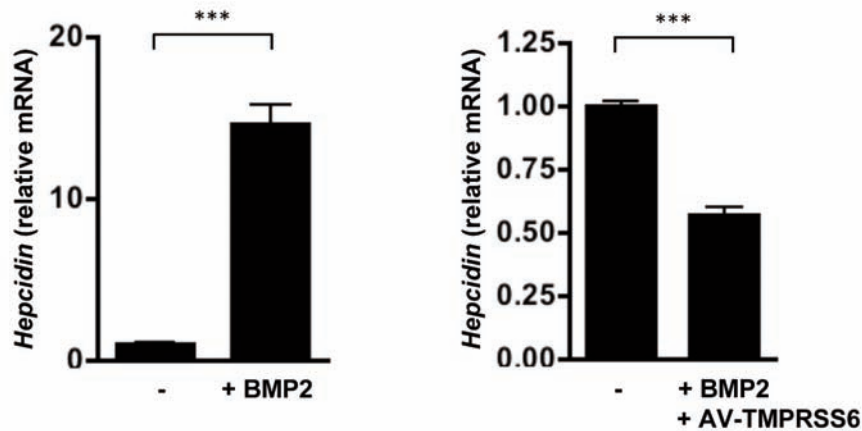
Online Supplementary Figure S1. Hepatocyte-specific deletion of HIF-2 α (A) Recombination efficiency for *Hif2*^{lox/lox} alleles quantified by real-time polymerase chain reaction of genomic DNA isolated from the liver of *Hif2a*^{lox/lox}Albumin Cre- (WT) and *Hif2a*^{lox/lox}Albumin Cre+ (KO) mice. (B) HIF-2 α mRNA levels in primary hepatocytes of WT and KO mice as determined by real-time polymerase chain reaction.



Online Supplementary Figure S2. Iron deficiency does not transcriptionally regulate furin or TMPRSS6 *Hif2a*^{lox/lox}Albumin Cre- and *Hif2a*^{lox/lox}Albumin Cre+ littermates were fed an iron deficient (-Fe diet) or control diet (Ctr) for 2 months after weaning. (A) BMP6, Furin and TMPRSS6 relative mRNA expression normalized to 18S mRNA. Results expressed as a fold-change compared with levels in *Hif2a*^{lox/lox}Albumin Cre- mice on a control diet. n \geq 4 for each group.



Online Supplementary Figure S3. Transcriptional regulation of hepcidin, BMP6 and HJV in the liver of *Vhlh*^{10x/10x} Albumin Cre⁺ and *Vhlh*^{10x/10x} *Hif1a*^{10x/10x} Albumin Cre⁺ mice. Relative mRNA expression normalized to 18S mRNA in the liver of *Vhlh*^{10x/10x} Albumin Cre⁺ (KO grey bar) or *Vhlh*^{10x/10x} *Hif1a*^{10x/10x} Albumin Cre⁺ (KO white bars) compared to *Vhlh*^{10x/10x} Albumin Cre⁻ (dark grey bar) or Ctr (black bars). Ctr: n=9; KO: n=8.



Online Supplementary Figure S4. Transcriptional regulation of hepcidin in primary hepatocytes. Incubation of primary hepatocytes with BMP2 (20 ng/mL) for 24 h, infected or not with a TMPRSS6 adenovirus (AV-Tmprss6) at a multiplicity of infection of 1. Hepcidin relative mRNA expression normalized to cyclophilin-A. n=3 per group.