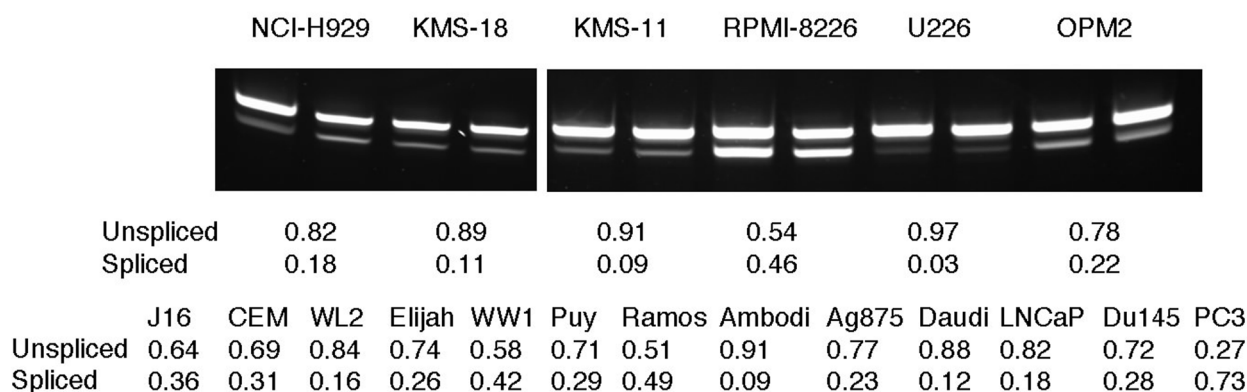


## Response of myeloma to the proteasome inhibitor bortezomib is correlated with the unfolded protein response regulator XBP-1

Silvia C. W. Ling,<sup>1,6</sup> Edwin K. K. Lau,<sup>1</sup> Ammira Al-Shabeeb,<sup>1</sup> Angela Nikolic,<sup>1</sup> Albert Catalano,<sup>2</sup> Harry Iland,<sup>2</sup> Noemi Horvath,<sup>3</sup> P. Joy Ho,<sup>2</sup> Simon Harrison,<sup>4,5</sup> Shaun Fleming,<sup>4</sup> Douglas E. Joshua,<sup>1,2</sup> and John D. Allen<sup>1</sup>

<sup>1</sup>Centenary Institute of Cancer Medicine and Cell Biology and the University of Sydney, Sydney, Australia; <sup>2</sup>Institute of Haematology, Royal Prince Alfred Hospital, Sydney, Australia; <sup>3</sup>Institute of Medical and Veterinary Sciences and the Royal Adelaide Hospital, Adelaide, Australia; <sup>4</sup>Haematology Department, Peter MacCallum Cancer Centre, East Melbourne, Australia, and <sup>5</sup>University of Melbourne, Parkville, Melbourne, Australia

Citation: Ling SCW, Lau EKK, Al-Shabeeb A, Nikolic A, Catalano A, Iland H, Horvath N, Ho PJ, Harrison S, Fleming S, Joshua DE, and Allen JD. Response of myeloma to the proteasome inhibitor bortezomib is correlated with the unfolded protein response regulator XBP-1. *Haematologica* 2012;97(1): 64-72. doi:10.3324/haematol.2011.043334



**Online Supplementary Figure S1.** Unspliced and spliced XBP-1 in myeloma, lymphoma and solid cancers. (A) Proportions of unspliced and spliced XBP-1 mRNA in myeloma cell lines. Log-phase PCR products spanning the intron were quantified by polyacrylamide gel electrophoresis and densitometry, corrected by reference to standard ratios of unspliced:spliced cDNA templates. Each sample was amplified in duplicate. (B) For comparison, ratios of unspliced:spliced XBP-1 mRNA in a panel of non-myeloma cell lines were determined in the same manner.