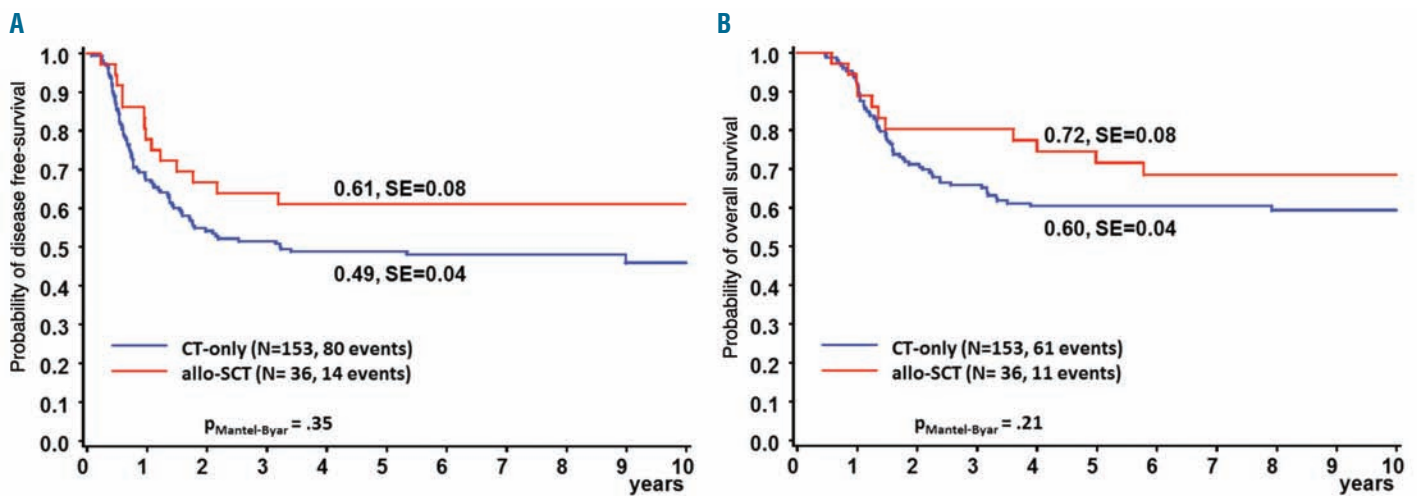


The role of matched sibling donor allogeneic stem cell transplantation in pediatric high-risk acute myeloid leukemia: results from the AML-BFM 98 study

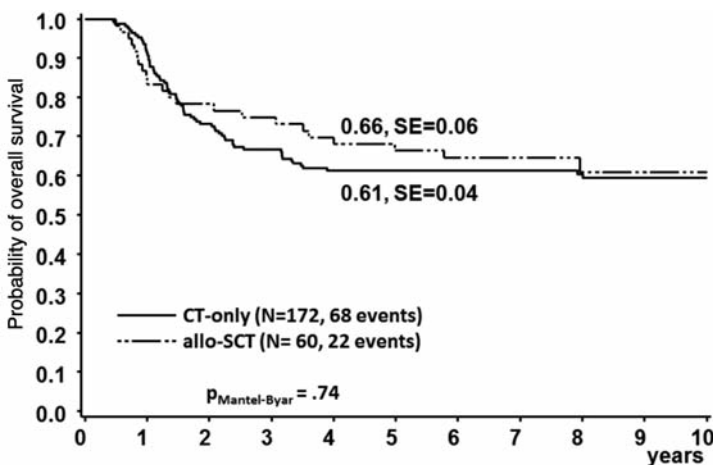
Jan-Henning Klusmann,¹ Dirk Reinhardt,¹ Martin Zimmermann,¹ Bernhard Kremens,² Josef Vormoor,³ Michael Dworzak,⁴ Ursula Creutzig,⁵ and Thomas Klingebiel⁶

¹Department of Pediatric Hematology/Oncology, Medical School Hannover, Hannover, Germany; ²Department of Pediatric Hematology and Oncology, University Children's Hospital, Essen, Germany; ³Northern Institute for Cancer Research; Newcastle University; Sir James Spence Institute, Fourth Floor; Royal Victoria Infirmary; Newcastle upon Tyne, UK; ⁴St. Anna Kinderspital and Children's Cancer Research Institute, Vienna, Austria; ⁵Department of Pediatric Hematology and Oncology, University Children's Hospital, Muenster, Germany, and ⁶University Children's Hospital III, Frankfurt, Germany

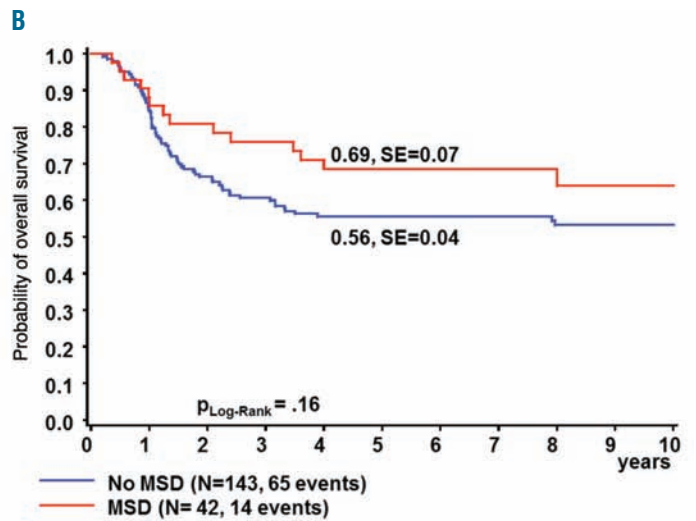
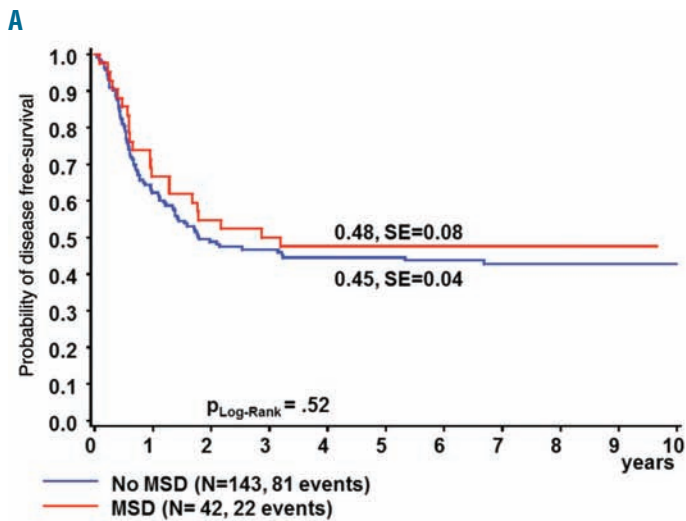
Citation: Klusmann J-H, Reinhardt D, Zimmermann M, Kremens B, Vormoor J, Dworzak M, Creutzig U, and Klingebiel T. The role of matched sibling donor allogeneic stem cell transplantation in pediatric high-risk acute myeloid leukemia: results from the AML-BFM 98 study. *Haematologica* 2012;97(4):24-29. doi:10.3324/haematol.2011.051714



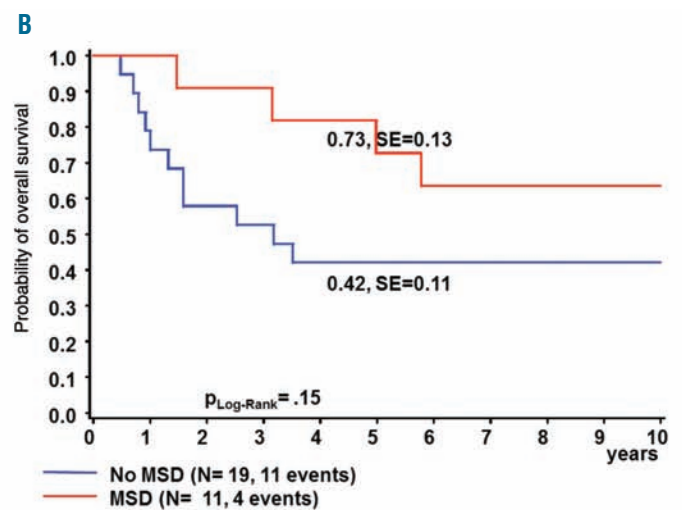
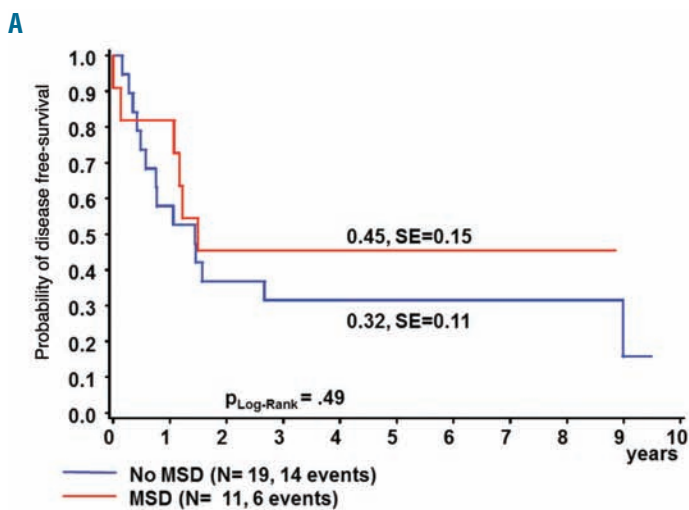
Online Supplementary Figure S1. As-treated analysis of patients with high-risk-AML receiving allogeneic stem cell transplantation (allo-SCT) or chemotherapy (CT) only. (A) Disease-free survival and (B) overall survival of high-risk-AML patients with a matched sibling donor (MSD) receiving allo-SCT and without MSD receiving chemotherapy-only, corrected for the time until transplantation [median: 0.43 years (3- 8 months)], landmark analysis: 5-year probabilities are given.



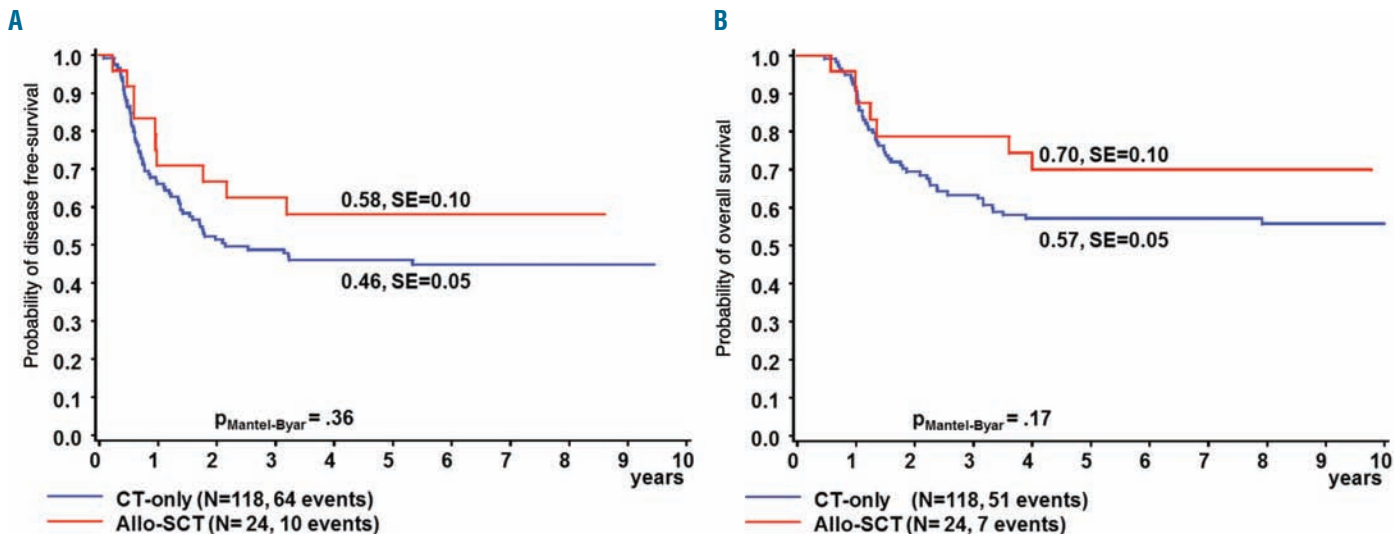
Online Supplementary Figure S2. As-treated analysis of patients with high-risk-AML receiving allogeneic stem cell transplantation (allo-SCT) from a matched sibling donor or a matched unrelated donor or receiving chemotherapy (CT) only. Overall survival of high-risk-AML patients receiving allo-SCT and chemotherapy-only, corrected for the time until transplantation [median: 0.43 years (3- 8 months)], landmark analysis: 5-year probabilities are given.



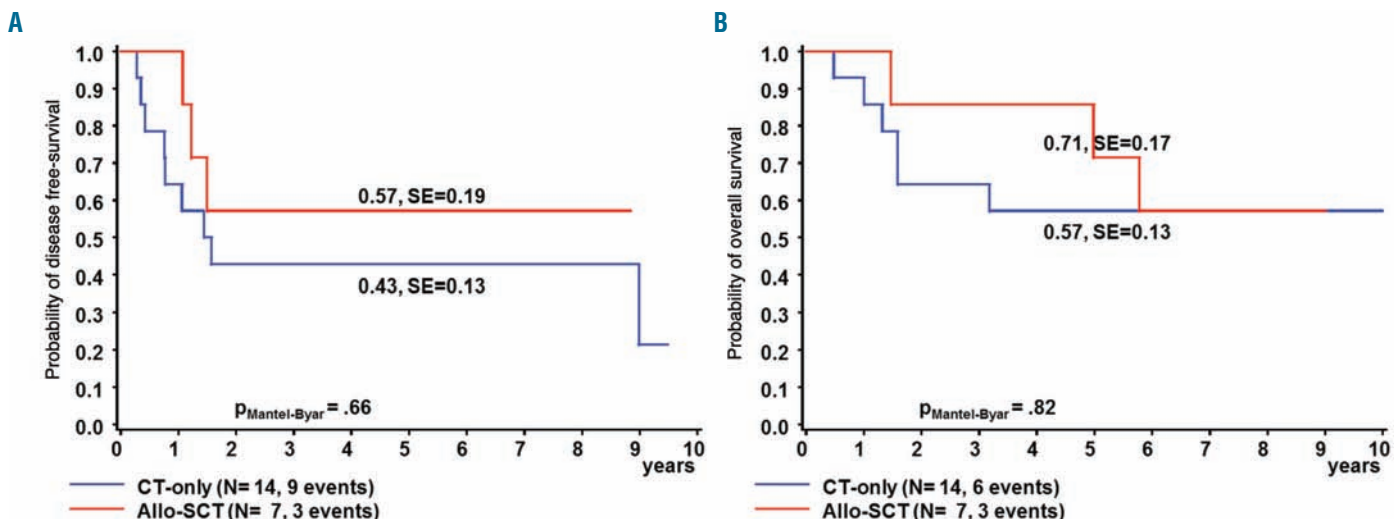
Online Supplementary Figure S3. Outcome of intermediate-risk AML patients assigned to allogeneic SCT (with MSD) or chemotherapy-only (no MSD). (A) Disease-free survival. (B) Overall survival. 5-year probabilities are given.



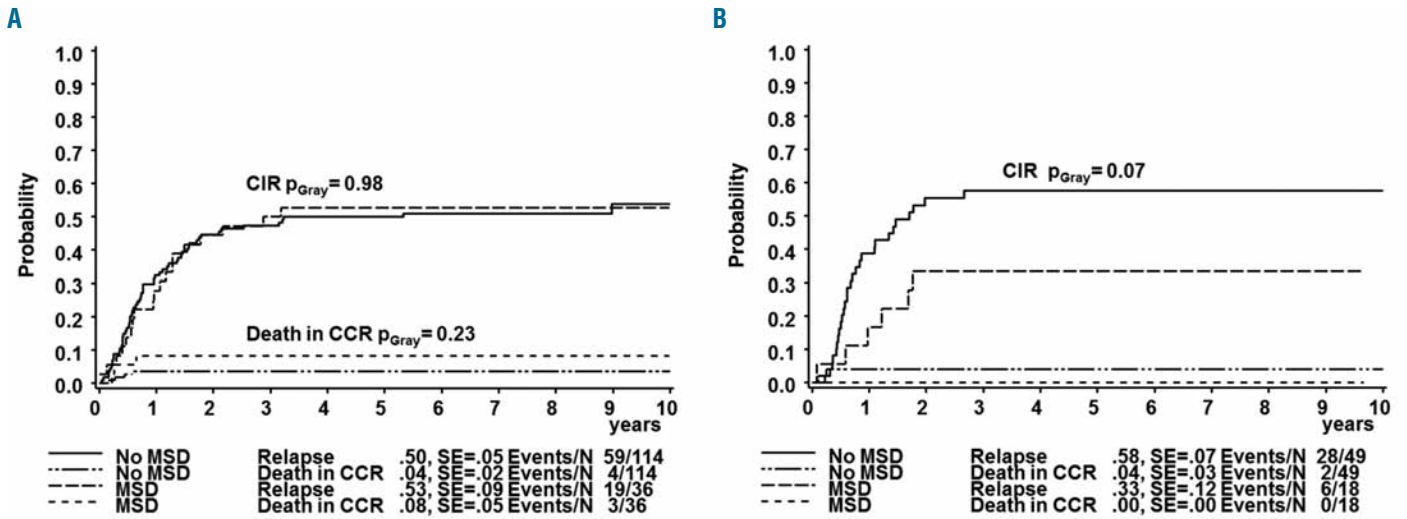
Online Supplementary Figure S4. Outcome of poor-risk AML patients assigned to allogeneic SCT (with MSD) or chemotherapy-only (no MSD) (A) Disease-free survival. (B) Overall survival. 5-year probabilities are given.



Online Supplementary Figure S5. As-treated analysis of intermediate-risk AML patients receiving allogeneic stem cell transplantation (allo-SCT) or chemotherapy (CT) only. (A) Disease-free survival and (B) overall survival of intermediate-risk AML patients with MSD receiving allo-SCT and without MSD receiving chemotherapy-only, corrected for the time until transplantation [median: 0.43 years (3- 8 months)], landmark analysis: 5-year probabilities are given.



Online Supplementary Figure S6. As-treated analysis of poor-risk AML patients receiving allogeneic stem cell transplantation (allo-SCT) or chemotherapy (CT) only. (A) Disease-free survival and (B) overall survival of poor-risk AML patients with MSD receiving allo-SCT and without MSD receiving chemotherapy-only, corrected for the time until transplantation [median: 0.43 years (3- 8 months)], landmark analysis: 5-year probabilities are given.



Online Supplementary Figure S7. Cumulative incidences of relapse (CIR) or death in continued complete remission (CCR). Patients (A) without and (B) with 11q23-aberration: 5-year incidences are given.

Online Supplementary Table S1. Comparison of relapses and death in complete remission (CR) (cumulative incidence).

	N	Relapse	Death in CR
No-MSD	186	49.1±3.7	3.2±1.3
MSD	61	45.9±6.5	4.9±2.8
P_{gray}		0.47	0.55

Online Supplementary Table S2. Summary of late effects occurring after allogeneic stem cell transplantation (allo-SCT) and chemotherapy (CT) only in first complete remission. Late sequelae were considered after 2 years or longer. After 2 years, N=131 and N=44 survivors were among those patients who received chemotherapy-only or allo-SCT in first complete remission, respectively. Data were available for 131 and 40 patients.

	CT-only		Allo-SCT		p_{Fischer}
	N	(%)	N	(%)	
Cardiomyopathy [§]	4	3.1	.	.	.57
Hepatitis*	2	1.6	.	.	1.0
Liver cirrhosis [§]	3	2.3	.	.	1.0
Growth hormone replacement [§]	2	1.6	1	2.7	0.55
Thyroid hormone replacement ⁺	16	13.1	7	18.9	0.43
Gonadal hormone replacement ⁺	7	5.9	4	10.3	0.26
No cyclical menstruation [°]	1	5.6	1	2.5	0.34
Continuous alopecia*	4	3.1	3	7.7	0.36
Skeletal abnormalities [§]	9	6.9	6	15	0.12
Other late effects [§]	25	19.2	14	35	0.08
Any late effect [§]	42	31.8	29	72.5	<0.01

[§]n=171, *n=166, °n=159, °n=22.

Online Supplementary Table S3. Cox regression analysis.

	Harzard Ratio	95% CI		p_{χ^2}
		LL	UL	
11q23	DFS	1.24	0.82 1.86	0.310
Interaction 11q23/ alloSCT	DFS	0.42	0.17 1.05	0.063
AlloSCT	DFS	0.91	0.69 1.20	0.495
11q23	OS	1.21	0.76 1.92	0.415
Interaction 11q23/ alloSCT	OS	0.19	0.04 .82	0.026
AlloSCT	OS	0.86	0.62 1.20	0.381

CI: confidence interval. LL: lower limit. UL: upper limit. DFS: disease-free survival; OS: overall survival; alloSCT: allogeneic stem cell transplantation.