

## Prognostic relevance of *RUNX1* mutations in T-cell acute lymphoblastic leukemia

Vera Grossmann, Wolfgang Kern, Stefan Harbich, Tamara Alpermann, Sabine Jeromin, Susanne Schnittger, Claudia Haferlach, Torsten Haferlach, and Alexander Kohlmann

MLL Munich Leukemia Laboratory, Munich, Germany

Citation: Grossmann V, Kern W, Harbich S, Alpermann T, Jeromin S, Schnittger S, Haferlach C, Haferlach T, and Kohlmann A. Prognostic relevance of *RUNX1* mutations in T-cell acute lymphoblastic leukemia. *Haematologica* 2011;96(12):1874-1877. doi:10.3324/haematol.2011.043919

Online Supplementary Table S1. Information on PCR primer sequences.

Primer	5' -> 3'	Tm °C	Primer	5' -> 3'	Tm °C	Length [including sequence specific Primer]	Mastermix (Roche Applied Science, Penzberg, Germany)
RUNX1_E03F	GCTGTTTGCAGGGTCCTAAC	60	RUNX1_E03R	GGCCTCCGCCTGTCCTC	64	348	GC-RICH PCR System
RUNX1_E04F	CATTGCTATTCTCTGCAACC	60	RUNX1_E04R	GTTTGTGCCATGAAACGTG	60	342	FastStart High Fidelity PCR System, dNTPack
RUNX1_E05F	AAATCCGGGAGTGTGTCA	60	RUNX1_E05R	GAAAGGTTGAACCCAAGGAA	59	341	FastStart High Fidelity PCR System, dNTPack
RUNX1_E06F	TGATCTCTCCCTCCCTCCT	60	RUNX1_E06R	CAGTTGGTCTGGGAAGGTGT	60	348	FastStart High Fidelity PCR System, dNTPack
RUNX1_E07F	ATTTGAACAAGGCCACTCA	60	RUNX1_E07R	AATGTTCTGCCAACTCCTTCA	60	342	FastStart High Fidelity PCR System, dNTPack
RUNX1_E08.01F	CTCCGCAACCTCCTACTCAC	60	RUNX1_E08.01R	CCCACCATGGAGAACTGGTA	61	342	GC-RICH PCR System
RUNX1_E08.02F	CCCGTTCCAAGCCAGCTC	64	RUNX1_E08.02R	GCTTGTCGCGAACAGGAG	61	342	GC-RICH PCR System

Primer A-Key: CGTATCGCCTCCCTCGGCCATCAG

Primer B-Key: CTATGCGCCTTGCCAGCCCGCTCAG

Online Supplementary Table S2. Information on molecular barcodes (MID).

MID1	ACGAGTGCCT
MID2	ACGCTCGACA
MID3	AGACGCACTC
MID4	AGCACTGTAG
MID5	ATCAGACACG
MID6	ATATCGCGAG
MID7	CGTGTCTCTA
MID8	CTCGCGTGTC
MID10	TCTCTATGCG
MID13	CATAGTAGTG
MID14	CGAGAGATAC
MID15	ATACGACGTA
MID16	TCACGTACTA
MID67	TCGATAGTGA

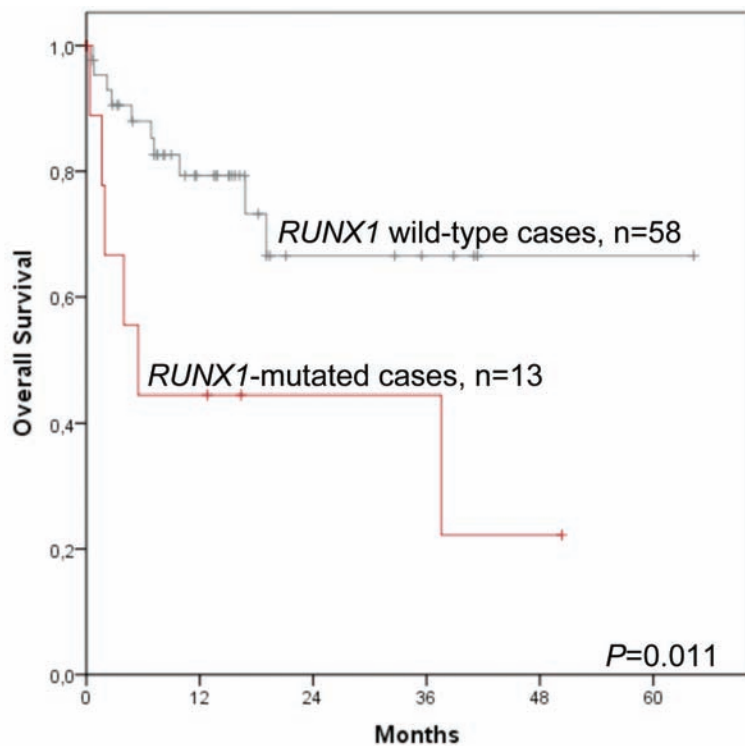
Online Supplementary Table S3. Amplification Protocol.

PCR - Protocol	95°C, 5 min
	95°C, 1 min
	60°C, 1 min
	72°C, 1 min
	72°C, 10 min
	12°C, ∞

} x 44

∞: endless.

Online Supplementary Figure S1. Kaplan–Meier overall survival estimates including the complete cohort of T-ALL cases according to the *RUNX1* mutation status.



Online Supplementary Figure S2. Kaplan–Meier overall survival estimates including the complete cohort of T-ALL cases according to the immunophenotype subtype.

