

Cytogenetic risk stratification in chronic myelomonocytic leukemia

Esperanza Such,¹ José Cervera,¹ Dolors Costa,² Francesc Solé,³ Teresa Vallespí,⁴ Elisa Luño,⁵ Rosa Collado,⁶ María J. Calasanz,⁷ Jesús M. Hernández-Rivas,⁸ Juan C. Cigudosa,⁹ Benet Nomdedeu,² Mar Mallo,³ Felix Carbonell,⁶ Javier Bueno,⁴ María T. Ardanaz,¹⁰ Fernando Ramos,¹¹ Mar Tormo,¹² Reyes Sancho-Tello,¹³ Consuelo del Cañizo,⁸ Valle Gómez,¹⁴ Victor Marco,¹⁵ Blanca Xicoy,¹⁶ Santiago Bonanad,¹⁷ Carmen Pedro,³ Teresa Bernal,⁵ and Guillermo F. Sanz¹

¹Hospital Universitario La Fe, Valencia; ²Hospital Clinic, Barcelona; ³Hospital del Mar, Barcelona; ⁴Hospital Universitario Vall D'Hebron, Barcelona; ⁵Hospital Central de Asturias, Oviedo; ⁶Hospital General de Valencia; ⁷Universidad de Navarra, Pamplona; ⁸Hospital Universitario de Salamanca; ⁹Centro Nacional de Investigaciones Oncológicas, Madrid; ¹⁰Hospital Txagorritxu, Vitoria; ¹¹Complejo Hospitalario, and IBIOMED Universidad de León; ¹²Hospital Clínico Universitario, Valencia; ¹³Hospital Arnau de Villanova, Valencia; ¹⁴Hospital La Princesa, Madrid; ¹⁵Hospital Arnau de Vilanova, Lleida; ¹⁶Hospital Germans Trias i Pujol, Badalona; and ¹⁷Hospital de la Ribera, Valencia, Spain

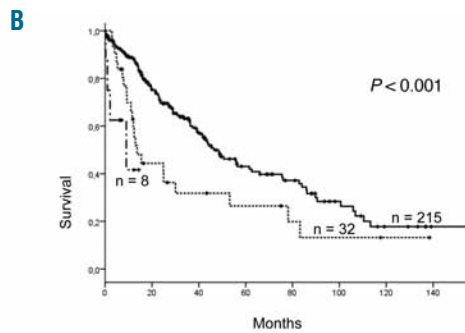
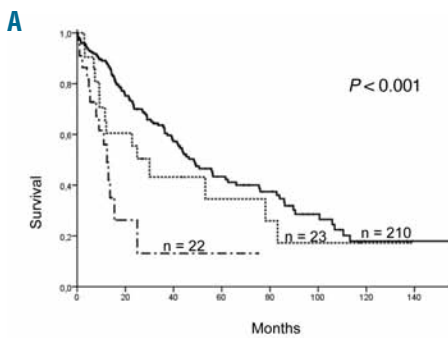
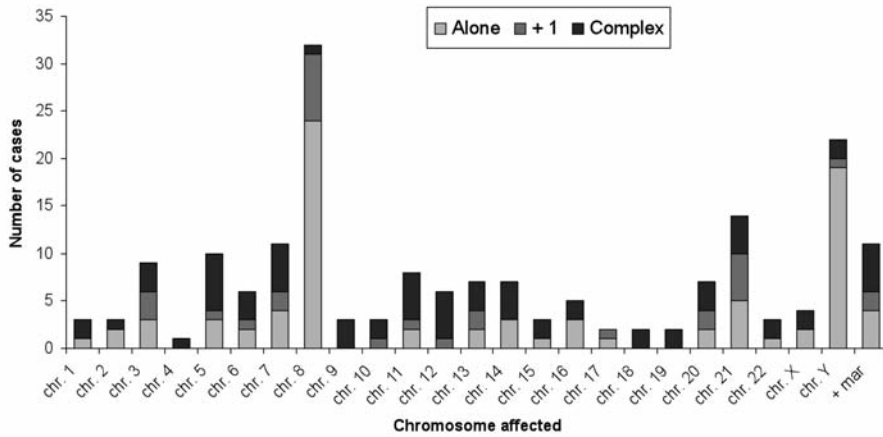
Citation: Such E, Cervera J, Costa D, Solé F, Vallespí T, Luño E, Collado R, Calasanz MJ, Hernández-Rivas JM, Cigudosa JC, Nomdedeu B, Mallo M, Carbonell F, Bueno J, Ardanaz MT, Ramos F, Tormo M, Sancho-Tello R, del Cañizo C, Gómez V, Marco V, Xicoy B, Bonanad S, Pedro C, Bernal T, and Sanz GF. Cytogenetic risk stratification in chronic myelomonocytic leukemia. *Haematologica* 2011;96(3):375-383. doi:10.3324/haematol.2010.030957

Online Supplementary Table S1. Overall survival and risk of AML evolution according to the new CMML-specific and the IPSS cytogenetic risk classifications in patients with MD-CMML and MP-CMML subtypes.

Characteristic	N. of patients (%)	Overall Survival		P	Time to 25% probability (mo)	AML evolution		P
		Median (mo)	Proportion Alive at 2 yr (%)			Cumulative probability of AML evolution (%)	At 2 yr	
CMML- MD								
CMML-specific cytogenetic risk classification				<0.001				0.016
Good risk	210	49	89		66	10	16	
Intermediate risk	23	30	69		8	19	30	
Poor risk	22	12	55		6	33	33	
IPSS cytogenetic risk classification				< 0.001				0.028
Low risk	215	48	70		66	10	16	
Intermediate risk	32	14	46		13	27	27	
High risk	8	9	42		7	25	25	
CMML- MP								
CMML-specific cytogenetic risk classification				< 0.001				0.022
Good risk	113	23	47		28	15	44	
Intermediate risk	19	11	27		5	16	58	
Poor risk	29	10	14		6	48	48	
IPSS cytogenetic risk classification				0.001				0.043
Low risk	114	23	47		28	15	44	
Intermediate risk	36	6	18		13	29	64	
High risk	11	15	28		6	47	47	

BM: bone marrow; PB: peripheral blood; IPSS: International Prognostic Scoring System.

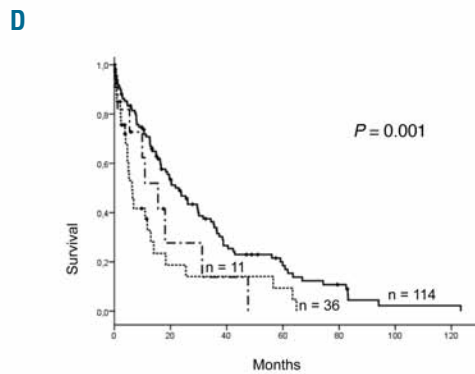
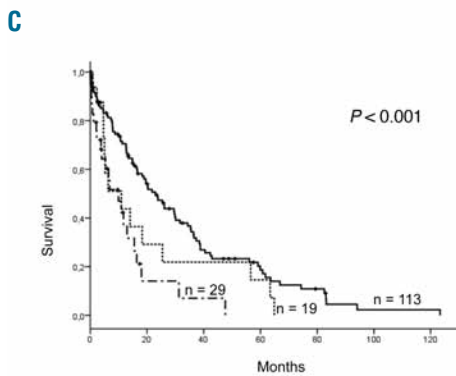
Online Supplementary Figure S1. Frequencies of most common cytogenetic abnormalities in the overall series subdivided into isolated abnormalities, with 1 additional abnormality, and complex abnormalities. Chromosome 8 + 1 abnormality details: del(5)(q31q33); +10; del(11)(q14); del(12)(p13) add(17)(p13.3); +19; and +21.



— Low risk
 Intermediate risk
 - . - . High risk

Risk Groups	P value
Low vs. Intermediate	0.06
Low vs. High	< 0.001
Intermediate vs. High	0.08

Risk Groups	P value
Low vs. Intermediate	0.028
Low vs. High	< 0.001
Intermediate vs. High	0.15



Risk Groups	P value
Low vs. Intermediate	0.12
Low vs. High	< 0.001
Intermediate vs. High	0.15

Risk Groups	P value
Low vs. Intermediate	0.001
Low vs. High	0.15
Intermediate vs. High	0.65

Online Supplementary Figure S2. Unadjusted probability of overall survival in patients with MD-CMML subtype according to (A) the new CMML-specific and (B) the IPSS cytogenetic risk classifications and in patients with MP-CMML subtype according to (C) the new CMML-specific and (D) the IPSS cytogenetic risk classifications.