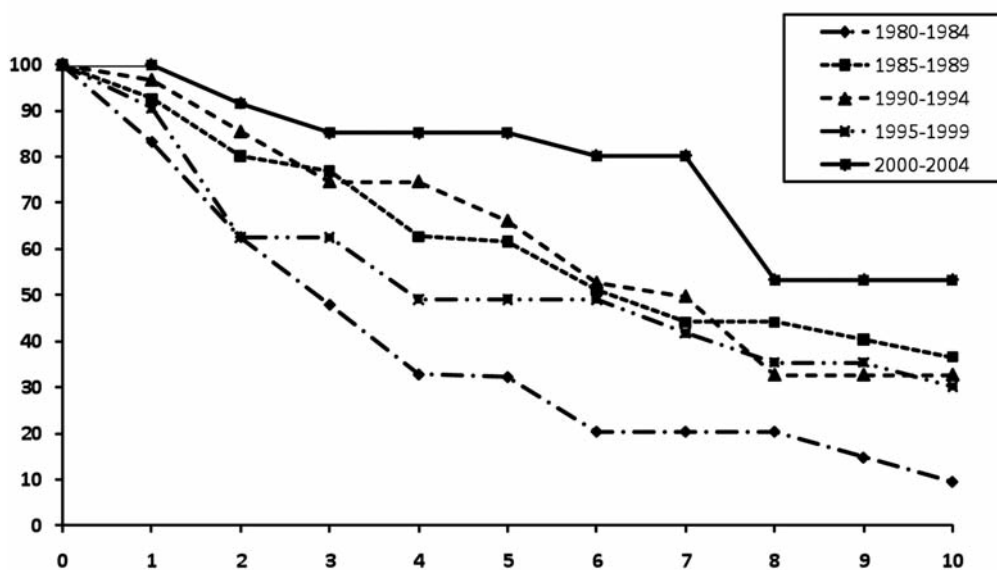


## Twenty-five years of epidemiological recording on myeloid malignancies: data from the specialized registry of hematologic malignancies of Côte d'Or (Burgundy, France)

Marc Maynadié,<sup>1,2,\*</sup> François Girodon,<sup>1,2,\*</sup> Ines Manivet-Janoray,<sup>1</sup> Morgane Mounier,<sup>1</sup> Francine Mugneret,<sup>3</sup> François Bailly,<sup>2</sup> Bernardine Favre,<sup>2,3</sup> Denis Caillot,<sup>4</sup> Tony Petrella,<sup>5</sup> Michel Flesch,<sup>4</sup> and Paule-Marie Carli<sup>1</sup>

<sup>1</sup>Registre des Hémopathies Malignes de Côte d'Or, EA 4184, Université de Bourgogne, Dijon; <sup>2</sup>Service d'Hématologie Biologique, CHU de Dijon; <sup>3</sup>Laboratoire de Cytogénétique, CHU de Dijon; <sup>4</sup>Service d'Hématologie Clinique, CHU de Dijon, and <sup>5</sup>Laboratoire d'Anatomie Pathologique, CHU de Dijon, France

Citation: Maynadié M,\* Girodon F, Manivet-Janoray I, Mounier M, Mugneret F, Bailly F, Favre B, Caillot D, Petrella T, Flesch M, and Carli P-M. Twenty-five years of epidemiological recording on myeloid malignancies: data from the specialized registry of hematologic malignancies of Côte d'Or (Burgundy, France). *Haematologica* 2011;96(1):55-61. doi:10.3324/haematol.2010.026252



Online Supplementary Figure S1. Relative survival of patients with chronic myeloid leukemia in the Côte d'Or Department of France, by 5-year periods of time, between 1980 and 2004.

Online Supplementary Table S1. Evolution of the world standard population incidence rates from 1980 to 2004 for acute myeloid leukemia (AML), myelodysplastic syndromes (MDS), myeloproliferative neoplasms (MPN) and myelodysplastic/myeloproliferative neoplasms in the Côte d'Or Department of France.

Period	AML		MDS		MPN		MDS/MPN	
	M	W	M	W	M	W	M	W
1980-1984	2.6	2.5	1.0	0.8	3.8	2.1	0.7	0.2
1985-1989	1.8	2.7	2.1	0.8	3.1	2.9	1.1	0.1
1990-1994	3.0	1.6	1.8	1.3	4.4	2.8	0.6	0.3
1995-1999	3.9	2.6	1.9	0.7	4.0	2.8	1.2	0.4
2000-2004	3.1	1.8	2.3	1.2	3	3.3	1.1	0.5
Annual rate	1.3%	- 1.1%	2.0 %*	2.9 %*	-0.6 %	2.3% **	1.7 %	3.8 %

**Online Supplementary Table S2.** Median observed survival (OS) in months, by groups and by entities of myeloid malignancies, in the Côte d'Or Department of France between 1980 and 2004. (nr : not reached ; - : not available).

Entities	ICD-0- 3 codes	Median OS months
AML with recurrent cytogenetic abnormalities		126.0
AML with t(8;21) (q22;q22)	9896	27.7
AML with 11q23 abnormalities	9897	14.2
AML with inv(16)(p13;q22) or t(16;16)(p13;q11)	9871	59.0
AML with t(15;17)(q22;q11-12)	9866	Nr
AML with multilineage dysplasia	9895	6.6
AML and MDS; therapy related	9920, 9987	3.4
AML not otherwise categorised		6.2
AML. minimal differentiated	9872	11.4
AML. without maturation	9873	9.8
AML. with maturation	9874	6.1
Acute myelomonocytic leukemia	9867	2.7
Acute monoblastic and monocytic leukemia	9891	8.0
Acute erythroid leukemia	9840	4.5
Acute megakaryoblastic leukemia	9910	-
Acute basophilic leukemia	9870	-
Acute pan-myelosis with myelofibrosis	9931	11.5
Myeloid sarcoma	9930	-
AML. nos and AL of ambiguous lineage	9861, 9805	8.9
<b>All acute myeloid leukemia</b>		<b>8.9</b>
Refractory anemia	9980	30.3
Refractory anemia with ringed sideroblasts	9982	54.8
Refractory anemia with excess of blasts	9983	17.6
Refractory anemia with multilineage dysplasia	9985	30.5
MDS associated with isolated 5q- abnormality	9986	30.3
Myelodysplastic syndrome. unclassifiable	9989	49
<b>All myelodysplastic syndromes</b>		<b>33.8</b>
Chronic myelogenous leukemia	9863, 9875	69
Polycythemia vera	9950	141
Essential thrombocythemia	9962	129
Primary myelofibrosis	9961	44
Others	9963, 9964	-
Chronic myeloproliferative neoplasm unclassifiable	9960,9975	18
<b>All myeloproliferative neoplasms</b>		<b>91.7</b>
Chronic myelomonocytic leukemia	9945	26.6
Juvenile chronic myelomonocytic leukemia	9946	-
Atypical chronic myeloid leukemia	9876	18.5
<b>All myelodysplastic/myeloproliferative neoplasms</b>		<b>26.6</b>