

Prognostic factors and outcomes of adult patients with acute myeloid leukemia after first relapse

Saiko Kurosawa,¹ Takuhiro Yamaguchi,² Shuichi Miyawaki,³ Naoyuki Uchida,⁴ Toru Sakura,³ Heiwa Kanamori,⁵ Kensuke Usuki,⁶ Takuya Yamashita,⁷ Yasushi Okoshi,⁸ Hirohiko Shibayama,⁹ Hirohisa Nakamae,¹⁰ Momoko Mawatari,¹¹ Kazuo Hatanaka,¹² Kazutaka Sunami,¹³ Manabu Shimoyama,¹⁴ Naohito Fujishima,¹⁵ Yoshinobu Maeda,¹⁶ Ikuo Miura,¹⁷ Yoichi Takaue,¹ and Takahiro Fukuda¹

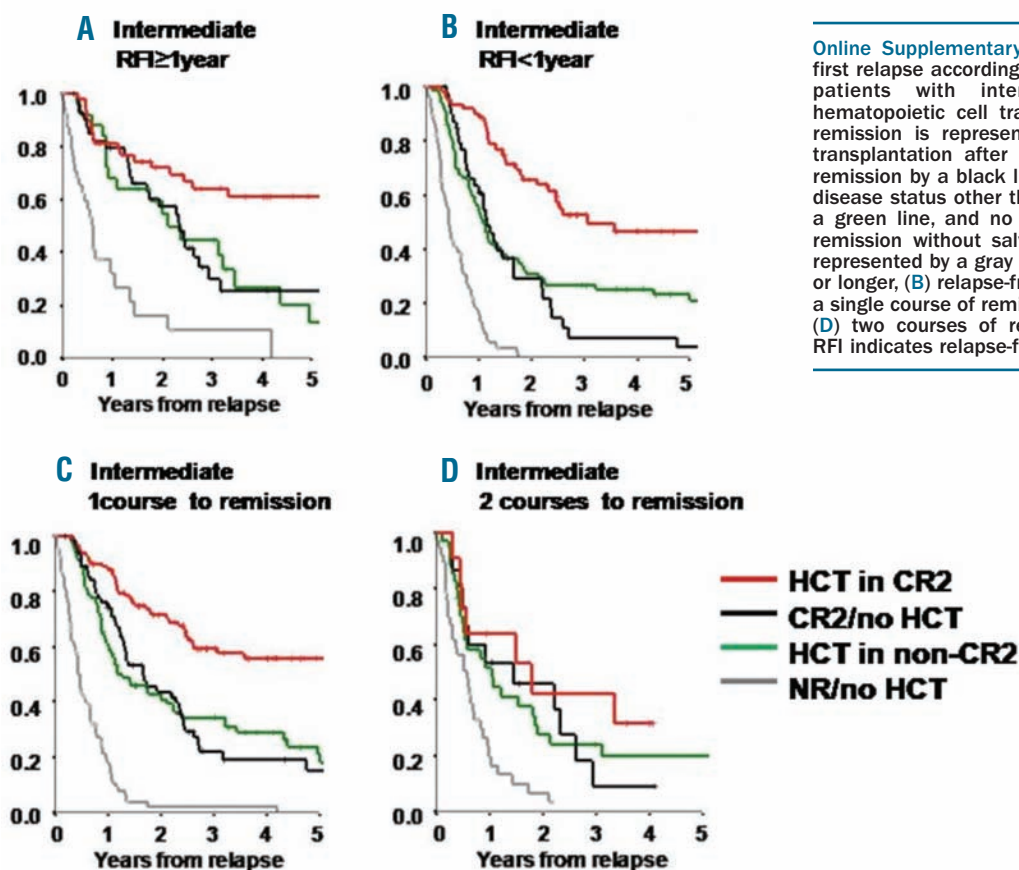
¹Stem Cell Transplantation Division, National Cancer Center Hospital, Tokyo; ²Clinical Data Management Division, University of Tokyo, Tokyo; ³Saiseikai Maebashi Hospital, Gunma; ⁴Toranomon Hospital, Tokyo; ⁵Kanagawa Cancer Center, Kanagawa; ⁶NTT Kanto Medical Center, Tokyo; ⁷Metropolitan Komagome Hospital, Tokyo; ⁸University of Tsukuba, Ibaraki; ⁹Osaka University Graduate School of Medicine, Osaka; ¹⁰Osaka City University Graduate School of Medicine, Osaka; ¹¹Gunma University Graduate School of Medicine, Gunma; ¹²Rinku General Medical Center, Osaka; ¹³Okayama Medical Center, Okayama; ¹⁴Kobe University Graduate School of Medicine, Kobe; ¹⁵Akita University, Akita; ¹⁶Okayama University Hospital, Okayama and ¹⁷St. Marianna University School of Medicine Hospital, Kanagawa, Japan

Citation: Kurosawa S, Yamaguchi T, Miyawaki S, Uchida N, Sakura T, Kanamori H, Usuki K, Yamashita T, Okoshi Y, Shibayama H, Nakamae H, Mawatari M, Hatanaka K, Sunami K, Shimoyama M, Fujishima N, Maeda Y, Miura I, Takaue Y, and Fukuda T. Prognostic factors and outcomes of adult patients with acute myeloid leukemia after first relapse. *Haematologica* 2010;95(11):1857-1864. doi:10.3324/haematol.2010.027516

Online Supplementary Table S1. Characteristics of patients undergoing HCT in CR1 or after relapse.

Characteristics	HCT in CR1 N=494 (%)	HCT after relapse N=527 (%)
Stem cell source		
Matched related donor	214 (44)	154 (31)
1-Ag mismatched related donor	26 (5)	30 (6)
Unrelated bone marrow	179 (37)	199 (40)
Umbilical cord blood	63 (13)	120 (24)
Conditioning		
Myeloablative		
TBI-based	130 (27)	150 (29)
Non TBI-based	227 (47)	184 (36)
Reduced intensity	124 (26)	176 (35)

HCT: hematopoietic cell transplantation; CR1: first complete remission; BM: bone marrow; TBI: total body irradiation



Online Supplementary Figure S1. Overall survival after first relapse according to treatment after relapse among patients with intermediate-risk AML: allogeneic hematopoietic cell transplantation in second complete remission is represented by a red line, no allogeneic transplantation after achievement of second complete remission by a black line, allogeneic transplantation in a disease status other than second complete remission by a green line, and no achievement of second complete remission without salvage allogeneic transplantation is represented by a gray line (A) relapse-free interval 1 year or longer, (B) relapse-free interval shorter than 1 year, (C) a single course of remission induction chemotherapy, and (D) two courses of remission induction chemotherapy. RFI indicates relapse-free interval.

Appendix: participating centers

National Cancer Center Hospital (Tokyo), Toranomon Hospital (Tokyo), Saiseikai Maebashi Hospital (Gunma), Kanagawa Cancer Center (Kanagawa), NTT Medical Center Tokyo (Tokyo), Metropolitan Komagome Hospital (Tokyo), Tsukuba University (Ibaraki), Osaka University (Osaka), Osaka City University (Osaka), Gunma University (Gunma), Rinku General Medical Center (Osaka), Okayama Medical Center (Okayama), Kobe University (Hyogo), Akita University (Akita), Okayama University (Okayama), Fujita Health University (Aichi), Kurume University (Fukuoka), Jikei University (Tokyo), Ehime Prefectural Central Hospital (Ehime), Nagasaki University (Nagasaki), Nihon University (Tokyo), Metropolitan Bokutoh Hospital (Tokyo), Dokkyo Medical University (Tochigi), University of Tokyo (Tokyo), St. Marianna University Yokohama Seibu Hospital (Kanagawa), Sasebo City General Hospital (Nagasaki), Tokyo Medical Center (Tokyo), Matsushita Memorial Hospital (Osaka), Jichi Medical University (Tochigi), Teikyo University (Tokyo), Shimane Prefectural Central Hospital (Shimane), Miyagi Prefectural Cancer Center (Miyagi), Yokohama City University (Kanagawa), Yokohama City University Medical Center (Kanagawa), National Defense Medical College Hospital (Saitama), Sapporo Medical University (Hokkaido), Fukuoka University Hospital (Fukuoka), Saga Prefectural Hospital Koseikan (Saga), Iwate Prefectural Central Hospital (Iwate), Tokushima Red Cross Hospital (Tokushima), Toyama Prefectural Central Hospital (Toyama), Musashino Red Cross Hospital (Tokyo), Kyoto Prefectural University of Medicine (Kyoto), Kawasaki Medical School Hospital (Okayama), University of Yamanashi (Yamanashi), Kyushu Kosei Nenkin Hospital (Fukuoka), Northern Fukushima Medical

Center (Fukushima), Kagawa University (Kagawa), National Kyushu Cancer Center (Fukuoka), Hirosaki University (Aomori), Hamanomachi Hospital (Fukuoka), Shinshu University (Nagano), Tenri Hospital (Nara), Gifu University (Gifu), Niigata University (Niigata), Hokkaido University (Hokkaido), Tokyo Hitachi Hospital (Tokyo), Kanazawa University (Ishikawa), Yamaguchi University (Yamaguchi), Kumamoto Medical Center (Kumamoto), Mie University (Mie), Koga General Hospital (Miyazaki), St. Luke's International Hospital (Tokyo), Tohoku University (Miyagi), Tokushima University (Tokushima), Kyushu University (Fukuoka), Hyogo College of Medicine (Hyogo), Cancer Institute Ariake Hospital (Tokyo). The authors would like to thank all of the doctors who were involved in this study: Masato Watanabe, Nobuhiko Emi, Kazuaki Yakushiji, Shingo Yano, Yuichiro Nawa, Jun Taguchi, Jin Takeuchi, Junji Tomiyama, Yuko Nakamura, Masayuki Hino, Yasuhito Nannya, Fumiaki Sano, Yuki Yoshi Moriuchi, Takahiro Yano, Nobuhiko Uoshima, Masaki Mori, Haruko Tashiro, Nobu Akiyama, Hiroatsu Ago, Yasuo Tomiya, Hiroyuki Fujita, Shin Fujisawa, Fumihiko Kimura, Hiroshi Yasui, Yasushi Takamatsu, Eijo Matsuishi, Masaharu Wano, Keiji Ozaki, Takashi Yoshida, Hina Takano, Kyoko Taniguchi, Keiko Matsuhashi, Takahiro Nagashima, Yujiro Yamano, Tatsuyuki Kai, Fusako Waki, Ilseung Choi, Yoshiko Tamai, Tetsuya Eto, Toshiro Ito, Takamasa Hayashi, Nobuhiro Kanemura, Tatsuo Furukawa, Takashi Kuroha, Satoshi Hashino, Tomoyuki Endo, Satoshi Yamamoto, Akio Shigematsu, Shinji Sunaga, Akiyoshi Takami, Toshihiko Ando, Michihiro Hidaka, Atsushi Fujieda, Hitoshi Matsuoka, Sadamu Oakada, Yasushi Onishi, Kumiko Kagawa, Yasunobu Abe, Kazuhiro Ikegame, Tomohiro Myojo and Yoshinobu Kanda. We also wish to thank Takako Fujimoto for her invaluable help in making the study possible.