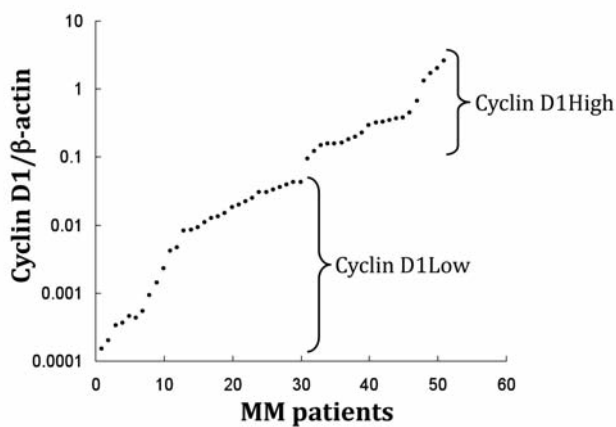


Identification of translocation products but not K-RAS mutations in memory B cells from patients with multiple myeloma

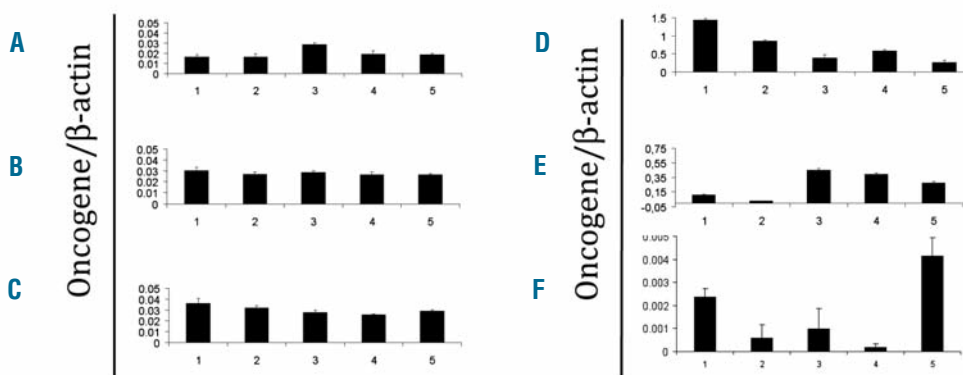
Thomas Rasmussen,¹ Jacob Haaber,² Inger Marie Dahl,³ Lene M. Knudsen,^{1,2} Gitte B. Kerndrup,² Marianne Lodahl,¹ Hans E. Johnsen,^{1,4} and Michael Kuehl⁵

¹Department of Hematology, Herlev Hospital, University of Copenhagen, Herlev, Denmark ²Department of Hematology, Odense University Hospital, Odense Denmark, ³Section of Hematology, University Hospital, Tromsø, Norway; ⁴Department of Hematology, Aalborg Hospital, Aarhus University Hospitals; ⁵Genetics Branch, Center for Cancer Research, National Cancer Institute, National Institutes of Health, Bethesda Naval Hospital, Building 8, Room 5105, Bethesda, MD, USA

Citation: Rasmussen T, Haaber J, Dahl IM, Knudsen LM, Kerndrup GB, Lodahl M, Johnsen HE, and Kuehl M. Identification of translocation products but not K-RAS mutations in memory B cells from patients with multiple myeloma. *Haematologica* 2010;95(10):1730-1737. doi:10.3324/haematol.2010.024778



Online Supplementary Figure S1. Identifying MM tumors that are *CCND1* high and low expressors. The actual *CCND1* / β -actin ratio was determined in FACS-purified MM plasma cells using real-time PCR as described in the *Design and Methods* section. Plasma cells with high *CCND1* expression (*CCND1*/ β -actin >0.1) and low to medium expression (*CCND1*/ β -actin >0.001 and <0.1) were identified.



Online Supplementary Figure S2. Variations in gene expression at the single-cell level. (A) Variation introduced by global RT-PCR. Plasma cells from a MM patient were FACS-sorted (100 cells/PCR tube) and global RT-PCR were performed in five separate runs and the *CCND1*/ β -actin ratios were determined, with the largest difference being 1.7-fold. (B) Variation due to real-time measurements in the same run (100 plasma cells/PCR tube), with the maximum difference in the *CCND1*/ β -actin ratio being 1.15-fold. (C) Variation due to real-time measurements on separate days (100 plasma cells/PCR tube), with the maximum difference in the *CCND1*/ β -actin ratio being 1.42-fold. (D) From a patient with *CCND1*-positive plasma cells, the plasma cells were FACS-sorted to one cell/PCR tube, with the maximum difference in the *CCND1*/ β -actin ratio being 5.4-fold. (E) From a patient with *FGFR3*-positive plasma cells, the plasma cells were FACS-sorted to one cell/PCR tube, with the maximum difference in the *FGFR3*/ β -actin ratio being 4.3-fold. (F) From a patient with *CCND1*-positive plasma cells, the plasma cells were FACS-sorted to 100 cells/PCR tube (MM-2, Table 1), with the maximum difference in the *CCND1*/ β -actin ratio being 20.5-fold.