

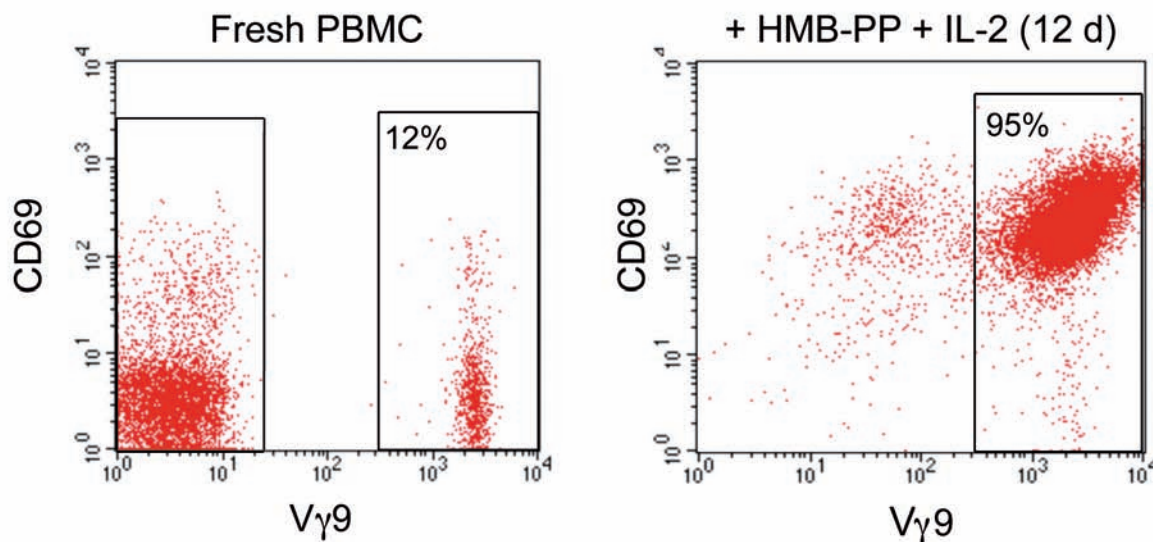
Identification of a panel of ten cell surface protein antigens associated with immunotargeting of leukemias and lymphomas by peripheral blood $\gamma\delta$ T cells

Anita Q. Gomes,^{1,2,3} Daniel V. Correia,^{1,2} Ana R. Grosso,¹ Telma Lança,¹ Cristina Ferreira,⁴ João F. Lacerda,⁴ João T. Barata,¹ Maria Gomes da Silva,⁵ and Bruno Silva-Santos^{1,2}

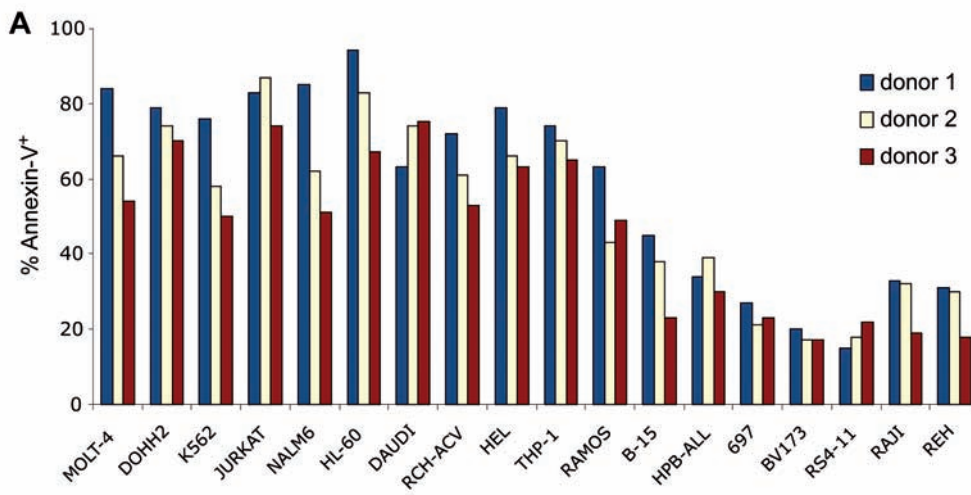
¹Instituto de Medicina Molecular, Faculdade de Medicina da Universidade de Lisboa; ²Instituto Gulbenkian de Ciência, Oeiras; ³Escola Superior de Tecnologia da Saúde de Lisboa, and ⁴Hospital de Santa Maria-CHLN, Lisboa, and ⁵Instituto Português de Oncologia de Lisboa, Francisco Gentil, Portugal

Citation: Gomes AQ, Correia DV, Grosso AR, Lança T, Ferreira C, Lacerda JF, Barata JT, Gomes da Silva M, and Silva-Santos B. Identification of a panel of ten cell surface protein antigens associated with immunotargeting of leukemias and lymphomas by peripheral blood $\gamma\delta$ T cells. *Haematologica* 2010;95(8):1397-1404. doi:10.3324/haematol.2009.020602

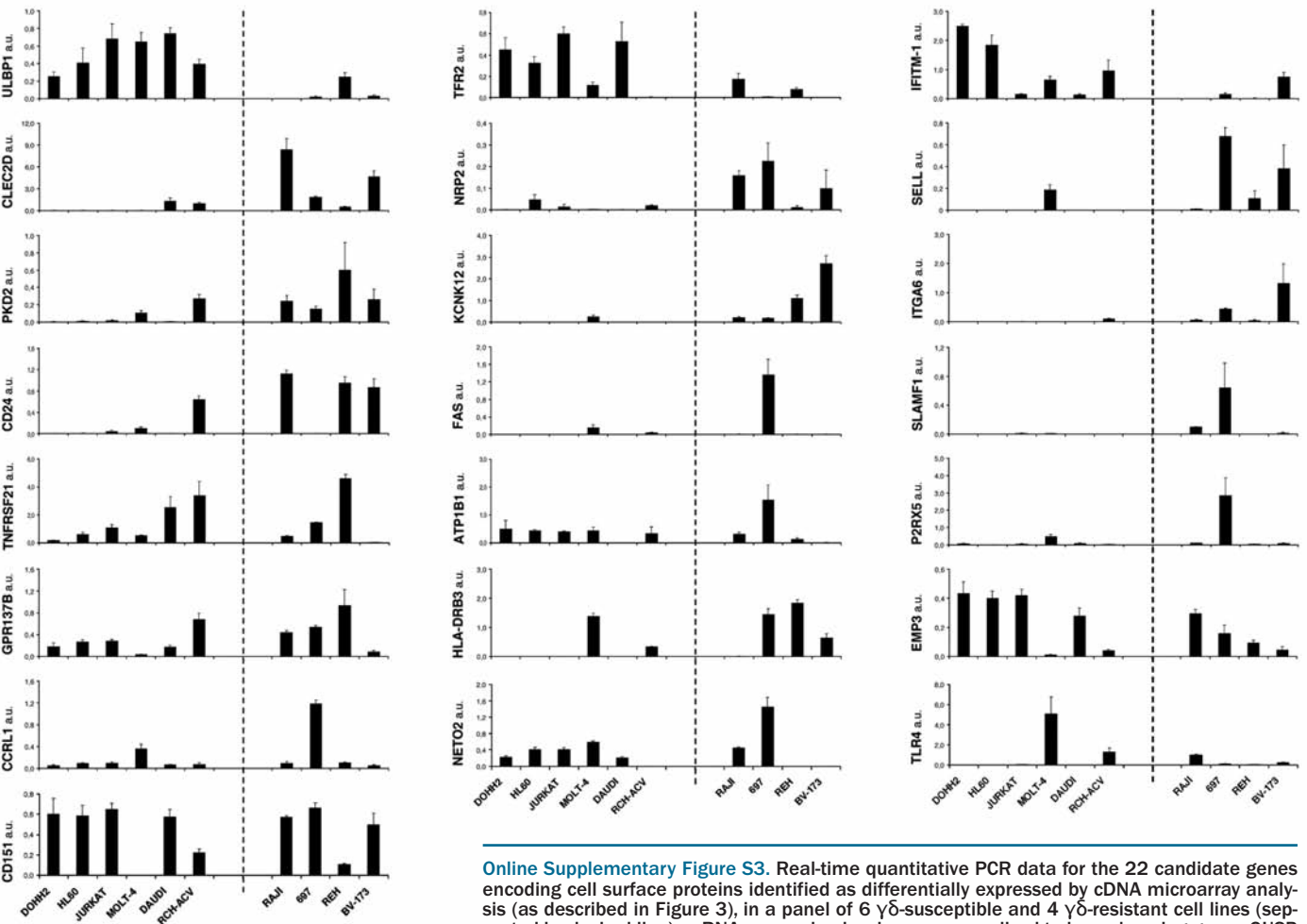
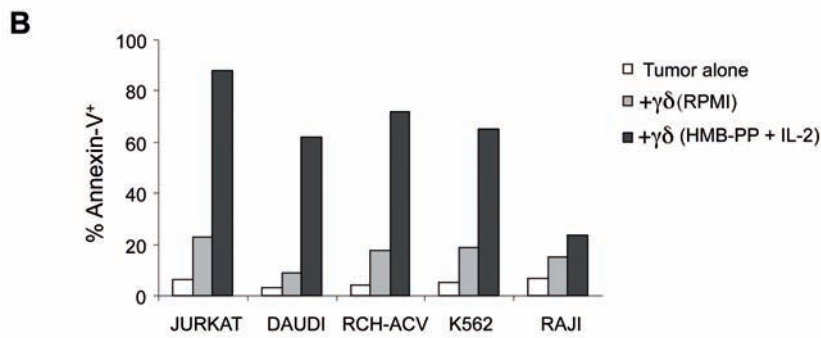
Online Supplementary Table S1-S9. SEE PDF Supplementary_Tables.xls



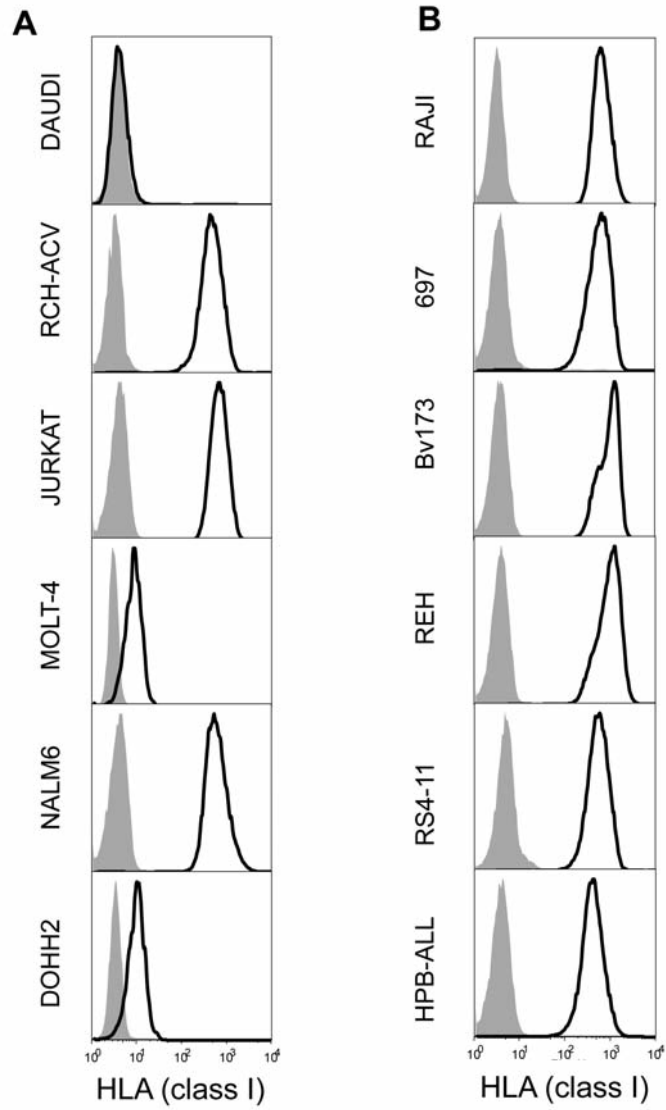
Online Supplementary Figure S1. Selective V γ 9+ T cell expansion and activation. Percentage of V γ 9+ T cells in fresh PBMCs (left plot) and upon stimulation with HMB-PP (1 nM) and IL-2 (100 U/ml) for 12 days (right plot). CD69 reports the activation status of the cells. These results are representative of all healthy donors used in this study (range of V γ 9+ enrichment: 90-98%).



Online Supplementary Figure S2. $\gamma\delta$ -PBL-mediated lysis of leukemia/ lymphoma cells. Killing assay results for leukemia/ lymphoma cell lines using 12-day cultured (as in Supplementary Figure 1) $\gamma\delta$ -PBL obtained from 3 independent healthy donors (A); and $\gamma\delta$ T cells pre-isolated by MACS and cultured for 12 h on plain medium (RPMI) or supplemented with HMB-PP and IL-2 (B). Plotted are percentages of Annexin-V⁺ (dead) cells.



Online Supplementary Figure S3. Real-time quantitative PCR data for the 22 candidate genes encoding cell surface proteins identified as differentially expressed by cDNA microarray analysis (as described in Figure 3), in a panel of 6 $\gamma\delta$ -susceptible and 4 $\gamma\delta$ -resistant cell lines (separated by dashed line). mRNA expression levels were normalized to housekeeping genes GUSB and PSMB6. Error bars correspond to three independent experiments.



Online Supplementary Figure S4. HLA class I expression on leukemia/lymphoma cells. Surface HLA class I expression in $\gamma\delta$ -susceptible cell lines (A) or $\gamma\delta$ -resistant cell lines (B), as analyzed by flow cytometry with anti-HLA-ABC mAb (W6/32). Shaded is isotype control staining.