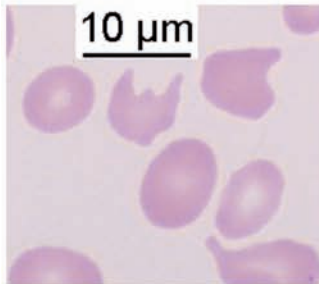


The morphological diagnosis of congenital dyserythropoietic anemia: results of a quantitative analysis of peripheral blood and bone marrow cells

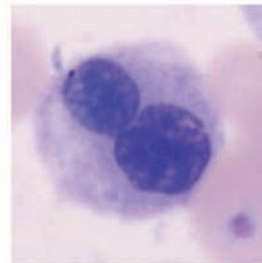
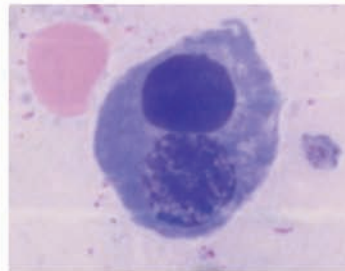
Citation: Heimpel H, Kellermann K, Neuschwander N, Högel J and Schwarz K. The morphological diagnosis of congenital dyserythropoietic anemia: results of a quantitative analysis of peripheral blood and bone marrow cells. *Haematologica*. 2010;95:1034-1036. doi:10.3324/haematol.2009.014563

CDA I

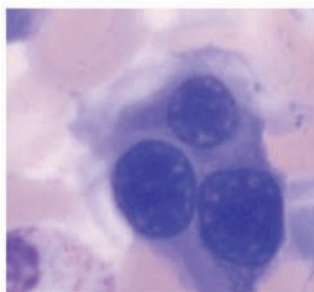
Peripheral blood



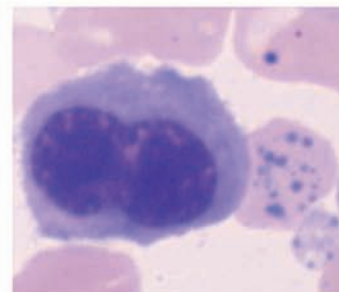
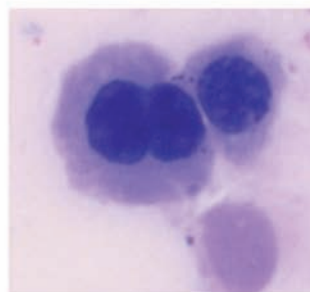
Binucleated erythroblasts



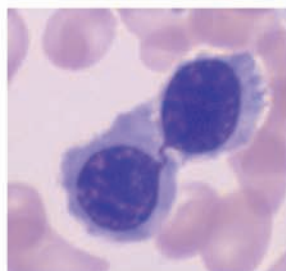
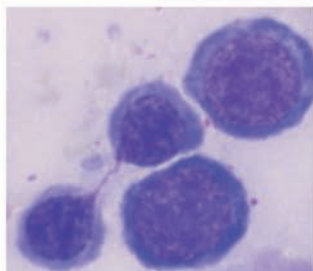
Multinucleated erythroblasts



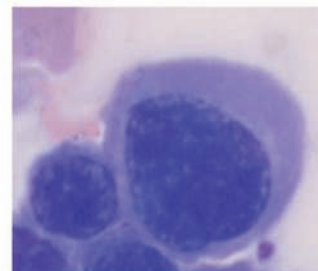
Incompletely divided nuclei



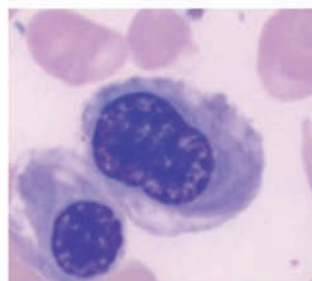
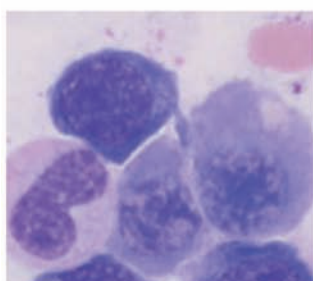
Chromatin bridges



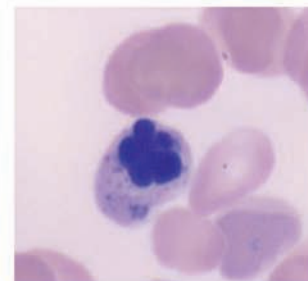
Polyloid cell



Abnormal chromatin structure

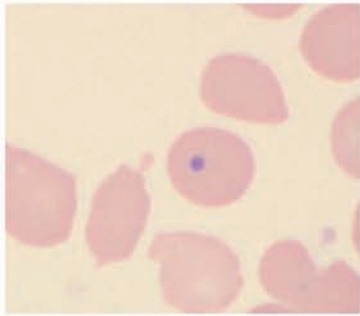


Karyorrhexis

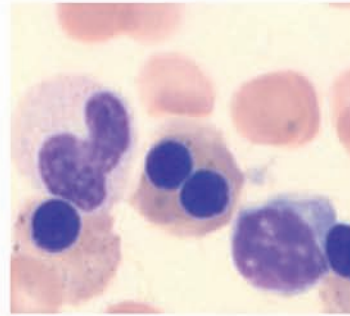
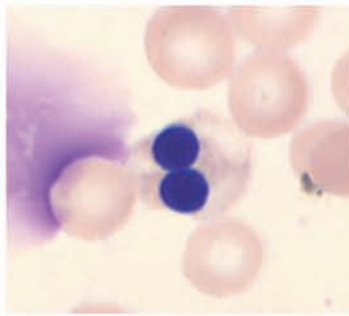


CDA II

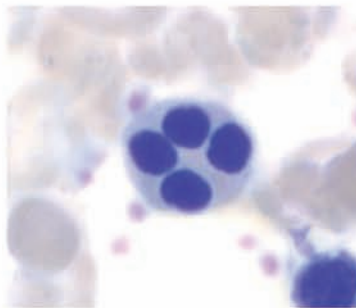
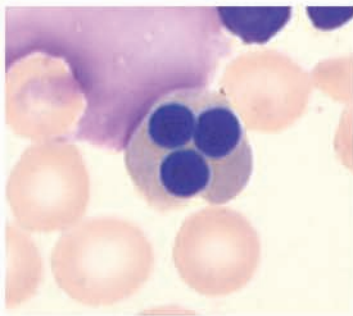
Peripheral Blood



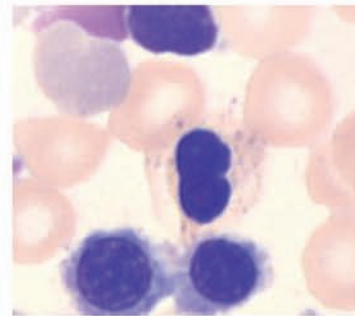
Binucleated erythroblasts



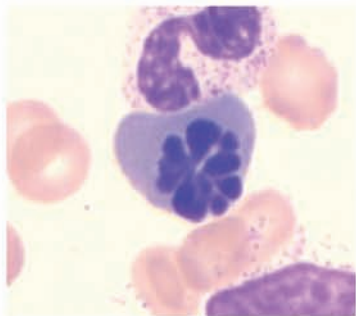
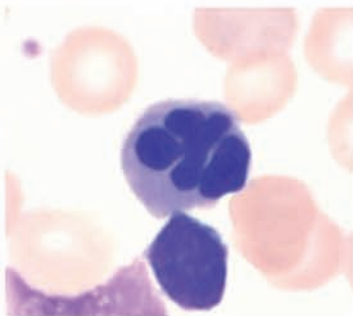
Multinucleated erythroblasts



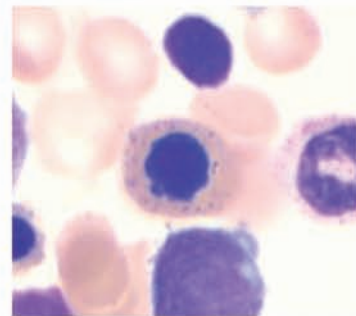
Incompletely divided nuclei



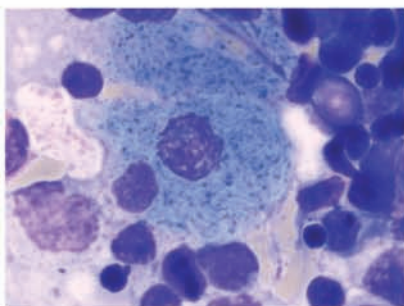
Karyorrhhexis



Basophilic stippling



Pseudo-Gaucher cell



Pseudo Gaucher-Cell, birefringence

