

## Erratum

In the article by Iacobucci et al. entitled "Identification of different Ikaros cDNA transcripts in Philadelphia-positive adult acute lymphoblastic leukemia by a high-throughput capillary electrophoresis sizing method", which appeared in the December 2008 issue of *Haematologica* (volume 93, pages 1814-21), mistakes were made in the preparation of Figure 5. In fact, the authors inadvertently included in this Figure images previously published by them in another paper on the same topic [Figure 2 in: Iacobucci et al. *Expression of spliced oncogenic Ikaros isoforms in Philadelphia-positive acute lymphoblastic leukemia patients treated with tyrosine kinase inhibitors: implications for a new mechanism of resistance*. *Blood* 2008 Nov 1;112(9):3847-55. Epub 2008 Jul 23].

The authors have now prepared a new version of Figure 5, which is reported in this Erratum. The authors apologize to the Editors of *Blood* and *Haematologica* and to readers of these journals for having submitted identical images in both papers without cross-referencing them appropriately. They want also to underscore that results and conclusions of both papers are unaffected by their inadvertent error.

doi:10.3324/haematol.2010.26815

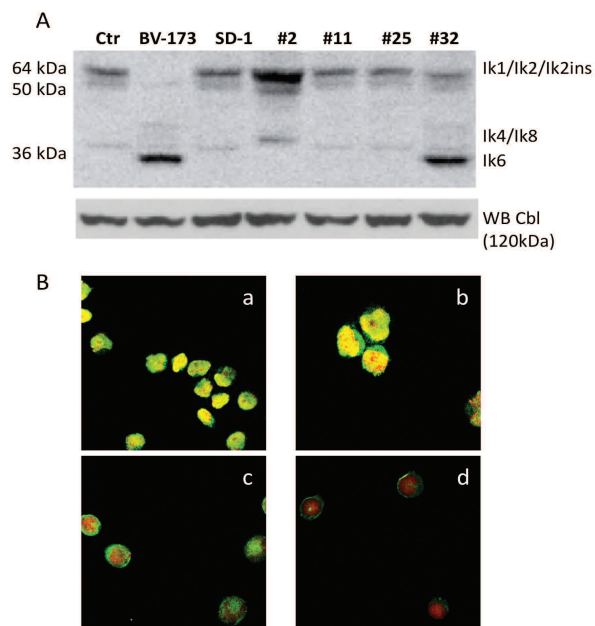


Figure. (A) Anti-Ikaros western blots of whole cell lysates from leukemic cell lines (SD-1 and BV-173) and leukemic bone marrow mononuclear cells with Ph<sup>+</sup> ALL (#2, #11, #25, and #32). The positions corresponding to the migration patterns of Ik-1 (~57 kDa), Ik-2/Ik2ins (~47 kDa) and Ik-6 (~37 kDa) proteins are indicated. Anti-Cbl western blotting of the whole cell lysates was performed as a control. (B) Expression and subcellular localization of Ikaros proteins in leukemic cells from Ph<sup>+</sup> ALL patients. In all images cells were stained with an Ikaros antibody (green) and with propidium iodide (red) to visualize DNA. In (a) and (b) confocal images of leukemic cells from patients expressing full-length Ikaros isoforms showed the characteristic multifocal nuclear localization pattern of Ikaros. (c) and (d) are confocal images of leukemic cells expressing Ik6 isoform and showing cytoplasmic expression of Ikaros (i.e., a bright green fluorescent rim surrounding the completely labeled red nuclei).