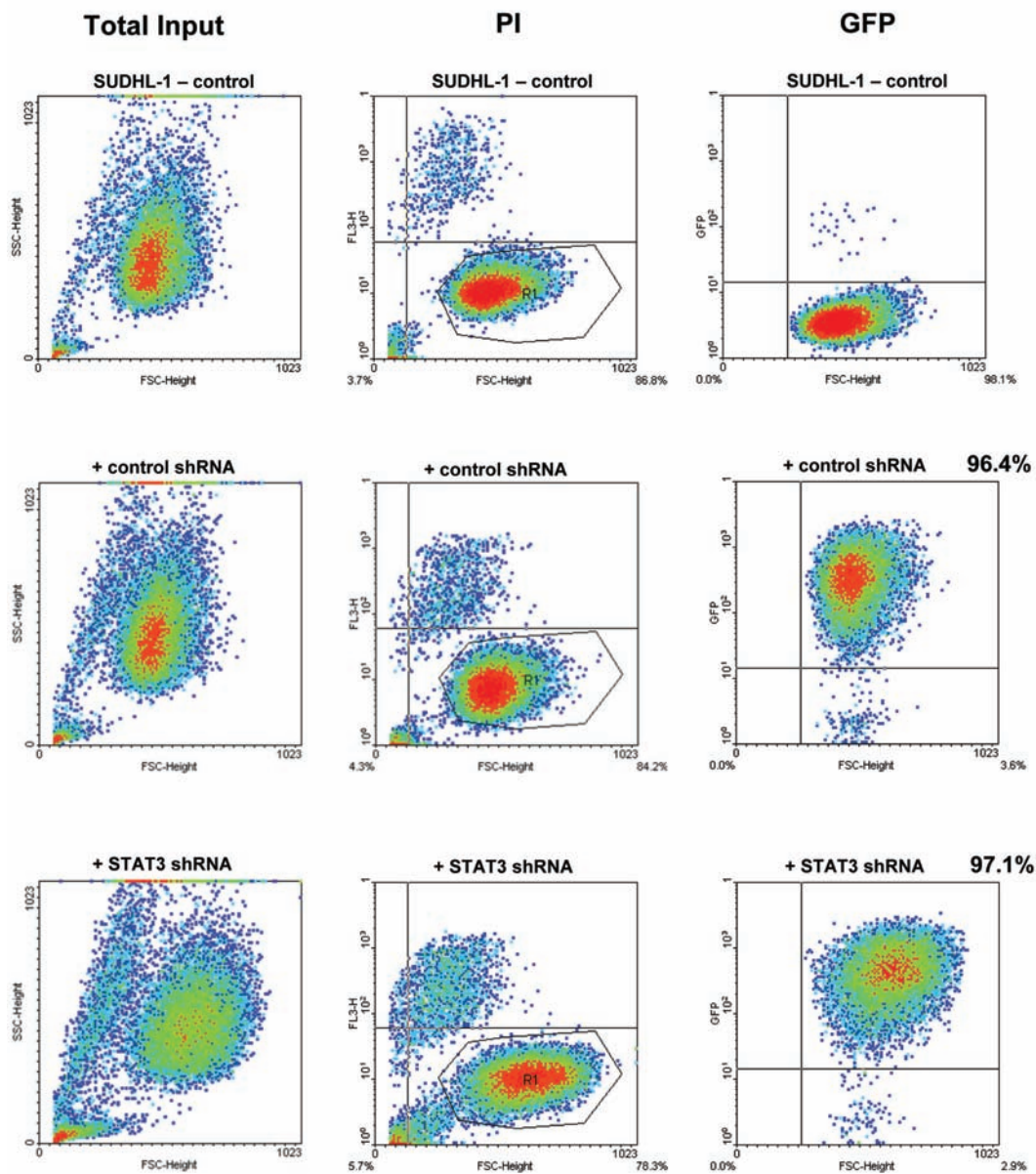


C/EBP β expression in ALK-positive anaplastic large cell lymphomas is required for cell proliferation and is induced by the STAT3 signaling pathway

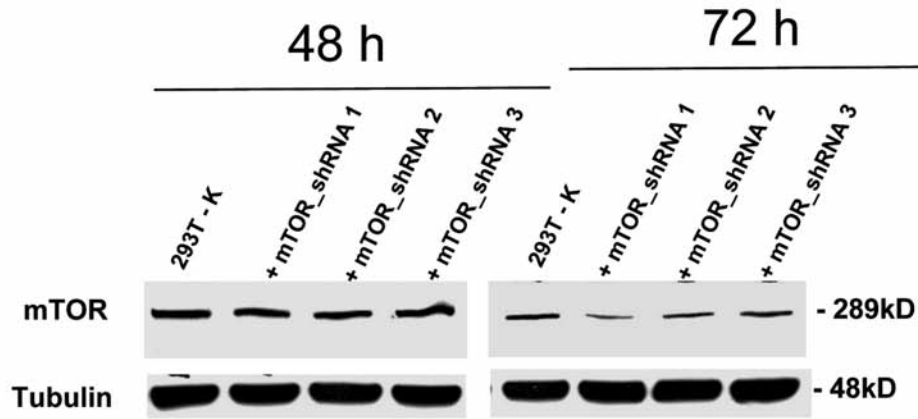
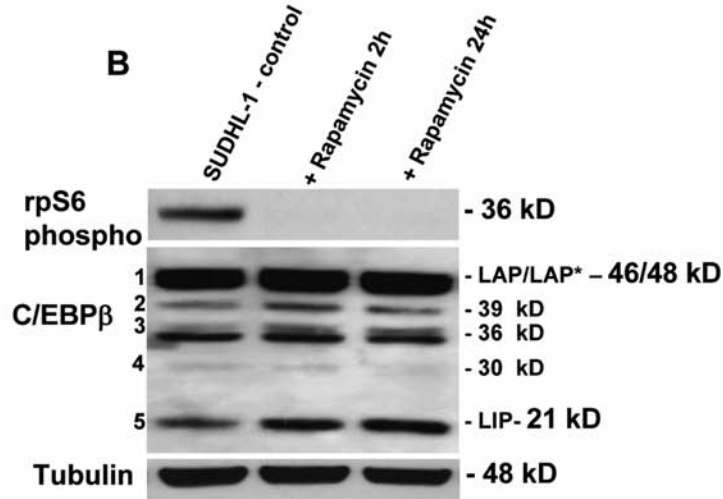
Natasa Anastasov,^{1,2} Irina Bonzheim,^{3,4} Martina Rudelius,⁵ Margit Klier,^{3,4} Therese Dau,¹ Daniela Angermeier,^{1,5} Justus Duyster,⁶ Stefania Pittaluga,⁷ Falko Fend,^{3,4} Mark Raffeld,⁷ and Leticia Quintanilla-Martinez^{1,3,4}

¹Institute of Pathology, Helmholtz Center Munich, German Research Center for Environmental Health, Germany; ²Institute of Radiation Biology, Helmholtz Center Munich, German Research Center for Environmental Health, Germany; ³Institute of Pathology, Eberhard-Karls-University, Tübingen, Germany; ⁴University Hospital and Comprehensive Cancer Center, Tübingen, Germany; ⁵Institute of Pathology, Technical University Munich, Germany; ⁶Internal Medicine III, Technical University Munich, Germany, and ⁷Hematopathology Section, Laboratory of Pathology, NCI, NIH, Bethesda, MD, USA

Citation: Anastasov N, Bonzheim I, Rudelius M, Klier M, Dau T, Angermeier D, Duyster J, Pittaluga S, Fend F, Raffeld M, and Quintanilla-Martinez L. C/EBP β expression in ALK-positive anaplastic large cell lymphomas is required for cell proliferation and is induced by the STAT3 signaling pathway. *Haematologica* 2010;95:760-767. doi:10.3324/haematol.2009.014050



Online Supplementary Figure S1. FACS analysis of SUDHL-1 cells, SUDHL-1 cells with control shRNA and SUDHL-1 cells with STAT3-shRNA. Propidium iodide (PI) labeling demonstrated the percentage of viable and dead cells in the total cell population 3 days after infection. Only the viable cell population (PI negative) was gated for GFP detection and determination of viral infection efficiency.

A**B**

Online Supplementary Figure S2. Efficient mTOR inactivation. (A) Three mTOR shRNA were analyzed for their mTOR silencing effect by western blot in HEK 293T cells 48 and 72 h after transfection. (B) Western blot analysis of the SUDHL-1 cells after mTOR inactivation with rapamycin for 2 h and 24 h. Each lane contained 30 μ g protein extract. Tubulin was used as a loading control.