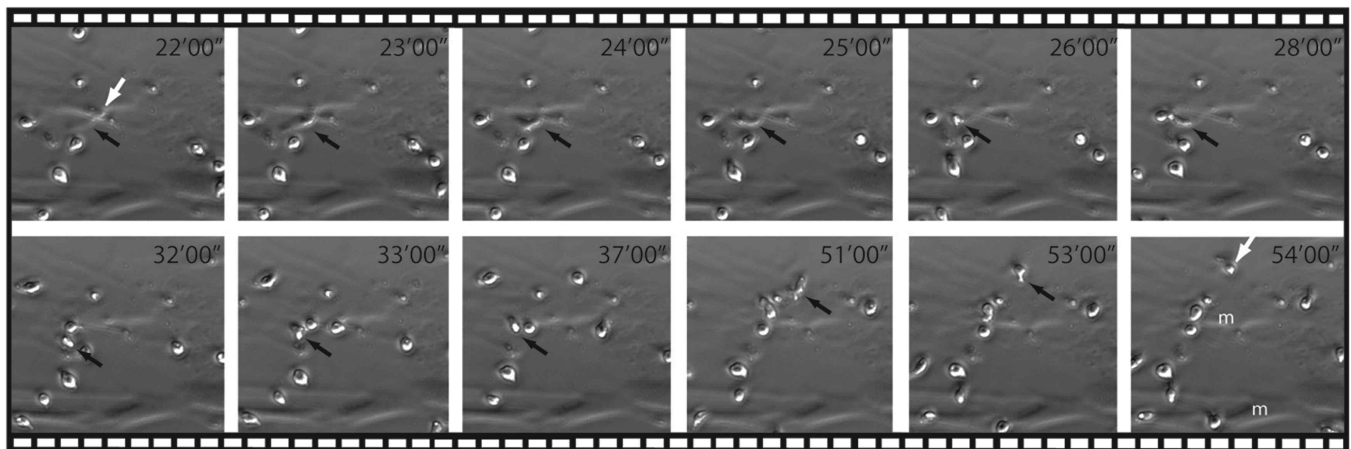


Hematopoietic stem cells in co-culture with mesenchymal stromal cells - modeling the niche compartments *in vitro*

Duohui Jing,¹ Ana-Violeta Fonseca,² Nael Alakel,¹ Fernando A. Fierro,¹ Katrin Muller,¹ Martin Bornhauser,¹ Gerhard Ehninger,¹ Denis Corbeil,² and Rainer Ordemann¹

¹Medical Clinic and Policlinic I, University Hospital, Dresden, and ²Biotechnology Center, Technical University, Dresden, Germany

Citation: Jing D, Fonseca A-V, Alakel N, Fierro FA, Muller K, Bornhauser M, Ehninger G, Corbeil D, and Ordemann R. Hematopoietic stem cells in co-culture with mesenchymal stromal cells - modeling the niche compartments *in vitro*. *Haematologica*. 2010;95:542-550. doi:10.3324/haematol.2009.010736



Supplementary Figure 1S. Extended version of Figure 1C in printed article. Individual frames taken from a time-lapse video demonstrating an individual HSC moving above (black arrow) and below (white arrow) the MSC layer for a period from 22 min to 55 min. M indicates MSC.