

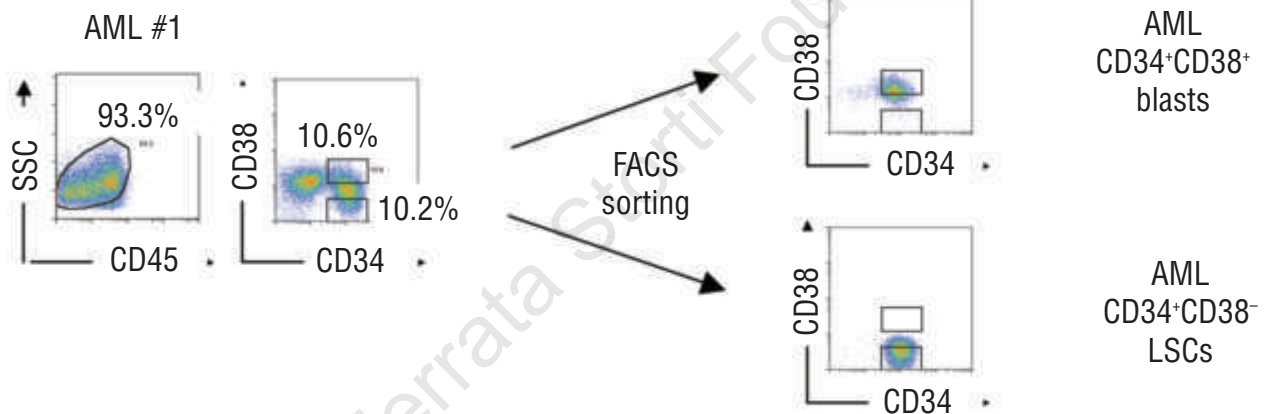
Human acute myeloid leukemia CD34⁺CD38⁻ stem cells are susceptible to allorecognition and lysis by single KIR-expressing natural killer cells

Ulrich Langenkamp,¹ Uwe Siegler,^{1,2} Simon Jörger,¹ Stefan Diermayr,¹ Alois Gratwohl,² Christian P. Kalberer,¹ and Aleksandra Wodnar-Filipowicz¹

¹Experimental Hematology, Department of Biomedicine, University Hospital Basel, Basel, and ²Division of Hematology, University Hospital Basel, Basel, Switzerland

Citation: Langenkamp U, Siegler U, Jörger S, Diermayr S, Gratwohl A, Kalberer CP, and Wodnar-Filipowicz A. Human acute myeloid leukemia CD34⁺CD38⁻ stem cells are susceptible to allorecognition and lysis by single KIR-expressing natural killer cells. *Haematologica* 2009. doi: 10.3324/haematol.005967

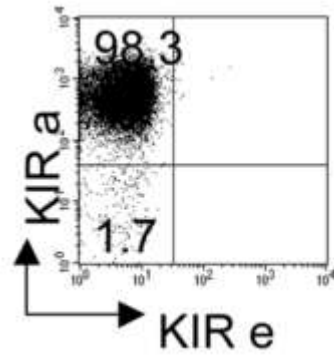
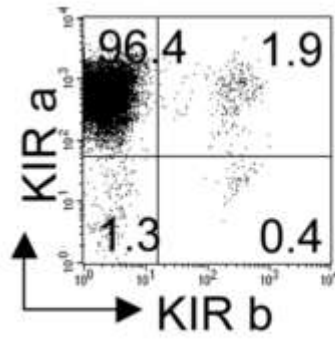
©2009 Ferrata Storti Foundation. This is an open-access paper.



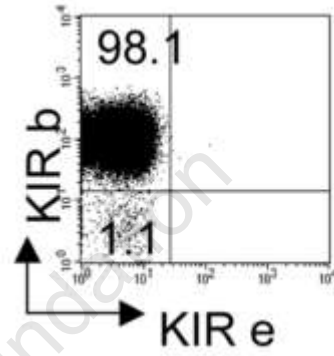
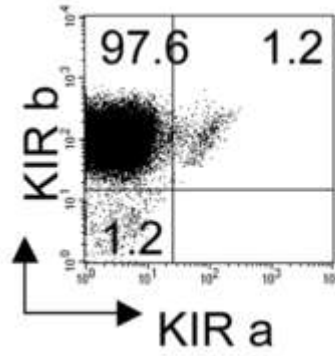
Online Supplementary Figure 1S. Purity of FACS-sorted AML cell subpopulations

Online Supplementary Table S1_refer to the corresponding PDF.

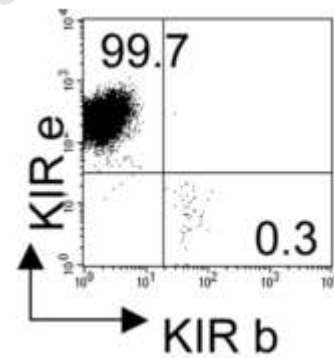
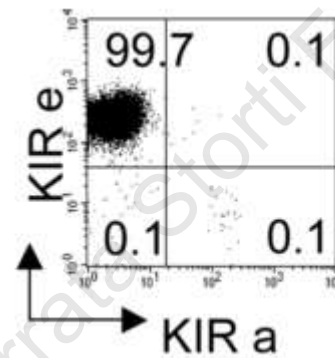
KIR a⁺
(N-NK-3)



KIR b⁺
(N-NK-1)



KIR e⁺
(N-NK-1)



Online Supplementary Figure 2S. Purity of single KIR⁺ NK cell lines at 2-3 weeks of culture. Examples of the purity of three different single KIR⁺ NK cell lines; for details see online Supplementary Table S1 (Part C).