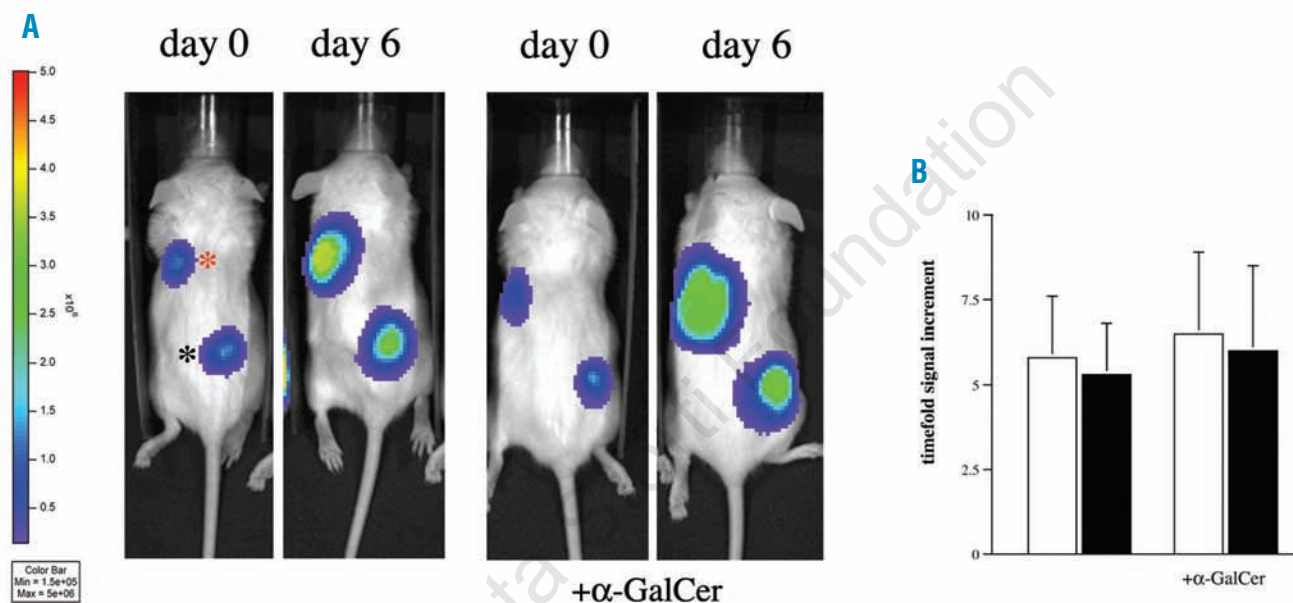


Adoptive immunotherapy mediated by *ex vivo* expanded natural killer T cells against CD1d-expressing lymphoid neoplasms

Davide Bagnara,¹ Adalberto Ibatici,² Mirko Corselli,² Nadia Sessarego,² Claudya Tenca,¹ Amleto De Santanna,³ Andrea Mazzarello,¹ Antonio Daga,⁴ Renzo Corvò,⁵ Giulio De Rossi,⁶ Francesco Frassoni,² Ermanno Ciccone,¹ and Franco Fais¹

¹Human Anatomy, Department of Experimental Medicine, University of Genoa; ²Centro Cellule Staminali e Terapia Cellulare, Ospedale San Martino, Genoa; ³Histology Sections, Department of Experimental Medicine, University of Genoa; ⁴Department of Translational Oncology and ⁵Department of Otolaryngology, IST-National Cancer Research Institute, Genoa, and ⁶Department of Pediatric Hematology and Oncology, Ospedale Bambino Gesù, Rome, Italy

Citation: Bagnara D, Ibatici A, Corselli M, Sessarego N, Tenca C, De Santanna A, Mazzarello A, Daga A, Corvò R, De Rossi G, Frassoni F, Ciccone E, and Fais F. Adoptive immunotherapy mediated by *ex vivo* expanded natural killer T cells against CD1d-expressing lymphoid neoplasms. *Haematologica* 2009;doi:10.3324/haematol.2008.001339



Online Supplementary Figure S1. FfLuc⁺C1R cell growth in NOD/SCID mice treated with α-GalCer only. (A) Mice were engrafted with 2×10^6 C1R-CD1c (red asterisk) and -CD1d (black asterisk) cells. At day 0 mice were imaged and treated with 2 μg of α-GalCer. Nodule growth was again evaluated at day 6. (B) Histograms representing the relative growth recorded at day 6. Representation of luc⁺C1R-CD1c (red asterisk) and luc⁺C1R-CD1d (black asterisk) nodule growth curves. Values indicate as the timefold signal increment obtained through the ratio of the light intensity values recorded at day 6 to value recorded at day 0. The data are representative of three experiments.