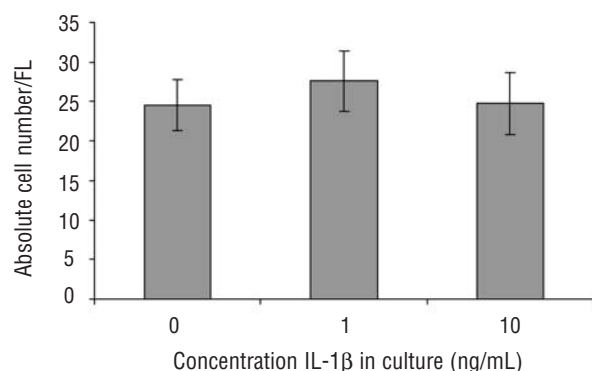


Interleukin-1 regulates hematopoietic progenitor and stem cells in the midgestation mouse fetal liver

Claudia Orelia, Marian Peeters, Esther Haak, Karin van der Horn, and Elaine Dzierzak

Erasmus University Medical Center, Dept. of Cell Biology and Genetics P.O. Box 2040, 3000 CA Rotterdam, The Netherlands

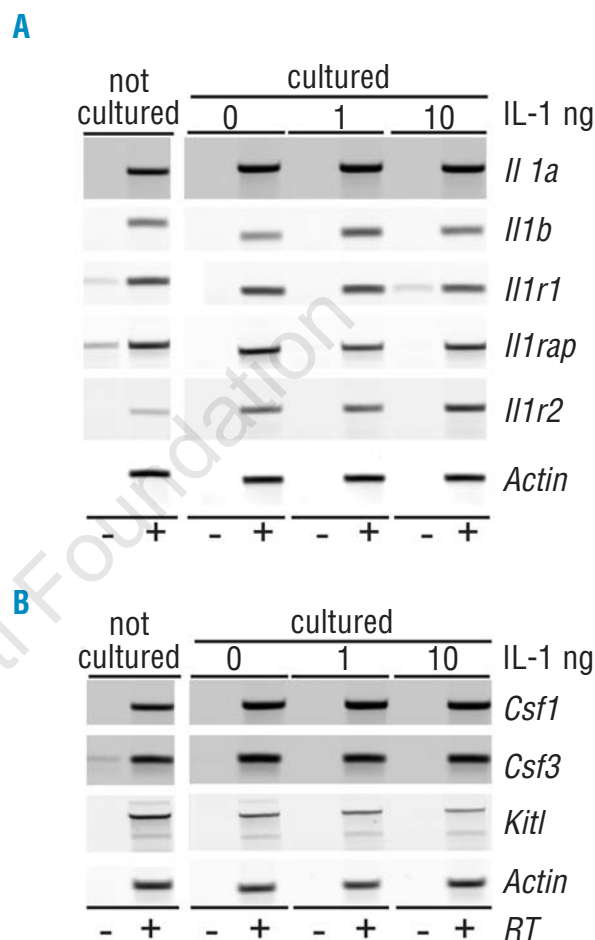
Citation: Orelia C, Peeters M, Haak E, van der Horn K, and E Dzierzak E. Interleukin-1 regulates hematopoietic progenitor and stem cells in the midgestation mouse fetal liver. *Haematologica* 2009; doi:10.3324/haematol.13728



Online Supplementary Figure S1. Absolute cell numbers in E11-E11.5 FL explant cultures. E11-E11.5 FL tissues were dissected and cultured as explants in the presence or absence of different concentrations IL-1 β (0 ng/mL, 1 ng/mL or 10 ng/mL). Following three days of culture, FL tissues were harvested and cells resuspended in PBS/10% FCS and cell numbers determined. Bars represent average absolute cell number per FL and error bar indicates SEM (n=12).

Online Supplementary Table S1. RT-PCR primer sequences.

| Primer name | Primer Sequence (5'-3') | Product size | Accession number |
|------------------|-------------------------|--------------|------------------|
| actin for | CCTGAACCCTAAGGCCAACCG | 397 | X03672 |
| actin rev | GCTCATAGCTTCTCCAGGG | | |
| Bcl2 for | GCACAGATGTCCAGTCAGCTG | 268 | NM_009741 |
| Bcl2 rev | GCCATATAGTTCACAAAGGC | | |
| Bax for | CCACCAGCTCTGAACAGATC | 694 | NM_007527 |
| Bax rev | GACCTGAGGTTTATTGGCGC | | |
| Bcl2l1 for | GGCGATGAGTTTGAAGTGGC | 916 | NM_009743 |
| Bcl2l1 rev | CCTCACTCAATGGCTCTTGG | | |
| Bcl2l1 (Bim) for | GAGAAGGTGGACAATTGCAG | 549 | AF032459 |
| Bcl2l1 (Bim) rev | CAATGCCTTCTCCATACCAG | | |
| Csf1 for | GAGAAGACTGATGGTACATCC | 636 | X05010 |
| Csf1 rev | CTGTACTCTGAGCTGGTCAG | | |
| Csf2 for | CAAAGAGGCAGACCTGAGAC | 350 | X03020 |
| Csf2 rev | GAAGCTGGATTGAGAGCTGG | | |
| Il1a for | GATTCACAACCTGTTCTGAG | 741 | X01450 |
| Il1a rev | CACTGGAGTAAACCCTACTG | | |
| Il1b for | CCTGTGTAATGAAAGACGGC | 334 | NM_008361 |
| Il1b rev | GGAGATTGAGCTGTCTGCTC | | |
| Il1rap for | GAATAGCCTCAGCTCACACAG | 458 | NM008364 |
| Il1rap rev | CTCTGTTCCACCTCAGACTC | | |
| Il1r1 for | ACCTCACTTCTCCTGGATCC | 300 | NM008362 |
| Il1r1 rev | GGGGTACAAAGAACAAGGCG | | |
| Il1r2 for | CCAGCATATTGGGGTCAAG | 435 | NM010555 |
| Il1r2 rev | CCTGGTTGTCAGTCCGTAGC | | |
| Kitl for | CTTTGGTGAACCTTTCATGTG | 1042 | NM_013598 |
| Kitl rev | TGTGGATCACTCCTAAGCCC | | |
| Slugh for | TCTGCCAGACACTATCTCAG | 444 | MMU79550 |
| Slugh rev | GCTCATCCAACCTACCAAGTC | | |



Online Supplementary Figure S2. IL-1 effects on gene expression levels of hematopoietic growth factors in FL organ cultures. E11.5 FL tissues were directly analyzed or analyzed after culture for three days in the presence or absence of 1 or 10 ng/mL IL-1 β . (A) RT-PCR gene expression analysis for the ligands IL-1 α and IL-1 β (*Il1a* and *Il1b*), subunits to the IL-1 receptor IL-1RI and IL-1RAccessory protein (*Il1r1* and *Il1rap*), and the decoy IL-1RII (*Il1r2*). No changes in the expression levels of these genes were detected. (B) Gene expression analysis for the hematopoietic growth factors M-CSF (*Csf1*), G-CSF (*Csf3*) and SCF (*Kitl*). No changes in the expression levels of these genes were detected. Expression of the housekeeping gene actin was used as a normalization control for the samples.