

Cup-like acute myeloid leukemia: new disease or artificial phenomenon?

Frank P. Kroschinsky,¹ Ulrike Schäkel,¹ Rainer Fischer,² Brigitte Mohr,¹ Uta Oelschlaegel,¹ Roland Repp,³ Markus Schaich,¹ Silke Soucek,¹ Gustavo Baretton,² Gerhard Ehninger¹ and Christian Thiede¹ on behalf of the DSIL (Deutsche Studieninitiative Leukämie) Study Group

¹First Medical Department¹ and ²Institute of Pathology, Dresden University Hospital, Dresden; ³University Hospital of Schleswig-Holstein, Campus Kiel, Department of Stem Cell and Immunotherapy, Kiel, Germany

Citation: Kroschinsky FP, Schäkel U, Fischer R, Mohr B, Oelschlaegel U, Repp R, Schaich M, Soucek S, Baretton G, Ehninger G, and Thiede C on behalf of the DSIL (Deutsche Studieninitiative Leukämie) Study Group. Cup-like acute myeloid leukemia: new disease or artificial phenomenon? *Haematologica* 2008 Feb; 93(2):283-286. DOI: 10.3324/haematol.11669

Supplementary Figure 1

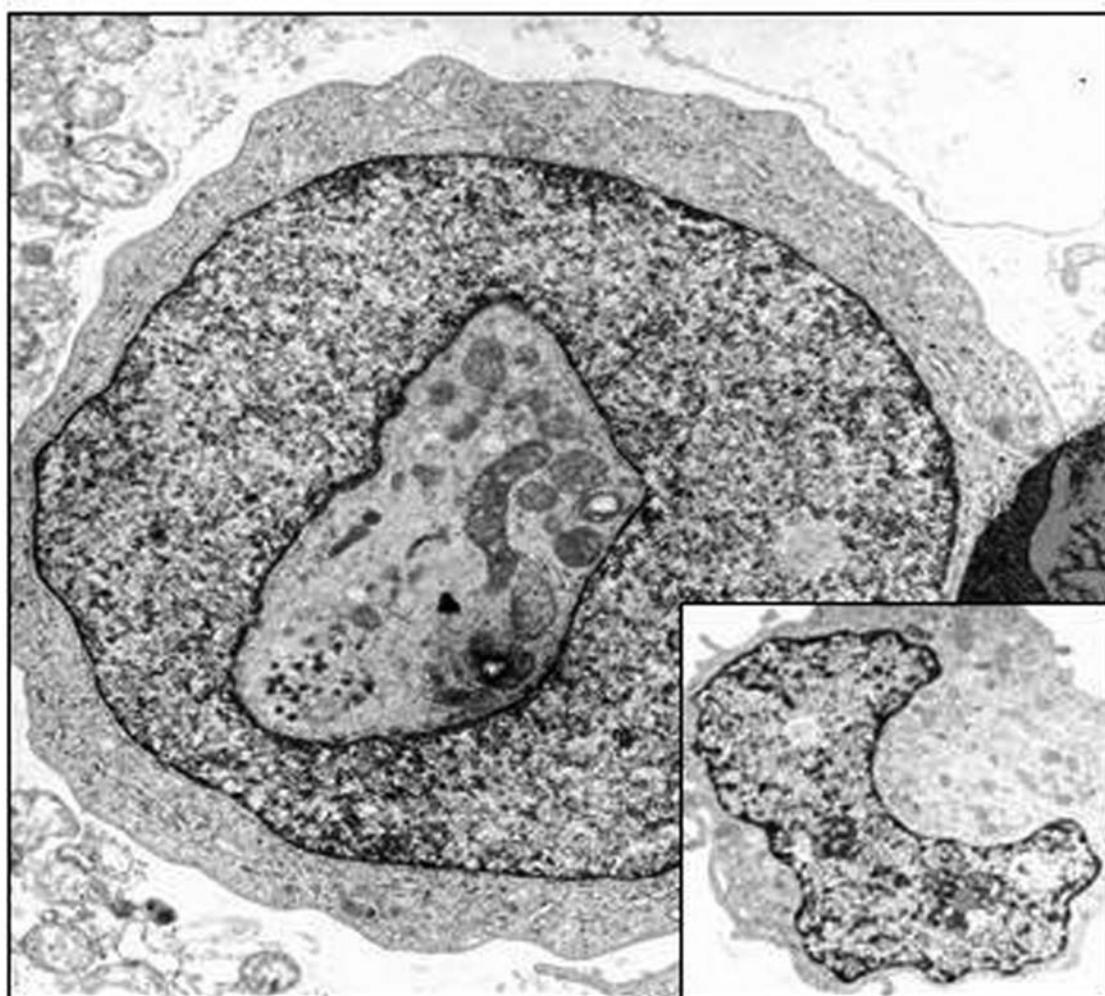


Figure 2. Ultrastructure of a myeloid blast cell with typical cup-like invagination: the electron microscopy shows multiple cell organelles within the *cup*. Mitochondria lysosomes, and parts of endoplasmatic reticulum concentrated within the *cup* were normal in type and structure. Many aggregated filaments (vimentin) were found in the juxtannuclear position.