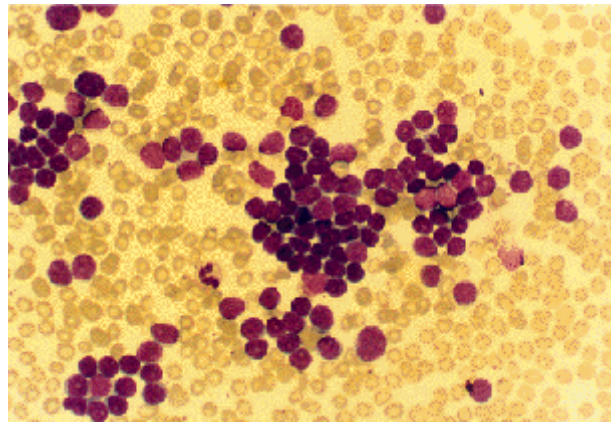
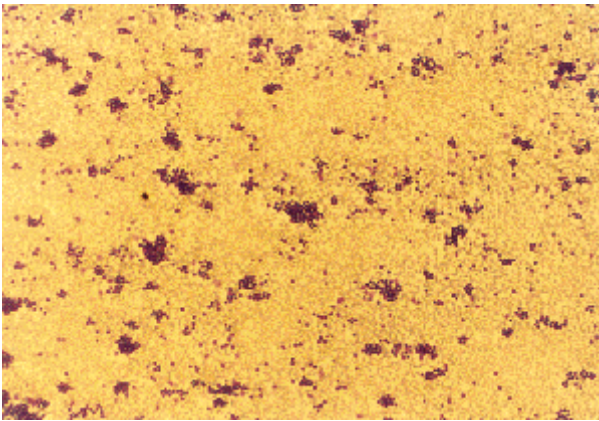


EDTA-dependent lymphocyte clumping

Haematologica 2007; 88(7):e100

A 79-year old man presented with chest pain and fatigue. He was found to have anemia (hemoglobin 8.8 g/dL) and leukocytosis (white blood cell count $244 \times 10^9/L$) with a predominance of lymphocytes (94%). Flow cytometric study and fluorescence in situ hybridization analysis of the peripheral blood lymphocytes were consistent with a diagnosis of mantle cell lymphoma. A peripheral smear obtained from ethylene diamine tetra-acetic acid (EDTA) anticoagulated blood revealed clumping of the lymphocytes. This phenomenon did not occur when smears were made from fresh blood or blood anticoagulated with sodium citrate or



heparin. Although platelet and red blood cell clumping with EDTA has been recognized often, clumping of lymphocytes with EDTA has rarely been reported. As in this case, the majority of the reported cases were patients with lymphoid malignancies.

Justin J. Wenburg,¹ Ronald S. Go²

*¹ Department of Internal Medicine, ²Section of Hematology;
Gundersen Lutheran Medical Center La Crosse, Wisconsin,
U.S.A.*

Correspondence: Ronald S. Go, M.D.

*Gundersen Lutheran Medical Center, Section of Hematology,
Founders Building, La Crosse, Wisconsin*

Tel: (608) 782-7300 Fax: (608) 791-6627

Keywords: EDTA, lymphocyte, mantle cell, clumping