
Granulocyte after treatment with ATG

Haematologica 2007; 88(6):e86

A microphotograph of a peripheral blood human granulocyte showing a segmented nucleus after perfusion of a non-human primate with human blood in a transplantation model. Human blood was treated with anti-thymocyte globulin (Fresenius, Bad Homburg, Germany) to prevent acute rejection and minimize the consequences of Ischemia-Reperfusion Injury. (Giemsa stain x400, DIC-Nomarsky)

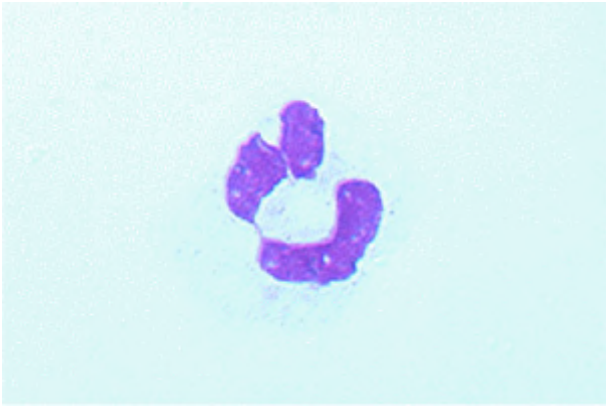


Figure 1.

*A. Beiras-Fernandez, E. Thein
Institute of Surgical Research, 81377 Muenchen. Germany*