

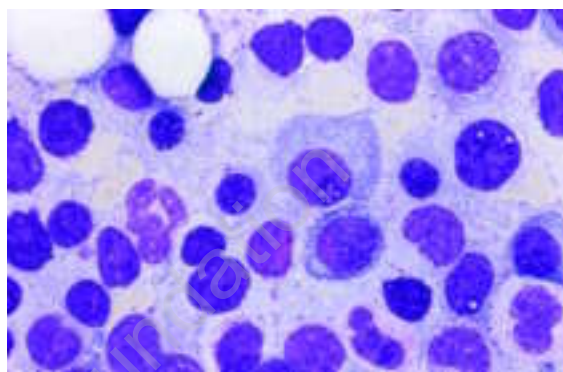


Unique intranuclear inclusion in an IgG kappa multiple myeloma

LOURDES FLORENSA, ITZIAR LARRIBA, SOLEDAD WOESSNER

Escola de Citologia Hematològica Soledad Woessner- IMAS, Hospital del Mar. Barcelona. Laboratori de Citologia Hematològica, Laboratori de Referència de Catalunya, Departament de Patologia, Hospital del Mar, IMAS, IMIM, Barcelona, Spain

Bone marrow plasma cells from a patient already treated for multiple myeloma showed special shaped nuclear inclusions.¹ (Figure 1). Only Dutcher bodies, suggested to be the result of an interaction between the nuclear membrane and the endoplasmic reticulum, have been reported within the nucleus of plasma cells.² A peculiar process of crystallization might have given this cell its artistic appearance.



References

1. Villa Alegre E, Escribano Mora LM, Gabriel L, Velasco Martínez JL, Navarro Navarro JL. Nuclear inclusions in plasma cells. Ultrastructural study. *Sangre* 1986; 31:180-6.
2. Djaldetti M, Lewinski UH. Origin of intranuclear inclusions in myeloma cells. *Scand J Haematol* 1978; 20:200-5.

Correspondence: Lourdes Florensa, M.D. Laboratori de Citologia Hematològica, Hospital del Mar, Passeig Marítim 25-29, 08003 Barcelona. Phone: international +34.93.2211010-ext 1560 – E-mail: e0038@imas.imim.es