



## Fechtner's syndrome

FRANCISCO VELASCO, MARIO ESPINOSA, ANTONIO TORRES

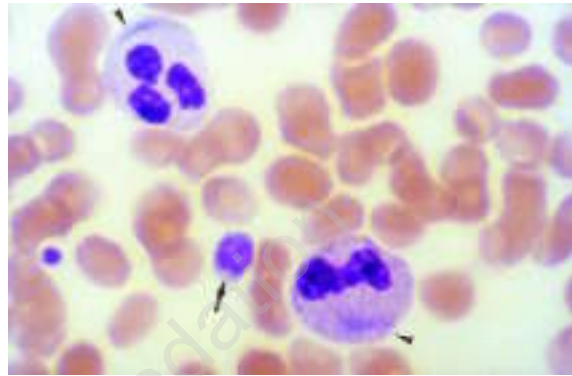
*Hospital Universitario 'Reina Sofia', Servicio de Hematología, Córdoba, Spain*

This is the peripheral blood smear from a 60-year old man diagnosed as having chronic renal failure. Giant spherical platelets (arrow) and pale light-blue spindle-shaped inclusion bodies (arrowheads) were observed in a large number of leukocytes.<sup>1</sup> Audiometry demonstrated bilateral high-tone sensorineural hearing loss. There were no abnormal findings on the ophthalmology examination. The patient's 27-year old daughter showed the same morphologic changes in her leukocytes. One year later, the patient was well and had not required specific treatment.

### References

1. Greinacher A, Mueller-Eckhardt C. Hereditary types of thrombocytopenia with giant platelets and inclusion bodies in the leukocytes. *Blut* 1990; 60:53-60.

*Correspondence: F. Velasco, M.D., Hospital Universitario 'Reina Sofia', Servicio de Hematología, a.vda de Menendez Pinal s/n. 14004, Córdoba, Spain. Phone: international +34-957-217166 - Fax: international +34-957-217166 - E-mail: pmdb@sofia.hrs.sas.cica.es*



**Figure 1.** Peripheral blood smear (May-Grünwald-Giemsa, ×100 in oil immersion).