

A lower-intensity, venetoclax-containing protocol is effective in adults with newly diagnosed mixed-phenotype acute leukemia

Authors

Ying Zhang,^{1,2*} Yi Fan,^{1,2*} Mimi Xu,^{1,2*} Shengli Xue,^{1,2} Xiaowen Tang,^{1,2}
Huiying Qiu,^{1,2} Miao Miao,^{1,2} Suning Chen,^{1,2} Haixia Zhou,^{1,2} Jian Zhang,^{1,2}
Xiaofei Yang,^{1,2} Yang Xu,^{1,2} Xiang Zhang,^{1,2} Depei Wu^{1,2} and Jia Chen^{1,2}

¹National Clinical Research Center for Hematologic Diseases, Jiangsu Institute of Hematology, Jiangsu Key Laboratory of Hematologic Diseases, The First Affiliated Hospital of Soochow University and

²Institute of Blood and Marrow Transplantation, Collaborative Innovation Center of Hematology, Soochow University, Suzhou, China

**YZ, YF and MX contributed equally as first authors.*

Correspondence:

X. ZHANG - lcsy2013@sina.com

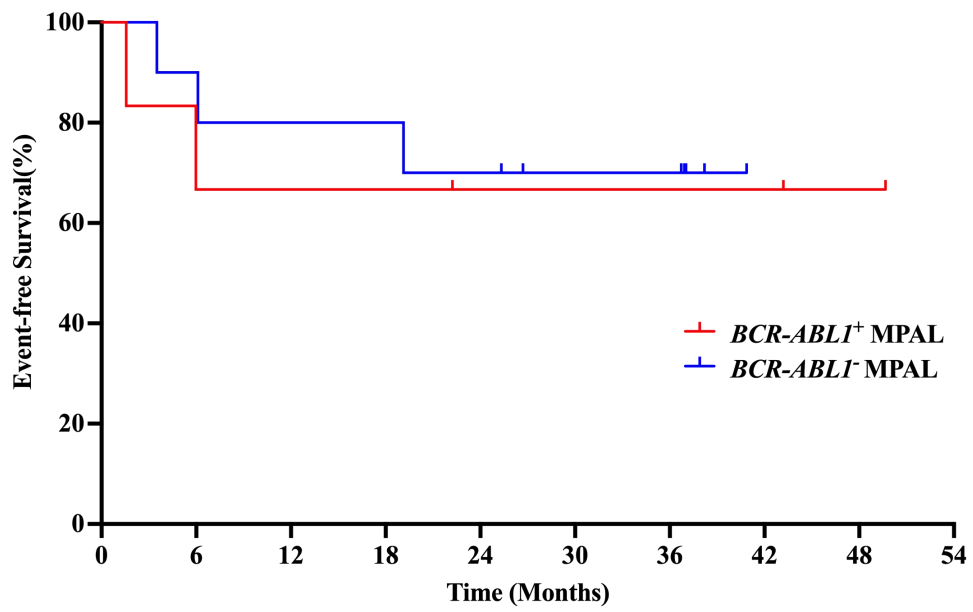
D. WU - drwudepei@163.com

J. CHEN - drchenjia@163.com

<https://doi.org/10.3324/haematol.2025.300161>

Supplementary Table S1 Adverse events

Adverse event	Any grade(n=16)	Grade \geq 3
Non-Hematological toxicity		
Pyrexia	5(31.3%)	0
Fatigue	10(62.5%)	0
Nausea	3(18.8%)	0
Vomiting	1(6.3%)	0
Diarrhea	1(6.3%)	0
Edema	1(6.3%)	0
Lung infection	1(6.3%)	1(6.3%)
Sepsis	1(6.3%)	1(6.3%)
Alanine aminotransferase increased	2(12.5%)	0
Glutamyl transpeptidase increased	2(12.5%)	0
Blood bilirubin increased	1(6.3%)	0
Creatinine increased	2(12.5%)	0
Hypokalemia	1(6.3%)	0
Hematological toxicity		
Anemia	16(100%)	13(81.3%)
Neutropenia	16(100%)	16(100%)
Thrombocytopenia	15(93.8%)	14(87.5%)



Supplementary Figure S1. Kaplan–Meier estimates of the event-free survival. There was no difference in 3.5-year EFS between *BCR-ABL1*⁺ MPAL and *BCR-ABL1*⁻ MPAL patients (P=0.78).