

# Cell-free *BRAF*<sup>V600E</sup> levels predict progression-free survival in children with Langerhans cell histiocytosis treated with dabrafenib and maintenance chemotherapy

## Authors

---

Lei Cui,<sup>1-3</sup> Dong Wang,<sup>2-4</sup> Yun-Ze Zhao,<sup>2-4</sup> Jia-Feng Yao<sup>2-4</sup> Chan-Juan Wang,<sup>2-4</sup> Zi-Jing Zhao,<sup>1-3</sup> Wei-Jing Li,<sup>1-3</sup> Qing Zhang,<sup>1-3</sup> Hong-Yun Lian,<sup>2-4</sup> Hong-Hao Ma,<sup>2-4</sup> Jian Ge,<sup>2-4</sup> Zi-Shi Fang,<sup>2-4</sup> Wen-Qian Wang,<sup>2-4</sup> Jia-Jia Dong,<sup>1-3</sup> Tian-You Wang,<sup>2-4</sup> Zhi-Gang Li<sup>1-3</sup> and Rui Zhang<sup>2-4</sup>

<sup>1</sup>Laboratory of Hematologic Diseases, Beijing Pediatric Research Institute, Beijing Children's Hospital, Capital Medical University, National Center for Children's Health; <sup>2</sup>National Key Discipline of Pediatrics, Capital Medical University; <sup>3</sup>Key Laboratory of Major Diseases in Children, Ministry of Education and <sup>4</sup>Department of Hematology, Hematology center, Beijing Children's Hospital, Capital Medical University, National Center for Children's Health, Beijing, China

Correspondence:

R. ZHANG - ruizh1973@126.com

Z-G. LI - ericlg70@hotmail.com

<https://doi.org/10.3324/haematol.2025.287578>

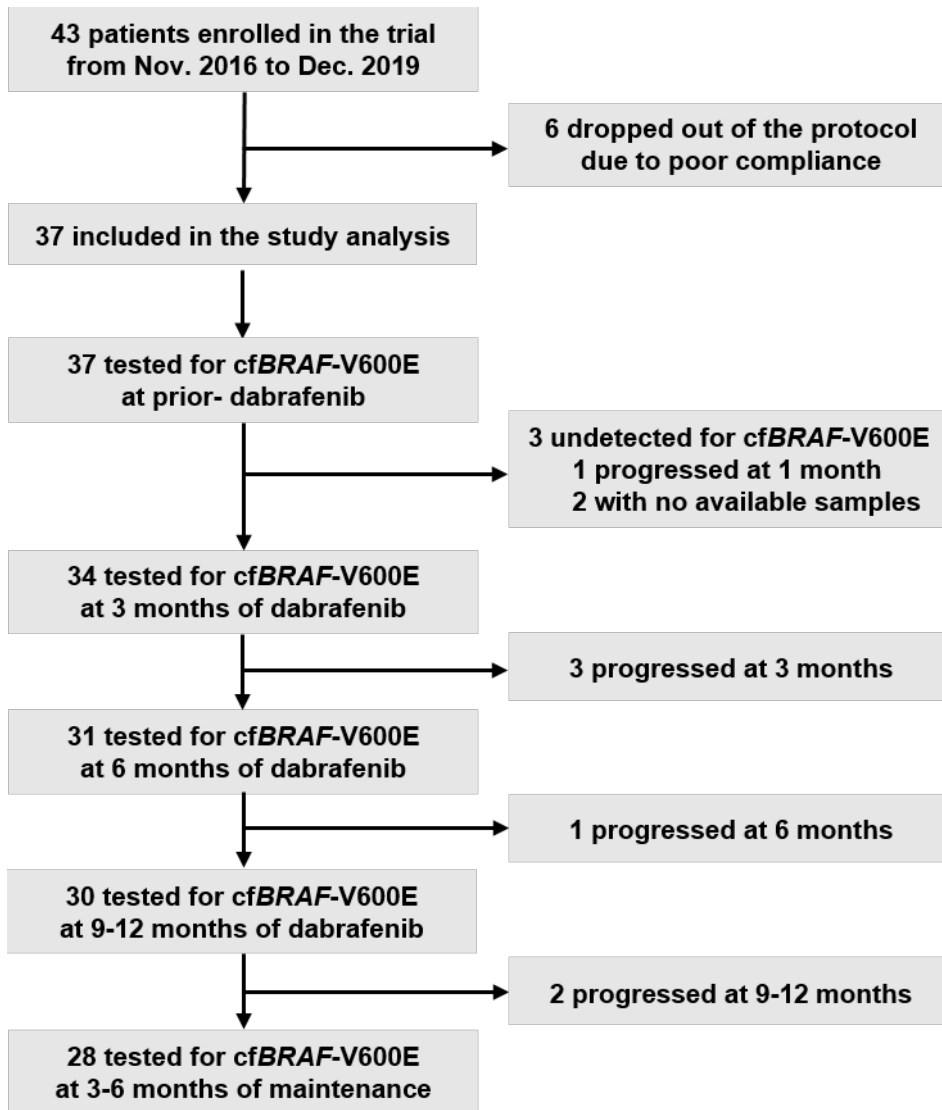
Received: February 11, 2025.

Accepted: November 19, 2025.

Early view: November 27, 2025.

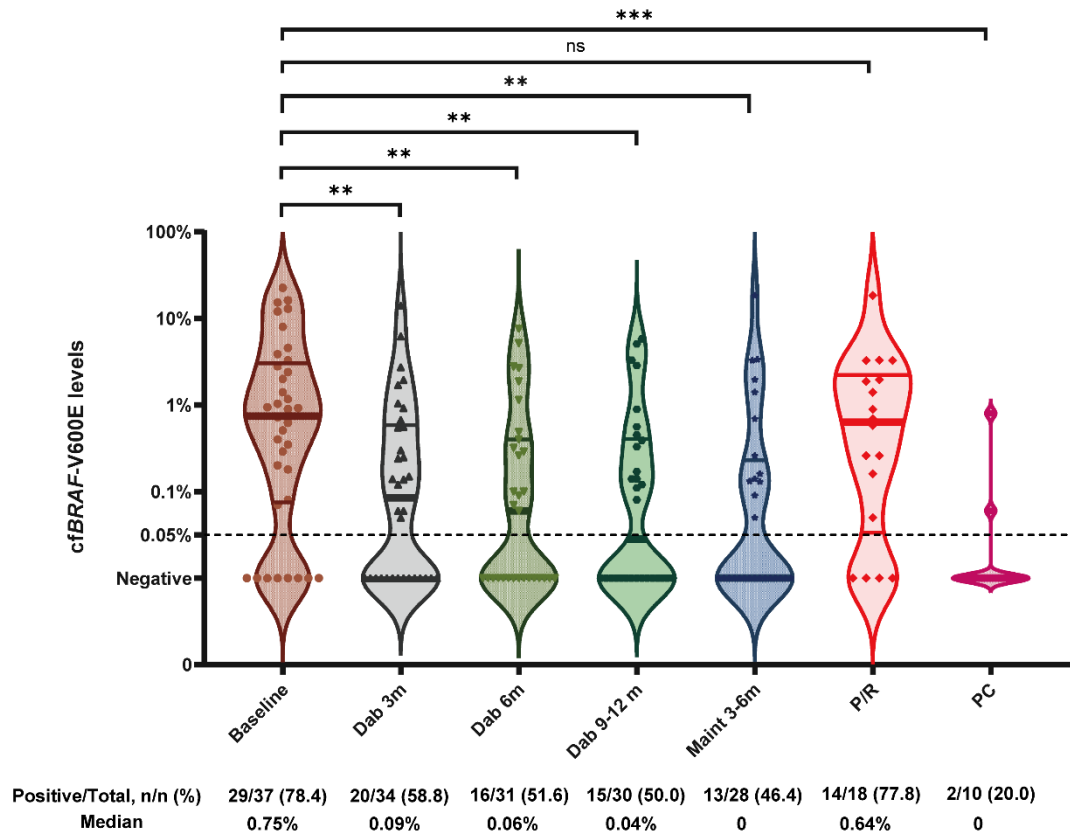
©2026 Ferrata Storti Foundation

Published under a CC BY-NC license 

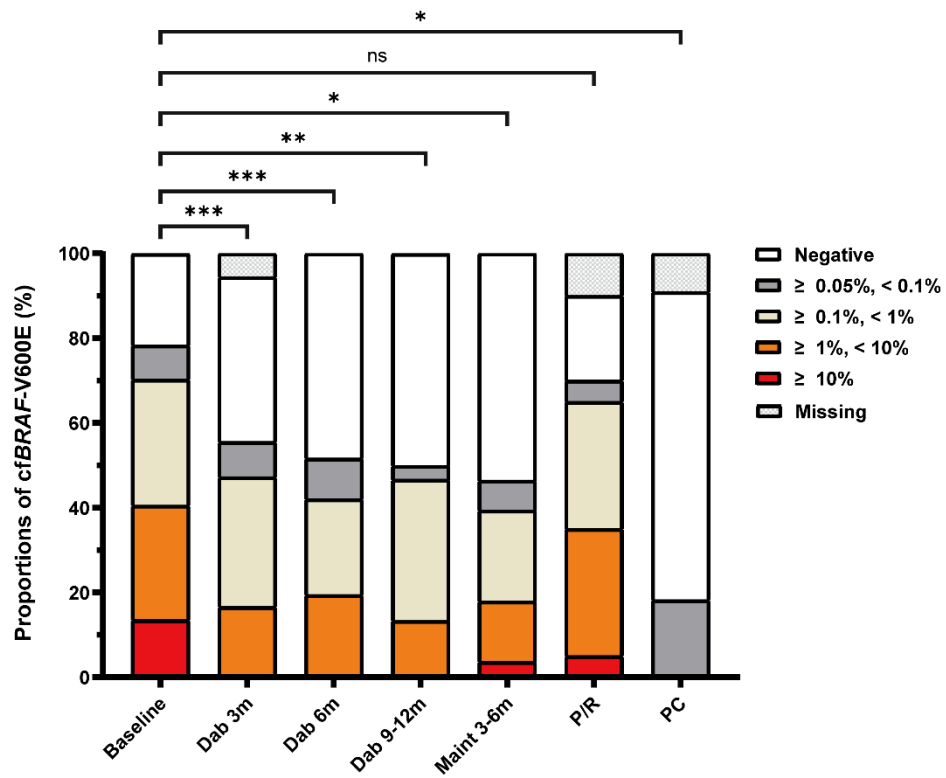


Supplementary Figure S1 The flow diagram of the patients analyzed and excluded.

**A**

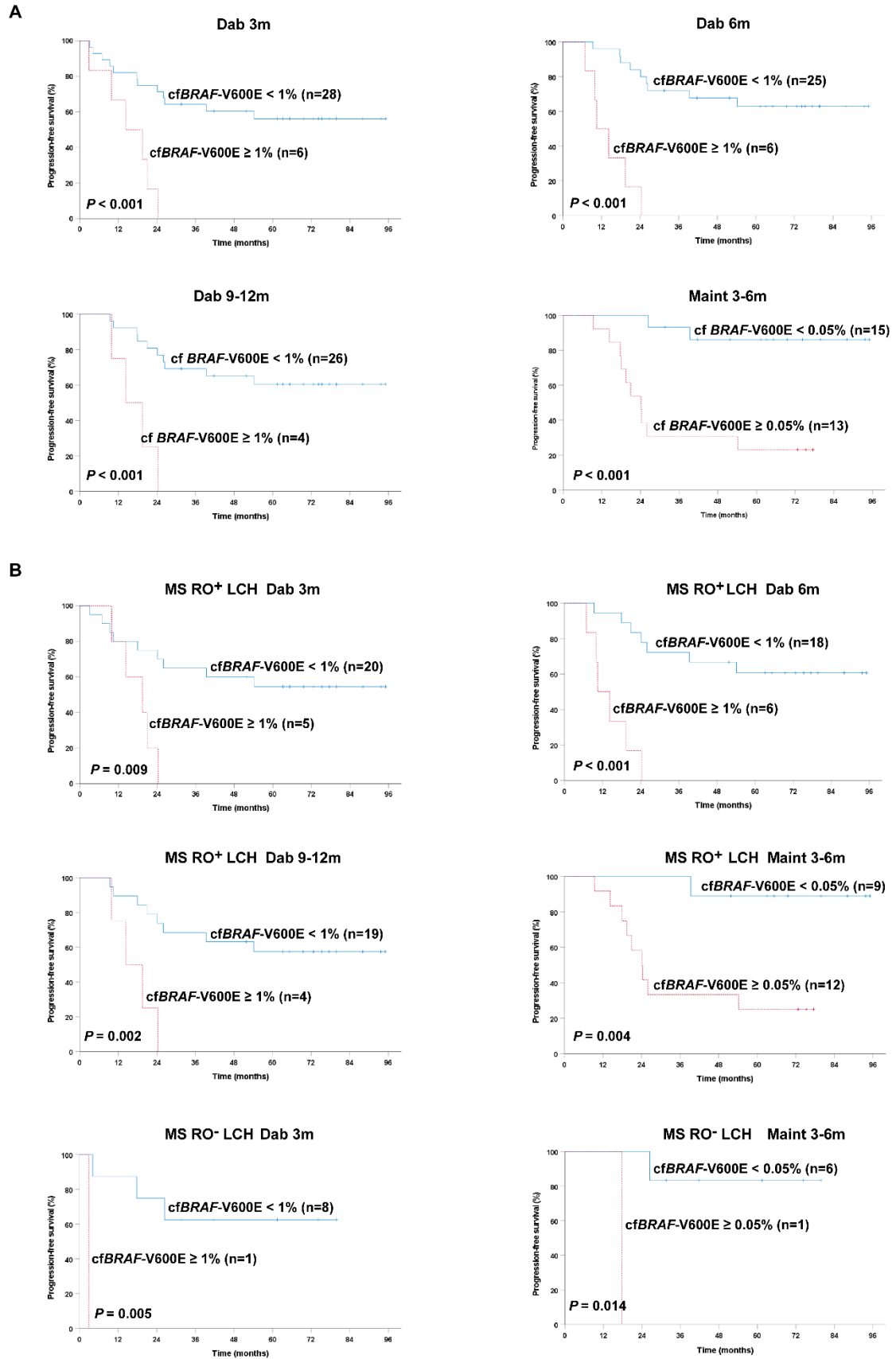


**B**



Supplementary Figure S2 Levels of cfBRAF-V600E during treatment of dabrafenib and

maintenance, and at the time of events. (A) Data is presented as a violin plot, showcasing medians and quantiles. (B) A Bar plot displays the percentages of *cfBRAF*-V600E as a categorical variable. *P* values: \**P* < 0.05, \*\* *P* < 0.01, \*\*\**P* < 0.001, ns, not significant, *P* > 0.05. Abbreviations: Dab, dabrafenib; Maint, maintenance; P/R, progression/relapse; PC, permanent consequence.



Supplementary Figure S3 Kaplan–Meier curves illustrating progression-free survival

(PFS) based on levels of *cfBRAF-V600E*. (A) Comparison of PFS at various time points during treatment. (B) Comparison of PFS in patients with MS RO+ or MS RO- LCH. (Note: The comparison of PFS according to *cfBRAF-V600E* at 6 months and 9-12 months in MS RO- patients is not presented here due to a lack of patients with *cfBRAF-V600E*  $\geq$  1% in this group)