

# Infection risk in 158 patients with relapsed/refractory multiple myeloma treated with bispecific antibodies: a single-center experience

Lorenzo Cani,<sup>1,2</sup> Sara A. Scott,<sup>3</sup> Danielle Roberts,<sup>2</sup> Nisha S. Joseph,<sup>2</sup> Craig C. Hofmeister,<sup>2</sup> Vikas A. Gupta,<sup>2</sup> Madhav V. Dhodapkar,<sup>2</sup> Sagar Lonial,<sup>2</sup> Ajay K. Nooka<sup>2</sup> and Jonathan L. Kaufman<sup>2</sup>

<sup>1</sup>Division of Hematology, AOU Città della Salute e della Scienza di Torino, University of Torino and Department of Molecular Biotechnology and Health Sciences, Torino, Italy; <sup>2</sup>Winship Cancer Institute of Emory University, Atlanta, GA, USA and <sup>3</sup>Emory Healthcare, Atlanta, GA, USA

**Correspondence:** L. Cani  
[lorenzocani1@outlook.it](mailto:lorenzocani1@outlook.it)

**Received:** May 21, 2025.

**Accepted:** August 20, 2025.

**Early view:** September 4, 2025.

<https://doi.org/10.3324/haematol.2025.288187>

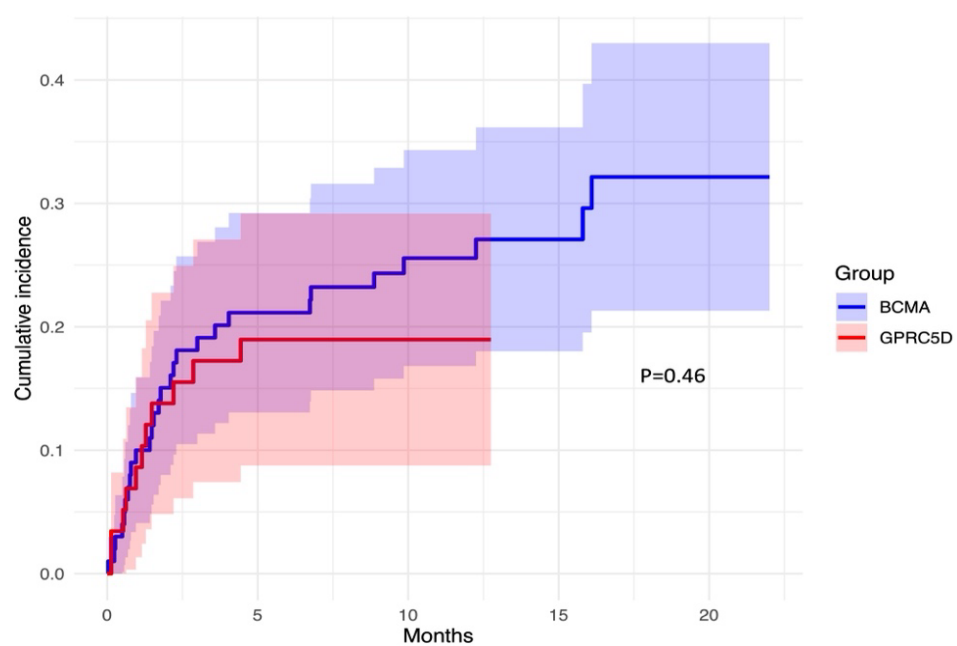
©2026 Ferrata Storti Foundation

Published under a CC BY-NC license



## SUPPLEMENTAL

**Figure S1.** Cumulative incidence of first grade  $\geq 3$  infection in patients treated with BCMA and GPRC5D-directed agents.



**Abbreviations.** BCMA, B-cell maturation antigen; GPRC5D, G-protein-coupled receptor family C group 5 member D.