

The impact of age on survival and excess mortality after autologous hematopoietic cell transplantation in newly diagnosed multiple myeloma patients

Shohei Mizuno,¹ Luuk Gras,² Laurien GA Baaij,² Linda Koster,² Anita D’Souza,³ Parameswaran N. Hari,⁴ Noel Estrada-Merly,⁵ Wael Saber,⁶ Andrew J. Cowan,⁷ Minako Iida,¹ Shinichiro Okamoto,⁸ Hiroyuki Takamatsu,⁹ Koji Kawamura,¹⁰ Yoshihisa Kodera,¹ Nada Hamad,¹¹ Bor-Sheng Ko,¹² Christopher Liam,¹³ Kim Wah Ho,¹⁴ Ai Sim Goh,¹⁵ Tan Sui Keat,¹⁵ Alaa M. Elhaddad,¹⁶ Ali Bazarbachi,¹⁷ Brig Qamar Un N. Chaudhry,¹⁸ Rozan Alfar,¹⁹ Mohamed Amine Bekadja,²⁰ Malek Benakli,²¹ Cristobal Augusto Frutos Ortiz,²² Eloisa Riva,²³ Estelle Verburch,²⁴ Sebastian Galeano,²⁵ Francisca Bass,²⁶ Hira Mian,²⁷ Arleigh McCurdy,²⁸ Feng Rong Wang,²⁹ Daniel Neumann,³⁰ Mickey Boon Chai Koh,³¹ John A. Snowden,³² Stefan Schönland,³³ Donal P. McLornan,³⁴ Patrick J. Hayden,³⁵ Anna Maria Sureda Balari,³⁶ Hildegard T. Greinix,³⁷ Mahmoud Aljurf,³⁸ Yoshiko Atsuta,^{1,39} Damiano Rondelli,⁴⁰ Dietger W. Niederwieser^{1,41,42#} and Laurent Garderet^{43#} for the Worldwide Network of Blood and Marrow Transplantation

¹Aichi Medical University School of Medicine, Nagakute, Japan; ²EBMT Leiden Study Unit, Leiden, the Netherlands; ³Division of Hematology/Oncology, Department of Medicine, Medical College of Wisconsin, Milwaukee, WI, USA; ⁴Department of Medicine, Medical College of Wisconsin, Milwaukee, WI, USA; ⁵BMT and Cellular Therapy Program, Department of Medicine, Medical College of Wisconsin, Milwaukee, WI, USA; ⁶CIBMTR® (Center for International Blood and Marrow Transplant Research), National Marrow Donor Program/Be The Match, Minneapolis, MIN, USA; ⁷Clinical Research Division, Fred Hutchinson Cancer Center, Seattle, WA, USA; ⁸Keio University School of Medicine, Tokyo, Japan; ⁹Kanazawa University, Kanazawa, Japan; ¹⁰Tottori University Hospital, Yonago, Japan; ¹¹Hematology Department, The Kinghorn Cancer Center, St Vincent’s Hospital, Darlinghurst, Sydney, New South Wales, Australia; ¹²National Taiwan University Hospital, Taipei, Taiwan; ¹³Hospital Sultanah Aminah, Johor Bahru, Malaysia; ¹⁴Hospital Ampang, Ampang, Malaysia; ¹⁵Hospital Pulau Pinang, Pinang, Malaysia; ¹⁶Cairo University, Cairo, Egypt; ¹⁷Bone Marrow Transplantation Program, Department of Internal Medicine, American University of Beirut, Beirut, Lebanon; ¹⁸Armed Forces Institute of Transplantation, Rawalpindi, Pakistan; ¹⁹King Hussein Cancer Center, Amman, Jordan; ²⁰Établissement Hospitalier Universitaire 1 et Novembre, Ahmed Benbella 1 University, Oran, Algeria; ²¹Pierre and Marie Curie Center, Algiers, Algeria; ²²Instituto de Prevision Social, Asuncion, Paraguay; ²³Clinical Hospital Dr. Manuel Quintela De Clinicas, Montevideo, Uruguay; ²⁴Groote Schuur Hospital, Hospital Road, Cape Town, South Africa; ²⁵British Hospital, Montevideo, Uruguay; ²⁶Intensive Hematology Unit, Hospital Del Salvador, Santiago, Chile; ²⁷McMaster University, Hamilton, Canada; ²⁸The Ottawa Hospital, Ottawa, Ontario, Canada; ²⁹Peking University, Peking, China; ³⁰IMISE, University of Leipzig, Leipzig, Germany; ³¹City St Georges, University of London and St Georges University Hospitals, London, UK; ³²Department of Hematology, Sheffield Teaching Hospitals NHS Foundation Trust, Sheffield, UK; ³³University Hospital Heidelberg, Heidelberg, Germany; ³⁴University College London Hospitals NHS Trust, London, UK; ³⁵Department of Medicine, Trinity College Dublin, St. James’s Hospital, Dublin, Ireland; ³⁶Universitat de Barcelona, Barcelona, Spain; ³⁷Medical University Graz, Graz, Austria; ³⁸King Faisal Specialist Hospital and Research Center, Riyadh, Saudi Arabia; ³⁹Japanese Data Center for Hematopoietic Cell Transplantation, Nagakute, Japan; ⁴⁰Division of Hematology/Oncology, University of Illinois at Chicago – UI Health, Chicago, IL, USA; ⁴¹University of Leipzig, Leipzig, Germany; ⁴²Penn Medicine, Philadelphia, PA, USA and ⁴³Sorbonne Université, INSERM, Centre de Recherche Saint-Antoine, Assistance Publique-Hôpitaux de Paris, Hôpital Pitié Salpêtrière, Service d’Hématologie, Paris, France


#DWN and LG contributed equally as senior authors.

Correspondence: S. Mizuno
shohei@aichi-med-u.ac.jp

Received: April 17, 2025.
Accepted: July 23, 2025.
Early view: July 31, 2025.

<https://doi.org/10.3324/haematol.2025.288041>

©2026 Ferrata Storti Foundation
Published under a CC BY-NC license



Abstract

Despite the availability of novel agents, autologous hematopoietic cell transplantation (auto-HCT) remains the standard of care in newly diagnosed multiple myeloma (MM) patients. The impact of age on overall survival (OS), progression-free survival (PFS), relapse incidence, non-relapse mortality (NRM), and excess mortality (taking account of general population mortality) was investigated using information on 61,797 MM patients transplanted between 2013 and 2017. The median age at auto-HCT was 60.8 (range, 18.1–83.2) years of whom 2.0% were 18–39 years, 68.9% 40–64 years, 21.8% 65–69 years, 6.5% 70–74 years, and 0.8% ≥ 75 years of age, respectively. The corresponding OS probabilities at 3 years were 85.9%, 82.8%, 81.1%, 78.4%, and 74.8%, respectively ($P < 0.001$). Excess mortality cumulative incidences were 13.1%, 15.0%, 14.6%, 15.0%, and 14.1% at 3 years, respectively ($P = 0.67$). In multivariable analyses, older age was a significant risk factor for OS, PFS, and NRM but not for excess mortality or relapse risk. Our results indicate that advanced age alone should not preclude the use of auto-HCT in patients with MM.

Introduction

Multiple myeloma (MM) has a worldwide prevalence that continues to increase, with over 175,000 new cases reported in 2020.¹ The median age at diagnosis is approximately 70 years; MM is rare ($< 1\%$ of all cases) in those less than 40 years of age according to the limited available information,^{2–5} but has a higher incidence in older individuals.^{6–8} For newly diagnosed, transplant eligible MM patients, induction therapy with proteasome inhibitors and immunomodulatory drugs followed by autologous hematopoietic cell transplantation (auto-HCT) is considered the standard of care.^{9–12} Due to improvements in supportive care, auto-HCT activities in MM have gradually been extended to older patients¹³ and outcomes have continued to improve. These results are expected to improve further with the addition of anti-CD38 antibodies to induction therapy leading to improved response rates and progression-free survival (PFS).^{3,14,15} Age is considered to be an important factor when choosing therapeutic strategies in general and especially in MM, but no age effect (< 65 and ≥ 65 years of age) has been reported in studies to date.^{16–18} The impact of age on outcomes in the context of known risk factors and global differences in disease management remains largely unexplored, especially in large population cohorts and in the context of excess mortality.

Using a large worldwide database, we have for the first time analyzed the associations between age at auto-HCT and both known and currently unknown (including conditioning regimens) risk factors on outcome after auto-HCT.

Methods

The retrospective study was conducted by the Worldwide Network for Blood and Marrow Transplantation, utilizing data from its member societies and international or regional HCT registries. The study included patients with MM who underwent upfront auto-HCT between 2013 and 2017, were ≥ 18 years of age at auto-HCT. The *Online*

Supplementary Appendix provides an overview of the registries that contributed data. The primary endpoint was overall survival (OS) and secondary endpoints were PFS, relapse incidence (RI, either progression or relapse), non-relapse mortality (NRM), and excess mortality. The study was approved by the Institutional Review Board of Aichi Medical University.

Statistical methods

Baseline clinical, demographic, and transplantation-related characteristics were grouped according to the following age cohorts: 18–39, 40–64, 65–69, 70–74, and ≥ 75 years old (measured at auto-HCT), and were reported as median, range, and interquartile ranges (IQR) for continuous variables. Differences between age groups were assessed using P values obtained with the χ^2 test for categorical variables and the Mann-Whitney U-test for continuous data. Median follow-up after auto-HCT and 95% confidence intervals (CI) were calculated using the reverse Kaplan-Meier method. OS was calculated as the time from auto-HCT to death from any cause, PFS as the time from auto-HCT to death, relapse or progression, RI as time to relapse (progression or relapse) after auto-HCT, and NRM as death without evidence of relapse. In analyses of OS, PFS, RI, and NRM, events occurring more than 3 years post auto-HCT were artificially censored. The probability of OS and PFS was estimated based on the Kaplan-Meier method and differences were analyzed using the log-rank test. Cumulative RI and NRM were modeled using the crude cumulative incidence estimator and compared between groups with Gray's test. Multivariable analyses were performed using Cox (cause-specific) proportional hazards models. Details on variables included in the models can be found in the *Online Supplementary Appendix*. A relative survival model was used to estimate the proportion of deaths in our cohort that could be attributed to general population causes (population mortality) *versus* the proportion related to MM, including auto-HCT and other treatment (excess mortality).^{16–18} Patients from countries with population mortality tables available in the Human Mortality Database (<http://>

www.mortality.org/) were matched to the general population cohort by age, sex, country, and year of auto-HCT. The excess mortality hazard was defined as the difference between the observed hazard in the patient with MM and in the matched general population cohort, assuming that the life expectancy of the patients with MM is similar to that of the general population apart from their disease

and its treatment. These hazards were used to calculate the cumulative incidences of population mortality and excess mortality, which add up to all observed mortality. To estimate the association between age groups and excess mortality adjusted for measured confounders, we used Cox proportional hazards model for the excess hazard of death. All statistical tests were two-sided, and significance

Table 1. Patient characteristics at diagnosis and at autologous hematopoietic cell transplantation.

Characteristics	Age at auto-HSCT, years					
	Total	18-39	40-64	65-69	70-74	≥75
All Patients, N (%)	61,797 (100)	1,252 (2.0)	42,570 (68.9)	13,452 (21.8)	4,003 (6.5)	520 (0.8)
Sex, %						
Male	58.0	59.7	57.5	57.4	62.7	66.0
Region, %						
Europe	60.6	59.2	62.1	61.0	48.7	24.6
USA	26.2	25.3	24.1	26.4	43.3	69.2
Australia/New Zealand	5.1	4.2	4.9	5.8	5.4	4.2
Japan	5.1	4.6	5.4	5.1	1.8	1.2
Eastern Mediterranean	0.9	2.8	1.1	0.3	0.0	0.2
Taiwan	0.8	1.6	1.0	0.6	0.2	0.6
Latin America	0.5	1.3	0.7	0.3	0.2	-
Ottawa, Canada	0.3	0.2	0.3	0.4	0.3	-
Malaysia	0.3	0.7	0.3	0.1	-	-
Beijing, China	0.1	0.1	0.1	0.1	0.0	-
M-protein isotype, %						
IgG	54.0	50.4	53.5	55.5	56.1	55.4
IgA	18.6	13.1	18.4	19.6	19.7	20.4
Light chain	24.4	31.9	25.0	22.6	21.7	20.8
Other Ig	1.3	1.9	1.3	1.1	1.1	1.8
Non-secretory	1.7	2.8	1.8	1.2	1.4	1.6
Missing: N=1,332	2.2	2.5	2.2	2.2	1.5	1.2
ISS						
I	38.0	43.9	39.0	35.8	34.6	33.0
II	34.9	31.3	34.1	36.9	36.5	38.4
III	27.1	24.8	27.0	27.3	28.9	28.7
Missing: N=28,111	45.5	43.1	46.2	45.1	41.4	32.3
Cytogenetic risk, %						
Standard	69.7	74.6	70.2	69.2	65.6	64.5
High	30.3	25.4	29.8	30.8	34.4	35.5
Missing: N=34,292	55.5	54.2	56.6	55.2	48.2	34.4
At auto-HCT						
Interval diagnosis HCT, months, median (IQR)	7.1 (5.5-9.9)	6.7 (5.2-9.2)	7.0 (5.5-9.9)	7.2 (5.6-10.1)	7.0 (5.5-9.6)	6.9 (5.3-9)
Year of auto-HCT, %						
2013	18.3	21.5	19.3	16.1	15.1	12.9
2014	18.9	18.7	19.5	18.1	16.3	15.6
2015	19.9	18.8	20.1	19.4	19.1	21.5
2016	21.0	20.0	20.3	22.6	22.8	20.6
2017	21.9	21.1	20.8	23.9	26.7	29.4
HCT-CI risk group, %						
Low risk: 0	51.8	62.0	54.2	48.8	39.0	25.7
Intermediate risk: 1-2	25.0	23.6	25.0	24.7	26.4	24.8
High risk: ≥3	23.2	14.4	20.8	26.5	34.6	49.6
Missing: N=17,486	28.3	30.0	29.8	26.4	20.8	12.3
KPS, %						
100	27.8	36.6	29.6	25.2	17.6	14.5
≤90	72.2	63.4	70.4	74.8	82.4	85.5
Missing: N=6,012	9.7	9.1	9.9	10.2	7.7	4.8

Continued on following page.

Characteristics	Age at auto-HSCT, years					
	Total	18-39	40-64	65-69	70-74	≥75
Disease status, %						
CR	19.2	21.9	19.8	18.0	15.7	14.3
VGPR	38.0	36.1	37.8	38.7	39.0	38.0
PR	36.2	34.6	35.8	37.0	37.9	36.6
MR/SD	4.7	5.1	4.6	4.6	5.5	7.6
Refractory/progression	1.8	2.0	1.8	1.6	1.6	2.9
Untreated	0.2	0.2	0.2	0.2	0.2	0.6
Missing: N=1,379	2.2	3.4	2.2	2.4	2.0	0.8
Conditioning regimen, %						
Mel 200 mg/m ²	70.2	78.4	75.4	63.2	40.6	28.3
Mel 140 mg/m ²	12.0	5.5	6.8	17.8	43.6	60.7
Mel unknown dose	14.7	12.2	14.6	16.3	12.8	8.5
Other conditioning	3.1	3.9	3.2	2.7	3.0	2.5
Missing: N=386	0.6	0.6	0.7	0.5	0.5	0.2
Tandem auto-HCT						
No	93.1	91.2	92.4	94.8	96.1	97.3
Yes	6.9	8.8	7.6	5.2	3.9	2.7
Missing: N=75	0.1	0.2	0.1	0.1	0.0	-
Maintenance therapy						
Yes	88.8	84.1	89.0	89.7	87.2	83.9
None	11.2	15.9	11.0	10.3	12.8	16.1
Missing: N=54,926	88.9	84.5	88.6	89.8	90.2	89.2

ISS: International Scoring System; auto-HCT: autologous hematopoietic cell transplantation; HCT: hematopoietic cell transplantation-specific comorbidity index; IQR: interquartile range; KPS: Karnofsky performance status; CR: complete response; VGPR: very good partial response; PR: partial response; MR: minor response; SD: stable disease; Mel: melphalan; Ig: immunoglobulin. High cytogenetic risk was defined as: deletion 17p, and/or t(4;14), and/or t(14;16); in Europe deletion 17p, and/or t(4;14), and/or t(14;16) and/or t(14;20) and/or hypodiploid and/or 1q gain and/or deletion 1p. Percentages for each variable are calculated excluding missing values.

was defined as $P < 0.05$. All analyses were performed in R version 4.4.2¹⁹ using ‘survival’, ‘cmprsk’, ‘prodlm’, ‘relsurv’ and ‘pspline’ packages. No adjustment for multiple comparisons were made.

Results

Patient characteristics

A total of 61,797 patients from 61 countries of whom 60.6% were from Europe, 26.2% from the USA, 5.1% each from Australia/New Zealand and Japan, 0.9% from the Eastern Mediterranean Region (EMRO), 0.8% from Taiwan, 0.5% from Latin America, 0.3% each from Ottawa and Malaysia, and 0.1% from Beijing were included in this analysis (Table 1). Overall, the median age at auto-HCT was 60.8 (range, 18.1-83.2) years. A total of 2.0% were patients aged 18-39 years, 68.9% 40-64 years, 21.8% 65-69 years, 6.5% 70-74 years, and 0.8% ≥75 years (Table 1). The median age varied considerably between regions and countries and was lowest in the EMRO (53.6 years) and highest in Ottawa (62.2 years; Figure 1). EMRO, Latin America, and Malaysia had the higher percentage of younger (<40 years) patients (6.4%, 4.7%, and 5.3%, respectively) as compared with Europe, USA, Australia/New Zealand, Japan, Ottawa, and Beijing (2.0%, 2.0%, 1.7%, 1.8%, 1.6%, and 1.4%, respectively) (Table

1; Figure 1; *Online Supplementary Figure S1*). Accordingly, the percentage of patients aged ≥65 years was lower in the former group of regions (6.9%, 12.7%, and 10.1%, respectively) as compared to the latter group of regions (27.4%, 34.8%, 32.2%, 24.5%, 36.1%, and 27.8%, respectively). The highest patient age in each region ranged from 69.4 years (Malaysia) to 83.2 years (USA and EMRO) and most of the patients aged ≥75 years (69.2%) were reported from the USA (Figure 1). Auto-HCT activity increased annually from 11,330 in 2013 to 13,530 in 2017 mainly due to more patients ≥65 years who constituted 25.0% of the total in 2013 and 32.7% in 2017 (Figure 2). As expected, immunoglobulin (Ig)G was the most frequent isotype (54.0%), followed by light chain (24.4%) and IgA (18.6%). A higher percentage of patients with IgG and IgA and a lower percentage with light chain isotypes were observed in the older age groups (Table 1). Younger patients were more likely to have International Staging System (ISS) stage I disease (43.9%, 39.0%, 35.8%, 34.6%, and 33.0% for age groups 18-39, 40-64, 65-69, 70-74, and ≥75, respectively) and standard-risk cytogenetic profiles (74.6%, 70.2%, 69.2%, 65.6%, and 64.5%, respectively). Auto-HCT was performed at a median of 7.1 (IQR, 5.5-9.9) months after diagnosis without significant differences according to age. The percentage of patients with high risk HCT-specific comorbidity index (HCT-CI) scores was 14.4% in the youngest cohort and 49.6% in the

oldest age cohort. Similarly, the percentage of patients with Karnofsky performance status (KPS) ≤ 90 ranged from 63.4% in the youngest to 85.5% in the oldest age group. In addition, the percentage of patients in complete response (CR) was higher in the youngest (21.9%) when compared to the oldest (14.3%) cohort. Melphalan 200 mg/m² was the most commonly used conditioning regimen across all ages (70.2%) but was replaced by melphalan 140 mg/m² in the older groups (78.4%, 75.4%, 63.2%, 40.6%, and 28.3% for 200 mg/m², respectively). Tandem auto-HCT was given in

6.9% of patients and information on maintenance therapy was only available in 11.1% of patients. The most commonly used maintenance regimens in the available information were lenalidomide in Europe (58.4%), in the USA (57.9%), in Japan (46.2%), and in the EMRO (61.7%), immunomodulatory drugs and proteasome inhibitors (67.7%) in Taiwan, thalidomide in Latin America (38.7%) and in Beijing (44.3%) and no maintenance in Ottawa (55.4%) and in Malaysia (67.3%). Maintenance therapy was not included in the multivariable analysis.

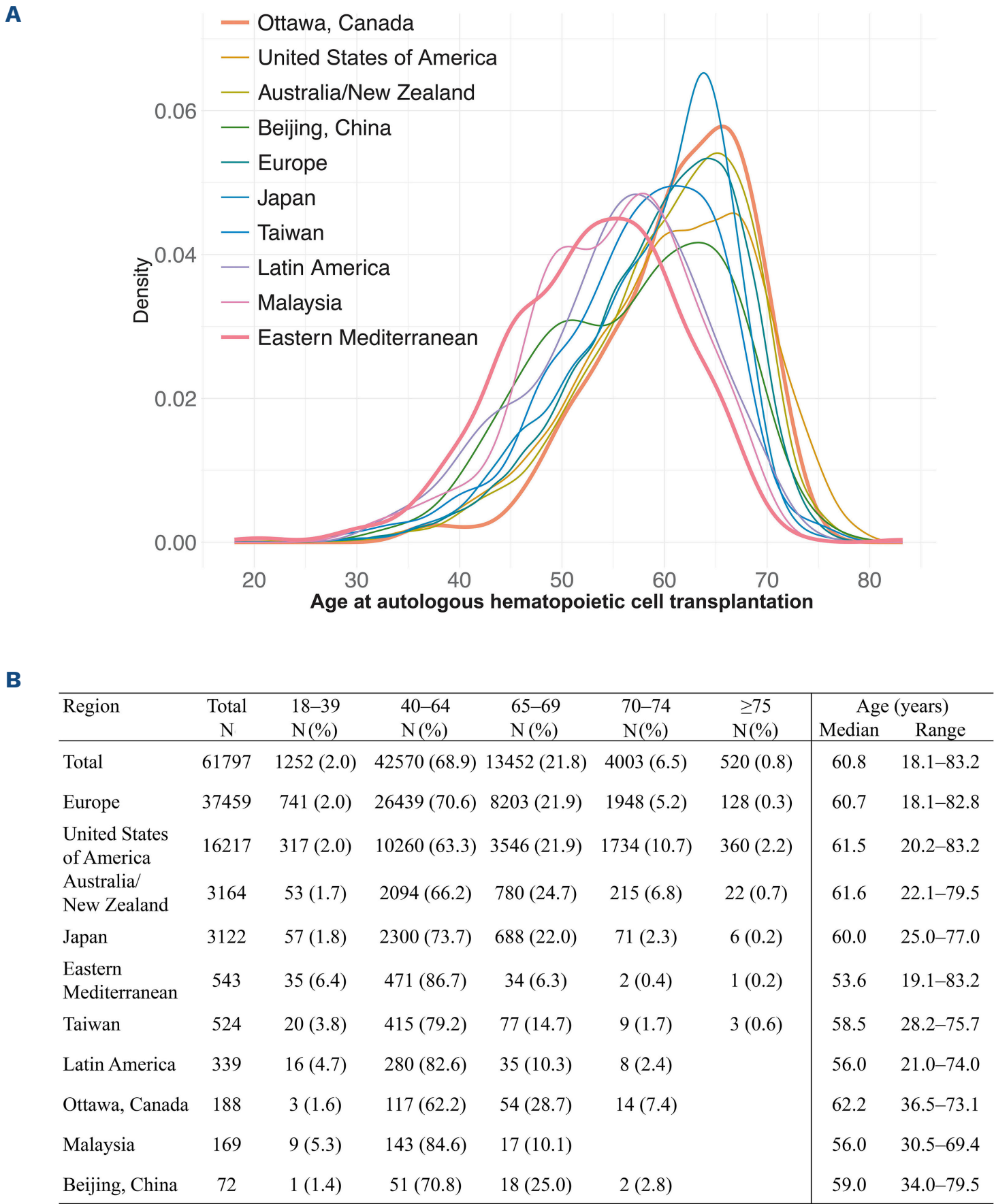


Figure 1. Age distribution at autologous hematopoietic cell transplantation according to region (A and B).

Transplant outcome

The median OS was 90.2 (95% confidence interval [CI]: 88.2-93.6) months with a median follow-up of 41 (IQR, 19-60) months (*Online Supplementary Table S1*). OS 3 years post-transplant declined with increasing age at auto-HCT and ranged from 85.9% (95% CI: 83.6-88.2%) in the age group 18-39 years to 74.8% (95% CI: 70.8-78.8%) in those ≥ 75 years (Figure 3A; $P<0.001$). Similarly, older age was associated with shorter PFS at 3 years ($P<0.001$): 55.8% (95% CI: 52.5-59.1%), 51.3% (95% CI: 50.7-51.8%), 49.6% (95% CI: 48.5-50.6%), 47.3% (95% CI: 45.5-49.1%), and 44.9% (95% CI: 40.3-49.6%) in each age group, respectively (Figure 3B; $P<0.001$). The cumulative RI at 3 years was not significantly associated ($P=0.18$) with older age and was 41.8% (95% CI: 38.5-45.0%), 45.8% (95% CI: 45.3-46.4%), 46.2% (95% CI: 45.2-47.2%), 47.4% (95% CI: 45.6-49.2%), and 47.4% (95% CI: 42.7-52.1%), respectively (Figure 3C). The cumulative incidence of NRM increased with age ($P<0.001$) being 0.5%, 1.3%, 2.1%, 2.2%, 3.8% at 1 year and 2.4%, 2.9%, 4.3%, 5.3%, 7.6% at 3 years, respectively (Figure 3D; *Online Supplementary Table S1*).

Multivariable analysis

In multivariable analysis, age older than 64 years was significantly associated with reduced OS and PFS ($P<0.001$ and $P=0.001$, respectively; Table 2). This was due to increased NRM ($P<0.001$) and not to a higher risk of relapse ($P=0.19$). In patients younger than 40 years, borderline superior OS ($P=0.05$), but not PFS ($P=0.24$), relapse ($P=0.25$) or NRM ($P=0.34$) compared to patients aged 40-64 years was detected. Female sex was also associated with improved OS

($P<0.001$), PFS ($P<0.001$) and a lower risk of both relapse ($P<0.001$) and NRM ($P=0.04$). A more recent year of auto-HCT was significantly associated with improved OS (hazard ratio [HR] =0.94; 95% CI: 0.92-0.96), PFS (HR=0.95; 95% CI: 0.94-0.96) and RI (HR=0.95; 95% CI: 0.94-0.96) per year later even though there was no such association with NRM ($P=0.45$). Variables associated with worse OS, PFS and a higher risk of relapse included an isotype other than IgG, a high-risk cytogenetic profile, a higher ISS, a poorer disease status at auto-HCT, a KPS ≤ 90 and a lower melphalan dose of 140 mg/m² compared to 200 mg/m². The most adverse association with OS and PFS was seen in patients with relapse/progression at auto-HCT (HR compared to CR 4.84 and 3.49, respectively) and, in descending order, ISS III (HR compared to ISS I 2.23 and 1.59), a high-risk cytogenetic profile (HR compared to standard-risk 2.09 and 1.59), minor response/stable disease at auto-HCT (HR compared to CR 1.85 and 2.30), ISS II (HR compared to ISS I 1.51 and 1.25), age at auto-HCT ≥ 75 years (HR compared to 40-64 years 1.45 and 1.20) and other Ig isotypes (HR compared to IgG 1.49 and 1.20; Table 2). The highest risk factors for RI were relapse/progression (HR compared to CR 3.61), a high-risk cytogenetic profile (HR compared to standard-risk 1.61), ISS III (HR compared to ISS I 1.56), and IgA subtype (HR compared to IgG 1.23). Variables affecting NRM included age ≥ 75 years (HR compared to 40-64 years =2.11), being in relapse/progression at auto-HCT (HR compared to CR 2.05), ISS III (HR compared to ISS I =2.03), high HCT-CI risk (HR compared to low HCT-CI risk =1.84) and non-secretory isotype (HR compared to IgG =1.54).

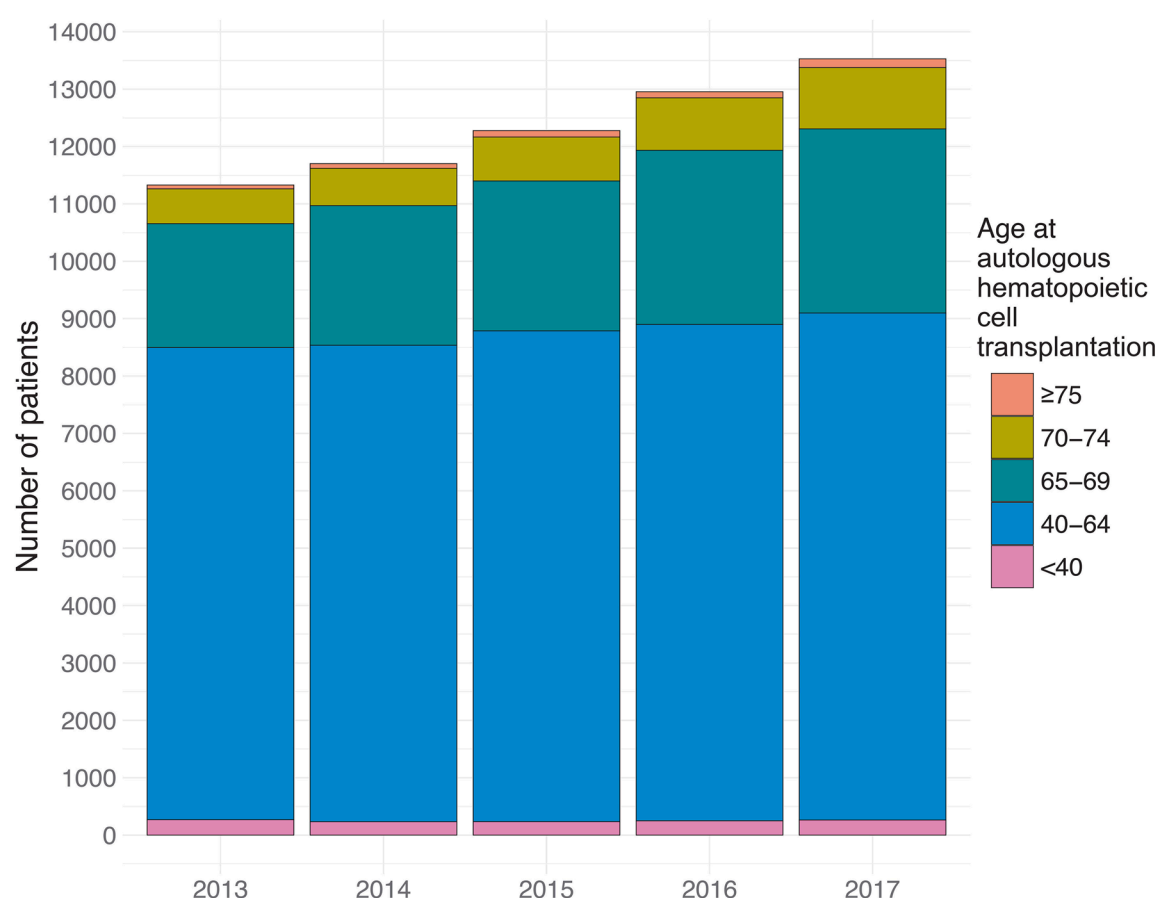


Figure 2. Annual number of autologous hematopoietic cell transplantation by categories of age at autologous hematopoietic cell transplantation.

Age was next modeled both as a continuous variable with a linear effect and, in a more flexible manner, using splines adjusted for the variables listed in Table 2. In the spline model, hazard of death increased significantly in patients aged ≥ 70 years, but, because of limited patient numbers, CI were wide and were not significantly different from the linear model ($P=0.17$; *Online Supplementary Figure S2A*). Hazards of events in PFS and relapse increased more strongly in patients aged ≥ 70 years and decreased more strongly in patients aged <40 years in the spline model as compared to the linear model (difference from linear model $P=0.05$ and $P=0.06$, respectively; *Online Supplementary Figure S2B, C*). For NRM, the spline model was not significantly different from the linear age model ($P=0.62$), but both were more strongly associated with age as compared to OS, PFS, and relapse (*Online Supplementary Figure S2D*). In the linear model, the association between age and OS, PFS, relapse, and NRM was 1.10 (95% CI: 1.07-1.14), 1.03 (95% CI: 1.01-1.05), 1.01

(95% CI: 0.99-1.03), and 1.37 (95% CI: 1.28-1.47) for each 10-year increment, respectively.

Association between melphalan dose and outcome for different age at autologous hemtopoietic cell transplantation

We examined whether the beneficial association between high dose melphalan (200 mg/m² vs. 140 mg/m²) and outcomes (Table 2) was similar across all age groups by including an interaction term between melphalan dose and age. We found a significant interaction in the analysis of OS ($P=0.004$), PFS ($P=0.02$), and relapse ($P=0.04$), but no significant interaction in the NRM analysis ($P=0.78$; Table 3). In the analyses of OS, PFS, and relapse, the beneficial association between 200 mg/m² melphalan and outcome after auto-HCT decreased with lower age at auto-HCT, resulting in no significant differences in OS, PFS, and relapse for patients aged 37 years at auto-HCT (median age in the group of patients <40 years of age at

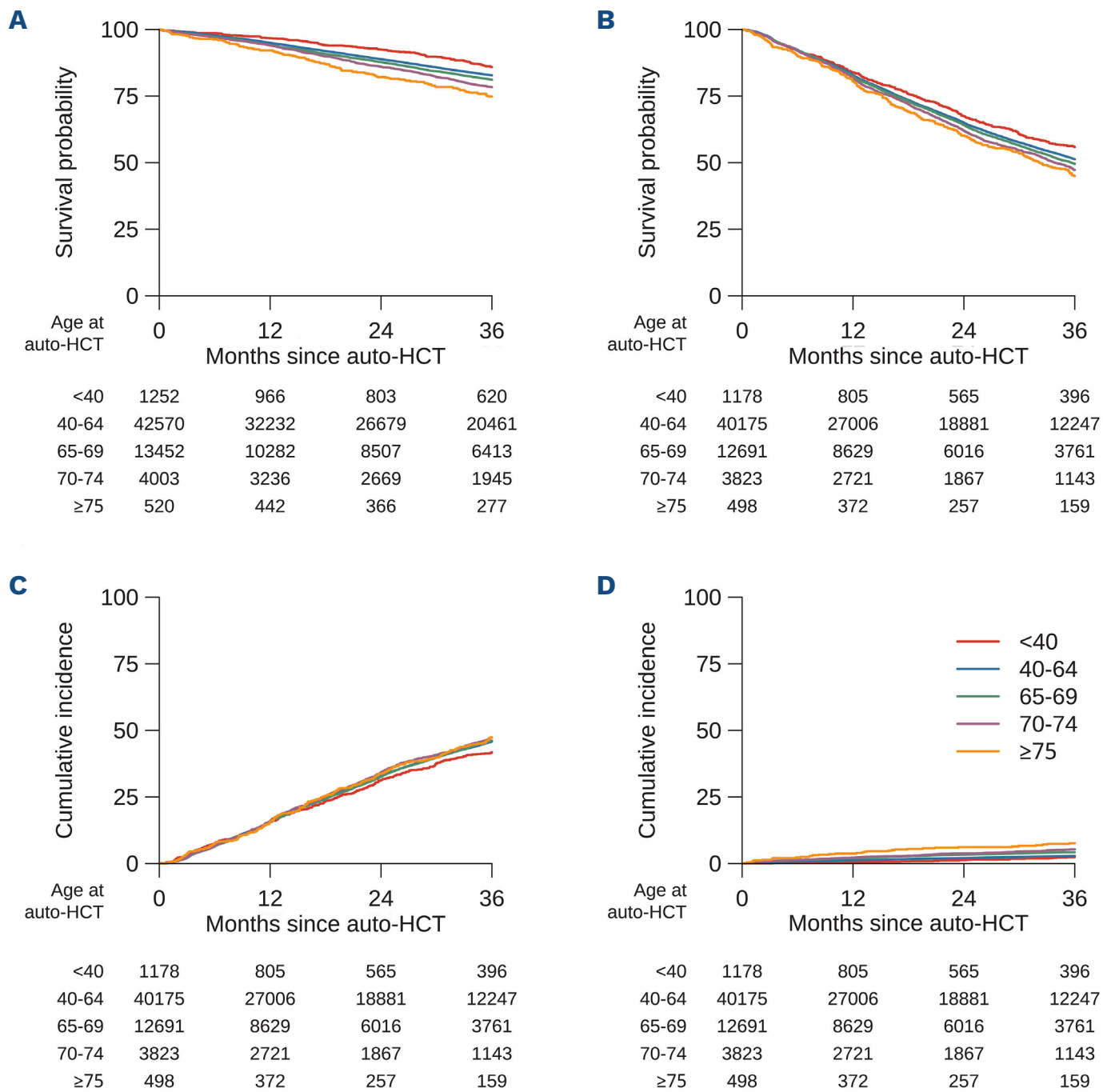


Figure 3. Transplant outcomes in multiple myeloma by age group. (A) Overall survival. (B) Progression-free survival. (C) Cumulative incidence of relapse. (D) Cumulative incidence of non-relapse mortality. auto-HCT: autologous hematopoietic cell transplantation.

Table 2. Risk estimates of the association between age at autologous hematopoietic cell transplantation and other baseline characteristics, and outcome after autologous hematopoietic cell transplantation obtained using multivariable Cox (cause-specific) proportional hazards models.

Variables	Overall survival		Progression-free survival		Relapse		Non-relapse mortality	
	HR (95% CI)	P	HR (95% CI)	P	HR (95% CI)	P	HR (95% CI)	P
Age at auto-HCT, years	-	<0.001	-	0.001	-	0.19	-	<0.001
18-39	0.84 (0.70-1.00)	0.05	0.94 (0.85-1.04)	0.24	0.94 (0.85-1.04)	0.25	0.80 (0.52-1.25)	0.34
40-64	1.00	-	1.00	-	1.00	-	1.00	-
65-69	1.10 (1.05-1.17)	<0.001	1.03 (1.00-1.07)	0.05	1.01 (0.98-1.04)	0.61	1.43 (1.27-1.60)	<0.001
70-74	1.23 (1.13-1.34)	<0.001	1.09 (1.03-1.15)	0.003	1.05 (0.99-1.11)	0.10	1.62 (1.36-1.94)	<0.001
≥75	1.45 (1.19-1.76)	<0.001	1.20 (1.05-1.36)	0.006	1.12 (0.98-1.29)	0.09	2.11 (1.48-3.02)	<0.001
Sex								
Male	1.00	-	1.00	-	1.00	-	1.00	-
Female	0.92 (0.88-0.96)	<0.001	0.93 (0.90-0.95)	<0.001	0.93 (0.90-0.96)	<0.001	0.90 (0.81-1.00)	0.04
M-protein isotype	-	<0.001	-	<0.001	-	<0.001	-	0.001
IgG	1.00	-	1.00	-	1.00	-	1.00	-
IgA	1.41 (1.33-1.49)	<0.001	1.23 (1.19-1.28)	<0.001	1.23 (1.19-1.28)	<0.001	1.34 (1.17-1.53)	<0.001
Light chain	1.11 (1.05-1.18)	<0.001	1.06 (1.02-1.10)	<0.001	1.06 (1.02-1.09)	0.002	1.11 (0.98-1.27)	0.10
Other Ig	1.49 (1.26-1.77)	<0.001	1.20 (1.07-1.35)	0.002	1.18 (1.04-1.32)	0.008	1.35 (0.91-2.00)	0.13
Non-secretory	1.44 (1.21-1.71)	<0.001	1.08 (0.97-1.21)	0.16	1.05 (0.93-1.18)	0.42	1.54 (1.06-2.22)	0.02
Cytogenetic risk	-	<0.001	-	<0.001	-	<0.001	-	<0.001
Standard	1.00	-	1.00	-	1.00	<0.001	1.00	<0.001
High	2.09 (1.95-2.23)	<0.001	1.59 (1.53-1.66)	<0.001	1.61 (1.54-1.68)	<0.001	1.34 (1.15-1.57)	<0.001
International Staging System	-	<0.001	-	<0.001	-	<0.001	-	<0.001
I	1.00	-	1.00	-	1.00	-	1.00	-
II	1.51 (1.40-1.64)	<0.001	1.25 (1.19-1.30)	<0.001	1.24 (1.19-1.30)	<0.001	1.45 (1.22-1.72)	<0.001
III	2.23 (2.07-2.42)	<0.001	1.59 (1.52-1.66)	<0.001	1.56 (1.49-1.64)	<0.001	2.03 (1.71-2.40)	<0.001
Time from diagnosis to HCT, per 6 more months	1.00 (0.99-1.01)	0.68	1.00 (0.99-1.00)	0.70	1.00 (0.99-1.00)	0.54	1.00 (0.98-1.02)	0.82
Disease status at auto-HCT	-	<0.001	-	<0.001	-	<0.001	-	<0.001
CR	1.00	-	1.00	-	1.00	-	1.00	-
VGPR	1.20 (1.12-1.28)	<0.001	1.26 (1.21-1.31)	<0.001	1.28 (1.22-1.33)	<0.001	0.99 (0.85-1.15)	0.89
PR	1.48 (1.38-1.59)	<0.001	1.58 (1.52-1.65)	<0.001	1.59 (1.52-1.67)	<0.001	1.42 (1.22-1.65)	<0.001
MR/SD	2.07 (1.85-2.30)	<0.001	1.94 (1.81-2.08)	<0.001	1.93 (1.80-2.07)	<0.001	2.01 (1.59-2.53)	<0.001
Relapse/progression	4.84 (4.29-5.47)	<0.001	3.49 (3.20-3.81)	<0.001	3.61 (3.30-3.95)	<0.001	2.05 (1.39-3.01)	<0.001
Untreated	1.08 (0.59-1.95)	0.81	1.25 (0.90-1.74)	0.18	1.26 (0.90-1.77)	0.18	0.89 (0.22-3.60)	0.87
KPS at auto-HCT								
100	1.00	-	1.00	-	1.00	-	1.00	-
≤90	1.25 (1.18-1.33)	<0.001	1.09 (1.05-1.13)	<0.001	1.07 (1.04-1.11)	<0.001	1.33 (1.16-1.52)	<0.001
HCT-CI risk	-	<0.001	-	0.05	-	0.98	-	<0.001
Low: 0	1.00	-	1.00	-	1.00	-	1.00	-
Intermediate risk: 1-2	1.14 (1.06-1.21)	<0.001	1.02 (0.98-1.06)	0.35	1.00 (0.96-1.04)	0.92	1.34 (1.16-1.56)	<0.001
High: ≥3	1.36 (1.26-1.45)	<0.001	1.06 (1.02-1.11)	0.004	1.02 (0.97-1.07)	0.42	1.84 (1.57-2.15)	<0.001
Year of auto-HCT, per subsequent year	0.94 (0.92-0.96)	<0.001	0.95 (0.94-0.96)	<0.001	0.95 (0.94-0.96)	<0.001	0.98 (0.94-1.03)	0.45
Conditioning regimen								
Mel 140 mg/m ²	1.00	-	1.00	-	1.00	-	1.00	-
Mel 200 mg/m ²	0.89 (0.83-0.95)	<0.001	0.91 (0.87-0.95)	<0.001	0.93 (0.89-0.97)	0.002	0.71 (0.62-0.82)	<0.001
Other conditioning	0.96 (0.83-1.11)	0.59	0.91 (0.84-1.00)	0.05	0.93 (0.85-1.02)	0.14	0.78 (0.56-1.10)	0.15

Models included a country specific random effect. Overall *P* values were obtained using the likelihood ratio test and test whether in multi-categorical variables associations between categories and the outcome in question are all the same. Missing values were modeled using a missing category (not shown in this table). auto-HCT: autologous hematopoietic cell transplantation; HR: hazard ratio; CI: confidence interval; Mel: melphalan; Ig: immunoglobulin; KPS: Karnofsky performance status; HCT-CI: hematopoietic cell transplantation-specific comorbidity index; CR: complete response; VGPR: very good partial response; PR: partial response; MR: minor response; SD: stable disease. High cytogenetic risk was defined as: deletion 17p, and/or t(4;14), and/or t(14;16); in Europe deletion 17p, and/or t(4;14), and/or t(14;16) and/or t(14;20) and/or hypodiploid and/or 1q gain and/or deletion 1p.

auto-HCT). In older patients, the beneficial association between 200 mg/m² melphalan and OS, PFS, relapse was stronger compared to the results obtained from the model without interaction.

Excess mortality

Population mortality tables were available for 58,620 patients from 34 countries (of 61,797 patients from 61 countries). The excess mortality rates at 1 and 3 years attributable to MM and its treatment in this subset were 4.2% (95% CI: 4.0-4.4%) and 14.9% (95% CI: 14.5-15.3%), respectively, while population mortality rates at 1 and 3 years were 0.9% and 2.8%, respectively (Figure 4A; *Online Supplementary Table S2*). Excess mortality was not significantly different according to age at auto-HCT ($P=0.67$) and was 13.1% (95% CI: 10.7-15.5%), 15.0% (95% CI: 14.6-15.5%), 14.6% (95% CI: 13.8-15.3%), 15.0% (95% CI: 13.5-16.5%), and 14.1% (95% CI: 9.8-18.3%) at 3 years in the age groups 18-39, 40-64, 65-69, 70-74, and ≥ 75 , respectively (Figure 4B; *Online Supplementary Table S2*). Excess mortality was not significantly different between male and female patients ($P=0.43$) and was 15.0% (95% CI: 14.5-15.5%) and 14.7% (95% CI: 14.2-15.3%) at 3 years, respectively (Figure 4C; *Online Supplementary Table S2*). Finally, in the multivariable analyses, age was not a significant risk factor for excess mortality ($P=0.30$), and neither was sex ($P=0.40$; Table 4). As in the multivariable analysis for OS, a more recent year of auto-HCT, a higher KPS, M-protein isotype IgG, standard-risk cytogenetic, lower ISS, lower HCT-CI status and melphalan 200 mg/m² were associated with lower excess mortality.

Discussion

This study was based on a comprehensive dataset of 61,797 patients with newly diagnosed MM who underwent auto-HCT worldwide between 2013 and 2017. We observed a clear age-related trend in OS and PFS, with patients aged 65-69, 70-74, and ≥ 75 years at the time of auto-HCT having poorer survival rates compared to those aged 40-64 years in uni- and multi-variable analyses adjusted for differences in the distribution of ISS stage, high-risk cytogenetics, low KPS, HCT-CI, melphalan dose and disease stage before auto-HCT. However, in uni- and multi-variable analyses taking mortality in the general population into account, we found excess mortality to be similar in those aged 40-64, 65-69, 70-74, and ≥ 75 years. The NRM at 1 year was 0.5% in patients aged <40 years, 1.3% in patients aged 40-64 years, and 3.8% in patients aged ≥ 75 years. Other reports in older patients found that NRM at 100 days and 1 year to be approximately 1-3%.^{20,21} One center reported that patients aged ≤ 40 years transplanted after 2010 had a significantly improved median PFS (84.9 months vs. 28.2 months; $P<0.001$) and OS (not reached vs. 91.8 months; $P<0.001$) compared to those transplanted prior to 2010.³ Age has traditionally been used as a variable to determine eligibility for auto-HCT, with some guidelines suggesting arbitrary cut-offs of 65 or 70 years.^{22,23} Advances in supportive care have reduced NRM,¹⁵ making auto-HCT a feasible option for older patients. Whereas in the past, a higher NRM and poorer OS²⁴ may have prevented older patients from being considered for this option, auto-HCT rates increased by approximately 20% between 2013 and 2017 and mostly in

Table 3. Association between melphalan dose and outcome for different ages at autologous hematopoietic cell transplantation.

Age at auto-HCT, years	Overall survival Risk of death		Progression-free survival Risk of relapse/death		Relapse		Non-relapse mortality Death without re-lapse	
	HR (95% CI) Mel 200 vs. Mel 140	P	HR (95% CI) Mel 200 vs. Mel 140	P	HR (95% CI) Mel 200 vs. Mel 140	P	HR (95% CI) Mel 200 vs. Mel 140	P
37	1.21 (0.95-1.53)	0.12	1.06 (0.92-1.22)	0.43	1.06 (0.92-1.23)	0.41	0.67 (0.40-1.11)	0.12
57	0.95 (0.87-1.04)	0.28	0.94 (0.89-0.99)	0.02	0.95 (0.90-1.01)	0.11	0.70 (0.57-0.85)	<0.001
67	0.84 (0.79-0.99)	<0.001	0.88 (0.84-0.92)	<0.001	0.90 (0.86-0.95)	<0.001	0.72 (0.62-0.83)	<0.001
72	0.79 (0.73-0.87)	<0.001	0.85 (0.81-0.90)	<0.001	0.88 (0.83-0.93)	<0.001	0.73 (0.61-0.87)	<0.001
77	0.75 (0.66-0.85)	<0.001	0.83 (0.77-0.89)	<0.001	0.85 (0.79-0.92)	<0.001	0.74 (0.57-0.94)	0.02
Interaction	-	0.004	-	0.02	-	0.04	-	0.78
Model without age interaction*	0.89 (0.83-0.95)	0.001	0.91 (0.87-0.95)	<0.001	0.93 (0.89-0.97)	0.002	0.71 (0.62-0.82)	<0.001

auto-HCT: autologous hematopoietic cell transplantation; HR: hazard ratio; CI: confidence interval; Mel 200: melphalan 200 mg/m²; Mel 140: melphalan 140 mg/m². Mel 140 is the reference (HR=1). Estimates of the HR of Mel 200 versus Mel 140 are shown for example ages (37, 57, 67, 72, and 77 years; median ages of the age groups <40 , 40-65, 65-70, 70-75, ≥ 75 , respectively). Age at auto-HCT was included in the Cox proportional hazard models as a continuous variable (covering all ages) with a linear effect on the (log) hazard. Models included, melphalan dose, interaction term age \times melphalan dose, variables presented in Table 2 and a country specific random effect. *As presented in Table 2.

patients aged ≥ 65 years. There are relatively few reports of auto-HCT in patients aged ≥ 75 years. Patients are often excluded because of age, frailty or comorbidities (high-risk score for HCT-CI in our study) and global clinical practice varies considerably. Overall, the percentage of patients aged ≥ 75 years was less than 1% of all patients and they were predominantly treated in the USA, Europe, and Australia/New Zealand. Health insurance, age distribution in the general population, and local practice guidelines may influence this variation. Interestingly, the risk of relapse did not differ significantly in these older groups despite higher ISS stages and higher cytogenetic risk profiles. Belotti *et al.* reported that in patients aged 70–75 years classified as unfit according to the International Myeloma Working Group frailty score, no significant PFS difference was observed between auto-HCT and no auto-HCT.²⁵ However, the Center for International Blood and Marrow Transplantation Research reported that even frail patients aged 65–83 years, as classified by the simplified frailty index, have an expected 100-day NRM of $<2\%$ after auto-HCT.²⁶ These earlier reports, as well as our own, support the view that age alone should not be used to determine eligibility for auto-HCT.

The melphalan dose used for conditioning plays a significant role in patient outcomes. The dose is selected at the physician's discretion or based on local practice guidelines, generally according to factors such as renal function or performance status. Melphalan 140 mg/m² was commonly

used in patients aged ≥ 70 years in this real-world study as well as in other reports.^{20,21,27,28} However, a French study reported the safety and efficacy of a melphalan dose of 200 mg/m² for older patients in a prospective multicenter study.²⁹ Another report found that OS, PFS, and NRM, but not RI, were superior in patients who received melphalan 200 mg/m² than in those who received melphalan 140 mg/m², suggesting that patient selection based on perceived frailty may result in lower OS and PFS, and higher NRM in the melphalan 140 mg/m² group.²⁸ Our study identified a melphalan dose of 140 mg/m² to be a risk factor for NRM at all ages suggesting that physicians likely selected the lower melphalan dose for less fit patients, as indicated by the similar findings in these two studies. Meanwhile, Auner *et al.* reported similar outcomes of melphalan 140 mg/m² compared with 200 mg/m² in patients aged ≥ 65 years according to the remission status in a retrospective analysis.³⁰ Although we attempted to adjust for different variables in the multivariate analysis, there remains the potential for additional confounding by uninvestigated factors such as renal function and other factors related to frailty not fully captured by the KPS.

Shah *et al.* reported that auto-HCT was cost-effective compared with non-transplant approaches and should be considered in patients aged >65 years in the era of novel agents.³¹ Recently, results of triplet or quadruplet therapies with anti-CD38 antibodies were published. For patients receiving daratumumab plus lenalidomide and dexamethasone

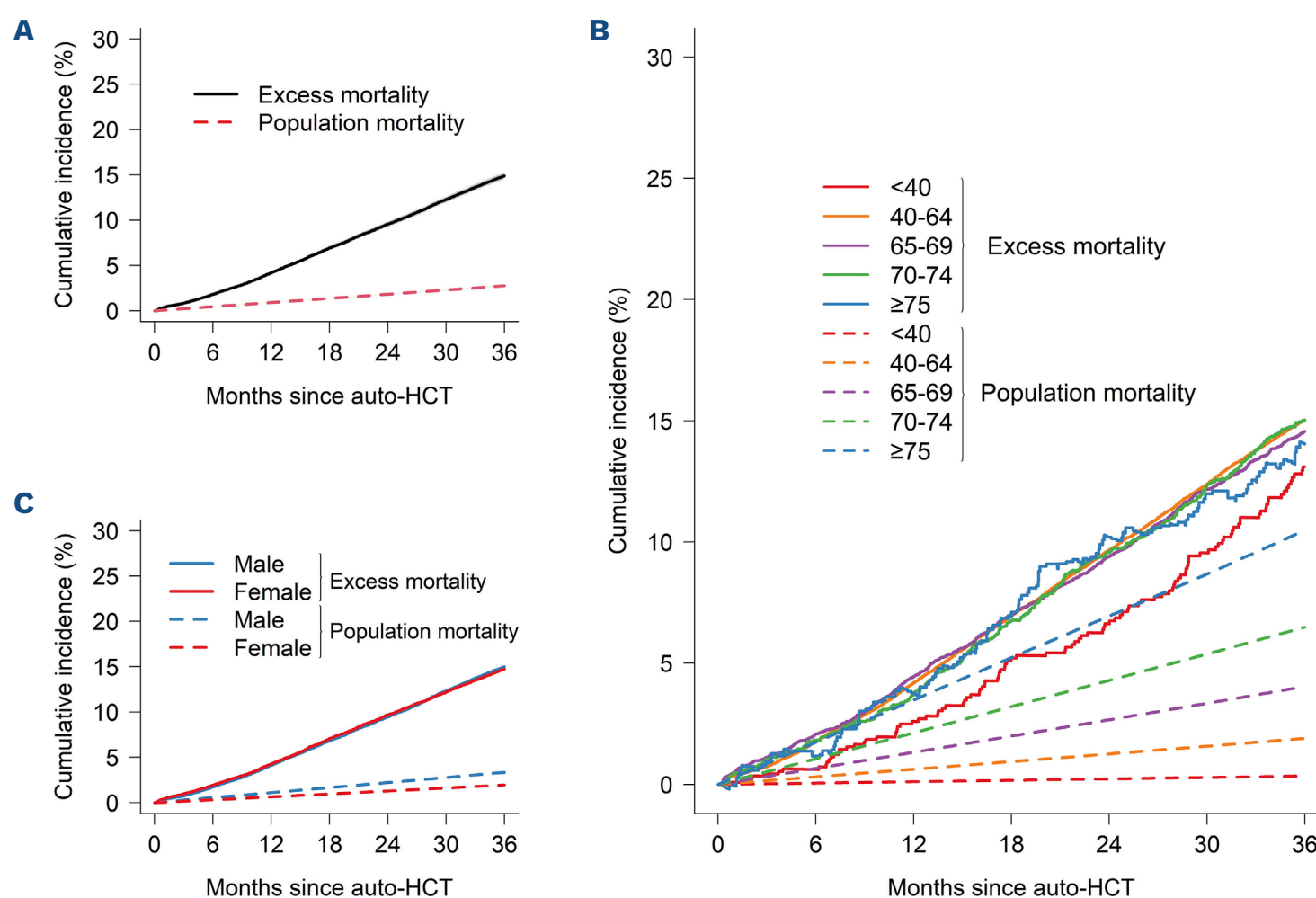


Figure 4. Population mortality and excess mortality on 58,620 patients from 34 countries. (A) All patients. (B) Age at autologous hematopoietic cell transplantation (auto-HCT). (C) Sex.

in the MAIA trial, the estimated 5-year OS and PFS rates were 66.6% and 52.1%, respectively.³² With the quadruplet therapy in the IMROZ trial using isatuximab, lenalidomide, bortezomib and dexamethasone, the 5-year OS and PFS were 72.3% and 63.2%, respectively.³³⁻³⁶ In our real-world multicenter and multiregional study, the 5-year OS and PFS were 69.6% (95% CI: 69.1-70.1) and 33.8% (95% CI: 33.2-34.3), respectively. However, cross trial comparisons should be interpreted with caution due to differences in patient populations (HCT ineligible, HCT-deferred age). Whether these new drugs, either alone or in combination, further improve the results of auto-HCT in newly diagnosed MM patients

Table 4. Multivariable analysis of excess mortality.

	Excess mortality	
	HR (95% CI)	P
Age at auto-HCT, years	-	0.30
18-39	0.90 (0.74-1.10)	0.29
40-64	1.00	-
65-69	0.97 (0.91-1.04)	0.36
70-74	0.94 (0.84-1.06)	0.32
≥75	0.89 (0.65-1.23)	0.49
Sex	-	-
Male	1.00	-
Female	0.98 (0.93-1.03)	0.40
Year of auto-HCT, per subsequent year	0.93 (0.91-0.95)	<0.001
KPS at auto-HCT	-	-
100	1.00	-
≤90	1.21 (1.13-1.30)	<0.001
M-protein isotype	-	<0.001
IgG	1.00	-
IgA	1.50 (1.40-1.61)	<0.001
Light chain	1.12 (1.04-1.20)	<0.001
Other Ig	1.70 (1.39-2.06)	<0.001
Non-secretory	1.55 (1.27-1.90)	<0.001
Cytogenetic risk	-	<0.001
Standard	1.00	-
High	2.25 (2.07-2.44)	<0.001
International Staging System	-	<0.001
I	1.00	-
II	1.66 (1.50-1.84)	<0.001
III	2.64 (2.40-2.92)	<0.001
Time at diagnosis auto-HCT, per 6 more months	1.00 (0.99-1.01)	0.41
Disease status at auto-HCT	-	<0.001
CR	1.00	-
VGPR	1.24 (1.13-1.35)	<0.001
PR	1.57 (1.44-1.72)	<0.001
MR/SD	2.21 (1.95-2.51)	<0.001
Relapse/progression	5.95 (5.20-6.82)	<0.001
Untreated	0.77 (0.31-1.93)	0.58
HCT-CI risk	-	<0.001
Low: 0	1.00	-
Intermediate risk: 1-2	1.05 (0.97-1.14)	0.19
High: ≥3	1.18 (1.09-1.28)	<0.001
Conditioning regimen	-	<0.001
Mel 140 mg/m ²	1.00	-
Mel 200 mg/m ²	0.87 (0.80-0.95)	0.001
Other conditioning	0.97 (0.81-1.16)	0.75

auto-HCT: autologous hematopoietic cell transplantation; HR: hazard ratio; CI: confidence interval; KPS: Karnofsky performance status; Mel: melphalan; Ig: immunoglobulin. HCT-CI: hematopoietic cell transplantation-specific comorbidity index; CR: complete response; VGPR: very good partial response; PR: partial response; MR: minor response; SD: stable disease.

should be studied prospectively. Chimeric antigen receptor T cells and T-cell redirecting bispecific antibodies directly harness T-cell activity and have shown substantial efficacy in heavily pretreated MM patients. In the CARTITUDE-4 and KarMMA-3 trials, chimeric antigen receptor T cells showed improved PFS compared to standard of care therapies after 1-3 prior lines of therapy in lenalidomide-refractory MM or after 2-4 prior lines of therapy in daratumumab-refractory MM patients.^{37,38} Bispecific antibodies such as teclistamab, elranatamab, and talquetamab showed impressive single agent response rates (63%,³⁹ 61%,⁴⁰ and 60-70%,⁴¹ respectively) in heavily pretreated patients with triple-class refractory MM.

Older age at auto-HCT and male sex were identified as prognostic factors for poorer OS; however, these factors are also associated with reduced life expectancy in the general population. Consequently, we analyzed excess mortality and found that neither age nor sex were significant prognostic factors. The small proportion of transplant recipients aged ≥ 75 years likely represent a highly selected group of fit patients. As a consequence, population mortality might have been overestimated and the excess mortality underestimated. Although age should be considered when assessing risk, it should not be used as the sole reason to exclude older patients from auto-HCT. The results of this study do not imply that auto-HCT is safe for all older patients. Therefore, auto-HCT has been shown to be a safe and effective treatment for older patients who have undergone thorough eligibility screening by their hematologist or oncologist. Previous studies in patients with MM have documented a short-term deterioration in health-related quality of life after auto-HCT and a recovery within 3-6 months.^{42,43} A very small proportion of patients continue to report moderate to severe symptoms that persist at 1 year and beyond.⁴⁴ But also, no difference in both physical and mental health scores were reported in long-term survivors of auto-HCT.⁴⁵ In addition to the presence or absence of complications, consideration of post-transplant quality of life is important.

Our study has important limitations. Reporting practices, data collection systems, and quality control measures vary between registries, leading to differences in the amount of missing information. Unfortunately, causes of death and detailed comorbidities were not reported, which prevented further analyses. Maintenance therapy policies might vary depending on regional insurance coverage and guidelines. Additionally, due to limited data on maintenance therapy, we were not able to include it as a variable in the analysis. Since maintenance therapy was reported in 84% to 90% of patients with available information across all age groups, the bias of not including maintenance in the model may be neglectable. The rate of maintenance therapy following auto-HCT was reported to be approximately 30% in 2013, which significantly increased to approximately 80% in 2017.⁴⁶ In the current study, the year of auto-HCT also

emerged as a favorable prognostic factor for OS, PFS, and relapse. This increase in uptake of maintenance therapy over time may partly explain our observation of improved outcomes over time.

In conclusion, this large study demonstrated the age differences in patients undergoing auto-HCT in different geographical regions. Furthermore, increasing age was shown to be a risk factor for OS, PFS, and NRM in patients with MM aged ≥ 65 years, but not for relapse and excess mortality. In other words, auto-HCT should be considered in the treatment plan for patients deemed eligible, regardless of their age. The patients aged ≥ 70 years with MM undergoing auto-HCT outside of clinical trials can expect 1-year NRM of 2-4%, 3-year PFS of 45-48%, 3-year OS of 74-79%, and 3-year excess mortality of 14-15%. Auto-HCT is increasingly used¹³ worldwide as a safe procedure for transplant eligible patients based on the physician's decision, especially due to the increased auto-HCT rate of patients aged ≥ 65 years. Our data provides a useful perspective as the number of older patients for whom auto-HCT may be the standard of care increases worldwide.

Disclosures

SM received research funding from Hayashikane Sangyo and lecture fees from Johnson & Johnson. AD reports clinical trial funding to institution from Abbvie, Alexion, Prothena, Janssen, Novartis, and Regeneron; institutional research committee, data monitoring committee, or steering committee role with Abbvie, BMS, Janssen, and Prothena; advisory board role with Abbvie, BMS, Janssen, Prothena, and Pfizer. MI received research funding from AIR WATER Inc. HT received honorarium from Janssen, Ono, Sanofi, and Bristol-Myers Squibb and consultancy fees from Adaptive Biotechnologies. KK discloses honorarium from Sanofi. JAS discloses consulting fees from Medac, Jazz, MSD and Vertex. Yoshiko Atsuta received lecture fee/honorarium from Otsuka Pharmaceutical Co., Ltd, Chugai Pharmaceutical Co., Ltd, Novartis Pharma K.K., Meiji Seika Pharma Co., Ltd, and Janssen Pharmaceutical K.K.; and consultant fees from JCR Pharmaceuticals Co., Ltd. LG received consultancy fees from Janssen, Bristol-Myers Squibb, Sanofi, Pfizer and GSK. All other authors have no conflicts of interest to disclose.

Contributions

SM, LGa, LGr, MA, YA, and DN designed the study. LK, LB, AD, NEM, PNH, WS, AJC, MI, SO, HT, SM, KK, YK, NH, BSK, CL, KWH, ASG, TSK, AME, AB, BQUNC, RA, MAB, MB, CAFO, ER, SG, FB, HM, AMcC, FRW, MBCK, JAS, SS, DMcL, PNH, AMSB, and HTG enrolled patients. SM, LGa, LGr, DNe, NH, MA, YA, DR, and DWN analyzed the data. SM, LGa, LGr, DN, NH, MA, EV, YA, DR, and DWN wrote the manuscript.

Acknowledgments

The authors would like to thank the patients, their family, all physicians and staff in the collaborating institutes of the EBMT,

CIBMTR, ANZTCT, APBMT, JSHCT/JDCHCT, MTRMOHM, TBMT, EMBMT, LABMT, and OBDCMMD. We would also like to thank Damjan Manevski for helping out with the relsurv function.

Funding

This work was supported by the grants from the Japanese Society of Myeloma Research Awards.

Data-sharing statement

Datasets from the Worldwide Network for Blood and Marrow Transplantation are not publicly available outside of working groups. Access to these datasets requires permission from the WBMT executive committee. The corresponding author can be contacted, if the details of the datasets are required.

References

1. Sung H, Ferlay J, Siegel RL, et al. Global cancer statistics 2020: GLOBOCAN Estimates of incidence and mortality worldwide for 36 cancers in 185 countries. *CA Cancer J Clin*. 2021;71(3):209-249.
2. Jurczyszyn A, Nahi H, Avivi I, et al. Characteristics and outcomes of patients with multiple myeloma aged 21-40 years versus 41-60 years: a multi-institutional case-control study. *Br J Haematol*. 2016;175(5):884-891.
3. Pasvolsky O, Marcoux C, Milton DR, et al. Outcomes of young adults (aged ≤ 40 years) with newly diagnosed multiple myeloma after up-front autologous stem cell transplant. *Br J Haematol*. 2023;202(4):866-873.
4. Caulier A, Roussel M, Morel P, et al. Epidemiological landscape of young patients with multiple myeloma diagnosed before 40 years of age: the French experience. *Blood*. 2021;138(25):2686-2695.
5. Nakaya A, Kohara T, Shibayama H, et al. Retrospective multi-center study of adolescent and young adult (AYA) multiple myeloma in Kansai Myeloma Forum Registry. *Int J Hematol*. 2020;112(4):435-438.
6. Handa H, Ishida T, Ozaki S, Mori A, Kato K, Iida S. Treatment pattern and clinical outcomes in multiple myeloma patients in Japan using the Medical Data Vision claims database. *PLoS One*. 2023;18(4):e0283931.
7. Howlader N, Noone AM, Krapcho M, et al. SEER cancer statistics review, 1975-2018. Bethesda, MD: National Cancer Institute; April 2021. Available from: https://seer.cancer.gov/csr/1975_2018/. Accessed on 06-19-2025.
8. Blimark CH, Turesson I, Genell A, et al. Outcome and survival of myeloma patients diagnosed 2008-2015. Real-world data on 4904 patients from the Swedish Myeloma Registry. *Haematologica*. 2018;103(3):506-513.
9. Richardson PG, Jacobus SJ, Weller EA, et al. Triplet therapy, transplantation, and maintenance until progression in myeloma. *N Engl J Med*. 2022;387(2):132-147.
10. Attal M, Lauwers-Cances V, Marit G, et al. Lenalidomide maintenance after stem-cell transplantation for multiple myeloma. *N Engl J Med*. 2012;366(19):1782-1791.
11. Dimopoulos MA, Moreau P, Terpos E, et al. Multiple myeloma: EHA-ESMO clinical practice guidelines for diagnosis, treatment and follow-up. *Hemasphere*. 2021;5(2):e528.
12. Paul B, Lipe B, Ocio EM, Usmani SZ. Induction therapy for newly diagnosed multiple myeloma. *Am Soc Clin Oncol Educ Book*. 2019(39):e176-e186.
13. Cowan AJ, Baldomero H, Atsuta Y, et al. The global state of hematopoietic cell transplantation for multiple myeloma: an analysis of the Worldwide Network of Blood and Marrow Transplantation Database and the Global Burden of Disease Study. *Biol Blood Marrow Transplant*. 2020;26(12):2372-2377.
14. Shimazu Y, Mizuno S, Fuchida SI, et al. Improved survival of multiple myeloma patients treated with autologous transplantation in the modern era of new medicine. *Cancer Sci*. 2021;112(12):5034-5045.
15. Mizuno S, Kawamura K, Hanamura I, et al. Efficacy and safety of autologous stem cell transplantation in patients aged ≥ 65 years with multiple myeloma in the era of novel agents. *Bone Marrow Transplant*. 2019;54(10):1595-1604.
16. Pohar Perme M, de Wreede LC, Manevski D. What is relative survival and what is its role in haematology? *Best Pract Res Clin Haematol*. 2023;36(2):101474.
17. Pohar M, Stare J. Relative survival analysis in R. *Comput Methods Programs Biomed*. 2006;81(3):272-278.
18. Pohar Perme M, Estève J, Rachet B. Analysing population-based cancer survival - settling the controversies. *BMC Cancer*. 2016;16(1):933.
19. R Core Team. R: A language and environment for statistical computing. Version 4.3.2. Vienna, Austria: R Foundation for Statistical Computing; 2024. Available from: <https://www.r-project.org/>. Accessed on 06-19-2025.
20. Munshi PN, Vesole DH, St Martin A, et al. Outcomes of upfront autologous hematopoietic cell transplantation in patients with multiple myeloma who are 75 years old or older. *Cancer*. 2021;127(22):4233-4239.
21. Vaxman I, Visram A, Kumar S, et al. Autologous stem cell transplantation for multiple myeloma patients aged ≥ 75 treated with novel agents. *Bone Marrow Transplant*. 2021;56(5):1144-1150.
22. Moreau P, Touzeau C, Vij R, Goldsmith SR, Rosko AE. Newly diagnosed myeloma in 2020. *Am Soc Clin Oncol Educ Book*. 2020;40:1-15.
23. Dimopoulos MA, Moreau P, Terpos E, et al. Multiple myeloma: EHA-ESMO clinical practice guidelines for diagnosis, treatment and follow-up†. *Ann Oncol*. 2021;32(3):309-322.
24. Badros A, Barlogie B, Siegel E, et al. Autologous stem cell transplantation in elderly multiple myeloma patients over the age of 70 years. *Br J Haematol*. 2001;114(3):600-607.
25. Belotti A, Ribolla R, Cancelli V, et al. Transplant eligibility in elderly multiple myeloma patients: Prospective external validation of the international myeloma working group frailty score and comparison with clinical judgment and other comorbidity scores in unselected patients aged 65-75 years. *Am J Hematol*. 2020;95(7):759-765.
26. Yohay S, Oloyede T, Kim S, et al. Outcomes of frail patients undergoing high-dose chemotherapy and autologous stem cell transplantation for multiple myeloma. *Br J Haematol*. 2024;205(6):2370-2375.
27. Lemieux C, Muffly LS, Rezvani A, et al. Outcomes with autologous stem cell transplant vs. non-transplant therapy in patients 70 years and older with multiple myeloma. *Bone Marrow Transplant*. 2021;56(2):368-375.
28. Munshi PN, Vesole D, Jurczyszyn A, et al. Age no bar: A CIBMTR analysis of elderly patients undergoing autologous

- hematopoietic cell transplantation for multiple myeloma. *Cancer*. 2020;126(23):5077-5087.
29. Garderet L, Beohou E, Caillot D, et al. Upfront autologous stem cell transplantation for newly diagnosed elderly multiple myeloma patients: a prospective multicenter study. *Haematologica*. 2016;101(11):1390-1397.
 30. Auner HW, Iacobelli S, Sbianchi G, et al. Melphalan 140 mg/m² or 200 mg/m(2) for autologous transplantation in myeloma: results from the Collaboration to Collect Autologous Transplant Outcomes in Lymphoma and Myeloma (CALM) study. A report by the EBMT Chronic Malignancies Working Party. *Haematologica*. 2018;103(3):514-521.
 31. Shah GL, Winn AN, Lin PJ, et al. Cost-effectiveness of autologous hematopoietic stem cell transplantation for elderly patients with multiple myeloma using the surveillance, epidemiology, and end results-medicare database. *Biol Blood Marrow Transplant*. 2015;21(10):1823-1829.
 32. Facon T, Moreau P, Weisel K, et al. Daratumumab/lenalidomide/dexamethasone in transplant-ineligible newly diagnosed myeloma: MAIA long-term outcomes. *Leukemia*. 2025;39(4):942-950.
 33. Facon T, Dimopoulos MA, Leleu XP, et al. Isatuximab, bortezomib, lenalidomide, and dexamethasone for multiple myeloma. *N Engl J Med*. 2024;391(17):1597-1609.
 34. Askeland FB, Haukås E, Slørdahl TS, et al. Isatuximab, bortezomib, lenalidomide, and limited dexamethasone in patients with transplant-ineligible multiple myeloma (REST): a multicentre, single-arm, phase 2 trial. *Lancet Haematol*. 2025;12(2):e120-e127.
 35. Leleu X, Hulin C, Lambert J, et al. Isatuximab, lenalidomide, dexamethasone and bortezomib in transplant-ineligible multiple myeloma: the randomized phase 3 BENEFIT trial. *Nat Med*. 2024;30(8):2235-2241.
 36. Usmani SZ, Facon T, Hungria V, et al. Daratumumab plus bortezomib, lenalidomide and dexamethasone for transplant-ineligible or transplant-deferred newly diagnosed multiple myeloma: the randomized phase 3 CEPHEUS trial. *Nat Med*. 2025;31(4):1195-1202.
 37. San-Miguel J, Dhakal B, Yong K, et al. Cilta-cel or standard care in lenalidomide-refractory multiple myeloma. *N Engl J Med*. 2023;389(4):335-347.
 38. Rodriguez-Otero P, Ailawadhi S, Arnulf B, et al. Ide-cel or standard regimens in relapsed and refractory multiple myeloma. *N Engl J Med*. 2023;388(11):1002-1014.
 39. Moreau P, Garfall AL, van de Donk N, et al. Teclistamab in relapsed or refractory multiple myeloma. *N Engl J Med*. 2022;387(6):495-505.
 40. Lesokhin AM, Tomasson MH, Arnulf B, et al. Elranatamab in relapsed or refractory multiple myeloma: phase 2 MagnetisMM-3 trial results. *Nat Med*. 2023;29(9):2259-2267.
 41. Chari A, Minnema MC, Berdeja JG, et al. Talquetamab, a T-cell-redirecting GPRC5D bispecific antibody for multiple myeloma. *N Engl J Med*. 2022;387(24):2232-2244.
 42. Campagnaro E, Saliba R, Giralt S, et al. Symptom burden after autologous stem cell transplantation for multiple myeloma. *Cancer*. 2008;112(7):1617-1624.
 43. Chakraborty R, Hamilton BK, Hashmi SK, Kumar SK, Majhail NS. Health-related quality of life after autologous stem cell transplantation for multiple myeloma. *Biol Blood Marrow Transplant*. 2018;24(8):1546-1553.
 44. D'Souza A, Brazauskas R, Stadtmauer EA, et al. Trajectories of quality of life recovery and symptom burden after autologous hematopoietic cell transplantation in multiple myeloma. *Am J Hematol*. 2023;98(1):140-147.
 45. Chakraborty R, Yi J, Rybicki L, et al. Patient-reported outcomes in long-term survivors of autologous hematopoietic cell transplantation in multiple myeloma. *Transplant Cell Ther*. 2023;29(6):388.e1-388.e6.
 46. Karam D, Gertz M, Lacy M, et al. Impact of maintenance therapy post autologous stem cell transplantation for multiple myeloma in early and delayed transplant. *Bone Marrow Transplant*. 2022;57(5):803-809.