

Minimal residual disease status predicts outcomes in patients with follicular lymphoma treated with chemo-immunotherapy on the SWOG S0016 trial

Authors

Alexey V. Danilov,¹ Hongli Li,^{2,3} Mazyar Shadman,³ Lisa Rimsza,⁴ Ahmad Zebari,³ Sonali M. Smith,⁵ Michael LeBlanc,^{2,3} Jonathan W. Friedberg,⁶ Christopher Carlson^{3#} and Joo Y. Song^{1#}


¹City of Hope Comprehensive Cancer Center, Duarte, CA; ²SWOG Statistical and Data Management Center, Seattle, WA; ³Fred Hutchinson Cancer Center, Seattle, WA; ⁴University of Arizona, Tucson, AZ; ⁵University of Chicago Comprehensive Cancer Center, Chicago, IL and ⁶University of Rochester, Rochester, NY, USA

#CC and JYS contributed equally as senior authors.

Correspondence:
A.V. DANILOV - adanilov@coh.org

<https://doi.org/10.3324/haematol.2025.288057>

Received: April 17, 2025.
Accepted: June 20, 2025.
Early view: July 3, 2025.

©2025 Ferrata Storti Foundation
Published under a CC BY-NC license 

Supplemental Material

Supplemental Table 1. Five and ten-year PFS an OS depending on response and MRD status

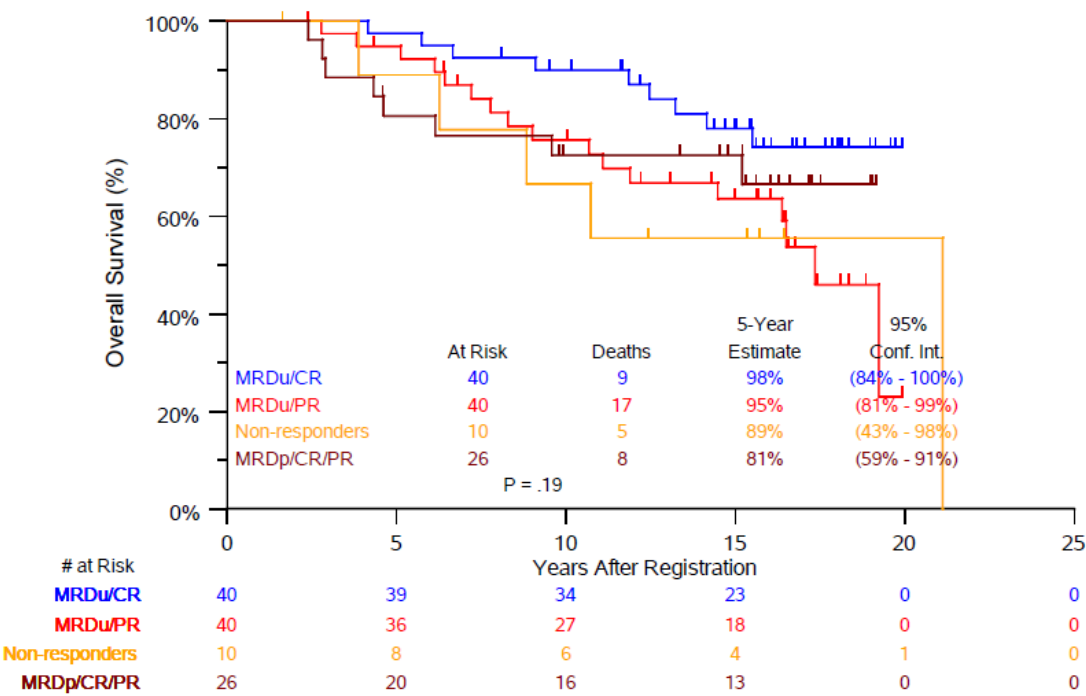
Group	N	PFS events	5-year PFS (95%CI)	10-year PFS (95%CI)	OS events	5-year OS (95%CI)	10-year OS (95%CI)
MRDu and CR	40	18	75% (59-86%)	68% (51-80%)	9	98% (84-100%)	90% (75-96%)
MRDu and PR	40	26	70% (53-82%)	43% (27-58%)	17	95% (81-99%)	76% (58-87%)
MRDp and CR or PR	26	22	34% (17-52%)	21% (8-39%)	8	81% (59-91%)	73% (51-86%)
Non-responders	10	9	30% (7-58%)	20% (3-47%)	5	89% (43-98%)	67% (28-88%)

Supplemental Table 2. PFS and OS by treatment arm

MRD state	Treatment	5-year PFS (95% CI)	10-year PFS (95% CI)	HR (95% CI)	5-year OS (95% CI)	10-year OS (95% CI)	HR (95% CI)
MRDu	CHOP-R	61% (42-76%)	42% (25-58%)	0.48 (0.26 – 0.87) p=0.01	97% (79-100%)	80% (61-90%)	0.54 (0.25 – 1.16) p=0.11
	CHOP-RIT	80% (65-88%)	67% (52-78%)		98% (86-100%)	85% (71-93%)	
MRDp	CHOP-R	20% (6-39%)	5% (0-21%)	0.38 (0.16-0.87) p=0.02	89% (64-97%)	79% (53-92%)	1.54 (0.41- 5.77) p=0.52
	CHOP-RIT	50% (21-74%)	40% (14-66%)		66% (32-86%)	66% (32-86%)	

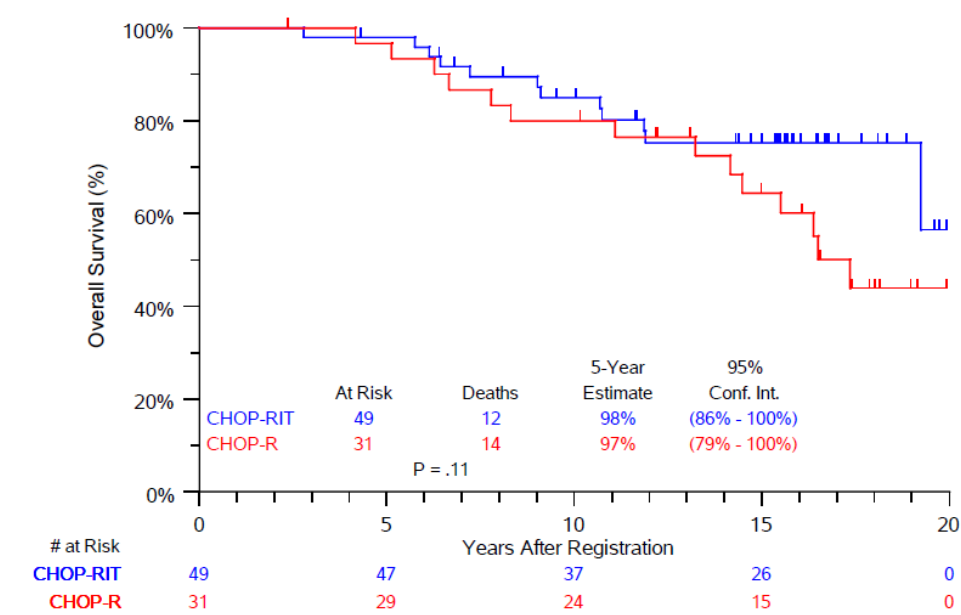
Supplemental Figure 1. OS and MRD.

A. 5-year OS depending on response and MRD status



B. 5-year OS depending on treatment and MRD status

MRDu



MRDp

