

Age-related disparities in treatment and outcomes for newly diagnosed multiple myeloma: a population-based study

Authors


Xinhe Shan,¹ Rowan Kuiper,² Chuling Ding,³ Pashna N. Munshi,⁴ Edward A. Stadtmauer⁴ and Sandra P. Susanibar-Adaniya⁴

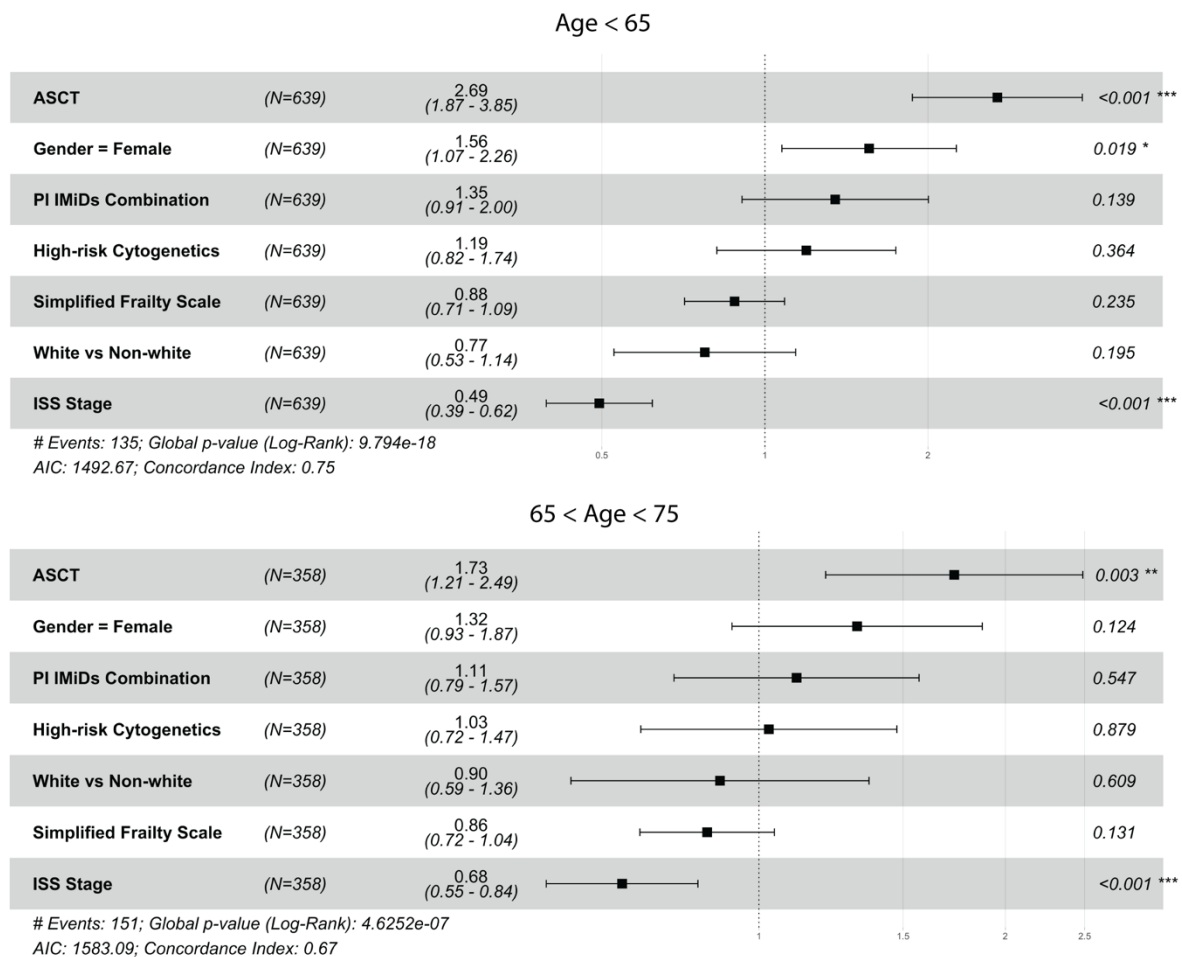
¹Department of Internal Medicine, Albert Einstein College of Medicine, Bronx, NY, USA; ²SkylineDx, Rotterdam, the Netherlands; ³Wellcome Trust Sanger Institute, Hinxton, Cambridge, UK and ⁴Division of Hematology/Oncology, Department of Medicine, Perelman School of Medicine of the University of Pennsylvania, Philadelphia, PA, USA

Correspondence:
S. P. SUSANIBAR-ADANIYA - sandra.susanibaradaniya@pennmedicine.upenn.edu

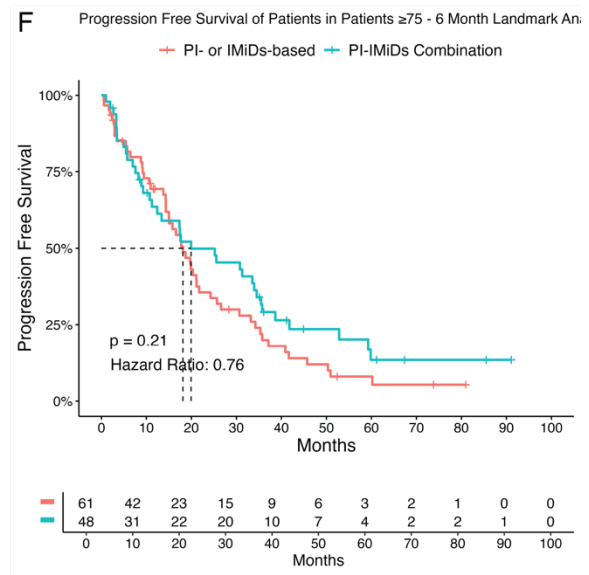
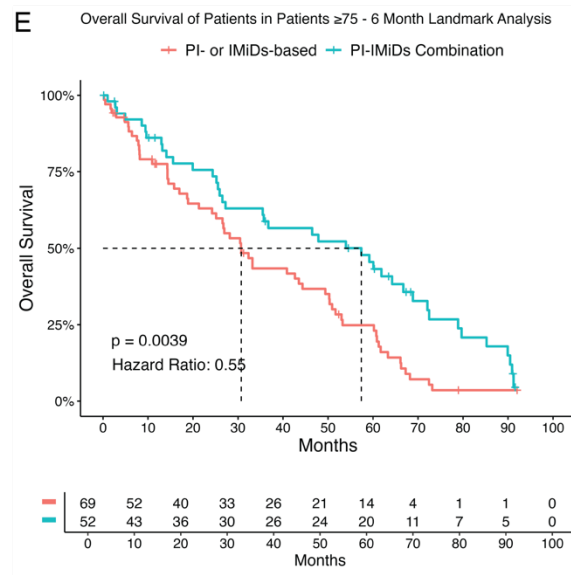
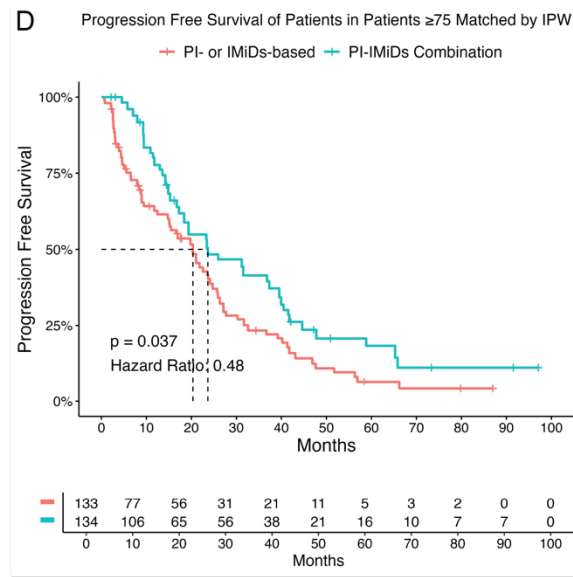
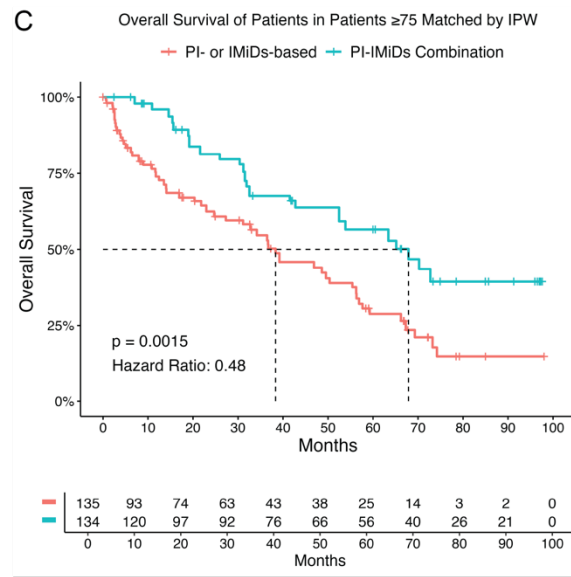
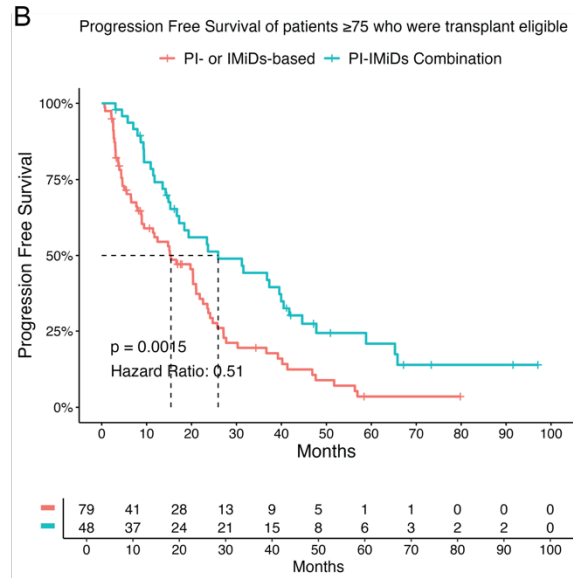
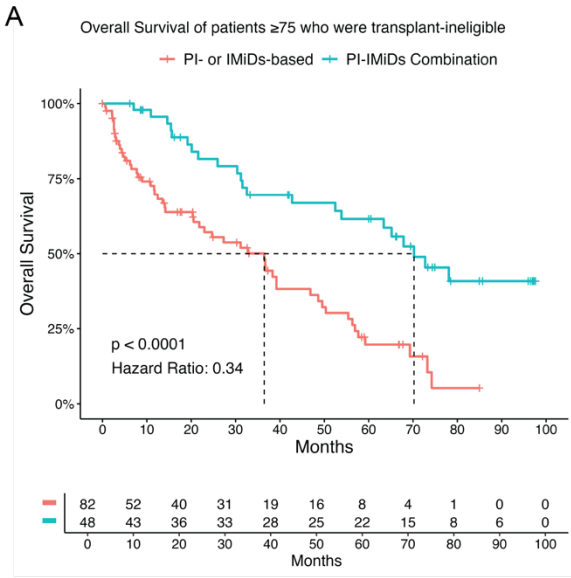
<https://doi.org/10.3324/haematol.2025.287506>

Received: February 5, 2025.
Accepted: May 13, 2025.
Early view: May 29, 2025.

©2025 Ferrata Storti Foundation
Published under a CC BY-NC license 



Supplemental Figure 1. Multivariate analysis predicting factors for overall survival
Forest plot of hazard ratios for various prognostic factors associated with survival in patients aged below 65(top) and between 65 and 75(bottom).



Supplemental Figure 2. Comparison of Overall Survival (OS) and Progression-Free Survival (PFS) in Patients ≥ 75 years. **(A)** Comparison of OS among aged ≥ 75 who did not receive ASCT and were treated with either PI- or IMiD-based therapy (red) or a PI-IMiD combination therapy (blue) as first-line treatment. **(B)** Comparison of PFS among in the same patient groups. **(C)** Comparison of OS after IPW match **(D)** Comparison of PFS after IPW match. **(E)** Comparison of OS with six-month landmark analysis **(F)** Comparison of PFS with six-month landmark analysis

Supplemental Table 1. Characteristics of the patients aged 75 and above who received either PI-IMiD combination therapy or PI- or IMiD-based therapy

	PI- or IMiD	PI-IMiD combination	p-value
Number of patients	93	53	
Median age	81	79	0.41
Median OS (months)	36.7	70.2	<0.001
Median PFS (months)	19.8	23.7	0.012
Sex			1
Male	54 (58.7%)	30 (57.7%)	
Female	38 (41.3%)	22 (42.3%)	
Race			0.9
White	74 (80.4%)	42 (80.8%)	
Black	17 (18.5%)	9 (17.3%)	
Asian	1 (1.1%)	1 (1.9%)	
Staging			0.8
ISS I	42 (45.7%)	25 (48.1%)	
ISS II	28 (30.4%)	13 (25.0%)	
ISS III	16 (17.4%)	10 (19.2%)	
Symptoms at presentation			
Anemia	47 (51.1%)	44 (84.6%)	<0.001
Hypercalcemia	10 (10.9%)	11 (21.2%)	0.15
Renal Insufficiency	9 (9.8%)	5 (9.6%)	1
Simplified Frailty Scale			0.21
0	4 (4.30%)	2 (3.77%)	
1	7 (7.53%)	9 (16.98%)	

>1	82 (88.17%)	42 (79.25%)	
ECOG			0.04
0-1	62 (67.4%)	44 (84.6%)	
≥2	30 (32.6%)	8 (15.4%)	
CCI			0.11
0-1	56 (60.9%)	34 (65.4%)	
≥2	28 (30.4%)	9 (17.3%)	
NA	8 (8.7%)	9 (17.3%)	
HDCT/ASCT	2 (2.2%)	8 (15.4%)	<0.001
Best Overall Response			0.11
CR	3 (3.3%)	9 (17.3%)	
sCR	2 (2.2%)	2 (3.8%)	
VGPR	43 (46.7%)	22 (42.3%)	
PR	20 (21.7%)	15 (28.8%)	
SD	10 (10.9%)	4 (7.7%)	
PD	1 (1.1%)	0 (0.0%)	
Adverse Events	37 (40.2%)	14 (26.9%)	0.15