

Durable remission achieved in pediatric patients with *TCF3-HLF*-positive relapsed/refractory B-cell acute lymphoblastic leukemia by dual CD19- and CD22-targeted chimeric antigen receptor T-cell therapy

Authors

Xinyu Wan,* Tianyi Wang,* Jing Yang,* Xiaomin Yang, Wenjie Li, Lixia Ding, Liu Yang, Jing Zhang, Meng Su, Kang An, Zichao Zhou, Yue Li, Xiang Wang, Hua Zhu, Chengjuan Luo, Longjun Gu, Jing Chen, Lili Song,# Yanjing Tang# and Benshang Li#


Department of Hematology and Oncology, Key laboratory of Pediatric Hematology and Oncology Ministry of Health, Shanghai Children's Medical Center, Shanghai Jiao Tong University School of Medicine, Shanghai, China

*XWan, TW and JY contributed equally as first authors.
#LS, YT and BL contributed equally as senior authors.

Correspondence:
B. LI - libenshang@scmc.com.cn

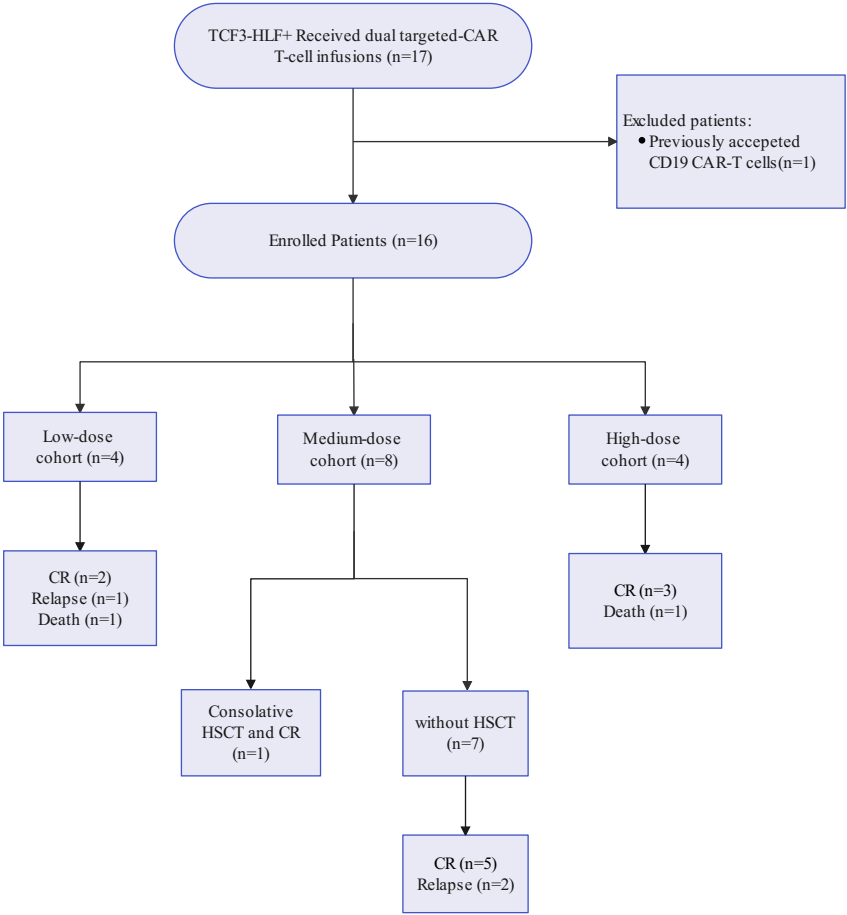
<https://doi.org/10.3324/haematol.2024.287023>

Received: December 2, 2024.
Accepted: May 9, 2025.
Early view: May 22, 2025.

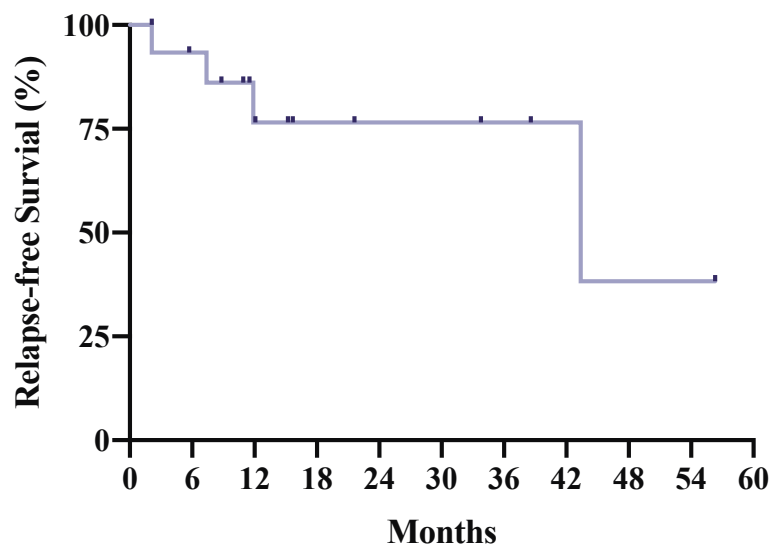
©2026 Ferrata Storti Foundation 
Published under a CC BY-NC license

Supplementary Figures

A)



B)



C)

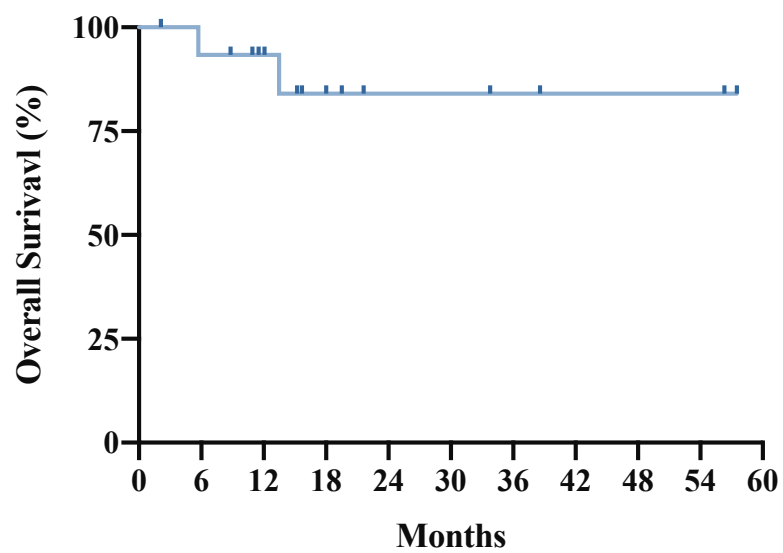
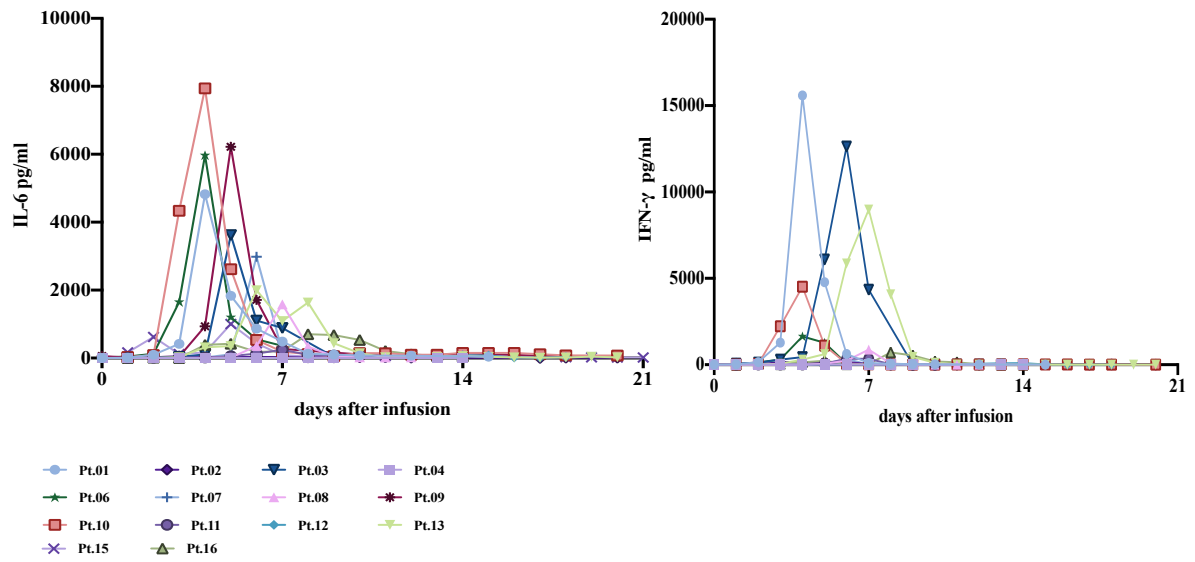


Figure S1 A) CONSORT diagram; B) and C) Kaplan–Meier estimates of Relapse-free survival and Overall survival of all 16 treated patients.

A)



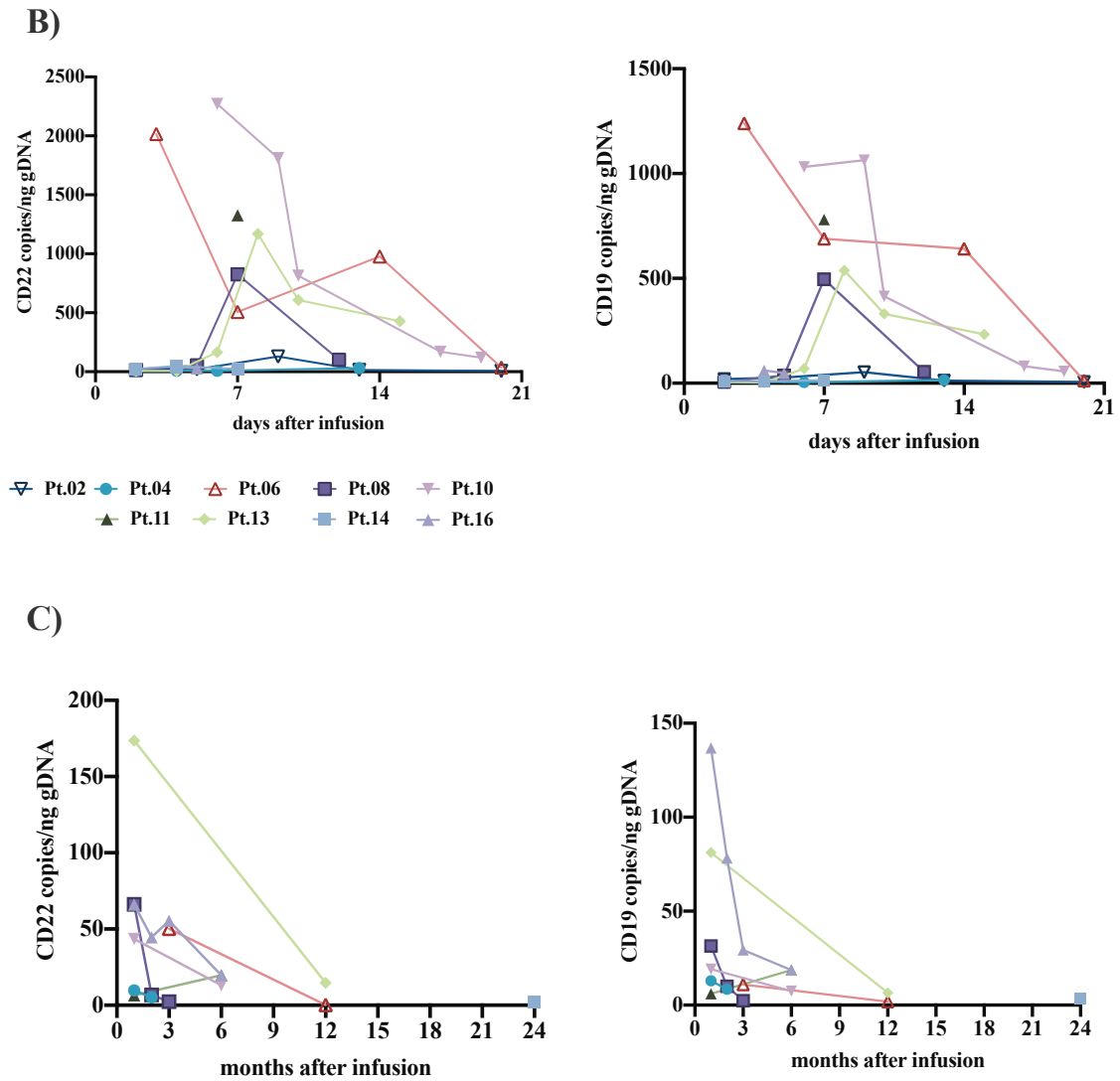


Figure S2 A) demonstrated the level of IL-6 and IFN- γ of all patients in the first 3 weeks after CAR-T cell infusion, respectively. INFG, interferon-gamma. **B)** Kinetics of CD19 or CD22 CAR T cells in peripheral blood of individual patients as detected using real-time PCR in the first 28 days after infusion; **C)** long-term follow-up of CAR-T cell pharmacokinetics in PB.