

Prognostic and biological characteristics associated with multiple myeloma presenting only with anemia

Authors

Gilad Shamir,^{1*} Ory Rouvio^{2*} and Anat Reiner-Benaim¹

¹Department of Epidemiology, Biostatistics and Community Health Sciences, School of Public Health, Faculty of Health Sciences, Ben-Gurion University of the Negev, Beer-Sheba and ²Department of Internal Medicine A, Multiple Myeloma Clinic, Hematology, Soroka University Medical Center, Negev, Beer-Sheba, Israel

**GS and OR contributed equally as first authors.*

Correspondence:

G. SHAMIR - shamirgi@post.bgu.ac.il

<https://doi.org/10.3324/haematol.2024.286457>

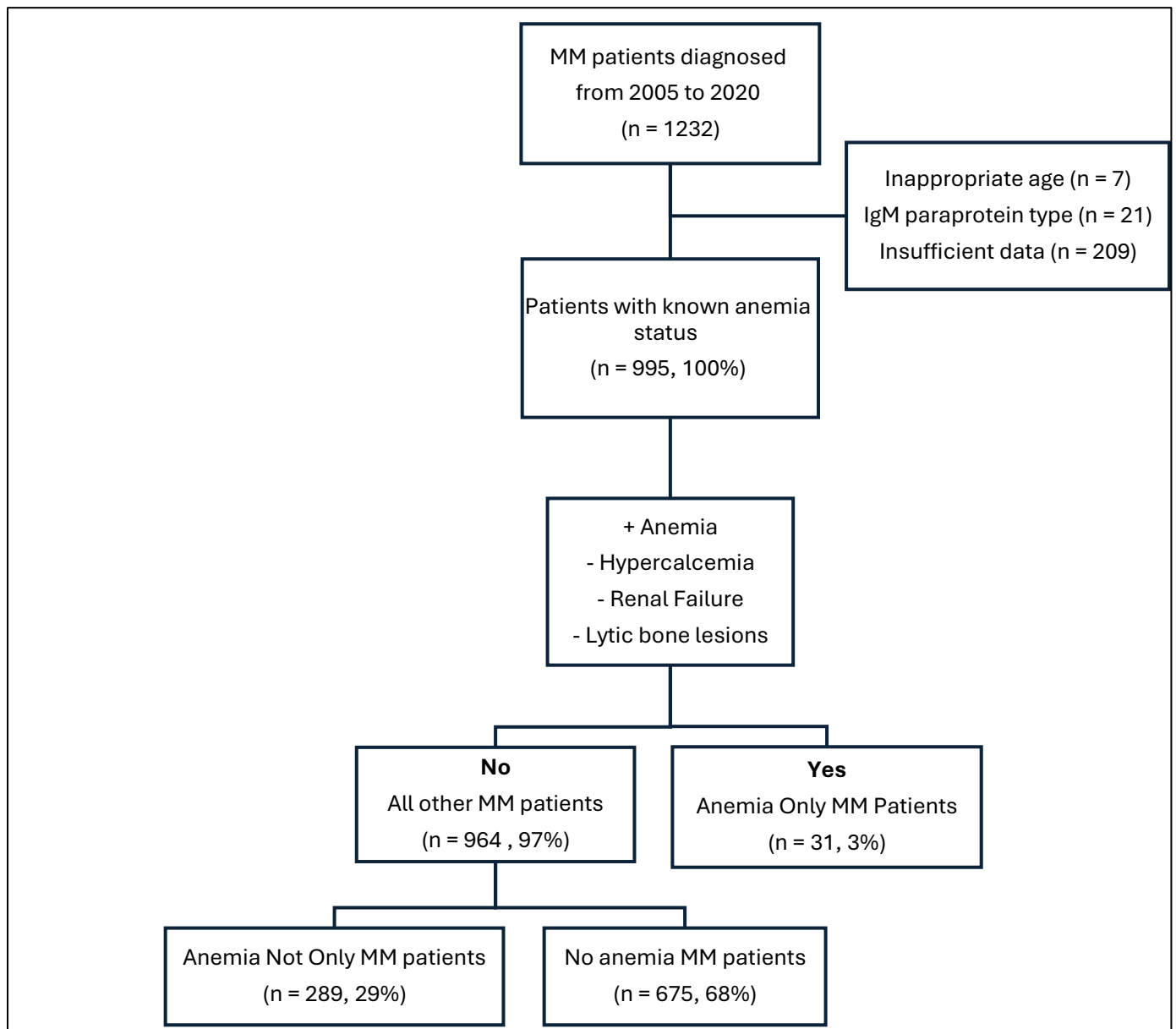
Received: November 28, 2024.

Accepted: April 22, 2025.

Early view: April 30, 2025.

©2025 Ferrata Storti Foundation

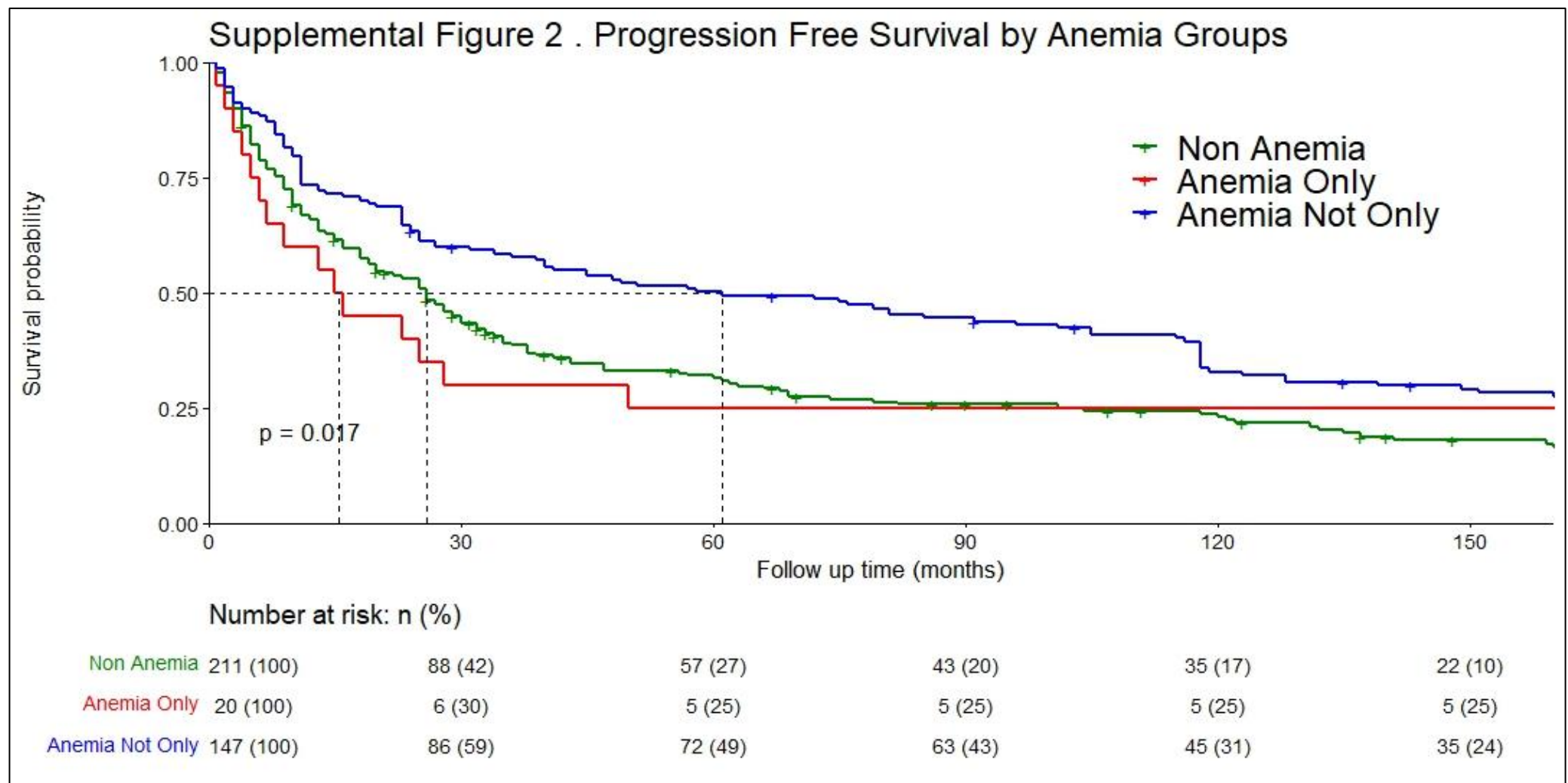
Published under a CC BY-NC license 



Supplemental Figure 1. Study design. Description of Included and Excluded Participants and distribution into Anemia Groups.

Supplemental Table 1. Progression free survival Multivariate Cox regression

Variable	HR	95% CI	p-value
Anemia groups			
No Anemia	—	—	
Anemia Only	1.52	0.82, 2.81	0.2
Anemia Not Only	0.74	0.58, 0.94	0.013
Age > 71	0.93	0.71, 1.22	0.6
Year of diagnosis			
<2009	—	—	
2009-2015	2.36	1.65, 3.38	<0.001
>2015	3.67	2.40, 5.62	<0.001
Hypercalcemia	1.59	1.16, 2.19	0.004
Hyperglobulinemia	1.28	1.01, 1.61	0.043
Comorbidity			
No Chronic diseases	—	—	
One Or More Chronic Diseases	0.73	0.57, 0.93	0.010
Lenalidomide for first line	0.49	0.29, 0.84	0.008
Melphalan for first line	0.55	0.38, 0.79	0.001
AIC	2,964		
HR=Hazard Ratio, CI = Confidence Interval, AIC = Akaike information criterion			



Supplemental Figure 2. Kaplan Meier curve of progression free survival graph by anemia groups. Comparison of Progression Free Survival of patients who don't represent anemia at all (green), patients who represent only anemia (red), and patients who represent anemia with at least one more CRAB symptom (blue).