

High immunoproteasome and low constitutive proteasome subunit levels correlate with sensitivity to bortezomib-containing chemotherapy: update from the Children’s Oncology Group AALL1231 trial

Authors

Margot S. F. Roeten,¹ Johan van Meerloo,¹ Suzanne N. van Dijk,¹ Zinia Kwidama,¹ Gaye Jenkins,² David T. Teachey,³ Meenakshi Devidas,⁴ Mignon L. Loh,⁵ Gertjan J. L. Kaspers,^{6,7} Sonja Zweegman,¹ Gerrit Jansen,⁸ Terzah M. Horton^{2#} and Jacqueline Cloos^{1#}

¹Department of Hematology, Cancer Center Amsterdam, Amsterdam UMC location Vrije Universiteit Amsterdam, Amsterdam, the Netherlands; ²Texas Children’s Hospital, Department of Pediatrics, Division of Hematology/Oncology, Baylor College of Medicine and Dan L. Duncan Cancer Center, Houston, TX, USA; ³Department of Pediatrics and the Center for Childhood Cancer Research, Children’s Hospital of Philadelphia and The Perelman School of Medicine at The University of Pennsylvania, Philadelphia, PA, USA; ⁴Department of Global Pediatric Medicine, St Jude Children’s Research Hospital, Memphis, TN, USA; ⁵Division of Hematology, Oncology, BMT, and Cellular Therapies, Seattle Children’s Hospital, Seattle, WA, USA; ⁶Princess Máxima Center of

Pediatric Oncology, Utrecht, the Netherlands; ⁷Emma Children’s Hospital, Amsterdam UMC, Vrije Universiteit Amsterdam, Pediatric Oncology, Amsterdam, the Netherlands and ⁸Amsterdam Rheumatology and Immunology Center, Cancer Center Amsterdam, Amsterdam UMC, location Vrije Universiteit, Amsterdam, the Netherlands

#TMH and JC contributed equally as senior authors.

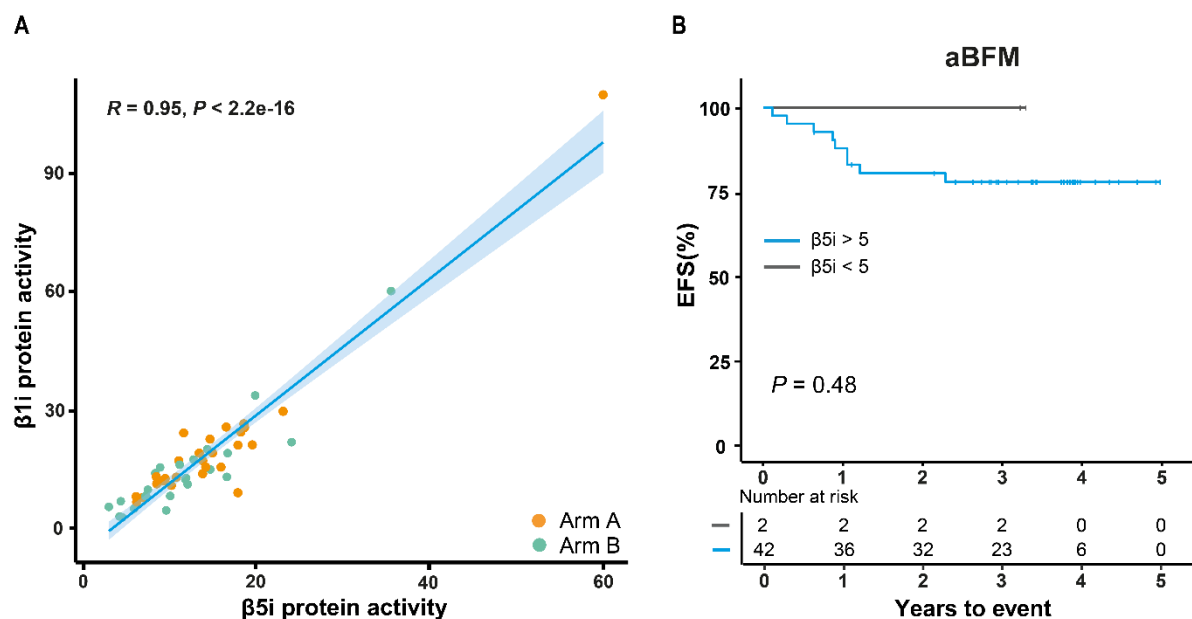
Correspondence:
J. CLOOS - j.cloos@amsterdamumc.nl

<https://doi.org/10.3324/haematol.2024.286171>

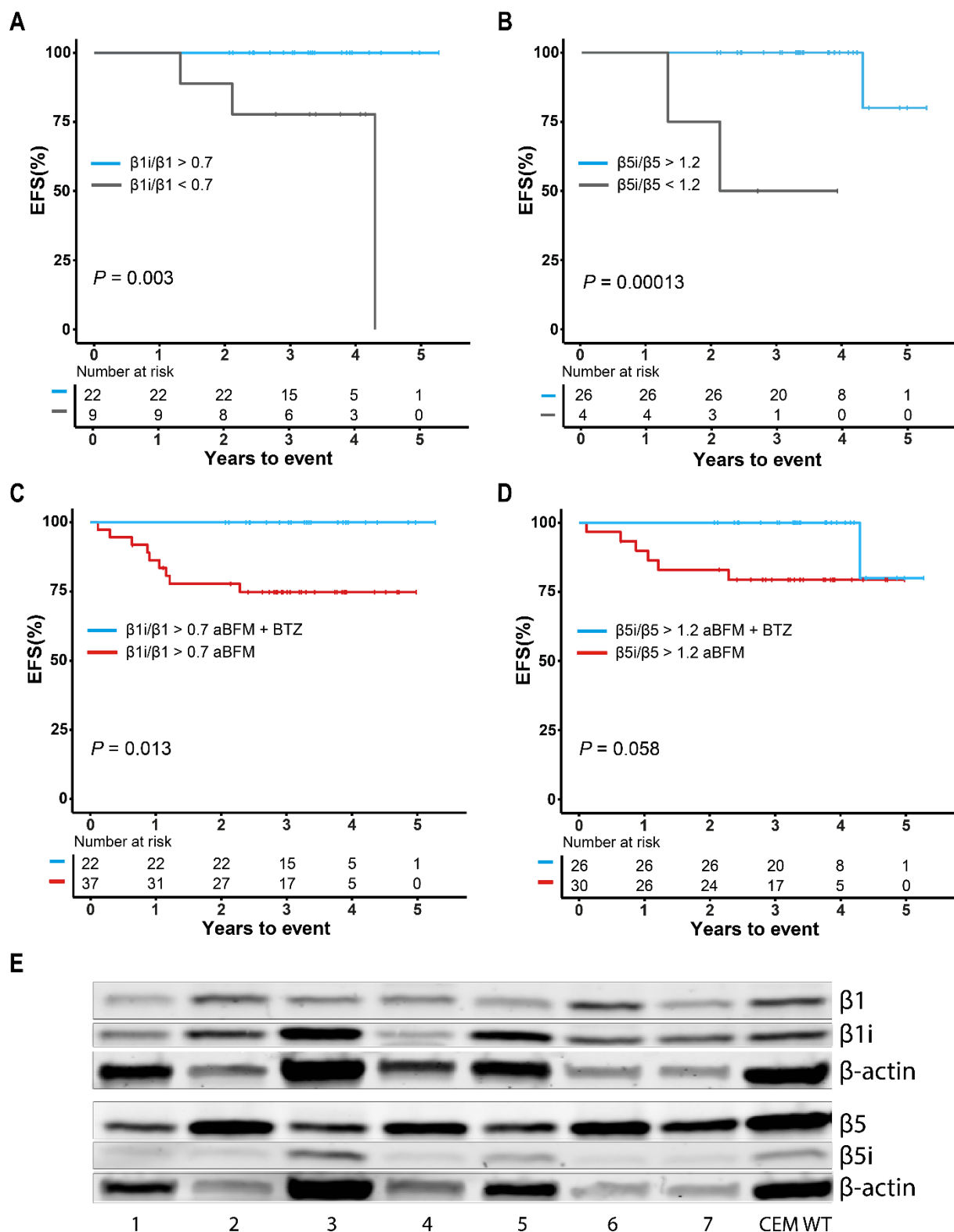
Received: June 27, 2024.
Accepted: January 17, 2025.
Early view: January 30, 2025.

©2025 Ferrata Storti Foundation
Published under a CC BY-NC license 

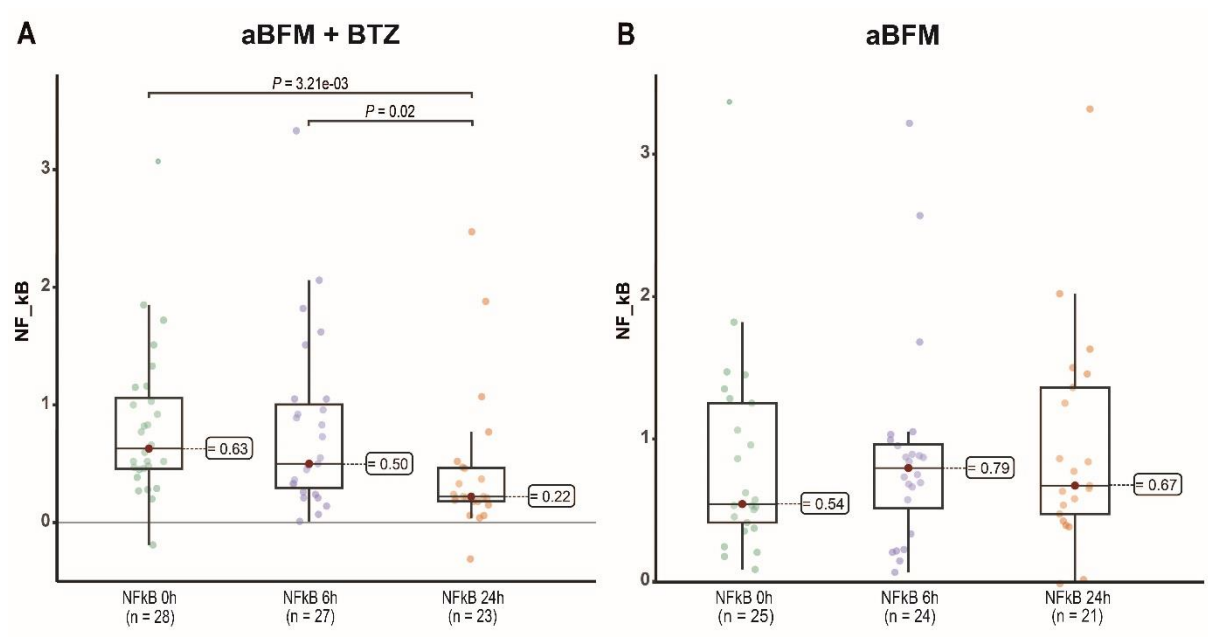
DATA SUPPLEMENT



Supplemental Figure S1. Proteasome subunit catalytic activity analysis. (A) Correlation between baseline β1i- and β5i-associated catalytic activity, measuring slopes as arbitrary fluorescent units/minute (FU/min), in protein extracts of primary T-ALL patients. **(B)** EFS for patients stratified by β5i activity in patients not receiving BTZ.



Supplemental Figure S2 Proteasome subunit expression analysis. (A-B) EFS in patients receiving BTZ stratified by subunit expression ratio's (A) $\beta 1i/\beta 1$ expression ratio, and (B) $\beta 5i/\beta 5$ expression ratio. (C-D) EFS stratified by treatment arm for patients with (C) high $\beta 1i/\beta 1$ expression ratio, and (D) high $\beta 5i/\beta 5$ expression ratio. (E) Representative blot of Western Blot analysis of cP and iP expression in seven patient samples and one internal control (BTZ-sensitive T-ALL cell line CEM/WT).



Supplemental Figure S3 NFkB-activity. NFkB-activity before treatment (0h), at 6 hours and 24 hours after **(A)** aBFM+BTZ treatment, **(B)** aBFM treatment. Number in boxes depict median.