

Non-myeloma light chain cast nephropathy: a multicenter retrospective study on clinicopathological characteristics

Authors

Ana Cristina Martins,^{1,2} Jean-Baptiste Gibier,³ Charles Ronsin,⁴ Christine Kandel-Aznar,⁵ Anne Moreau,^{5,6} Marion Chapal,⁷ Diogo Francisco,^{1,2} Hamza Sakhi,^{8,9} Julie Oniszczyk,¹⁰ Lorraine Gueguen,¹¹ Anne Grunenwald,¹² Mathilde Devaux,¹³ Alexandre Karras,^{9,14} Virginie Royal,¹⁵ Marion Rabant,^{1,9} Viviane Gnemmi,³ Jérôme Olagne,^{16,17#} Jean-Paul Duong Van Huyen^{1,9#} and Pierre Isnard^{1,9#}

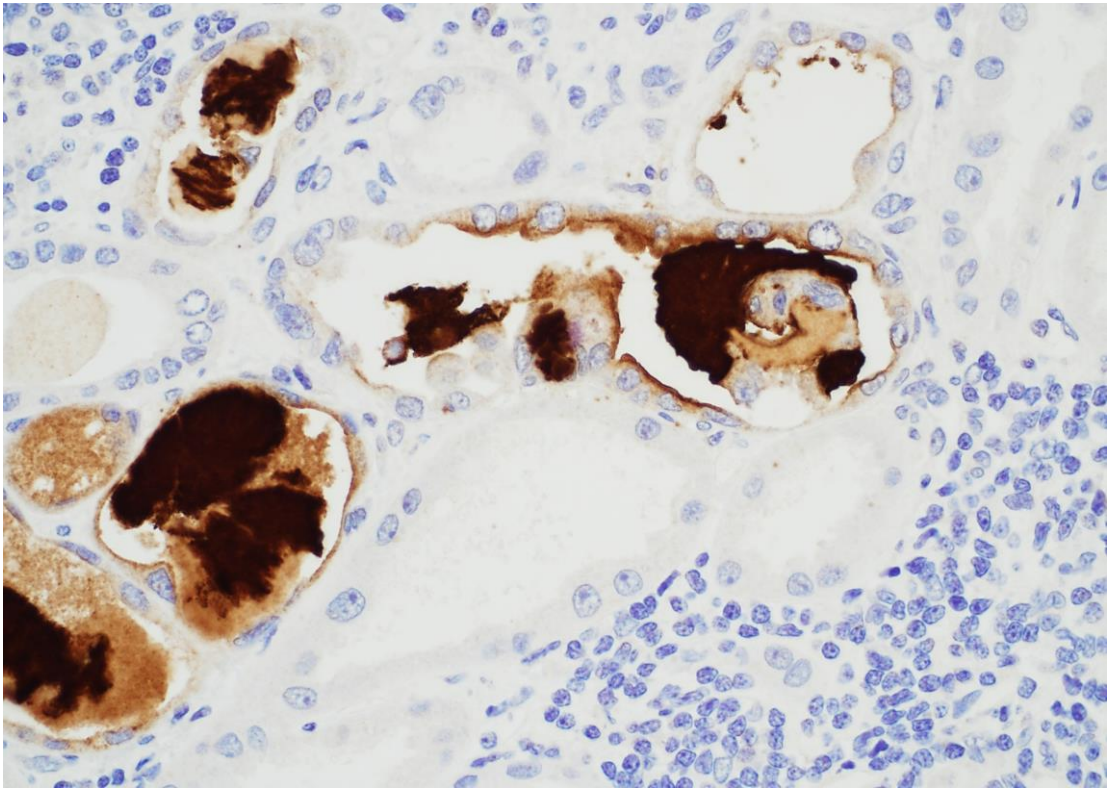
¹Department of Pathology, Necker-Enfants Malades and Robert Debré University Hospital, APHP, Paris, France; ²Nephrology and Kidney Transplantation Department, Centro Hospitalar de Lisboa Ocidental, Lisbon, Portugal; ³Department of Pathology, Lille University Hospital, Lille, France; ⁴Department of Nephrology, Nantes University Hospital, Nantes, France; ⁵Department of Pathology, Nantes University Hospital, Nantes, France; ⁶Department of Pathology, Centre Hospitalier Départemental de Vendée, La Roche sur Yon, France; ⁷Department of Nephrology, Centre Hospitalier Départemental de Vendée, La Roche sur Yon, France; ⁸Department

of Nephrology, Necker University Hospital, Paris, France; ⁹Paris-Cité University, Paris, France; ¹⁰Department of Nephrology, Foch Hospital, Suresnes, France; ¹¹Department of Nephrology, Ta'aone Hospital, Tahiti, French Polynesia; ¹²Department of Nephrology, Poissy Hospital, Poissy, France; ¹³Department of Internal Medicine, Poissy Hospital, Poissy, France; ¹⁴Department of Nephrology, Georges Pompidou European University Hospital, Paris, France; ¹⁵Department of Pathology, Maisonneuve-Rosemont Hospital, Montréal University, Montréal, Quebec, Canada; ¹⁶Department of Nephrology and Transplantation, Strasbourg University Hospital, Strasbourg, France and ¹⁷Department of Pathology, Strasbourg University Hospital, Strasbourg, France

#JO, J-PDVH and PI contributed equally as senior authors.

Correspondence:
P. ISNARD E - pierre.isnard@aphp.fr

<https://doi.org/10.3324/haematol.2024.285031>



Supplementary Figure 1: Immunohistochemistry of uromodulin

Representative image of immunohistochemistry targeting uromodulin showing its association to casts identified in the lumen of tubular sections.