

# Lenalidomide, rituximab, and methotrexate are effective in newly diagnosed primary central nervous system lymphoma

## Authors

---

Xianggui Yuan,<sup>1\*</sup> Yaping Xie,<sup>2\*</sup> Nengwen Xu,<sup>3\*</sup> Hui Liu,<sup>1</sup> Panpan Chen,<sup>1</sup> Aiqi Zhao,<sup>1</sup> Yun Liang<sup>1</sup> and Wenbin Qian<sup>1,4</sup>

<sup>1</sup>Department of Hematology, the Second Affiliated Hospital, Zhejiang University School of Medicine, Hangzhou; <sup>2</sup>Department of Hematology, the Affiliated Hangzhou First People's Hospital, Zhejiang University School of Medicine, Hangzhou; <sup>3</sup>Department of Hematology, the Lishui Hospital, Zhejiang University School of Medicine, Lishui and <sup>4</sup>National Clinical Research Center for Hematologic Diseases, the First Affiliated Hospital of Soochow University, Suzhou, China

*\*XY, YX and NX contributed equally as first authors.*

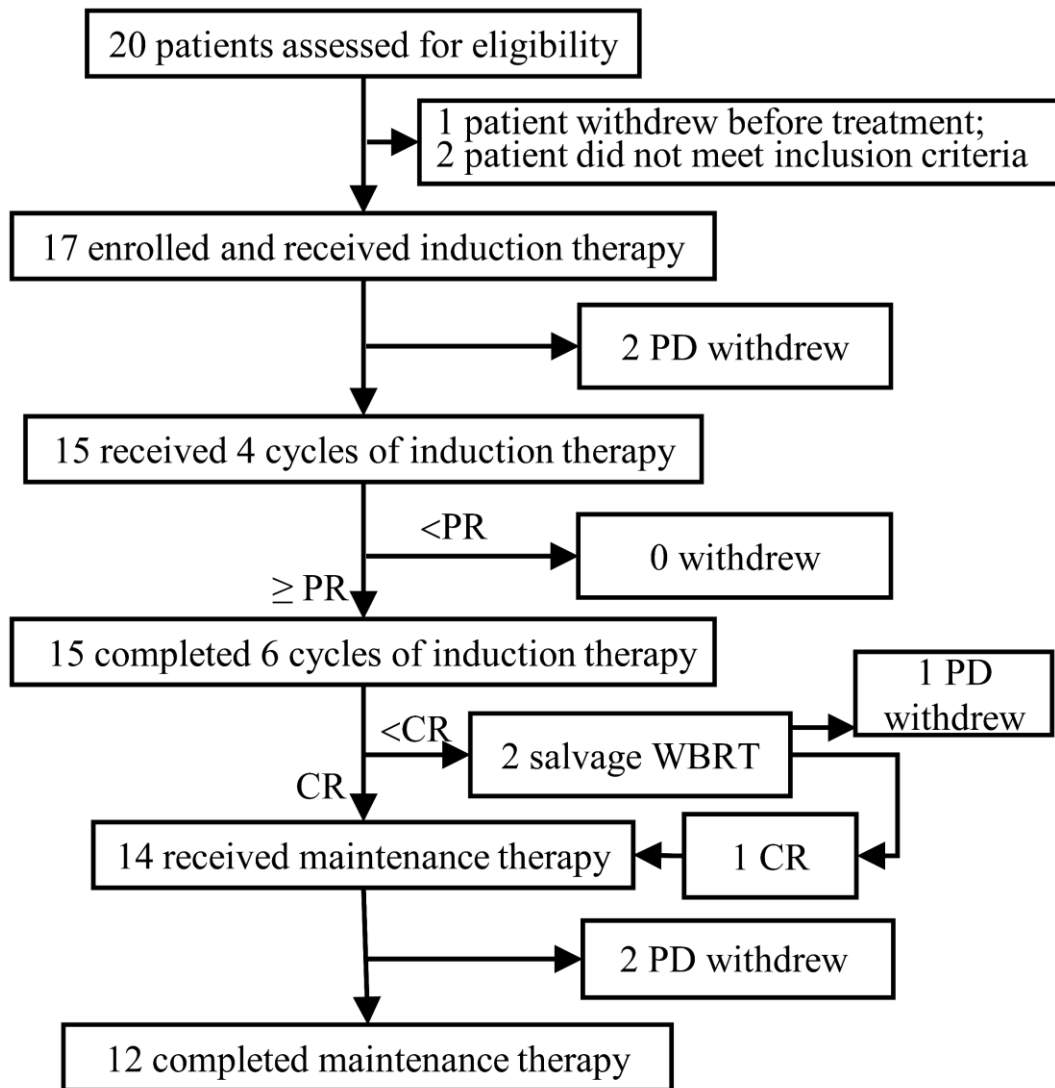
Correspondence:

W.-B. QIAN - qianwb@zju.edu.cn

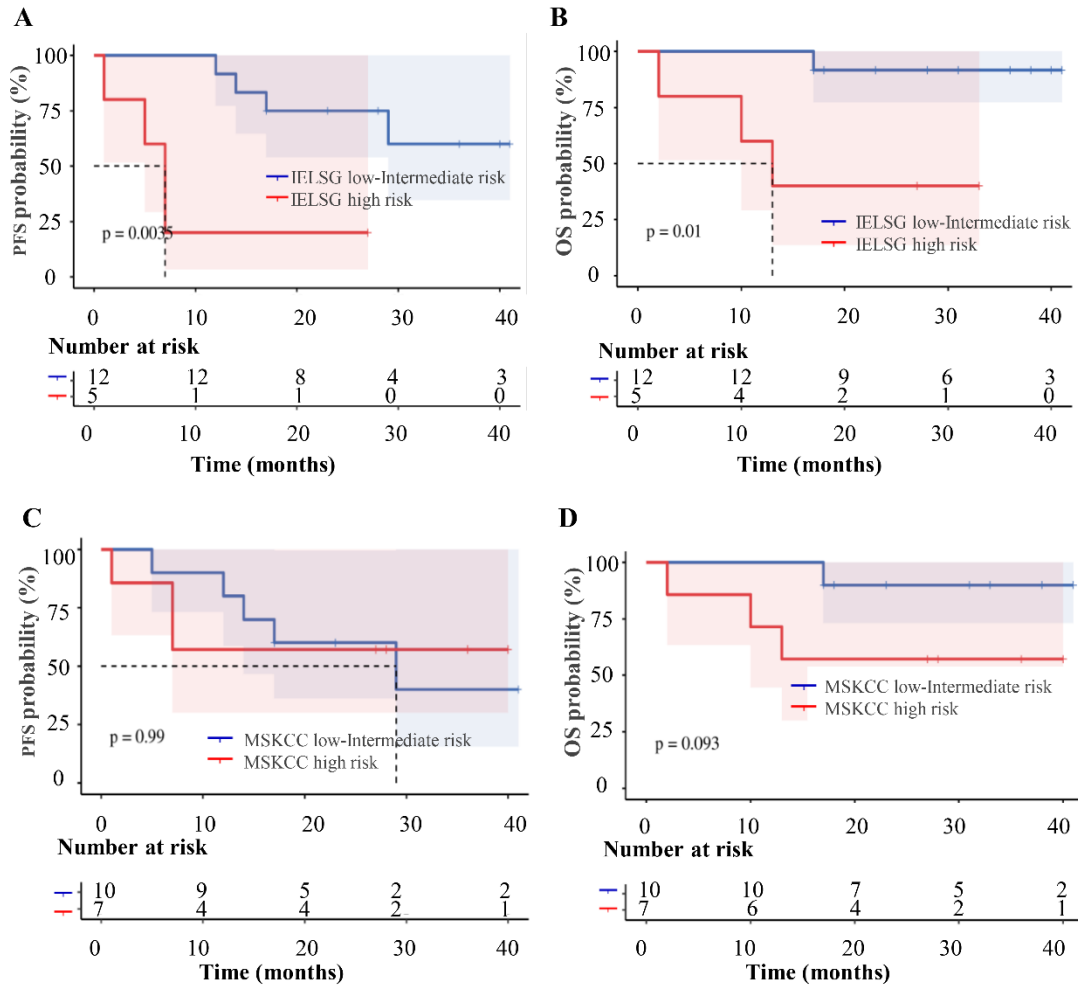
Y. LIANG - liangyun@zju.edu.cn

<https://doi.org/10.3324/haematol.2023.284834>

**Supplementary material**



**Supplementary Figure S1. Study flow diagram**



**Supplementary Figure S2. Survival curves.**

(A) Subgroup analysis of PFS based on International Extranodal Lymphoma Study Group (IELSG) risk stratification. (B) Subgroup analysis of OS based on IELSG risk stratification. (C) Subgroup analysis of PFS based on Memorial Sloan-Kettering Cancer Center (MSKCC) risk stratification. (D) Subgroup analysis of OS based on MSKCC risk stratification.