

Characterization and clinical impact of the tumor microenvironment in post-transplant aggressive B-cell lymphomas

Suvi-Katri Leivonen,^{1,2,3} Terhi Friman,⁴ Matias Autio,^{1,2,3} Samuli Vaittinen,⁵ Andreas Wind Jensen,⁶ Francesco d'Amore,⁶ Stephen Jacques Hamilton-Dutoit,⁷ Harald Holte,⁸ Klaus Beiske,⁹ Panu E. Kovanen,¹⁰ Riikka Rätty⁴ and Sirpa Leppä^{1,2,3}

¹Applied Tumor Genomics Research Program, Medical Faculty, University of Helsinki, Helsinki, Finland; ²Department of Oncology, Helsinki University Hospital Comprehensive Cancer Center, Helsinki, Finland; ³iCAN Digital Precision Cancer Medicine Flagship, Helsinki, Finland;

⁴Department of Hematology, Helsinki University Hospital Comprehensive Cancer Center and University of Helsinki, Helsinki, Finland; ⁵Department of Pathology, Turku University Hospital, University of Turku, Turku, Helsinki, Finland; ⁶Department of Hematology, Aarhus University Hospital, Aarhus, Denmark; ⁷Institute of Pathology, Aarhus University Hospital, Aarhus, Denmark; ⁸Department of Oncology, Oslo University Hospital, Oslo, Norway; ⁹Department of Pathology, Institute for Cancer Research, Oslo University Hospital, Oslo, Norway and ¹⁰Department of Pathology, University of Helsinki, and HUSLAB, Helsinki University Hospital, Helsinki, Finland


Correspondence: S. Leppä
sirpa.leppa@helsinki.fi

Received: January 26, 2023.

Accepted: May 23, 2023.

Early view: June 1, 2023.

<https://doi.org/10.3324/haematol.2023.282831>

Published under a CC BY license 

Supplementary Data

Characterization and clinical impact of the tumor microenvironment in post-transplant aggressive B-cell lymphoma

Leivonen S-K. et al.

Supplementary Methods

Patients and samples

The PTLD cohort consisted of aggressive B-cell lymphomas (PT-ABCLs), including DLBCL, high-grade B-cell lymphoma, Burkitt lymphoma and primary central nervous system lymphoma (PCNSL), classified according to the WHO classification of the lymphoid neoplasms (2016 revision)¹. Precise classification according to the newest version of the WHO 5th edition² or International Consensus Classification³ would require genetic analysis. However, in many cases material was limited, and these studies could not be performed.

Of the PT-ABCL patients, 53 were treated with rituximab, comprising ten patients with rituximab monotherapy, one with rituximab in combination with radiotherapy, and 42 with a combination of rituximab and cytotoxic treatment. Thirteen patients were treated with different combinations of cytotoxic therapy with or without radiotherapy (in some cases in combination with surgery). Five patients died of PTLD before the treatment started. One patient had a spontaneous regression on reduction of immunosuppression and did not receive any further treatment. One patient was treated with graftectomy followed by re-transplantation (PT-ABCL allocated only to the transplanted organ). One patient received antiviral treatment and intravenous immunoglobulin along with tapering of immunosuppression. No information was available concerning the treatment of one patient.

Gene expression profiling

For RNA isolation, either two to three 20 μ m sections or two 1 mm punches from formalin-fixed paraffin-embedded (FFPE) lymphoma blocks were processed with RecoverAll™ Total Nucleic Acid Isolation Kit for FFPE (Life Technologies, Thermo Fisher Inc., Waltham, MA) according to manufacturer's instructions. Thereafter, a total of 100 ng of RNA was hybridized with the 770-gene Human PanCancer Immunoprofiling Panel codeset (XT-CSO-HIP1-12, NanoString Technologies, Seattle, WA) and analyzed with the nCounter Digital Analyzer system (Nanostring Technologies). The quality of the data was confirmed by using the default quality control settings in nSolver 4.0 software (NanoString Technologies). Thereafter, the data were normalized using the geNorm algorithm⁴ and log₂ transformed for subsequent analyzes, which were performed by R version 4.0.2. Genes expressed in <15% of the samples, based on negative control geometric mean thresholding, were filtered out from the analyzes. This resulted in a final dataset of 616 genes.

Multiplex immunohistochemistry

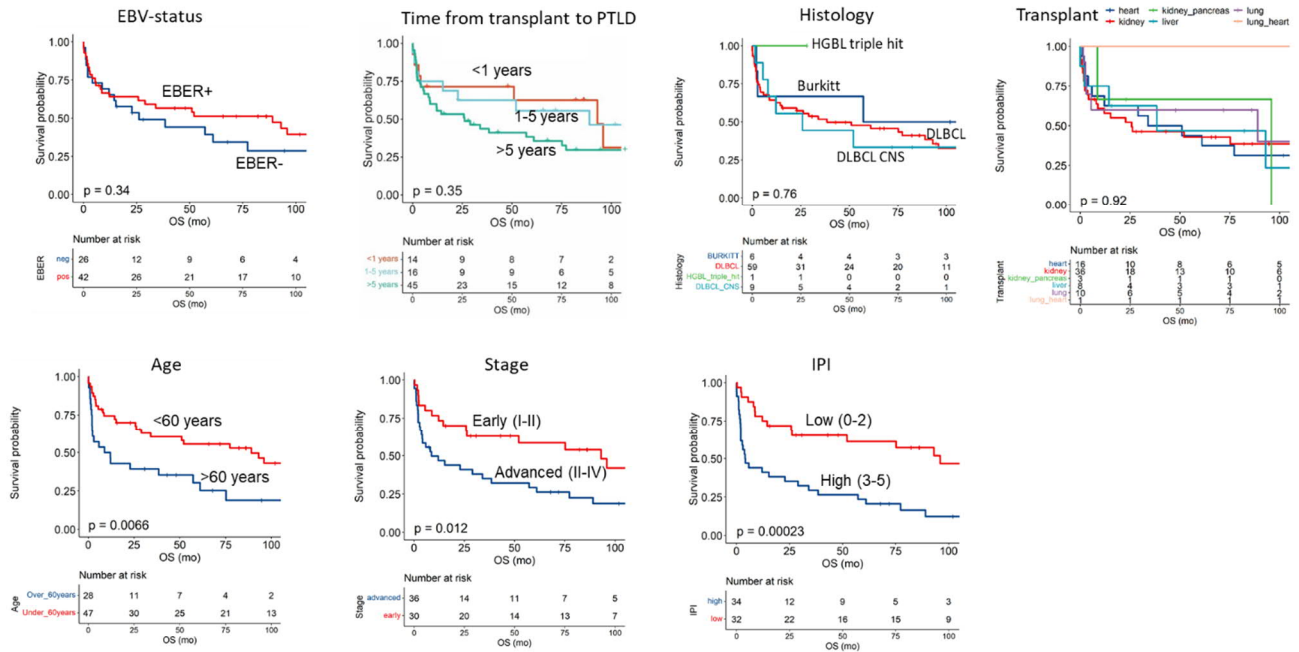
Tissue microarray (TMA) was available for seven PT-ABCL patient samples included in this study. Multiplex immunohistochemistry (mIHC) staining and imaging were done as previously described^{5, 6}. To profile the main immune cell types we used primary antibodies for CD3 (MA5-14482, Thermo Fisher Scientific, Madison, WI), CD4 (ab133616, Abcam, Cambridge, UK), CD8 (M7103, Dako, Agilent Technologies, Santa Clara, CA), CD68 (M0876, Dako), and CD20 (MS340, Thermo Fisher Scientific) coupled with Alexa-647 and Alexa-750 labeled secondary antibodies. Nuclei were counterstained with DAPI. Quantification of the fluorescent images was done using Ilastik v.1.3.3 and CellProfiler v.3.1.8 softwares.

References

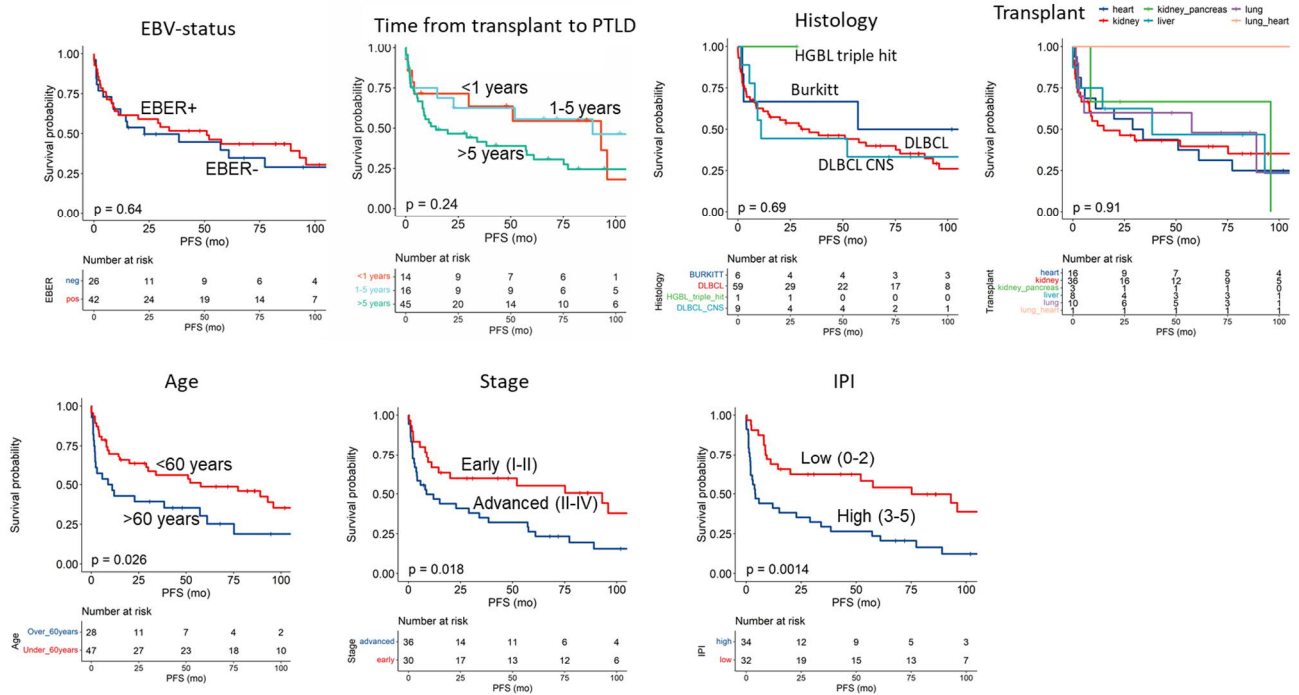
1. Swerdlow SH, Campo E, Pileri SA, et al. The 2016 revision of the World Health Organization classification of lymphoid neoplasms. *Blood*. 2016;127(20):2375-2390.
2. Alaggio R, Amador C, Anagnostopoulos I, et al. The 5th edition of the World Health Organization Classification of Haematolymphoid Tumours: Lymphoid Neoplasms. *Leukemia*. 2022;36(7):1720-1748.
3. Campo E, Jaffe ES, Cook JR, et al. The International Consensus Classification of Mature Lymphoid Neoplasms: a report from the Clinical Advisory Committee. *Blood*. 2022;140(11):1229-1253.
4. Vandesompele J, De Preter K, Pattyn F, et al. Accurate normalization of real-time quantitative RT-PCR data by geometric averaging of multiple internal control genes. *Genome Biol*. 2002;3(7):RESEARCH0034.
5. Autio M, Leivonen SK, Bruck O, et al. Immune cell constitution in the tumor microenvironment predicts the outcome in diffuse large B-cell lymphoma. *Haematologica*. 2021;106(3):718-729.
6. Autio M, Leivonen SK, Bruck O, Karjalainen-Lindsberg ML, Pellinen T, Leppa S. Clinical Impact of Immune Cells and Their Spatial Interactions in Diffuse Large B-Cell Lymphoma Microenvironment. *Clin Cancer Res*. 2022;28(4):781-792.

Supplementary Figures

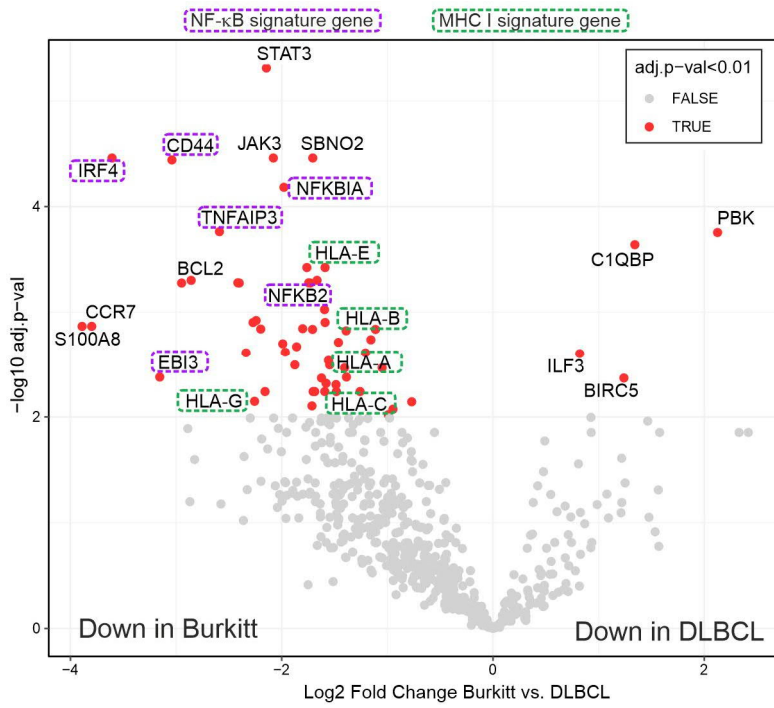
A



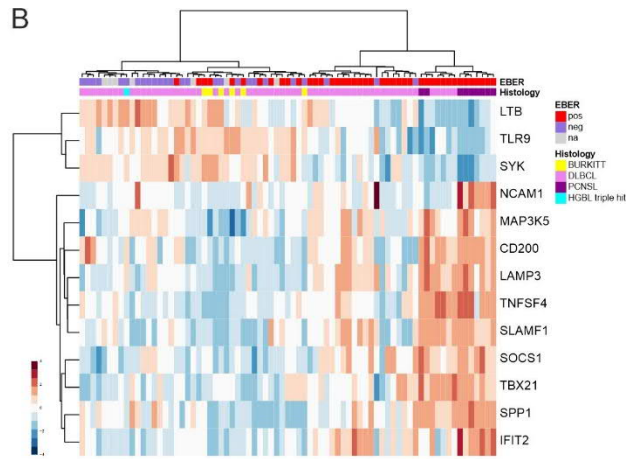
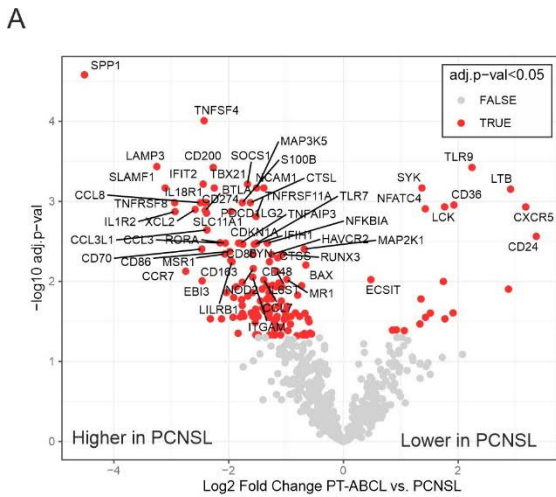
B



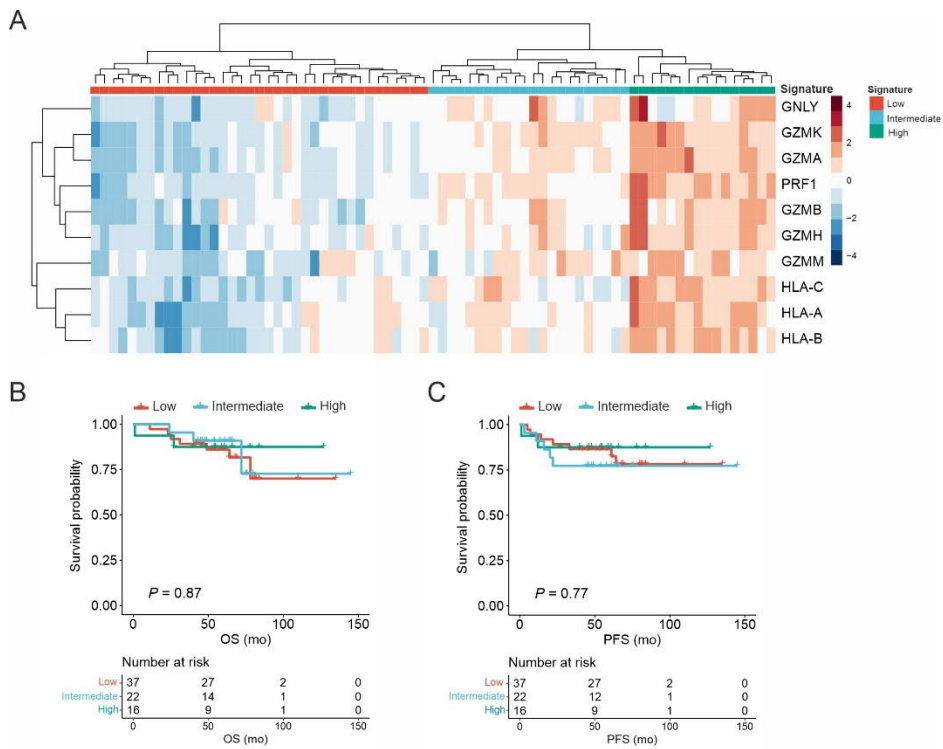
Supplementary Figure S1. Kaplan-Meier plots visualizing the effect of distinct clinical parameters on the A) overall survival (OS) and B) progression-free survival (PFS) of PT-ABCL patients.



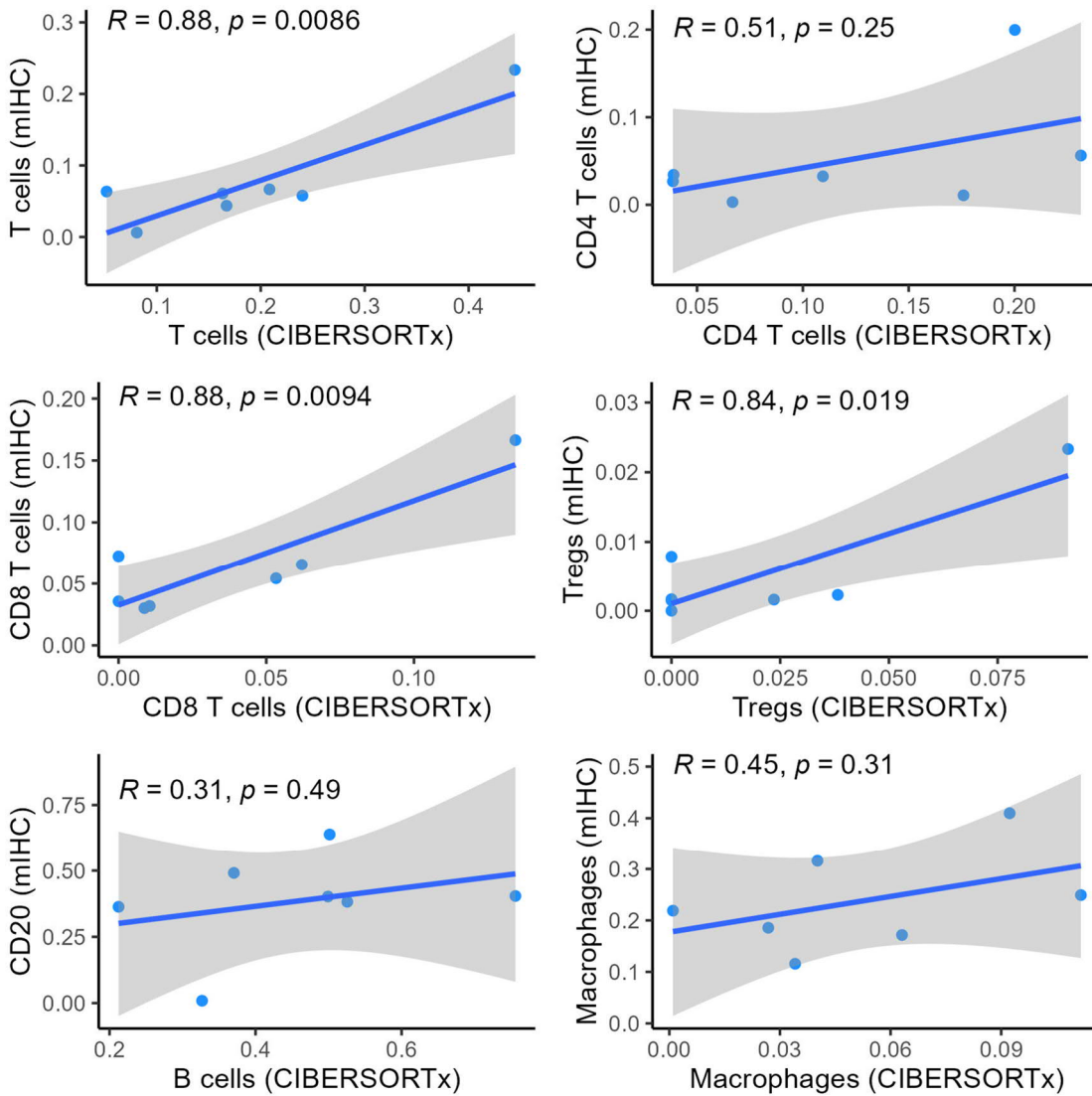
Supplementary Figure S2. Differentially expressed genes between Burkitt-PTLD and DLBCL-PTLD. A volcano plot showing differentially expressed genes in Burkitt-PTLDs as compared to DLBCL-PTLDs. The genes with log₂ fold change <0 have lower expression in Burkitt-PTLD, whereas the genes with log₂ fold change >0 have higher expression in Burkitt-PTLD. Genes belonging to the NF-κB target gene signature, or MHC I signature are highlighted in the plot.



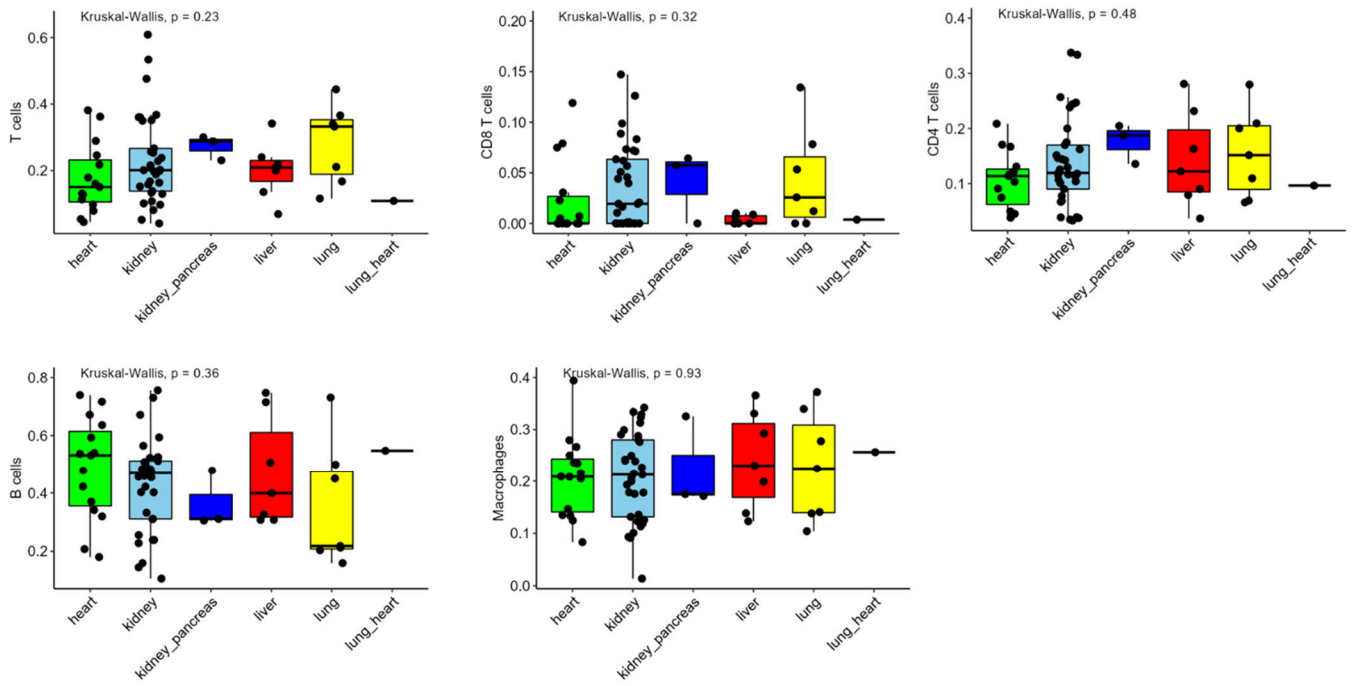
Supplementary Figure S3. Differentially expressed genes between PT-PCNSL and systemic PT-ABCL. A) A volcano plot showing differentially expressed genes in PCNSL-PTLDs as compared to systemic PT-ABCLs. The genes with log2 fold change >0 have lower expression in PCNSL-PTLD, whereas the genes with log2 fold change <0 have higher expression in PCNSL-PTLD. B) Unsupervised hierarchical clustering of the differentially expressed genes (adj. P <0.001).



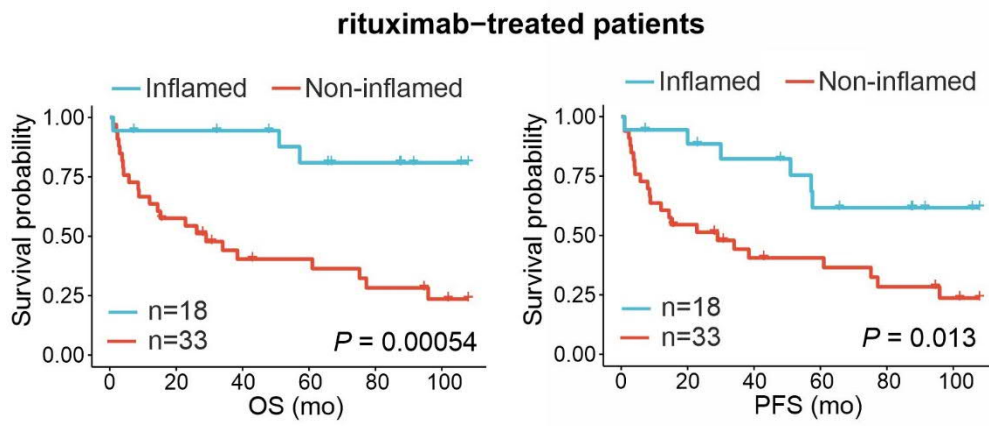
Supplementary Figure S4. Cytotoxicity signature in immunocompetent host DLBCL. A) Heatmap showing unsupervised hierarchical clustering of genes associated with cytotoxicity. B-C) Kaplan-Meier plots with the overall survival (B) and progression-free survival (C) estimates of high, intermediate, and low expression of the cytotoxic signature. HR, hazard ratio; OS, overall survival; PFS, progression-free survival.



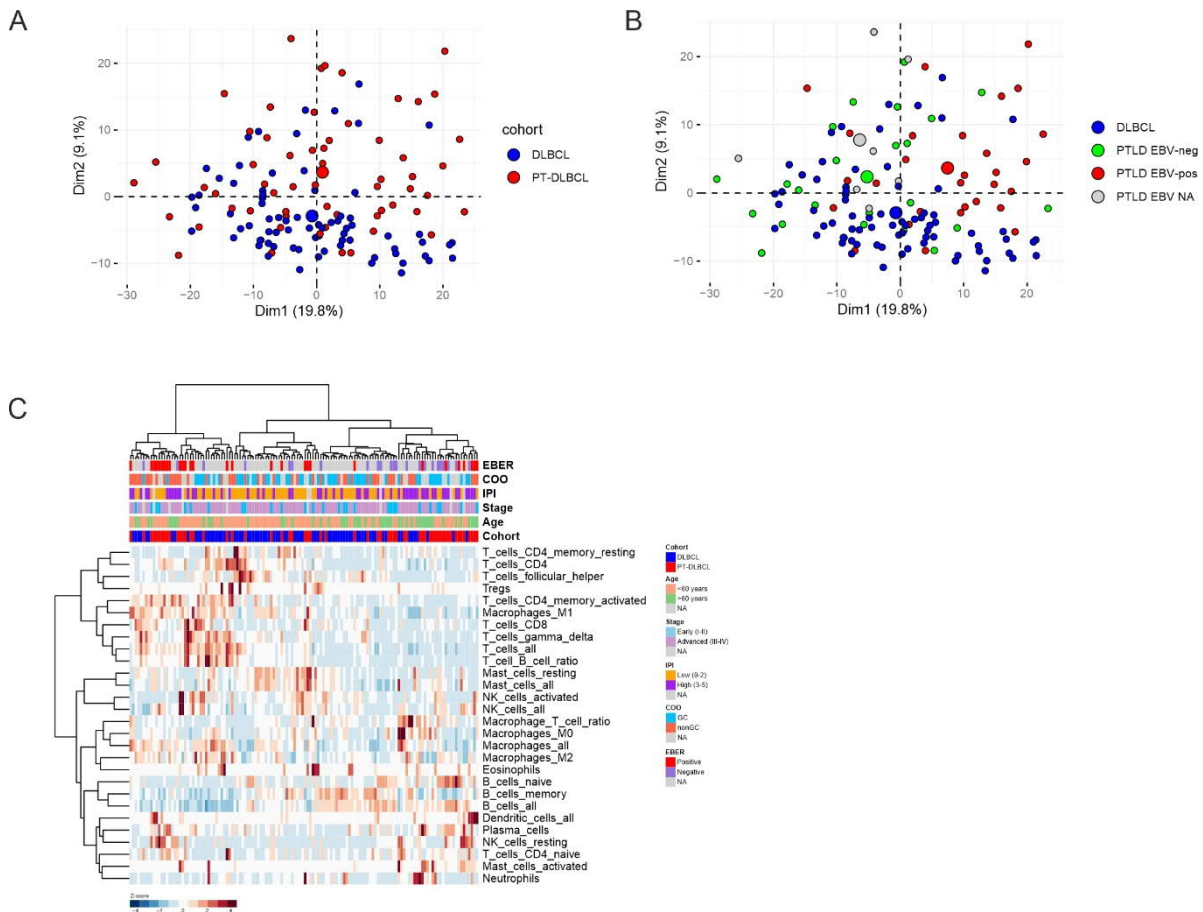
Supplementary Figure S5. Correlation between multiplex immunohistochemistry and CIBERSORTx -based immune cell proportions. Relative cell proportions determined by mIHC were correlated with the corresponding CIBERSORTx-deconvoluted cell proportions.



Supplementary Figure S6. Main immune cell types by the transplant organ. The boxplots visualize the proportions of CIBERSORTx estimates of the distinct immune cells by the transplant organ.



Supplementary Figure S7. The association of inflamed TME with survival in rituximab-treated PT-ABCL patients. Kaplan-Meier overall survival (OS) and progression-free survival (PFS) estimates of the inflamed and non-inflamed TME subclusters of the rituximab-treated patient subset.



Supplementary Figure S8. Comparison of PT-DLBCL and DLBCLs of immunocompetent patients. A-B) Principal component analysis (PCA) showing clustering of PT-DLBCL and DLBCL samples coloured by the cohort (A) or EBV-status (B). C) Unsupervised clustering of the CIBERSORTx deconvoluted immune cells in PT-DLBCL and DLBCL.

Supplementary Tables

Supplementary Table S1: Differentially expressed genes between EBER-positive vs. EBER-negative PT-ABCLs (limma analysis results, adj. $P < 0.05$)

Gene	log2FC	AveExpr	t	P.Value	adj.P.Val	B
CXCR5	-2.82309	8.469658	-6.58303	1.22E-08	7.54E-06	9.634178
CD83	-1.94813	10.44396	-5.95977	1.39E-07	4.27E-05	7.32568
CD79B	-1.71024	11.42287	-5.17797	2.69E-06	0.000552	4.512649
NFATC1	-1.54794	8.317799	-5.03621	4.54E-06	0.000699	4.016779
ISG15	1.683606	9.247582	4.86865	8.37E-06	0.001032	3.437712
BCL6	-1.23485	9.003415	-4.62425	2.02E-05	0.002046	2.608127
IL18	-1.19222	7.912856	-4.58449	2.32E-05	0.002046	2.474996
TNFRSF17	1.676808	8.46528	4.446591	3.78E-05	0.002912	2.017485
LTB	-1.8569	9.421435	-4.41042	4.29E-05	0.002938	1.898618
PAX5	-1.21033	9.209441	-4.29103	6.50E-05	0.00365	1.509715
PSMB10	0.562185	10.0861	4.289132	6.54E-05	0.00365	1.503582
TNFRSF8	1.993954	6.819551	4.254971	7.36E-05	0.00365	1.393348
CXCL11	1.681631	7.758169	4.210773	8.56E-05	0.00365	1.251415
HLA-DMB	-0.78388	10.28192	-4.20863	8.62E-05	0.00365	1.244544
SYK	-0.85082	9.996212	-4.19979	8.89E-05	0.00365	1.216255
CARD11	-1.16178	9.148729	-4.06179	0.000142	0.005464	0.77889
CD97	1.028701	9.333952	4.013552	0.000167	0.006045	0.627941
CCR1	1.154155	7.412718	3.993082	0.000179	0.006114	0.564186
TNFRSF13C	-1.47241	9.341966	-3.87123	0.000267	0.008452	0.188584
CCL3	1.435381	8.637186	3.863389	0.000274	0.008452	0.164647
SIGLEC1	1.365929	8.425686	3.783421	0.000356	0.009782	-0.07781
ITGA4	0.848106	9.091056	3.783266	0.000356	0.009782	-0.07828
CD1C	-1.35804	5.846901	-3.77356	0.000368	0.009782	-0.1075
MX1	1.592679	10.19926	3.761987	0.000382	0.009782	-0.14228
MIF	0.617414	12.05824	3.750025	0.000397	0.009782	-0.17816
TNF	-1.14312	7.207071	-3.71071	0.000451	0.010677	-0.29558
CD37	-0.90686	9.090525	-3.6597	0.000531	0.011963	-0.4468
CD70	1.664535	8.735203	3.652047	0.000544	0.011963	-0.46938
CDKN1A	1.238002	8.794884	3.605469	0.000631	0.013393	-0.60613
BST2	0.721698	10.04958	3.59032	0.000661	0.013582	-0.65036
HLA-C	0.86659	12.73288	3.54505	0.000763	0.015076	-0.78185
DUSP4	1.354783	7.674472	3.536637	0.000783	0.015076	-0.80616
SLAMF7	1.477628	8.610701	3.511083	0.000848	0.015762	-0.87979
GPI	0.485063	10.23215	3.483706	0.000924	0.015762	-0.95828
RORA	1.34863	7.434088	3.471511	0.00096	0.015762	-0.99311
REL	-0.97411	9.359927	-3.4653	0.000978	0.015762	-1.01083
CCL3L1	1.385916	8.429212	3.463273	0.000984	0.015762	-1.0166
HLA-DMA	-0.64662	10.90741	-3.46138	0.00099	0.015762	-1.02198
HLA-DOB	-1.14577	8.504511	-3.45885	0.000998	0.015762	-1.02919
GZMH	1.359828	7.190774	3.414264	0.001145	0.017299	-1.15556
IDO1	1.775507	8.679523	3.408475	0.001166	0.017299	-1.17188
ITGAL	0.7711	9.56037	3.403179	0.001185	0.017299	-1.1868

<i>INPP5D</i>	-0.5427	9.541458	-3.39696	0.001208	0.017299	-1.20431
<i>IL4R</i>	-0.67607	9.314088	-3.38734	0.001244	0.017411	-1.23133
<i>PNMA1</i>	0.493716	7.613415	3.354058	0.001377	0.01883	-1.32444
<i>IFI35</i>	0.969382	8.010754	3.347083	0.001406	0.01883	-1.34388
<i>OAS3</i>	1.189584	8.26013	3.261993	0.001818	0.023826	-1.57874
<i>CD48</i>	0.79922	9.842579	3.251322	0.001877	0.024087	-1.6079
<i>IFIT2</i>	1.118952	6.988297	3.234844	0.001972	0.024559	-1.65279
<i>IL2RB</i>	1.374052	9.049576	3.23114	0.001993	0.024559	-1.66286
<i>TBX21</i>	1.12226	7.157147	3.205701	0.00215	0.025758	-1.73181
<i>IL12RB1</i>	0.673816	8.378842	3.201907	0.002174	0.025758	-1.74206
<i>FCGR3A</i>	1.292972	9.446034	3.175966	0.002348	0.027287	-1.81191
<i>CD38</i>	0.920631	9.094814	3.136361	0.002638	0.030088	-1.91777
<i>IL15</i>	0.760107	6.711356	3.128191	0.002701	0.030256	-1.9395
<i>KLRD1</i>	0.793256	6.115051	3.092462	0.002998	0.032977	-2.03401
<i>BLK</i>	-1.1766	7.975364	-3.08489	0.003065	0.033118	-2.05393
<i>CCL8</i>	1.219528	7.055763	3.052255	0.003368	0.035769	-2.13944
<i>ISG20</i>	0.717247	10.11517	3.031408	0.003576	0.037101	-2.19371
<i>PRKCE</i>	-0.82587	5.887342	-3.02331	0.00366	0.037101	-2.21471
<i>GZMB</i>	1.547385	8.59741	3.021992	0.003674	0.037101	-2.21813
<i>SELPLG</i>	0.880511	7.908201	3.003457	0.003874	0.038001	-2.26604
<i>CD24</i>	-1.77376	8.772551	-2.9986	0.003928	0.038001	-2.27855
<i>C1QA</i>	1.018479	10.47323	2.996811	0.003948	0.038001	-2.28317
<i>MS4A1</i>	-1.36074	11.28421	-2.9654	0.004317	0.040551	-2.36372
<i>RUNX3</i>	0.636533	10.07637	2.963128	0.004345	0.040551	-2.36954
<i>IFI27</i>	1.283336	10.29536	2.944762	0.004576	0.041909	-2.41633
<i>RELB</i>	-0.71671	8.288034	-2.93626	0.004687	0.041909	-2.43791
<i>IRF7</i>	0.922442	8.860884	2.935733	0.004694	0.041909	-2.43925
<i>IFIH1</i>	0.781991	8.047404	2.916398	0.004957	0.043618	-2.48817
<i>TAP1</i>	0.684132	9.619054	2.895132	0.005261	0.044892	-2.54169
<i>IRF1</i>	0.706484	8.913441	2.890092	0.005335	0.044892	-2.55433
<i>HLA-A</i>	0.670886	13.23759	2.887023	0.005381	0.044892	-2.56202
<i>PSMB9</i>	0.543429	11.01555	2.882298	0.005452	0.044892	-2.57384
<i>GZMA</i>	1.027166	8.617305	2.880291	0.005483	0.044892	-2.57886
<i>IL1R2</i>	1.469087	6.675616	2.876288	0.005544	0.044892	-2.58887
<i>TAP2</i>	0.431886	10.07051	2.871959	0.005612	0.044892	-2.59967
<i>MAGEB2</i>	-1.22169	5.567949	-2.86425	0.005733	0.045276	-2.61888
<i>TLR10</i>	-0.93771	8.071251	-2.85306	0.005914	0.046112	-2.64671
<i>CCR2</i>	1.021202	6.453989	2.839041	0.006147	0.047334	-2.68143

Supplementary Table S2. Patient characteristics in the low, intermediate, and high cytotoxicity signature groups.

		Low	Intermediate	High	P-value (Fisher's exact)
Number of patients		24 (100)	23 (100)	19 (100)	
Gender	Female	5 (21)	8 (35)	7 (37)	0.444
	Male	19 (79)	15 (65)	12 (63)	
Age	<60 years	13 (54)	12 (52)	15 (79)	0.155
	≥60 years	11 (46)	11 (48)	4 (21)	
Stage	Early (I-II)	8 (33)	8 (35)	7 (37)	0.698
	Advanced (III-IV)	15 (63)	12 (52)	7 (37)	
	NA	1 (4)	3 (13)	5 (26)	
IPI	Low (0-2)	8 (33)	8 (35)	9 (47)	0.202
	High (3-5)	15 (63)	12 (52)	5 (26)	
	NA	1 (4)	3 (13)	5 (26)	
EBV-status (EBER)	Neg	14 (58)	9 (39)	3 (16)	0.002
	Pos	6 (25)	11 (48)	16 (84)	
	NA	4 (17)	3 (13)	0	
Histology	DLBCL	19 (79)	22 (96)	18 (95)	0.046
	BURKITT	5 (21)	0	1 (5)	
	HGBL triple hit	0	1 (4)	0	
Time to PTLD	<1 years	0	3 (13)	11 (57.5)	<0.001
	1-5 years	5 (21)	5 (22)	3 (16)	
	5-10 years	4 (17)	2 (9)	2 (10.5)	
	≥10 years	15 (63)	13 (57)	3 (16)	
Transplant	Kidney	12 (50)	13 (57)	7 (37)	0.570
	Liver	2 (8)	4 (17)	1 (5)	
	Heart	7 (29)	4 (17)	4 (21)	
	Lung	2 (8)	1 (4)	4 (21)	
	Multiorgan	1 (1)	1 (4)	2 (11)	
	NA	0	0	1 (5)	
Rituximab	Yes	19 (79)	17 (74)	15 (79)	0.974
	No	5 (21)	5 (22)	4 (21)	
	NA	0	1 (4)	0	
Response	CR	13 (54)	12 (52)	15 (79)	0.329
	PR	1 (4)	3 (13)	0	
	PD	4 (17)	2 (9)	0	
	No	1 (4)	1 (4)	2 (10.5)	
	NA	5 (21)	5 (22)	2 (10.5)	

NA, not assigned; IPI, international Prognostic Index; EBER, Epstein-virus-encoded small RNA; DLBCL, Diffuse large B-cell lymphoma; HGBL, high-grade B-cell lymphoma; CR, complete response; PR, partial response; SD, stable disease; PD, progressive disease

Supplementary Table S3. A-B) Cox univariable regression analysis for CIBERSORTx-estimated immune cell types in the PT-ABCL. C) Cox multivariable analysis of CIBERSORTx-estimated cell types together with IPI and rituximab-containing treatment.

A)

Overall survival (OS)		
Cell type	HR (95% CI for HR)	P-value
Mast cells activated	5.35 (1.8-16)	0.002
Dendritic cells resting	2.66 (1.3-5.5)	0.009
Tregs	0.0494 (0.003-0.81)	0.035
T cell/B cell ratio	0.946 (0.89-1)	0.048
T cells gamma delta	0.505 (0.25-1)	0.062
T cells CD8	0.467 (0.19-1.1)	0.096
T cells all	0.79 (0.6-1)	0.099
Macrophages M2	0.51 (0.23-1.1)	0.099

B)

Progression-free survival (PFS)		
Cell type	HR (95% CI for HR)	P-value
Mast cells activated	4.84 (1.7-14)	0.004
Dendritic cells resting	2.52 (1.2-5.2)	0.013
Tregs	0.0931 (0.009-0.96)	0.046
T cell/B cell ratio	0.964 (0.92-1)	0.102

C)

	OS		PFS	
	HR (95% CI for HR)	P-value	HR (95% CI for HR)	P-value
Mast cells activated	5.09 (1.53-16.90)	0.008	4.91 (1.52-15.86)	0.008
IPI (3-5)	3.42 (1.60-7.33)	0.002	2.68 (1.31-5.47)	0.007
Rituximab treatment	0.24 (0.12-0.48)	<0.001	0.28 (0.14-0.56)	<0.001
Tregs	0.02 (0.00-0.49)	0.017	0.05 (0.00-0.84)	0.038
IPI (3-5)	4.55 (2.09-9.91)	<0.001	3.38 (1.65-6.92)	0.001
Rituximab treatment	0.25 (0.12-0.51)	<0.001	0.30 (0.15-0.61)	0.001
Dendritic cells resting	1.39 (0.66-2.94)	0.382	1.42 (0.68-2.98)	0.353
IPI (3-5)	3.72 (1.75-7.92)	0.001	2.93 (1.45-5.95)	0.003
Rituximab treatment	0.28 (0.14-0.56)	<0.001	0.32 (0.16-0.64)	0.001

Supplementary Table S4. Characteristics of the patients in the sporadic DLBCL and post-transplant (PT) DLBCL cohorts.

	DLBCL N (%)	PT-DLBCL N (%)	P-value
Number of patients	75 (100)	59 (100)	
Age			0.590
<60 years	49 (65)	35 (59)	
≥60 years	22 (35)	24 (41)	
Stage			<0.001
Early (I-II)	8 (11)	20 (34)	
Advanced (III-IV)	67 (89)	30 (51)	
NA	0	9 (15)	
IPI			0.068
Low (0-2)	46 (61)	22 (37)	
High (3-5)	29 (39)	28 (47)	
NA	0	9 (15)	

Supplementary Table S5: Differentially expressed genes between PT-DLBCL and DLBCL of immunocompetent patients (limma analysis results, adj. $P < 0.05$)

	log2FC	AveExpr	t	P.Value	adj.P.Val	B
CXCR1	-1.61963	5.60808	-8.60019	1.71E-14	1.17E-11	22.47868
IGLL1	1.274375	4.283295	7.836025	1.20E-12	4.10E-10	18.36093
MAPK8	0.651261	7.270443	7.286958	2.35E-11	5.32E-09	15.48835
IL22RA1	1.088494	3.987124	6.848737	2.36E-10	4.01E-08	13.2599
ITGAE	-0.74666	6.602746	-6.59592	8.66E-10	1.18E-07	12.00406
IFIT1	1.362703	5.851753	6.394428	2.40E-09	2.70E-07	11.02029
HLA.G	-1.13889	8.555458	-6.32507	3.40E-09	2.70E-07	10.68535
IL19	0.831684	3.812963	6.284409	4.17E-09	2.70E-07	10.48991
CCL7	1.014138	4.146597	6.278325	4.30E-09	2.70E-07	10.46073
KLRC1	1.114315	5.309969	6.277689	4.31E-09	2.70E-07	10.45768
DMBT1	2.270163	5.648084	6.275389	4.36E-09	2.70E-07	10.44665
ARG2	0.942949	4.649597	6.128469	9.03E-09	5.12E-07	9.746742
CD4	-0.92524	8.302418	-6.09307	1.07E-08	5.63E-07	9.579499
MEFV	-1.21328	6.042202	-5.99714	1.72E-08	8.35E-07	9.128972
IL7	-1.0465	5.192143	-5.96967	1.96E-08	8.91E-07	9.000727
IL18	-1.06924	8.014538	-5.91073	2.61E-08	1.11E-06	8.72669
YTHDF2	-0.36413	7.759383	-5.7445	5.79E-08	2.32E-06	7.962428
VEGFA	1.209316	7.638523	5.466096	2.13E-07	8.07E-06	6.712226
CD84	-0.77418	8.891452	-5.40625	2.81E-07	1.01E-05	6.448567
CCL20	1.33287	4.9182	5.385254	3.09E-07	1.05E-05	6.356503
PLA2G1B	0.68974	3.755841	5.375996	3.23E-07	1.05E-05	6.315984
TICAM2	-0.64167	7.002253	-5.34231	3.77E-07	1.17E-05	6.16891
SMAD2	-0.44383	8.48017	-5.31935	4.18E-07	1.24E-05	6.06904
IL22RA2	1.219972	5.298521	5.234069	6.15E-07	1.74E-05	5.70045
RELB	-0.58839	7.641631	-5.193	7.39E-07	2.01E-05	5.524341
FOXP3	-1.10725	4.908931	-5.11278	1.06E-06	2.77E-05	5.183027
CD37	-0.79863	9.238307	-5.06025	1.33E-06	3.29E-05	4.961475
IFNL1	-0.90822	5.594024	-5.05738	1.35E-06	3.29E-05	4.949403
MAGEA3	1.148681	4.579706	4.941714	2.24E-06	5.26E-05	4.467201
RORC	0.858507	4.130893	4.844451	3.41E-06	7.75E-05	4.067686
GAGE1	-0.57724	3.791749	-4.76731	4.74E-06	0.000103	3.754776
IL12A	0.727308	4.834142	4.763454	4.82E-06	0.000103	3.739234
CDKN1A	0.972487	7.957458	4.685064	6.72E-06	0.000139	3.425095
ISG15	1.115501	7.221302	4.672791	7.07E-06	0.000142	3.376249
KLRD1	0.816664	5.162785	4.628718	8.50E-06	0.000165	3.201601
EPCAM	1.374291	5.943112	4.608841	9.23E-06	0.000175	3.123225
TLR1	-0.4898	8.368345	-4.54104	1.22E-05	0.000225	2.857751
TNFAIP3	0.814771	8.942367	4.507748	1.40E-05	0.000251	2.728423
IL1R2	1.316792	5.098427	4.491491	1.50E-05	0.000262	2.66553
CD34	0.66487	5.509905	4.443708	1.82E-05	0.00031	2.48165
RAG1	0.607246	3.958914	4.428974	1.93E-05	0.000315	2.425247
ABCB1	0.971582	6.062306	4.421534	1.99E-05	0.000315	2.396817
GPI	0.411446	10.06904	4.421402	1.99E-05	0.000315	2.396312
TLR5	-0.57391	4.470455	-4.38934	2.27E-05	0.000343	2.274195

<i>IL26</i>	0.745543	4.804447	4.389142	2.27E-05	0.000343	2.273457
<i>IRF4</i>	1.142972	9.757452	4.267571	3.68E-05	0.000545	1.816553
<i>BID</i>	-0.49089	5.375727	-4.22296	4.39E-05	0.000636	1.651315
<i>BST2</i>	0.555732	9.113475	4.213808	4.55E-05	0.000644	1.617597
<i>CYFIP2</i>	-0.42728	9.352199	-4.20412	4.73E-05	0.000644	1.581966
<i>OSM</i>	0.79316	5.309042	4.204032	4.73E-05	0.000644	1.581627
<i>INPP5D</i>	-0.4151	9.589336	-4.17916	5.21E-05	0.000691	1.49041
<i>KIT</i>	0.635313	4.034821	4.169325	5.41E-05	0.000691	1.454444
<i>CD70</i>	1.221022	7.365061	4.167191	5.46E-05	0.000691	1.446649
<i>CCL11</i>	1.128568	5.074409	4.166299	5.48E-05	0.000691	1.443392
<i>MASP2</i>	0.673196	4.147214	4.115678	6.66E-05	0.000825	1.25945
<i>ATG12</i>	0.517102	4.742278	4.082066	7.58E-05	0.000922	1.138277
<i>EGR2</i>	-0.75547	6.91755	-4.06993	7.94E-05	0.000949	1.094722
<i>CD1A</i>	0.618044	4.131099	4.031874	9.18E-05	0.001078	0.958771
<i>CX3CR1</i>	-0.68904	5.519371	-3.98426	0.00011	0.001269	0.790089
<i>CD3EAP</i>	0.446736	6.829585	3.9758	0.000113	0.001288	0.760285
<i>TNFRSF8</i>	1.059712	5.944635	3.970439	0.000116	0.001293	0.741423
<i>CHUK</i>	0.264126	8.02744	3.959398	0.000121	0.001307	0.70264
<i>APOE</i>	-0.7947	11.40726	-3.95476	0.000123	0.001307	0.686391
<i>IL6</i>	1.085286	4.828561	3.954696	0.000123	0.001307	0.68615
<i>VCAM1</i>	-0.71286	8.056794	-3.94359	0.000128	0.001341	0.647255
<i>LILRA5</i>	0.94809	5.496124	3.907008	0.000147	0.001504	0.519779
<i>CCR7</i>	1.18285	7.109149	3.904792	0.000148	0.001504	0.512087
<i>HLA.DRA</i>	-0.6377	13.70485	-3.86661	0.00017	0.001707	0.38011
<i>TNFRSF11A</i>	0.714557	4.089909	3.849142	0.000182	0.001794	0.320056
<i>CASP3</i>	-0.3871	8.538872	-3.82597	0.000198	0.001898	0.240751
<i>IL1RAPL2</i>	0.571791	4.420812	3.825966	0.000198	0.001898	0.240733
<i>TNFRSF12A</i>	0.651231	4.697028	3.790727	0.000225	0.002129	0.12086
<i>TFE3</i>	-0.39646	5.910247	-3.7599	0.000252	0.002348	0.016737
<i>AMICA1</i>	-0.64501	8.050964	-3.73394	0.000276	0.002544	-0.07043
<i>IRF2</i>	-0.35637	8.785483	-3.72967	0.000281	0.002549	-0.08473
<i>SPA17</i>	0.529873	6.100022	3.705588	0.000306	0.002742	-0.16506
<i>CD1C</i>	-1.12287	5.627282	-3.67767	0.000338	0.002974	-0.25767
<i>TGFB1</i>	0.389366	10.16323	3.675574	0.000341	0.002974	-0.2646
<i>IL16</i>	-0.5452	10.09741	-3.67202	0.000345	0.002974	-0.27633
<i>RRAD</i>	0.734741	4.10673	3.655173	0.000366	0.003118	-0.33188
<i>HLA.DMB</i>	-0.51305	10.28734	-3.62702	0.000405	0.003361	-0.42422
<i>CD247</i>	-0.73584	7.687275	-3.62695	0.000405	0.003361	-0.42444
<i>CTCFL</i>	0.587335	4.044996	3.612036	0.000427	0.003477	-0.47313
<i>LAMP3</i>	1.040515	5.977611	3.608926	0.000431	0.003477	-0.48326
<i>IRF8</i>	-0.62883	8.988371	-3.60712	0.000434	0.003477	-0.48915
<i>CD53</i>	-0.43679	11.64335	-3.59771	0.000449	0.003539	-0.51974
<i>BIRC5</i>	0.490745	8.60892	3.595468	0.000452	0.003539	-0.52702
<i>TIGIT</i>	-0.76017	7.676906	-3.5887	0.000463	0.003583	-0.54897
<i>IRF7</i>	0.609593	8.428186	3.583121	0.000472	0.003612	-0.56704
<i>RORA</i>	0.760678	6.883321	3.564613	0.000504	0.00381	-0.62683
<i>CD200</i>	-0.7234	6.468784	-3.55671	0.000518	0.003853	-0.65227
<i>RUNX1</i>	-0.40388	7.175897	-3.55043	0.000529	0.003853	-0.67248

<i>CTSH</i>	-0.59029	10.11345	-3.54977	0.00053	0.003853	-0.67459
<i>CCL22</i>	1.345655	6.81964	3.548881	0.000532	0.003853	-0.67744
<i>MICB</i>	0.317821	8.158276	3.526049	0.000576	0.00409	-0.75057
<i>TNFRSF9</i>	-0.75176	6.631332	-3.52563	0.000577	0.00409	-0.75191
<i>IL3</i>	0.493825	3.858987	3.51468	0.000599	0.004203	-0.78684
<i>HLA.DPB1</i>	-0.60832	11.68307	-3.50354	0.000622	0.004323	-0.82227
<i>MNX1</i>	0.448594	3.870545	3.475925	0.000684	0.004658	-0.90974
<i>MR1</i>	-0.38182	6.169821	-3.47592	0.000684	0.004658	-0.90974
<i>PIK3CD</i>	-0.43005	8.926989	-3.46527	0.000709	0.004783	-0.94334
<i>ICAM2</i>	0.392159	7.142096	3.445373	0.000759	0.005021	-1.00583
<i>IL8</i>	1.623886	6.023109	3.445242	0.000759	0.005021	-1.00624
<i>SPINK5</i>	0.75915	4.720207	3.435328	0.000785	0.005119	-1.03726
<i>ECSIT</i>	-0.25854	6.816551	-3.43391	0.000789	0.005119	-1.04169
<i>ITGAL</i>	-0.54884	9.341493	-3.42029	0.000827	0.00531	-1.08419
<i>PTGS2</i>	0.770438	4.694355	3.414444	0.000843	0.005333	-1.10238
<i>ZNF205</i>	0.432083	4.043852	3.413449	0.000846	0.005333	-1.10547
<i>BCL6</i>	-0.62194	9.058603	-3.3931	0.000906	0.00566	-1.16856
<i>PVR</i>	0.531628	6.396148	3.36867	0.000983	0.006087	-1.24392
<i>LY96</i>	-0.5048	7.565407	-3.36487	0.000996	0.006109	-1.25559
<i>CFB</i>	0.764832	6.405705	3.354548	0.001031	0.006267	-1.28727
<i>ICOSLG</i>	0.779478	6.831672	3.349659	0.001048	0.006314	-1.30224
<i>C9</i>	0.604789	3.959499	3.315906	0.001172	0.007	-1.40508
<i>RUNX3</i>	0.418587	9.024241	3.30843	0.001201	0.007113	-1.42774
<i>SYT17</i>	-0.51665	3.839438	-3.29081	0.001273	0.007473	-1.48099
<i>TLR10</i>	-0.59698	7.855467	-3.28094	0.001315	0.007603	-1.51068
<i>IL15</i>	0.484307	6.100339	3.279722	0.00132	0.007603	-1.51436
<i>IFI27</i>	0.882054	9.330432	3.277814	0.001329	0.007603	-1.52009
<i>C1QBP</i>	0.360723	10.06959	3.260482	0.001406	0.00798	-1.57204
<i>MAVS</i>	-0.20155	8.773937	-3.24835	0.001463	0.008167	-1.60828
<i>CCL3</i>	0.719169	7.711545	3.248293	0.001463	0.008167	-1.60844
<i>CLEC6A</i>	0.53984	4.737828	3.244194	0.001483	0.008194	-1.62066
<i>CHIT1</i>	-1.15577	7.086752	-3.24228	0.001492	0.008194	-1.62636
<i>ISG20</i>	0.511509	9.426849	3.238927	0.001508	0.008218	-1.63633
<i>PSEN1</i>	0.286744	7.592947	3.220925	0.001599	0.008643	-1.68974
<i>ADA</i>	-0.47799	8.68003	-3.20326	0.001693	0.009079	-1.7419
<i>ETS1</i>	-0.35896	10.84622	-3.20005	0.001711	0.009102	-1.75135
<i>CREBBP</i>	0.371959	5.19502	3.19645	0.001731	0.009137	-1.76195
<i>LY9</i>	-0.63994	7.086066	-3.18863	0.001775	0.009297	-1.78491
<i>SMPD3</i>	0.710697	4.411578	3.181576	0.001816	0.009438	-1.80559
<i>STAT5B</i>	-0.36098	7.669106	-3.16712	0.001902	0.009811	-1.84785
<i>TYK2</i>	0.244853	8.900936	3.140945	0.002067	0.010585	-1.92394
<i>CTSS</i>	-0.51626	11.01662	-3.10807	0.002294	0.011659	-2.01874
<i>CXCL6</i>	0.871917	5.102942	3.105342	0.002314	0.011673	-2.02656
<i>ATF1</i>	-0.17267	7.359902	-3.09732	0.002373	0.011884	-2.04953
<i>ITGB3</i>	0.76361	4.906061	3.081429	0.002495	0.012339	-2.09492
<i>BAGE</i>	-0.52963	4.579279	-3.07853	0.002518	0.012339	-2.10317
<i>CD33</i>	0.474391	5.044556	3.078416	0.002518	0.012339	-2.1035
<i>TIRAP</i>	0.344309	5.880903	3.076043	0.002537	0.012342	-2.11026

CCL23	0.416973	3.853405	3.064657	0.002629	0.012699	-2.14259
CXCR5	-0.77562	8.396105	-3.05605	0.002701	0.012953	-2.16698
TTK	0.384649	6.869234	3.031368	0.002916	0.013888	-2.23654
PTGDR2	0.357141	3.689012	3.006557	0.003149	0.01476	-2.30598
AICDA	-1.18695	6.326367	-3.00572	0.003157	0.01476	-2.30832
KIR_Inhibiting_Subgroup_2	0.470364	3.786381	3.004945	0.003164	0.01476	-2.31048
DOCK9	0.42269	7.760928	2.993226	0.00328	0.015197	-2.34309
HLA.DRB4	1.569447	6.988282	2.961689	0.003613	0.016623	-2.43029
SAA1	0.990646	6.465814	2.938111	0.003881	0.017738	-2.49496
ITGB4	0.898775	6.204844	2.933157	0.00394	0.017886	-2.50849
GZMK	-0.88007	8.879993	-2.92952	0.003983	0.017905	-2.51842
CXCL5	0.973799	4.749429	2.92844	0.003996	0.017905	-2.52135
GNLY	0.888778	7.393798	2.920089	0.004098	0.018242	-2.54408
HMGB1	-0.33189	9.872018	-2.91654	0.004142	0.018318	-2.55371
LILRA1	0.477462	5.213331	2.908203	0.004248	0.018663	-2.57633
ITGB2	-0.50657	9.323242	-2.89558	0.004412	0.019169	-2.61045
ELK1	0.280784	7.34052	2.895023	0.004419	0.019169	-2.61196
CARD11	-0.48271	8.795557	-2.89171	0.004463	0.019238	-2.62089
SLC11A1	0.763324	6.459142	2.877017	0.004664	0.019975	-2.66041
CFD	0.655978	6.116879	2.874427	0.0047	0.020004	-2.66735
KLRC2	0.667653	4.716461	2.828268	0.005389	0.022796	-2.79022
JAM3	-0.46229	6.021773	-2.82202	0.005489	0.023075	-2.8067
MS4A1	-0.77024	11.03346	-2.80065	0.005845	0.024418	-2.86288
HLA.DPA1	-0.45736	11.92334	-2.7982	0.005887	0.024444	-2.86929
NFATC1	-0.49792	7.327519	-2.7769	0.006264	0.025853	-2.92488
FLT3	-0.40564	4.108547	-2.77274	0.00634	0.02601	-2.93567
TNFSF13B	-0.55334	7.83296	-2.76144	0.006551	0.026609	-2.96497
F2RL1	0.585121	4.146035	2.760759	0.006564	0.026609	-2.96673
CSF1	-0.50517	6.35934	-2.75626	0.00665	0.026798	-2.97835
SLAMF1	0.804838	6.05533	2.745802	0.006854	0.027458	-3.00532
LCN2	1.020271	5.077509	2.740731	0.006955	0.027699	-3.01836
IL11	0.749513	4.300776	2.73107	0.007151	0.028314	-3.04315
FCER2	0.804878	5.963774	2.696367	0.007898	0.031046	-3.13154
XCR1	0.452652	5.482949	2.694822	0.007932	0.031046	-3.13545
MAGEC2	0.498782	4.470441	2.685475	0.008146	0.031699	-3.15908
IL1B	0.840092	6.07609	2.671562	0.008473	0.032721	-3.1941
MAGEA4	0.549678	3.788539	2.670266	0.008505	0.032721	-3.19736
CD81	-0.28339	12.26134	-2.6597	0.008762	0.033339	-3.22383
CEACAM6	0.92515	4.605206	2.659658	0.008763	0.033339	-3.22394
DPP4	0.493147	4.580174	2.64705	0.00908	0.034351	-3.25541
IL18R1	0.573222	6.1948	2.638581	0.009298	0.034979	-3.27648
CR2	0.771144	7.22642	2.636654	0.009348	0.034979	-3.28126
APP	0.482721	9.027216	2.624818	0.009663	0.035861	-3.31058
PTPRC	-0.54721	9.594265	-2.62384	0.009689	0.035861	-3.313
SYCP1	0.377711	3.998369	2.609834	0.010075	0.037086	-3.34752
MSR1	0.683996	6.644257	2.601852	0.010301	0.037714	-3.36713
S100B	-0.44263	4.42827	-2.59646	0.010456	0.038077	-3.38033
CXCL3	0.785067	5.218978	2.588754	0.010681	0.038691	-3.39918

<i>IL1RL1</i>	0.467511	4.958901	2.584836	0.010797	0.038905	-3.40874
<i>CXCL14</i>	-0.97897	7.084406	-2.5762	0.011058	0.039633	-3.42975
<i>SYK</i>	-0.33038	9.940215	-2.56859	0.011292	0.040071	-3.44824
<i>PPARG</i>	0.456462	4.234922	2.568398	0.011298	0.040071	-3.4487
<i>KLRB1</i>	-0.69704	5.88666	-2.55329	0.011776	0.04155	-3.48521
<i>OAS3</i>	0.533633	7.709037	2.551407	0.011837	0.04155	-3.48976
<i>RELA</i>	0.189936	7.279545	2.544452	0.012064	0.04213	-3.50649
<i>CCL13</i>	0.693901	4.81195	2.539081	0.012242	0.0423	-3.51939
<i>ADORA2A</i>	0.27333	7.479124	2.538295	0.012268	0.0423	-3.52128
<i>MAPK11</i>	0.349831	5.981651	2.537376	0.012299	0.0423	-3.52348
<i>IFI35</i>	0.412447	6.959178	2.523073	0.012786	0.043757	-3.55768
<i>RIPK2</i>	0.306107	7.543115	2.521197	0.012852	0.04376	-3.56215
<i>EGR1</i>	0.569629	6.01685	2.518997	0.012929	0.043803	-3.5674
<i>IL10RA</i>	-0.37322	9.317465	-2.51338	0.013127	0.044253	-3.58075
<i>PECAM1</i>	-0.37837	9.04603	-2.50156	0.013553	0.045465	-3.6088
<i>C5</i>	0.402283	5.015763	2.497762	0.013692	0.045707	-3.61777
<i>CMKLR1</i>	-0.36885	8.808234	-2.48743	0.014078	0.046766	-3.64215
<i>IRGM</i>	0.278522	3.689515	2.469828	0.014758	0.048786	-3.68345
<i>TNFSF14</i>	0.470456	5.532055	2.467373	0.014855	0.04887	-3.68919
<i>TLR4</i>	-0.33526	8.0575	-2.46006	0.015147	0.049593	-3.70626
<i>PAX5</i>	-0.479	9.329547	-2.45724	0.015261	0.049728	-3.71283