

Impact of central nervous system involvement in adult patients with Philadelphia-negative acute lymphoblastic leukemia: a GRAALL-2005 study

Corentin Orvain,^{1,2,3} Sylvain Chantepie,⁴ Xavier Thomas,⁵ Martine Escoffre-Barbe,⁶ Françoise Huguet,⁷ Yohan Desbrosses,⁸ Gaëlle Guillerm,⁹ Madalina Uzunov,¹⁰ Thibaut Leguay,¹¹ Sarah Barbieux,¹² Norbert Vey,¹³ Patrice Chevallier,¹⁴ Jean-Valère Malfuson,¹⁵ Stéphane Lepretre,¹⁶ Michael Baumann,^{17,18} Murat Aykut,^{18,19} Abdelaziz Chaib,²⁰ Magalie Joris,²¹ Hacène Zerazhi,²² Georg Stussi,^{18,23} Jacques Chapiro,²⁴ Céline Berthon,²⁵ Caroline Bonmati,²⁶ Eric Jourdan,²⁷ Diana Carp,²⁸ Ambroise Marçais,²⁹ Maria-Pilar Gallego-Hernanz,³⁰ Iona Vaida,³¹ Karin Bilger,³² Alban Villate,³³ Florence Pasquier,³⁴ Yves Chalandon,^{18,35} Sébastien Maury,³⁶ Véronique Lheritier,³⁷ Norbert Ifrah,^{1,2,3} Hervé Dombret,³⁸ Nicolas Boissel^{38#} and Mathilde Hunault-Berger^{1,2,3#} on behalf of the Group for Research on Adult Acute Lymphoblastic Leukemia (GRAALL, including the former France-Belgium Group or Lymphoblastic Acute Leukemia in Adults, LALA), the French Western-Eastern Group for Lymphoblastic Acute Leukemia (GOELAL), and the Swiss Group for Clinical Cancer Research (SAKK)

¹Maladies du Sang, CHU d'Angers, Angers, France; ²Fédération Hospitalo-Universitaire Grand-Ouest Acute Leukemia, FHU-GOA, France; ³Université d'Angers, Inserm UMR 1307, CNRS UMR 6075, Nantes Université, CRCI2NA, F-49000 Angers, France; ⁴Institut d'Hématologie, CHU de Caen, Caen, France; ⁵Hématologie Clinique, HCL, Centre Hospitalier Lyon Sud, Pierre Bénite, France; ⁶Hématologie Clinique, CHU de Rennes, Rennes, France; ⁷Hématologie, Centre Hospitalo-Universitaire de Toulouse, Institut Universitaire du Cancer de Toulouse-OncoPole, Toulouse-OncoPole, Toulouse, France; ⁸Hématologie Clinique, CHU de Besançon, Besançon, France; ⁹Hématologie Clinique, CHRU de Brest, Brest, France; ¹⁰Hématologie, Hôpital de la Pitié - Salpêtrière, Paris, France; ¹¹Hématologie Clinique, Hôpital du Haut-Lévêque, CHU de Bordeaux, Pessac, France; ¹²Hématologie Clinique, Centre Hospitalier de Dunkerque, Dunkerque, France; ¹³Hématologie Clinique, Institut Paoli-Calmettes, Marseille, France; ¹⁴Hématologie Clinique, CHU de Nantes, Nantes, France; ¹⁵Hématologie Clinique, Hôpital d'Instruction des Armées, Percy, France; ¹⁶Département d'Hématologie, Centre Henri-Becquerel, Rouen, France; ¹⁷Klinik für Med. Onkologie und Hämatologie, Kantonsspital St. Gallen, St. Gallen, Switzerland; ¹⁸Swiss Group for Clinical Cancer Research (SAKK), Bern, Switzerland; ¹⁹Klinik für Medizinische Onkologie und Hämatologie, Universitätsspital Zürich, Zürich, Switzerland; ²⁰Hémato-Oncologie et Médecine Interne, Centre Hospitalier du Pays d'Aix, Aix-en-Provence, France; ²¹Hématologie Clinique, CHU d'Amiens, Amiens, France; ²²Hématologie Clinique, Centre Hospitalier Henri Duffaut, Avignon, France; ²³Clinica di Ematologia, Istituto Oncologico della Svizzera Italiana, Bellinzona, Switzerland; ²⁴Onco-Hématologie, Hôpitaux Civils de Colmar, Colmar, France; ²⁵Maladies du Sang, CHU de Lille, Lille, France; ²⁶Service d'Hématologie, CHRU de Nancy, Nancy, France; ²⁷Hématologie Clinique, CHU de Nîmes, Nîmes, France; ²⁸Oncologie Médicale, Centre Hospitalier d'Orléans, Orléans, France; ²⁹Hématologie Clinique, Hôpital Necker, AP-HP, Paris, France; ³⁰Hématologie Clinique, CHU de Poitiers, Poitiers, France; ³¹Onco-Hématologie, Centre Hospitalier René-Dubos, Pontoise, France; ³²Oncologie et Hématologie, Institut de Cancérologie Strasbourg Europe (ICANS), Strasbourg, France; ³³Hématologie et Thérapie Cellulaire, CHRU de Tours, Tours, France; ³⁴Département d'Hématologie, Gustave Roussy, Université Paris-Saclay, Villejuif, France; ³⁵Department of Oncology, Hematology Division, University Hospital of Geneva and Faculty of Medicine of Geneva, Geneva, Switzerland; ³⁶Département d'Hématologie, Assistance Publique-Hôpitaux de Paris (AP-HP), Hôpital Henri Mondor, Créteil, France; ³⁷Coordination du groupe GRAALL, Centre Hospitalier Lyon Sud, Pierre Bénite, France and ³⁸Hématologie Adulte, Hôpital Saint-Louis, AP-HP, Paris, France

[#]NB and MH-B contributed equally as senior authors.

Correspondence: M. Hunault-Berger
mahunault@chu-angers.fr


Received: October 25, 2022.

Accepted: February 28, 2023.

Early view: March 9, 2023.

<https://doi.org/10.3324/haematol.2022.282332>

©2023 Ferrata Storti Foundation

Published under a CC-BY license 

Impact of central nervous system involvement in adult patients with philadelphia-negative acute lymphoblastic leukemia – a GRAALL-2005 study

Supplementary data

Supplementary Methods

High-risk patients < 55 years eligible for allogeneic SCT in first CR were defined by one or more of the following criteria: CNS involvement, a white blood cell (WBC) count of 30 G/l or higher, a CD10-negative immature immunophenotype, poor cytogenetic abnormalities (t(4;11) or other *KMT2A* gene rearrangement, t(1;19), or complex karyotype), poor early peripheral blood (PB) blast clearance, defined by a PB blast count $>1 \times 10^9/L$ at the end of the pre-phase, poor early bone marrow (BM) blast clearance, defined by $>5\%$ blasts in the BM on day 8 of induction, or late complete remission, defined by a need for salvage reinduction to achieve complete remission.¹⁸ Since the initial GRAALL-2005 publications, criteria defining high-risk patients for whom allogeneic SCT is recommended have been modified in the ongoing GRAALL-2014 trial and now only include patients with insufficient MRD response during initial treatment.

Supplementary table 1. Classification of CNS involvement. *Adapted from Winick et al.*

Classification	Definition
CNS-1	No blast in the CSF, regardless of WBC or RBC
CNS-2	
a	<5 WBC/ μ l + CC positive for blasts + < 10 RBC/ml
b	<5 WBC/ μ l + CC positive for blasts + \geq 10 RBC/ml
c	\geq 5 WBC/ μ l + CC positive for blasts + \geq 10 RBC/ml, excess WBC proportional to RBC*
CNS-3	
a	\geq 5 WBC/ μ l + CC positive for blasts + <10 RBC/ml
b	\geq 5 WBC/ μ l + CC positive for blasts + \geq 10 RBC/ml, excess WBC not proportional to RBC*
c	Clinical signs

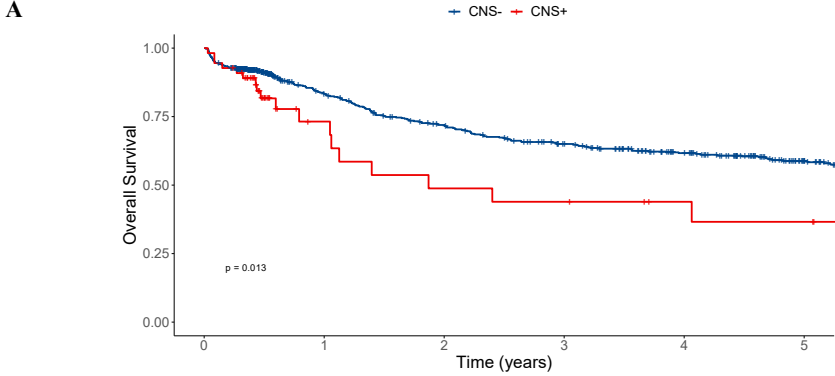
Abbreviations: CC, conventional cytospin; CNS, central nervous system; CSF, cerebrospinal fluid; RBC, red blood cells; WBC, white blood cells. *Proportional is defined as CSF WBC less than two times blood WBC.

Supplementary table 2. Characteristics of patients with CNS involvement according to randomization arm (Standard-C versus Hyper-C).

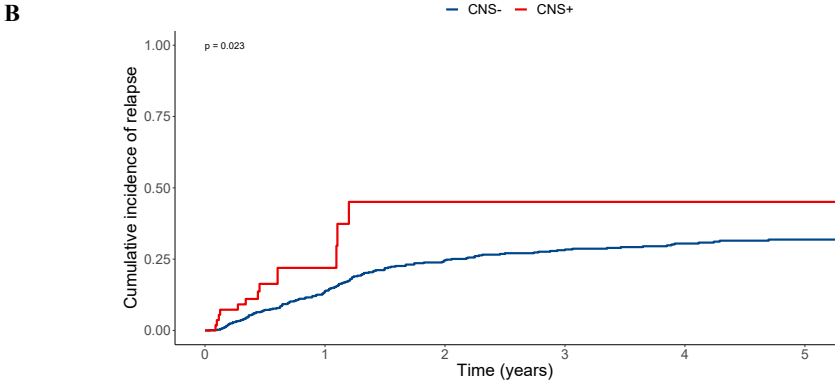
Characteristic	CNS-positive (n=55)	Standard-C (n=30)	Hyper-C (n=25)
Age, median (IQR), years	30 (24 - 44)	29 (23 - 43)	30 (27 - 53)
Female, n (%)	18 (33%)	7 (23%)	11 (44%)
BMI, median (IQR), kg/m ²	24 (21 - 26)	23 (21 - 26)	24 (22 - 27)
Phenotype, n (%)			
B-cell	27 (49%)	15 (50%)	12 (48%)
T-cell	28 (51%)	15 (50%)	13 (52%)
WBC count at diagnosis, median (IQR), G/l	23 (9 - 66)	36 (14 - 73)	18 (8 - 36)
Hemoglobin level at diagnosis, median (IQR), g/dl	11.1 (8.8 - 13)	11.1 (8.9 - 12.5)	11.1 (8.8 - 13.2)
Platelet count at diagnosis, median (IQR), G/l	78 (36 - 137)	72 (35 - 113)	94 (37 - 150)
Poor early PB blast clearance, n (%)	15 (27%)	9 (30%)	6 (24%)
Poor early BM blast clearance, n (%)	25 (46%)	12 (40%)	13 (52%)
<i>Not evaluable</i>	4	2	2
CR, n (%)	50 (91%)	28 (93%)	22 (88%)
Induction death, n (%)	3 (6%)	1 (3%)	2 (8%)
MRD1 negativity, n (%)	7 (27%)	3 (20%)	4 (36%)
<i>Not evaluable</i>	29	15	14
Allogeneic SCT in first CR, n (%)	29 (53%)	16 (53%)	14 (56%)

Abbreviations: BM, bone marrow; BMI, body mass index; CNS, central nervous system; CR, complete remission; IQR, interquartile range; PB, peripheral blood; SCT, stem cell transplantation; WBC, white blood cells.

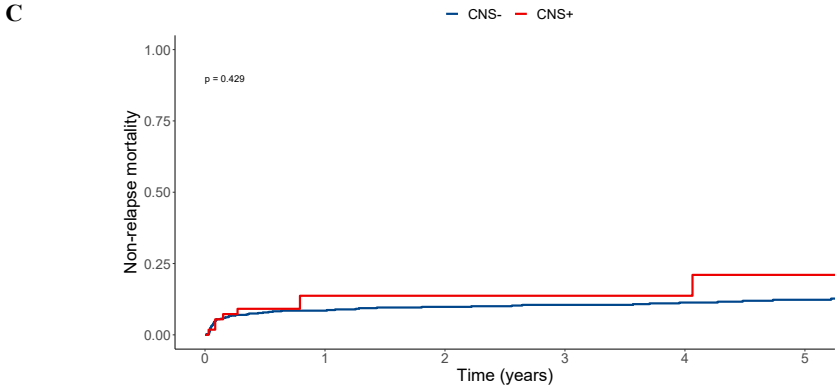
Supplementary figure 2. Overall survival (A), cumulative incidence of relapse (B), and cumulative incidence of non-relapse mortality (C) according to CNS involvement at diagnosis after censoring patients at the time of allogeneic SCT.



CNS-	729	379	315	268	216	152
CNS+	55	15	10	9	6	5

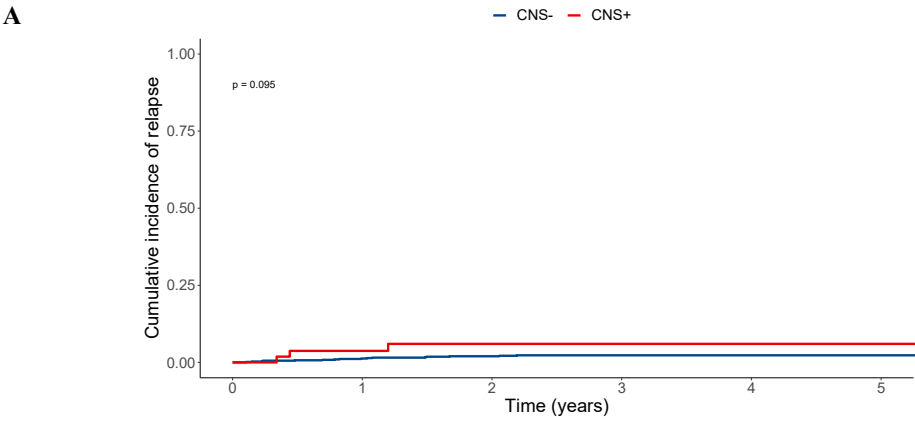


CNS-	729	309	252	223	175	126
CNS+	55	8	5	5	4	2

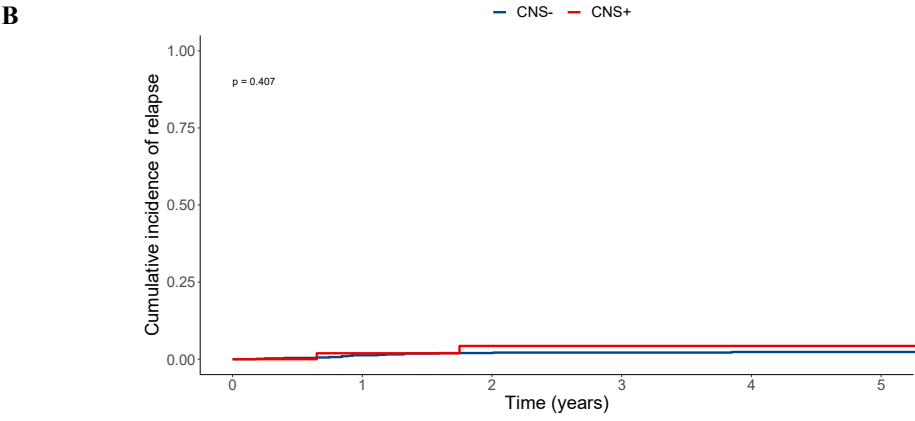


CNS-	729	379	315	268	216	152
CNS+	55	15	10	9	6	5

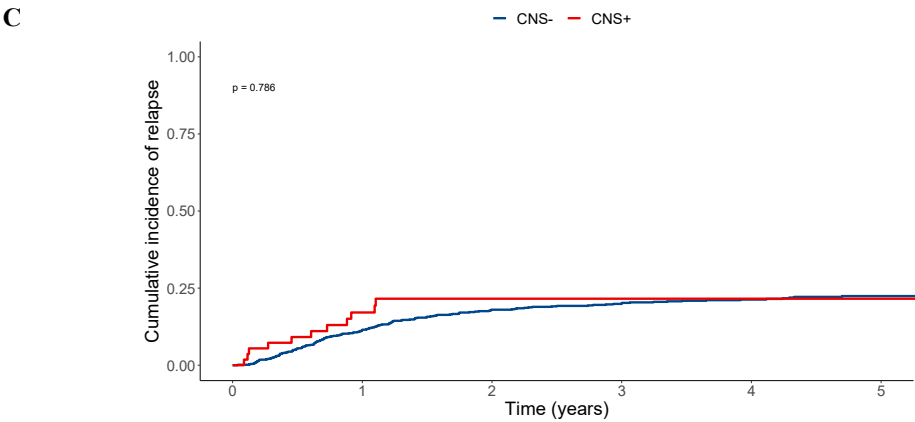
Supplementary figure 3. Cumulative incidence of CNS relapse (A), combined relapse (B), and isolated bone marrow relapse (C) according to CNS involvement at diagnosis.



CNS-	729	508	415	374	289	202
CNS+	55	28	21	20	14	9

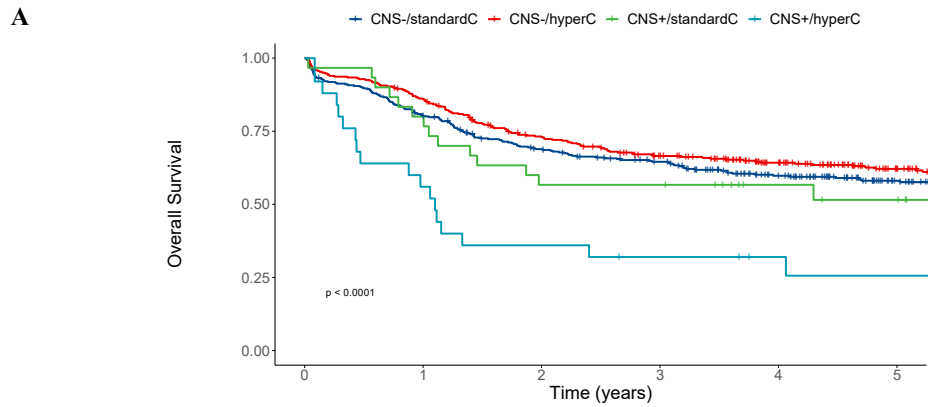


CNS-	729	508	415	374	289	202
CNS+	55	28	21	20	14	9

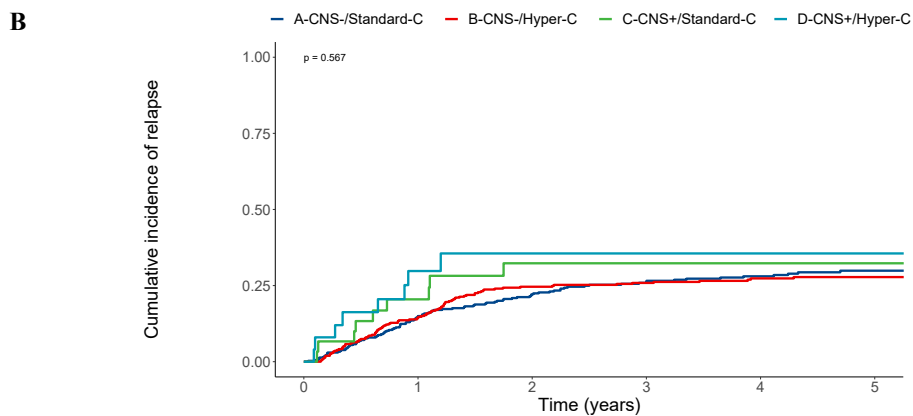


CNS-	729	508	415	374	289	202
CNS+	55	28	21	20	14	9

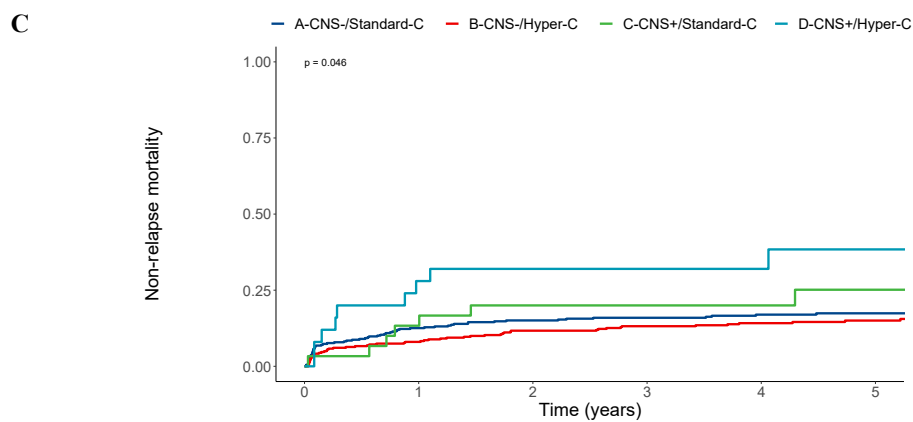
Supplementary Figure 4. Overall survival (A), cumulative incidence of relapse (B), and cumulative incidence of non-relapse mortality (C) according to CNS involvement at diagnosis and randomization arm (standard-C versus hyper-C).



CNS-/standardC	367	292	242	215	166	112
CNS-/hyperC	362	309	254	220	177	128
CNS+/standardC	30	24	17	17	11	9
CNS+/hyperC	25	14	9	7	5	4

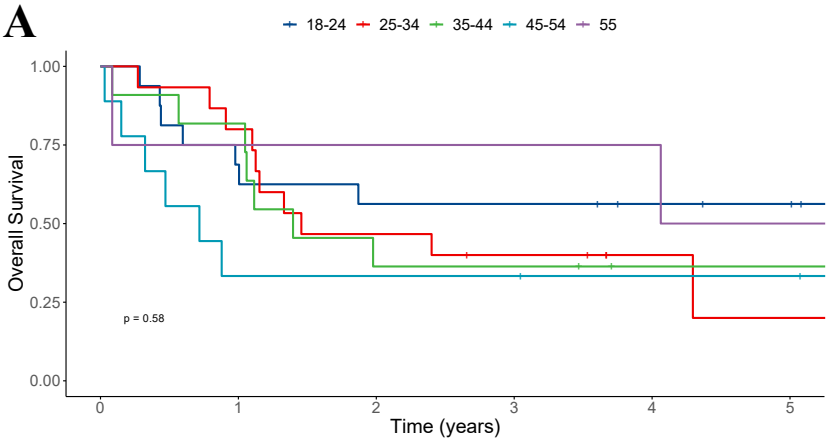


A-CNS-/Standard-C	367	246	206	181	141	93
B-CNS-/Hyper-C	362	262	209	193	148	109
C-CNS+/Standard-C	30	19	14	14	10	5
D-CNS+/Hyper-C	25	9	7	6	4	4

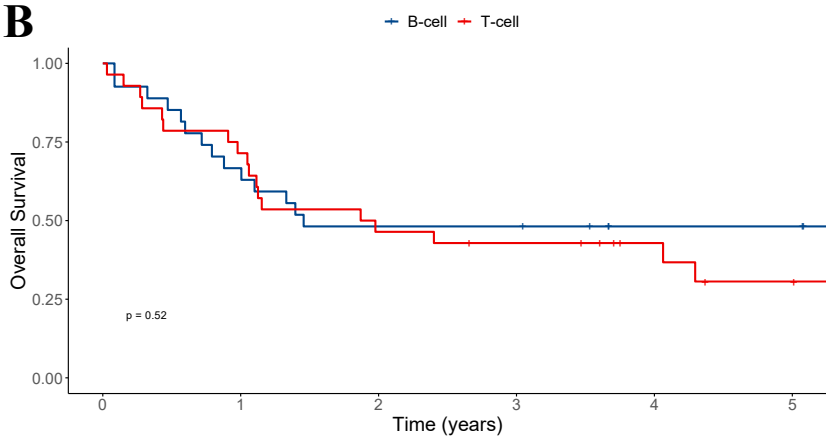


A-CNS-/Standard-C	367	259	224	201	160	108
B-CNS-/Hyper-C	362	284	234	216	174	127
C-CNS+/Standard-C	30	22	17	17	11	9
D-CNS+/Hyper-C	25	10	8	7	5	4

Supplementary Figure 5. Overall survival in CNS-positive patients according to (A) age categories and to (B) ALL subtype.



18-24	16	11	9	9	7	6
25-34	15	12	7	5	2	1
35-44	11	9	4	4	2	2
45-54	9	3	3	3	2	2
55	4	3	3	3	3	2



B-cell	27	18	13	13	9	9
T-cell	28	20	13	11	7	4